

Supplementary Figure SF2. Fundus images from the MAIA showing the PRL (both left images) and fixation areas (both right images) for the pre-training session (first and third images) and post-training session (second and fourth images) for each individual participant.

* I (purple dot) = preferred retinal locus (PRL) for the first 10s of the microperimetry test.

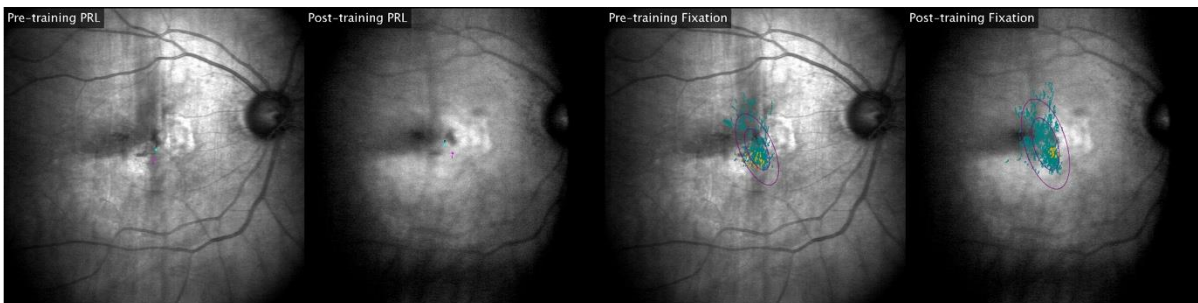
* F (cyan dot) = average PRL for the complete microperimetry test.

* Small magenta circle = area of stable fixation for 63% of the microperimetry test.

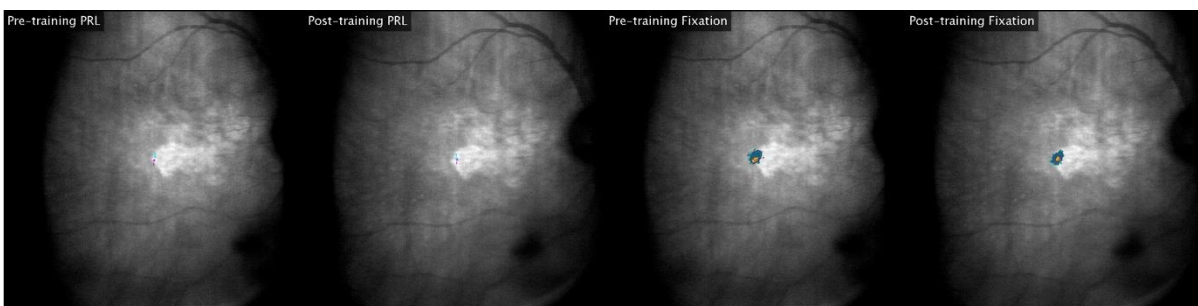
* Large magenta circle = area of stable fixation for 95% of the microperimetry test.

Trained Participants

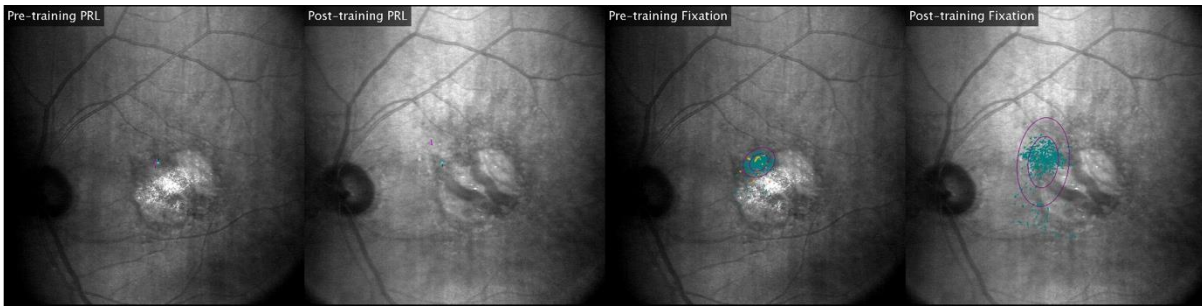
RT



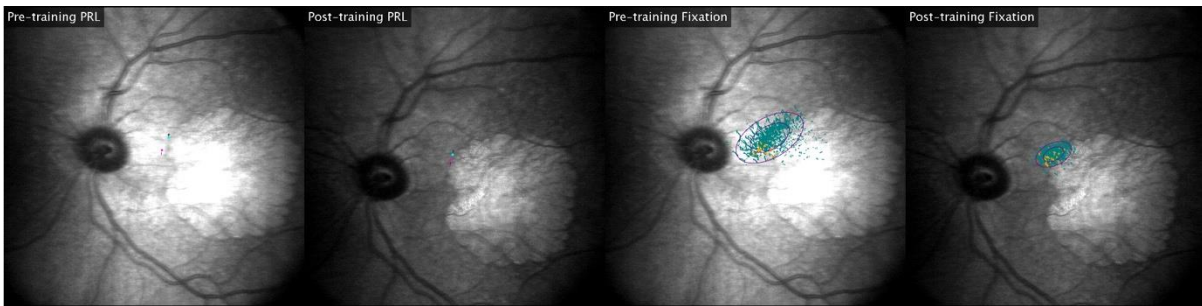
LJ



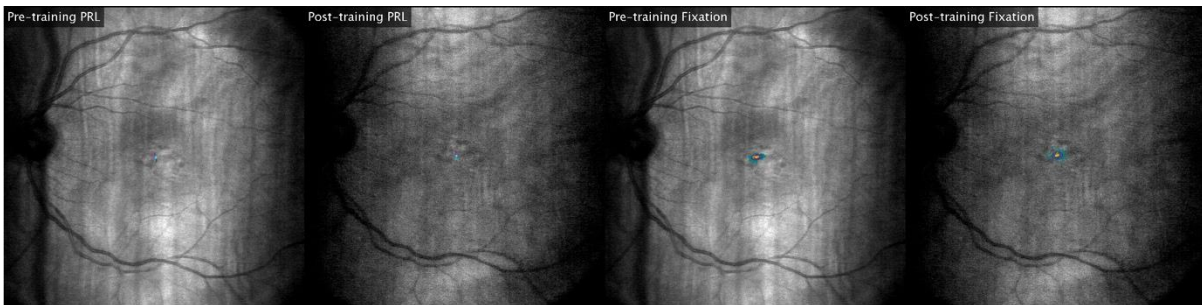
MV



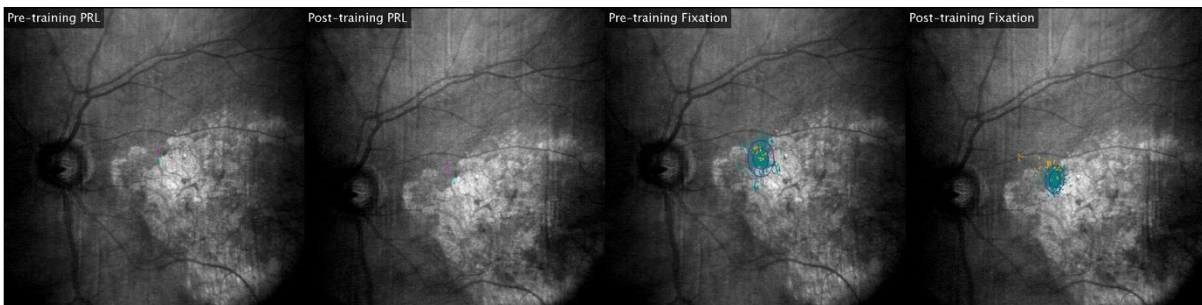
WB



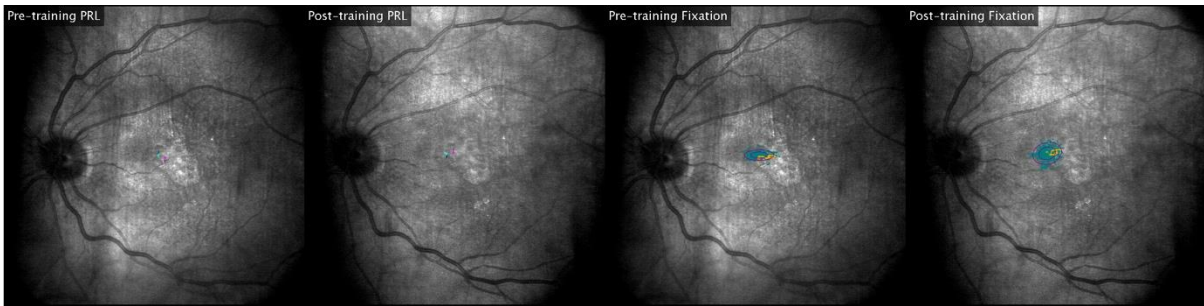
SC



AS1



JH



MS



JG



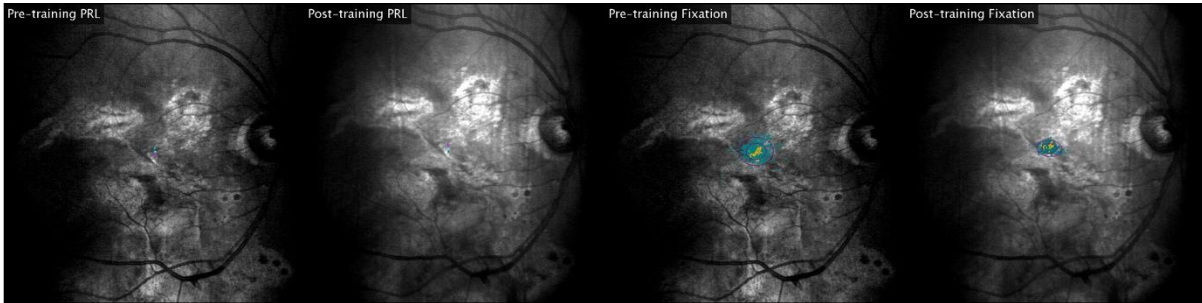
DB

* Optic disc unable to be imaged. Fixation stability not included in analysis.

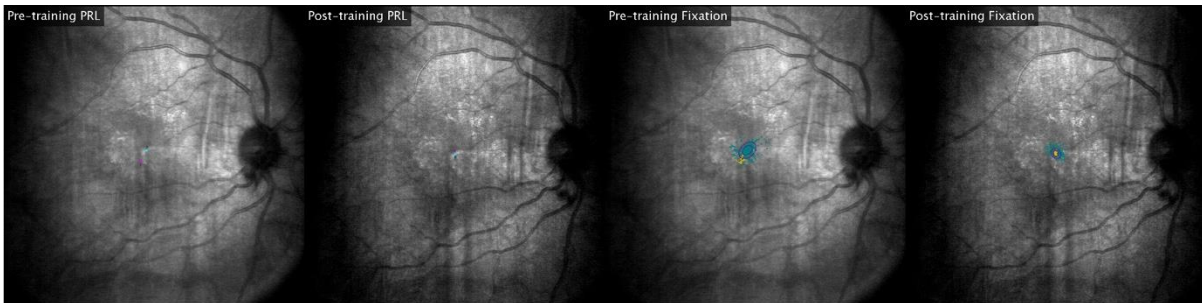


Control Participants

DS

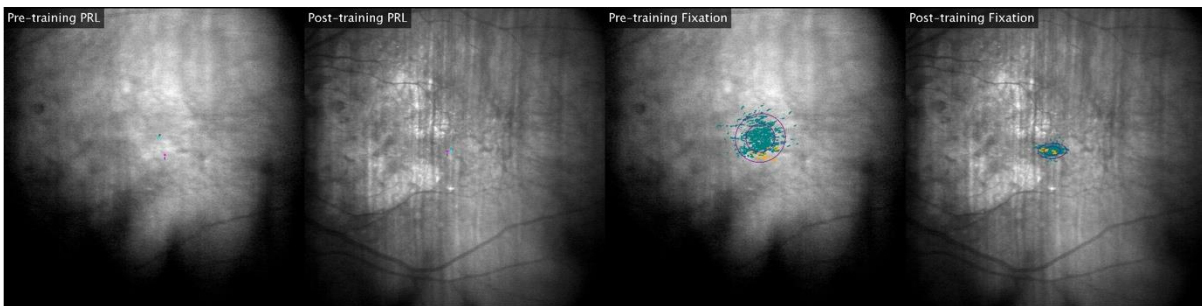


SA

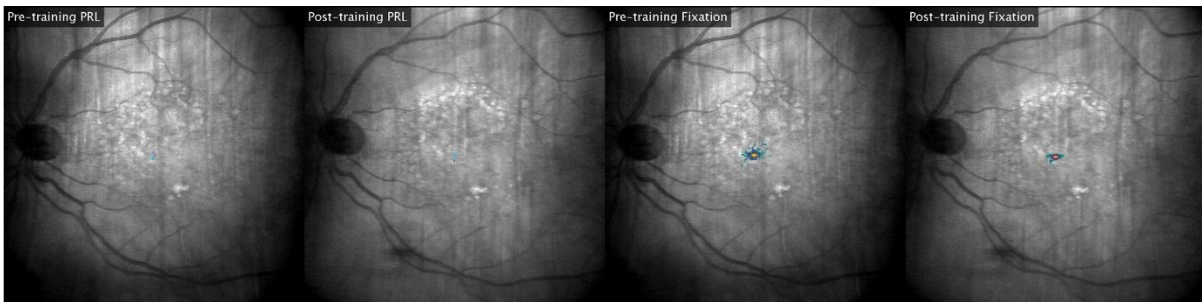


AS

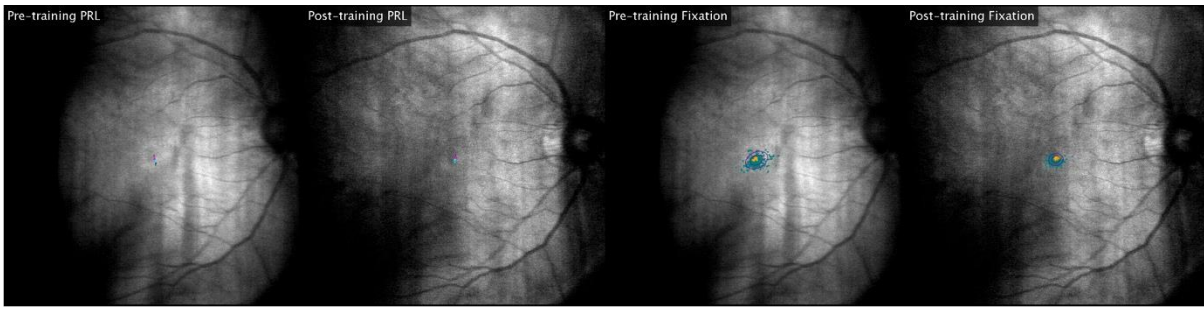
* Optic disc unable to be imaged. Fixation stability not included in analysis.



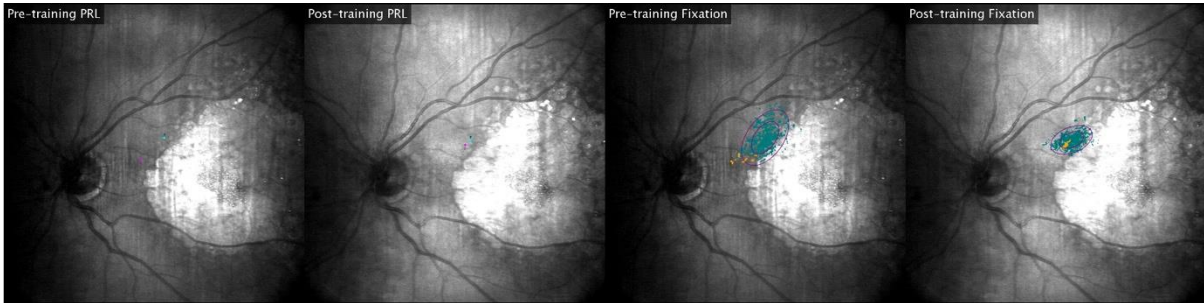
SS



SK



SG



GB



RH



NT

* Optic disc unable to be imaged. Fixation stability not included in analysis.

