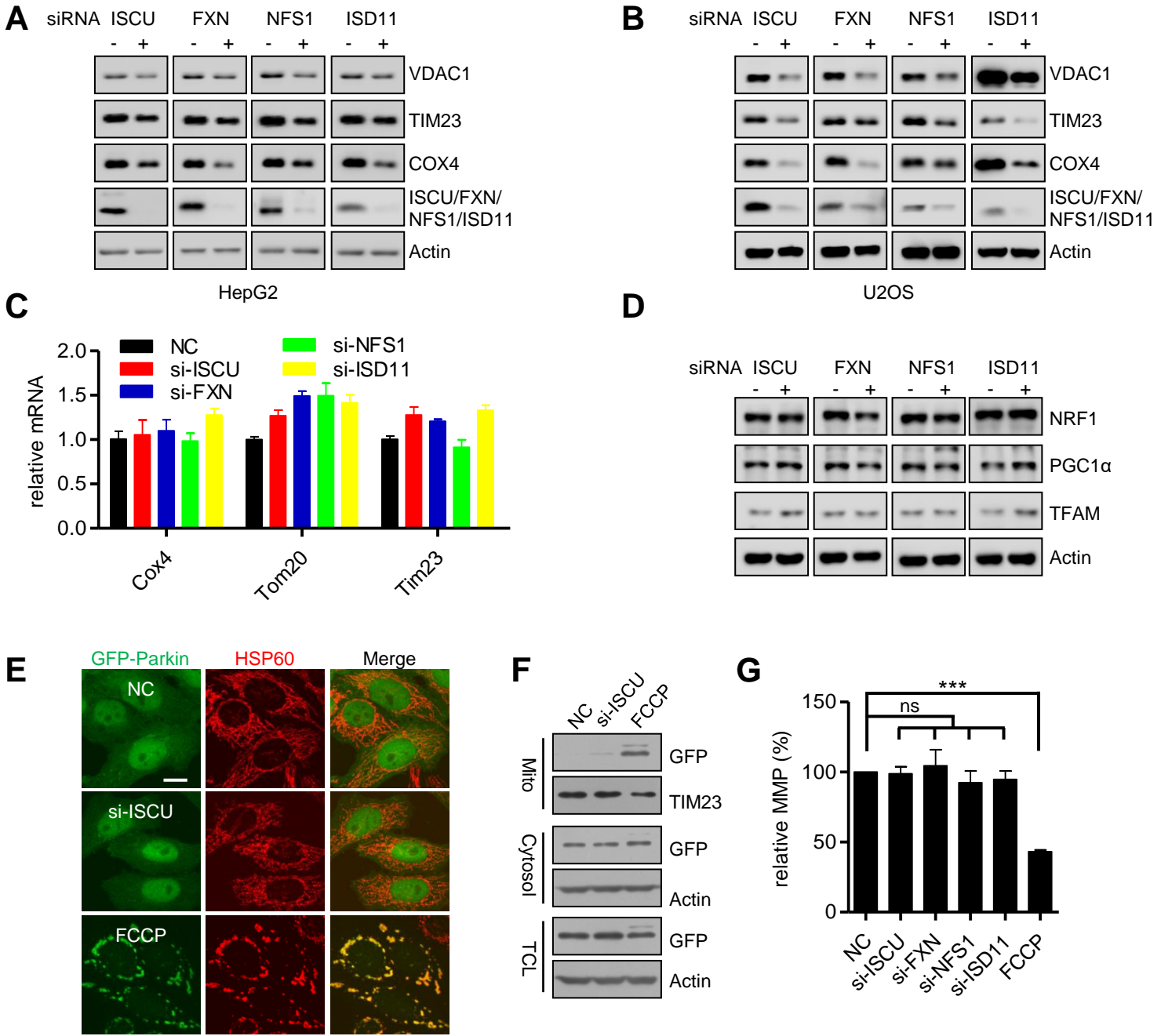
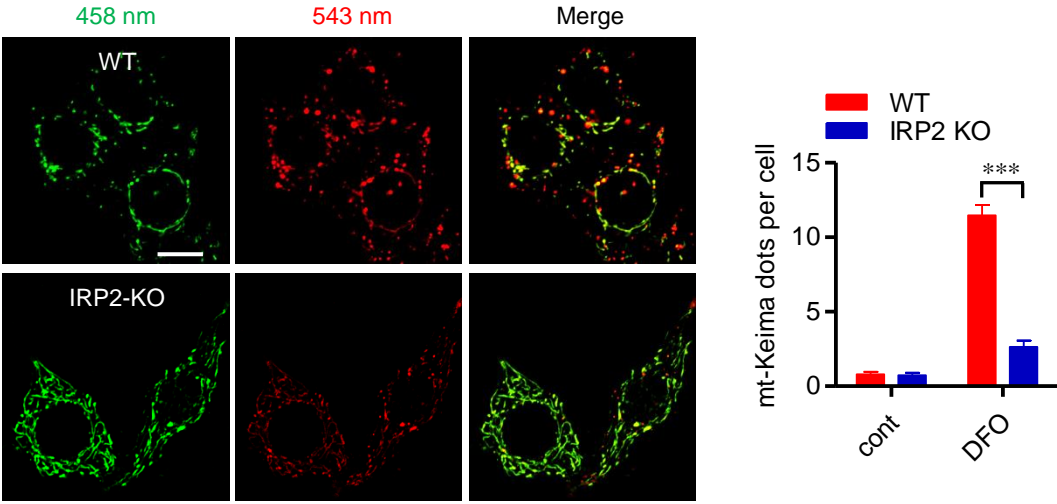


**Fig. S1. ISCU knockdown induces mitophagy, which is independent on Parkin**

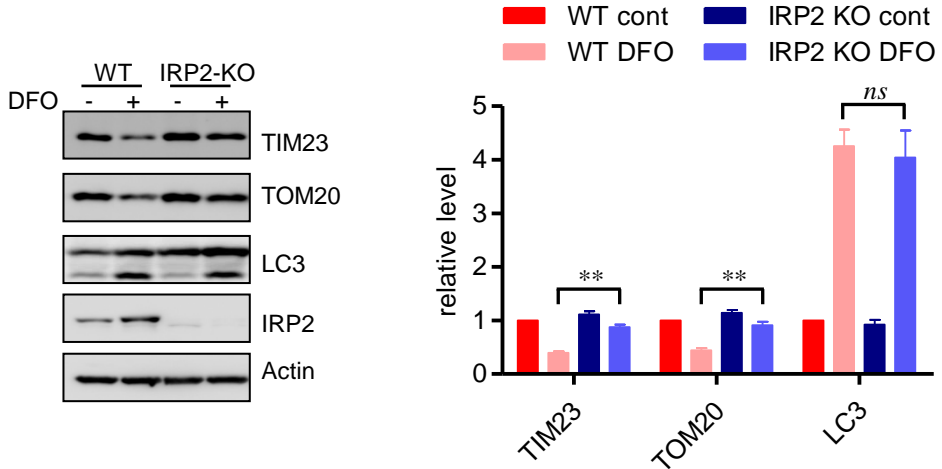


**Fig. S2.** IRP2 regulates mitophagy overlapping to IRP1

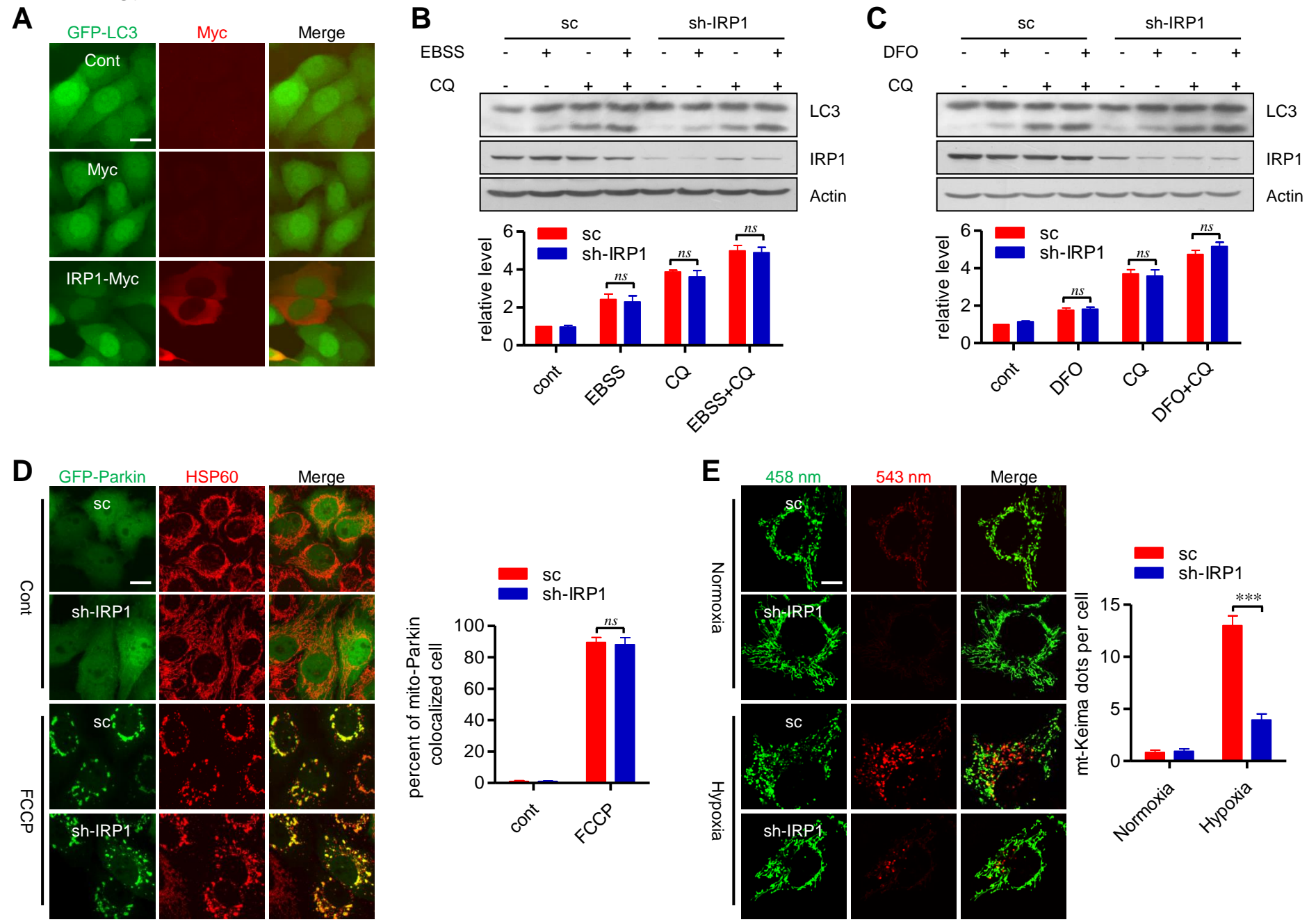
**A**



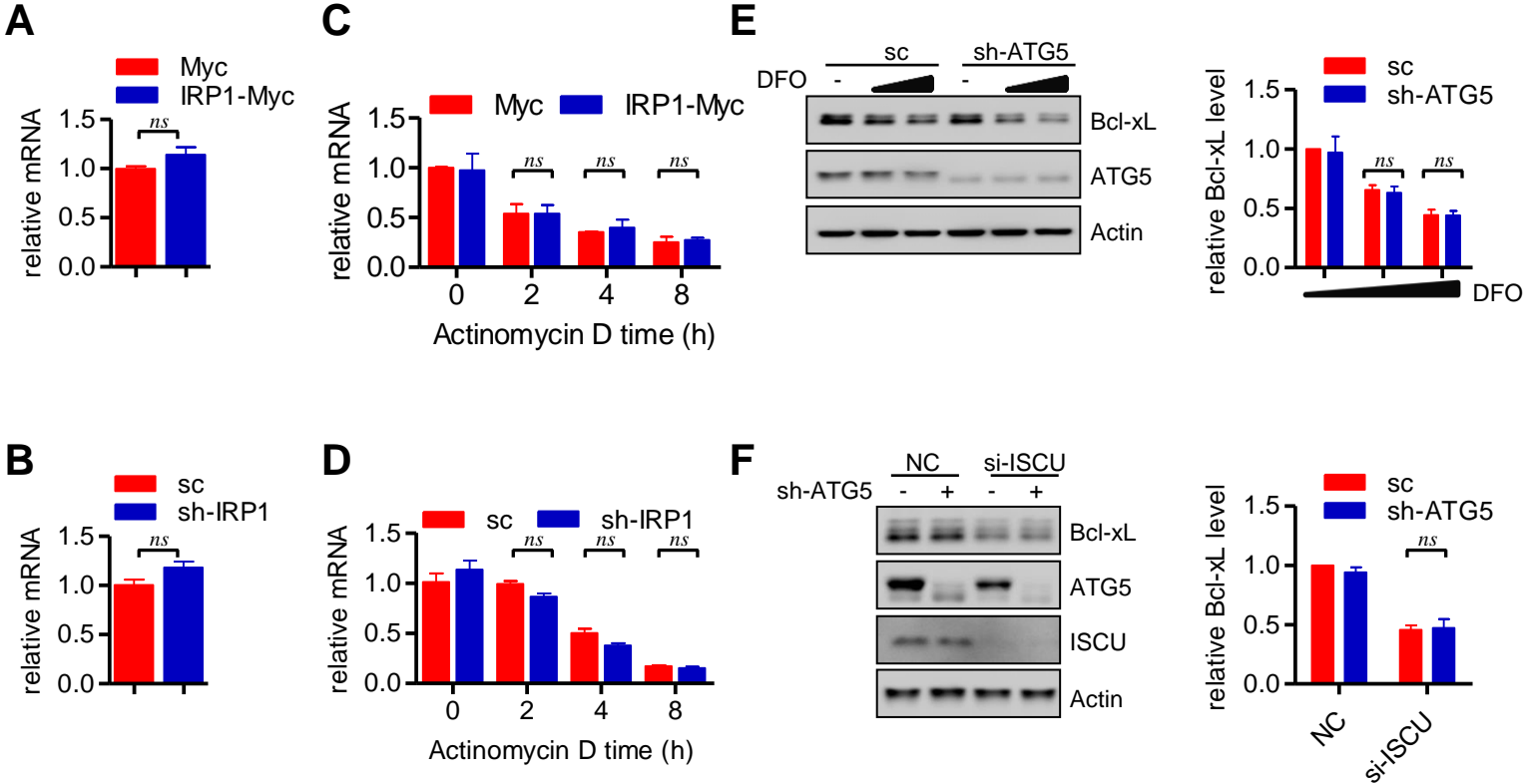
**B**



**Fig. S3.** The effect of IRP1 on general autophagy, Parkin mediated mitophagy and hypoxia induced mitophagy

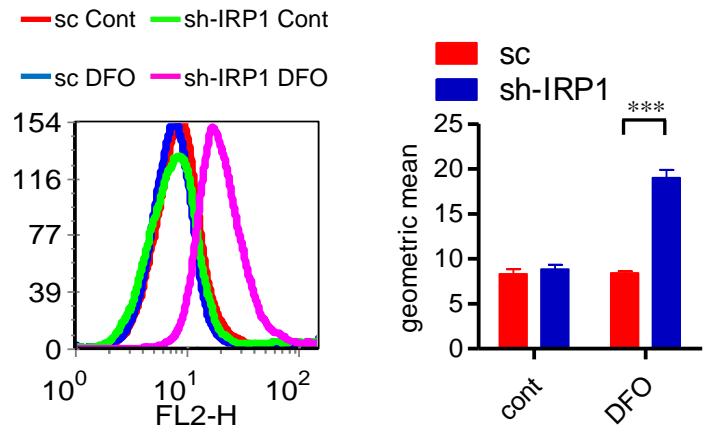


**Fig. S4. IRP1 modulates Bcl-xL translation**

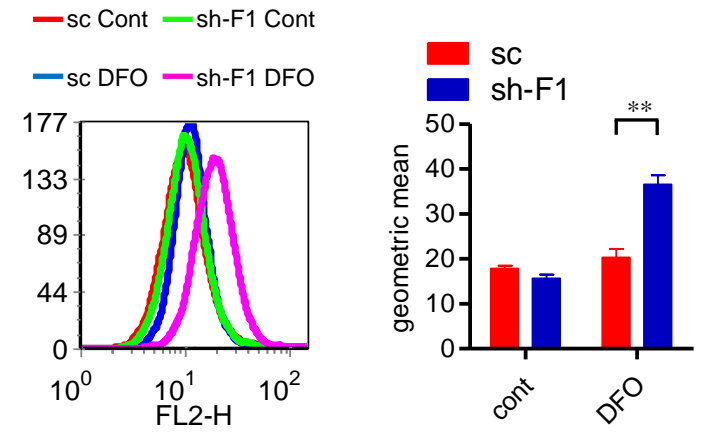


**Fig. S5.** FUNDC1 dependent mitophagy is crucial for mitochondrial quality control

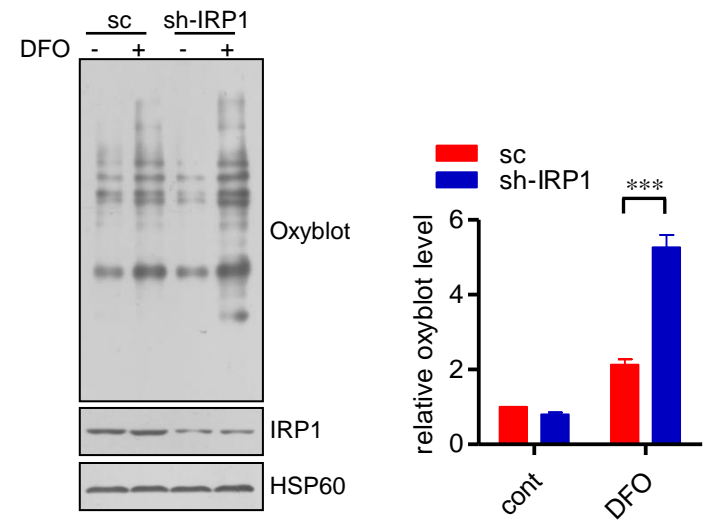
**A**



**C**



**B**



**D**

