

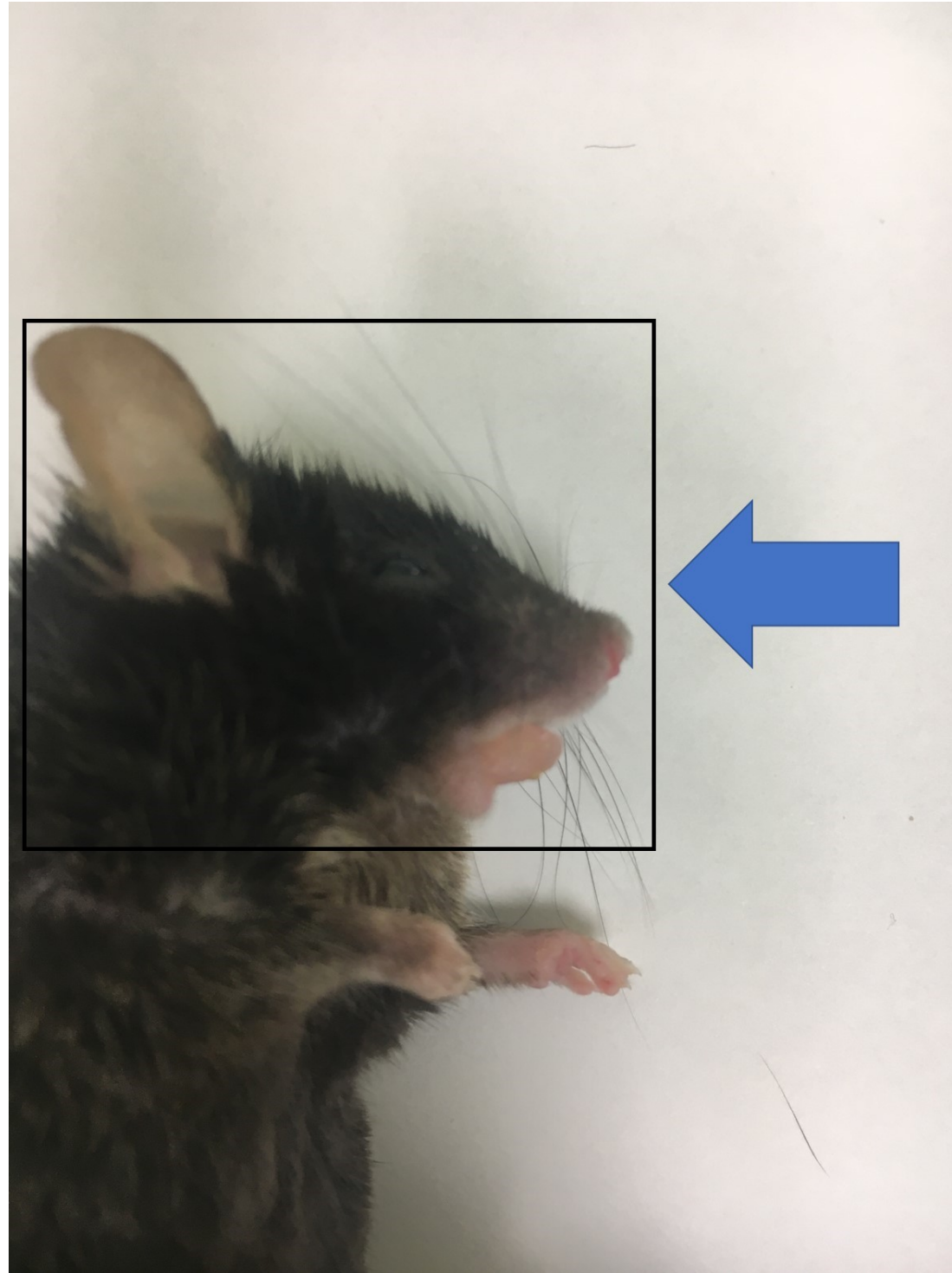
Effects of occlusal disharmony on susceptibility to atrial fibrillation in mice

Kenji Suita ^a, Yuka Yagisawa ^b, Yoshiki Ohnuki ^a, Daisuke Umeki ^b, Megumi Nariyama ^c, Aiko Ito ^b, Yoshio Hayakawa ^e, Ichiro Matsuo ^d, Yasumasa Mototani ^a, Yasutake Saeki ^a, Satoshi Okumura ^{a, *}

^a Department of Physiology; ^b Department of Orthodontics; ^c Department of Pediatric dentistry; ^d Department of Periodontology; ^e Department of Anesthesiology, Tsurumi University School of Dental Medicine, Yokohama 230-8501, Japan.

Supplementary Figures

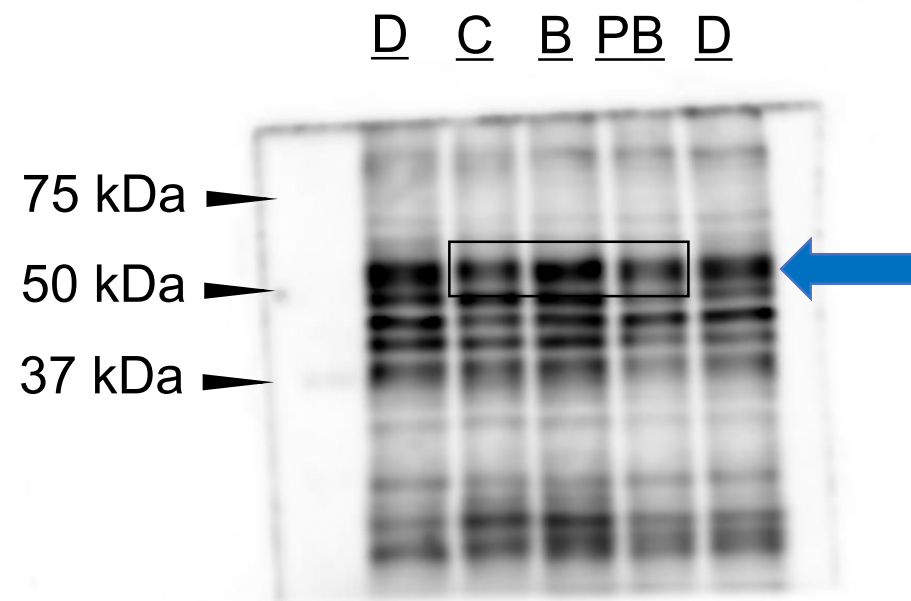
Supplementary Figure 1



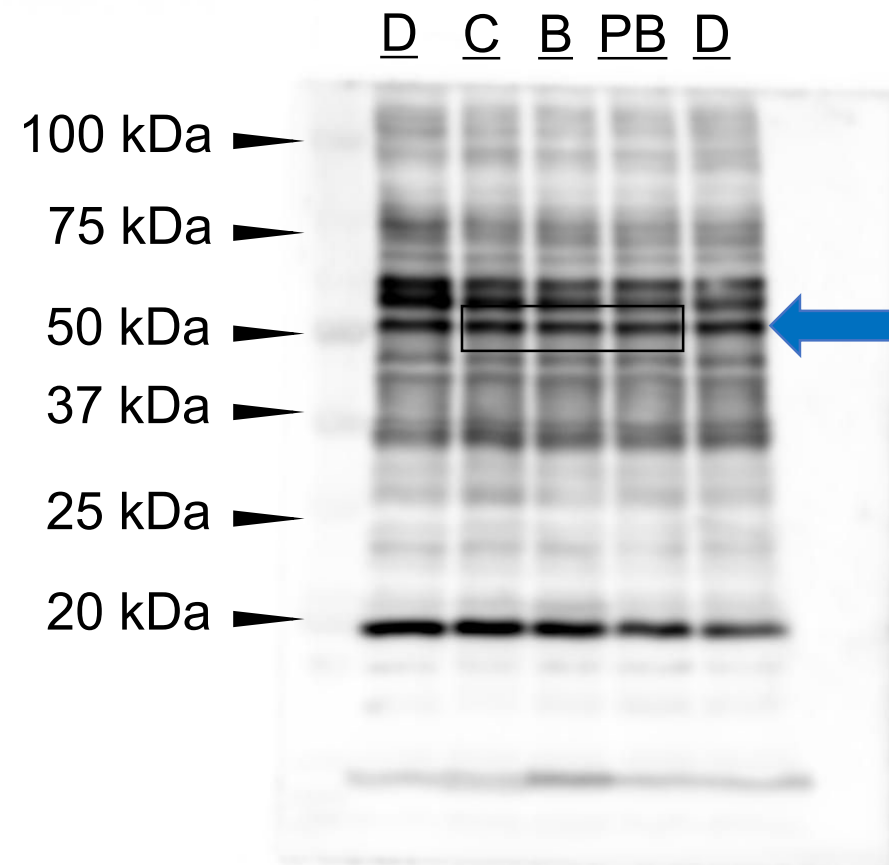
Supplementary Figure 1. The original photo of Fig. 1A. The black-line box indicated by the arrow corresponds to the cropped part that is shown in the main article.

Supplementary Figure 2

Phospho (Thr-286) CaMKII

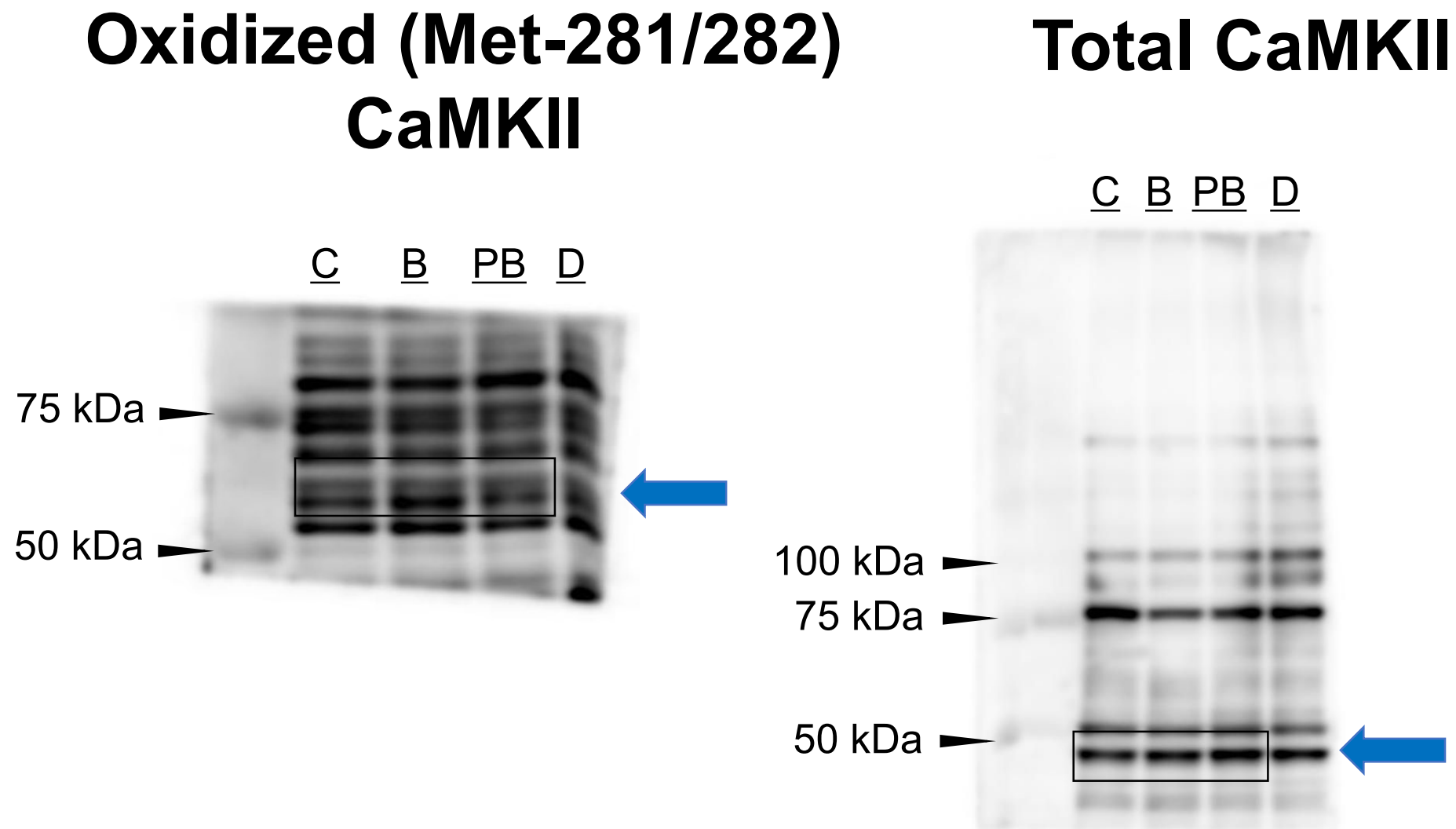


Total CaMKII



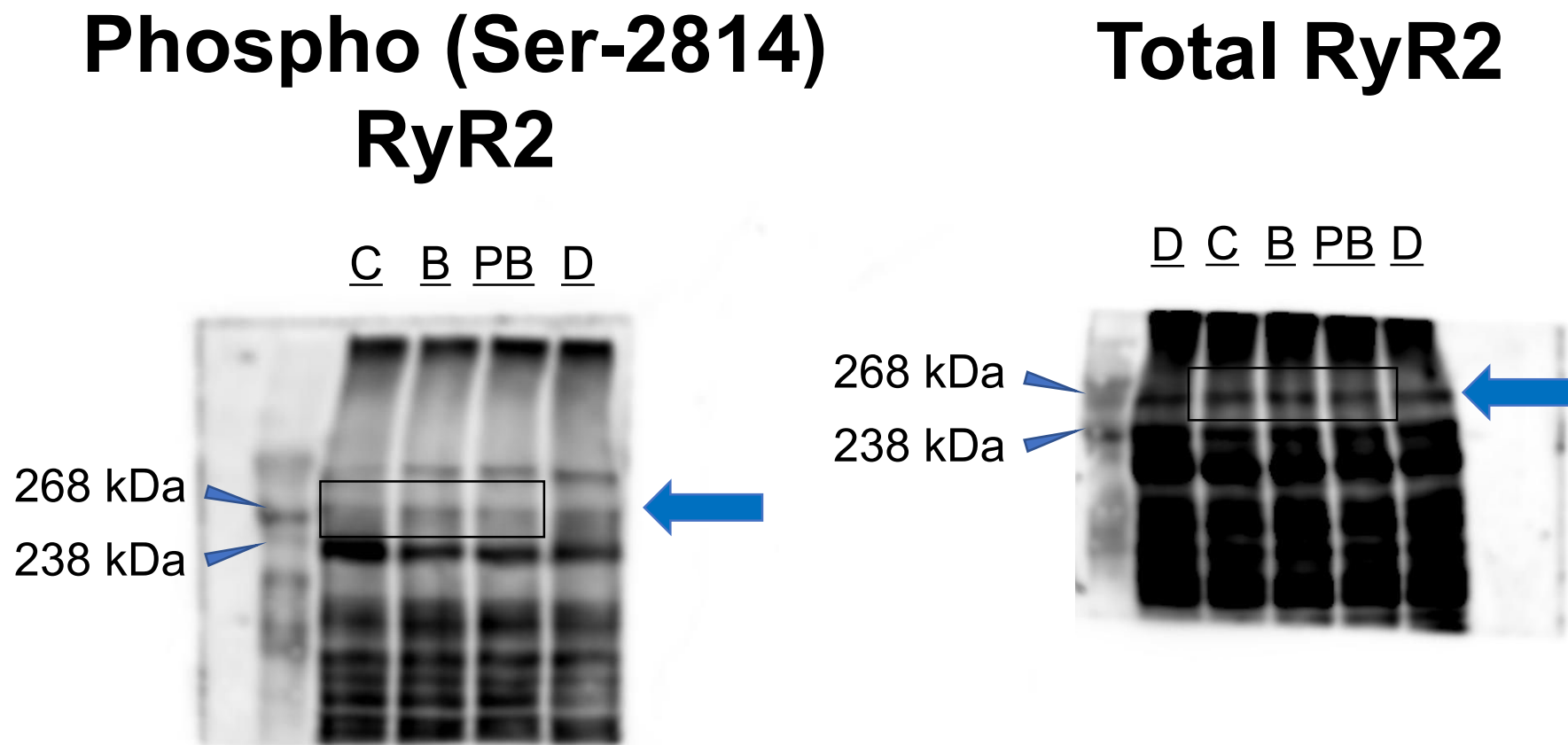
Supplementary Figure 2. Representative full-length immunoblots of Fig. 4C. The amounts of phosphorylated CaMKII at Thr-286 (left panel) and total CaMKII (right panel) are shown. The black-line box indicated by the arrow in each blot corresponds to the cropped parts that are shown in the main article. C: control, B: BO, PB: Propranolol + BO, D: dummy sample.

Supplementary Figure 3



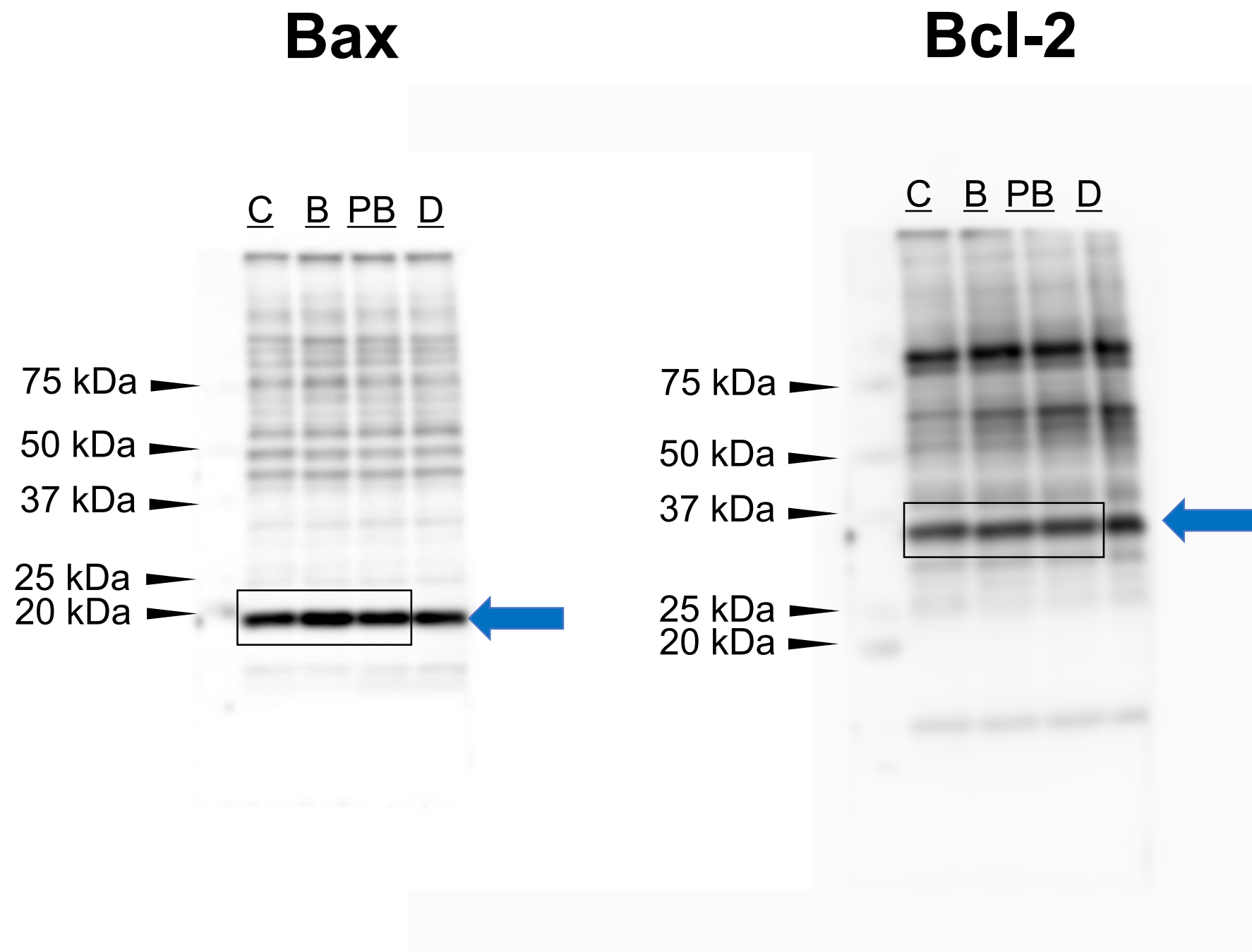
Supplementary Figure 3. Representative full-length immunoblots of Fig. 4C. The amounts of oxidized CaMKII at Met-281/282 (left panel) and total CaMKII (right panel) are shown. The black-line box indicated by the arrow in each blot corresponds to the cropped parts that are shown in the main article. C: control, B: BO, PB: Propranolol + BO, D: dummy sample.

Supplementary Figure 4



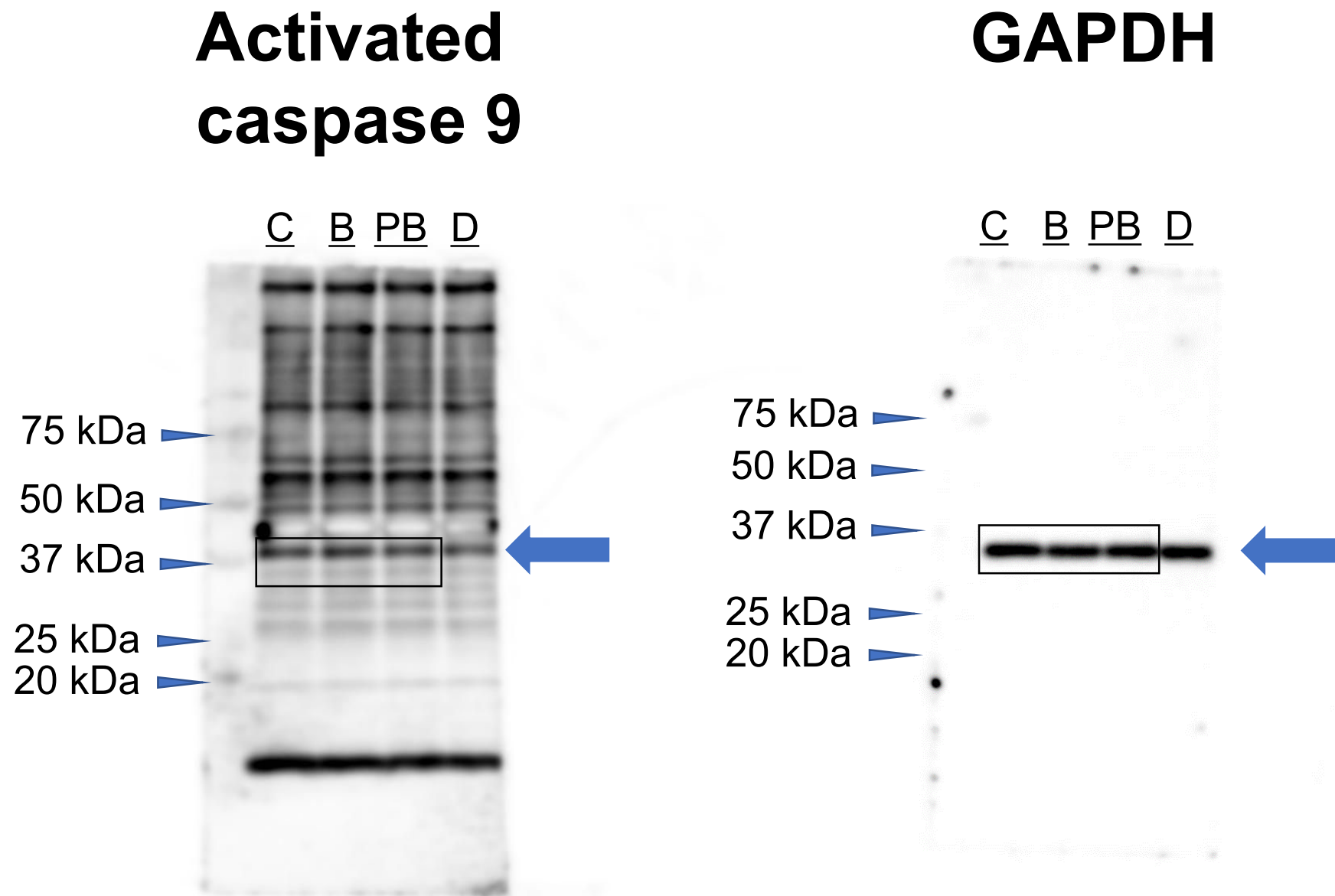
Supplementary Figure 4. Representative full-length immunoblots of Fig. 4C. The amounts of phosphorylated RyR2 at Ser-2814 (left panel) and total RyR2 (right panel) are shown. The black-line box indicated by the arrow in each blot corresponds to the cropped parts that are shown in the main article. C: control, B: BO, PB: Propranolol + BO, D: dummy sample.

Supplementary Figure 5



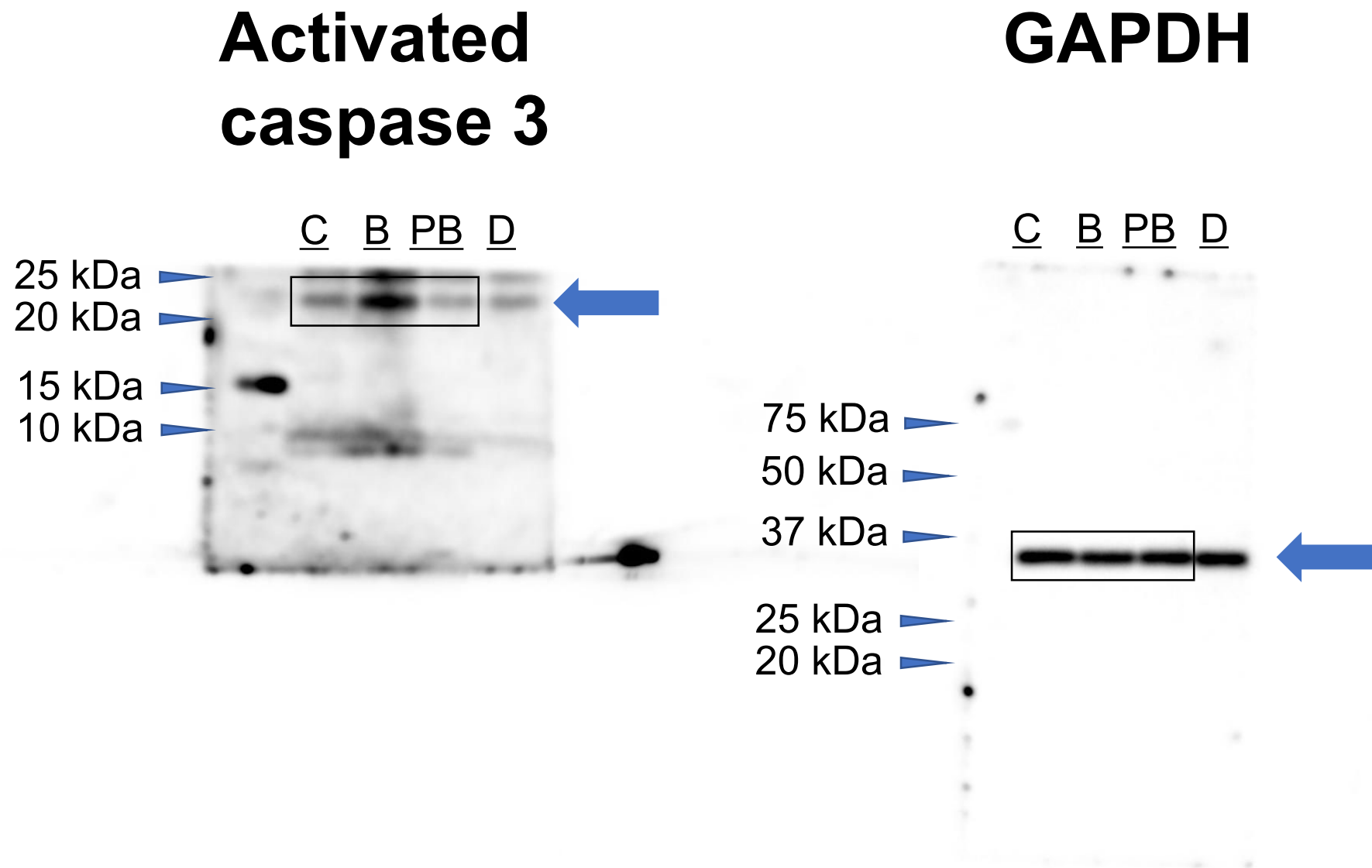
Supplementary Figure 5. Representative full-length immunoblots of Fig. 4D. The amounts of Bax (left panel) and total Bcl-2 (right panel) are shown. The black-line box indicated by the arrow in each blot corresponds to the cropped parts that are shown in the main article. C: control, B: BO, PB: Propranolol + BO, D: dummy sample.

Supplementary Figure 6



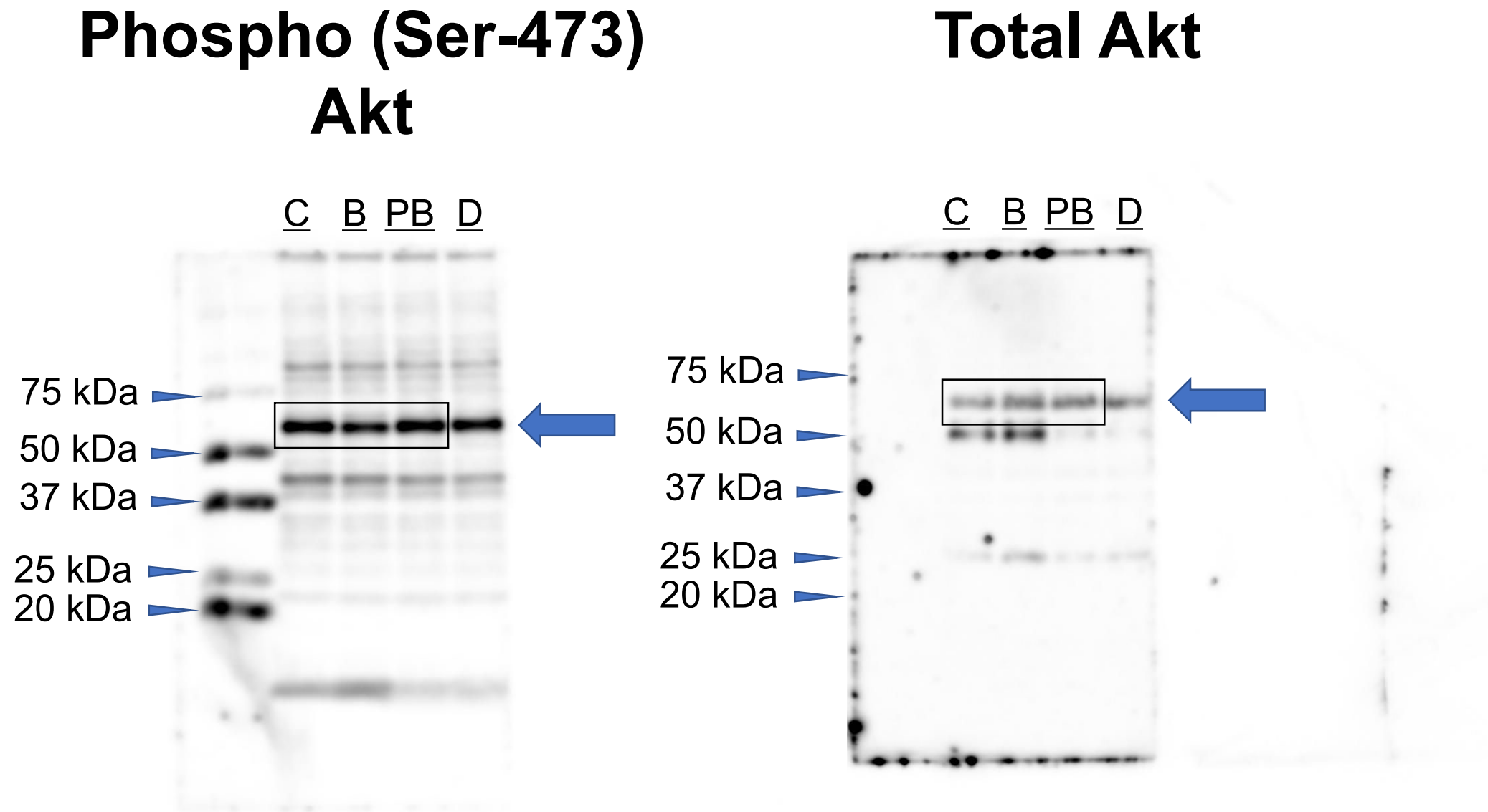
Supplementary Figure 6. Representative full-length immunoblots of Fig. 4E. The amounts of activated caspase 9 (left panel) and GAPDH (right panel) are shown. The black-line box indicated by the arrow in each blot corresponds to the cropped parts that are shown in the main article. C: control, B: BO, PB: Propranolol + BO, D: dummy sample.

Supplementary Figure 7



Supplementary Figure 7. Representative full-length immunoblots of Fig. 4F. The amounts of activated caspase 3 (left panel) and GAPDH (right panel) are shown. The black-line box indicated by the arrow in each blot corresponds to the cropped parts that are shown in the main article. C: control, B: BO, PB: Propranolol + BO, D: dummy sample.

Supplementary Figure 8



Supplementary Figure 8. Representative full-length immunoblots of Fig. 4G. The amounts of phosphorylated Akt at Ser-473 (left panel) and total Akt (right panel) are shown. The black-line box indicated by the arrow in each blot corresponds to the cropped parts that are shown in the main article. C: control, B: BO, PB: Propranolol + BO, D: dummy sample.