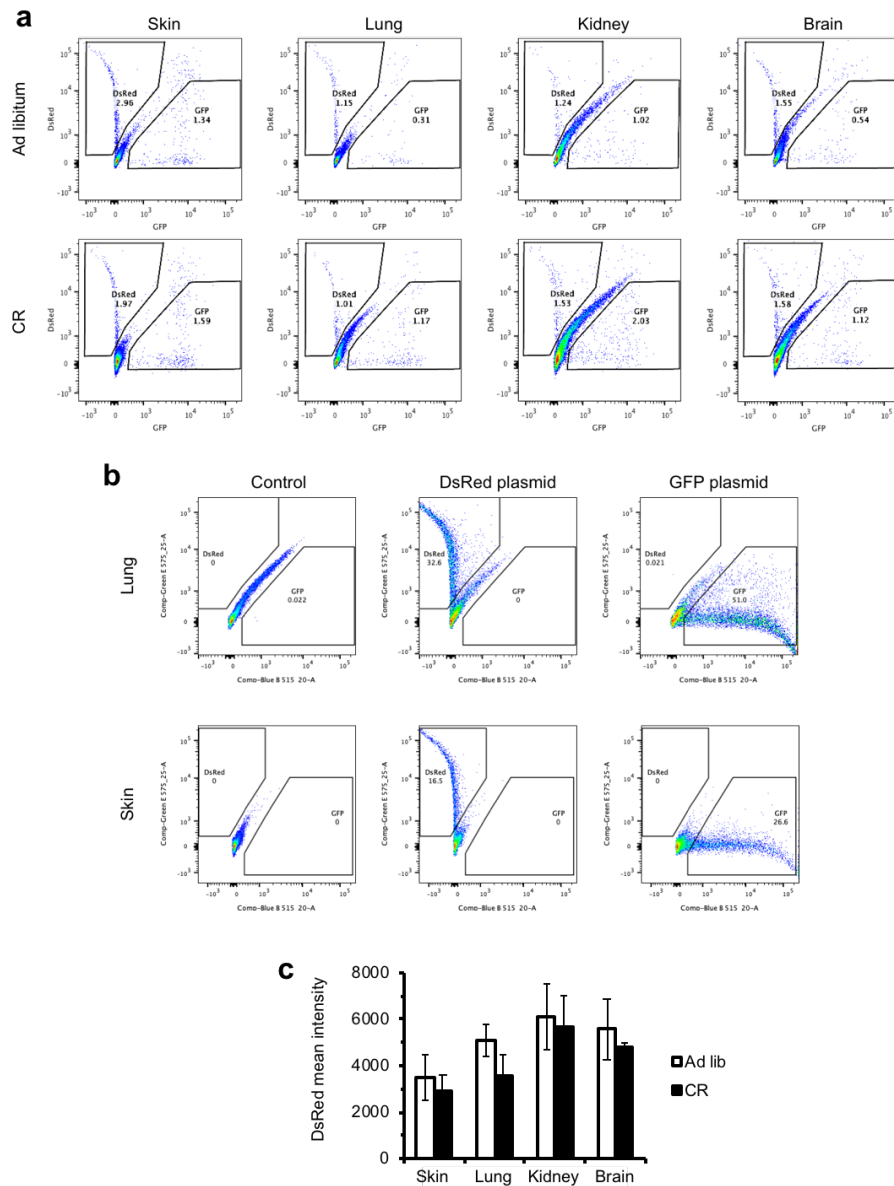
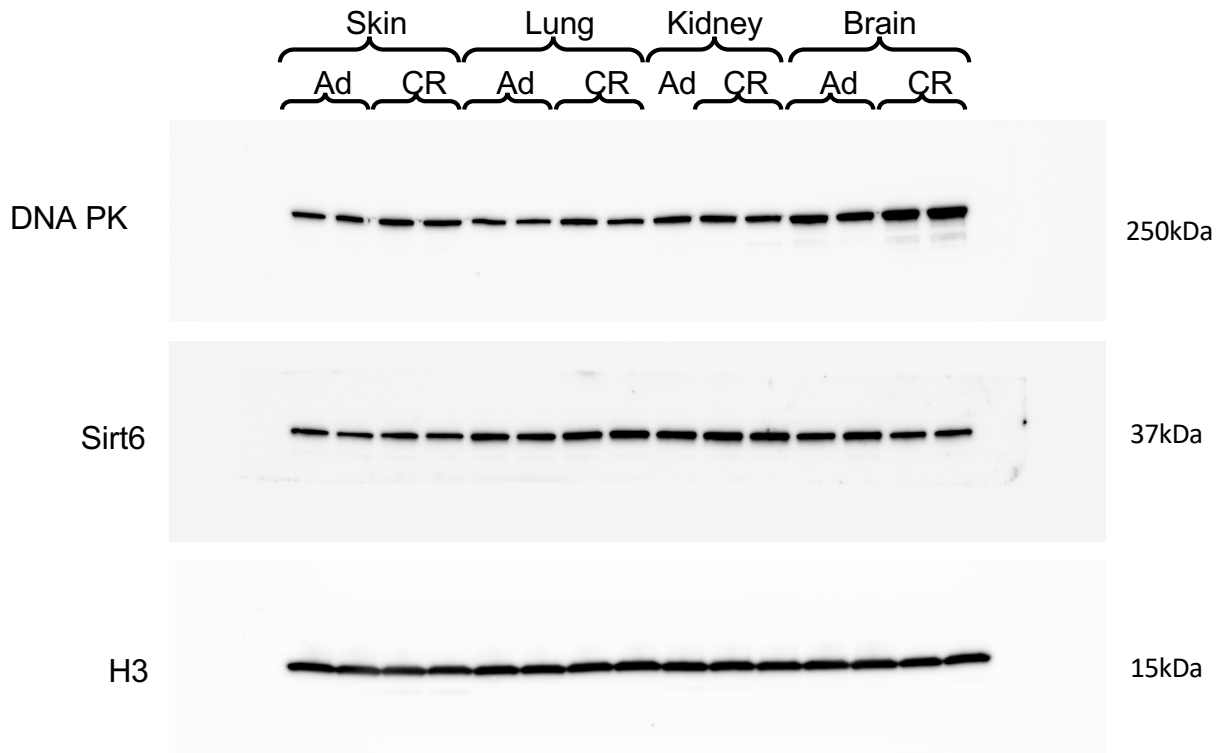


## Supplementary Information



**Supplementary Figure 1. Representative FACS traces for NHEJ assay.** (a) Primary cells ( $1 \times 10^6$ ) primary cells were transfected with  $5 \mu\text{g}$  I-SceI and  $0.1 \mu\text{g}$  DsRed plasmids in the first passage. Three days after transfection, cells were harvested and analyzed by FACS. NHEJ efficiency was calculated as a ratio of GFP+/DsRed+ cells. (b) The transfection method we used minimizes double transfection, hence the majority of double positive cells are auto-fluorescent

rather than truly double positive as evidenced by untransfected controls. (c) DsRed fluorescence intensity is not altered by CR. Mean fluorescence intensity provided by transfection control DsRed plasmid was calculated for all samples analyzed for NHEJ.



**Supplementary Figure 2.** Uncropped Western blots.