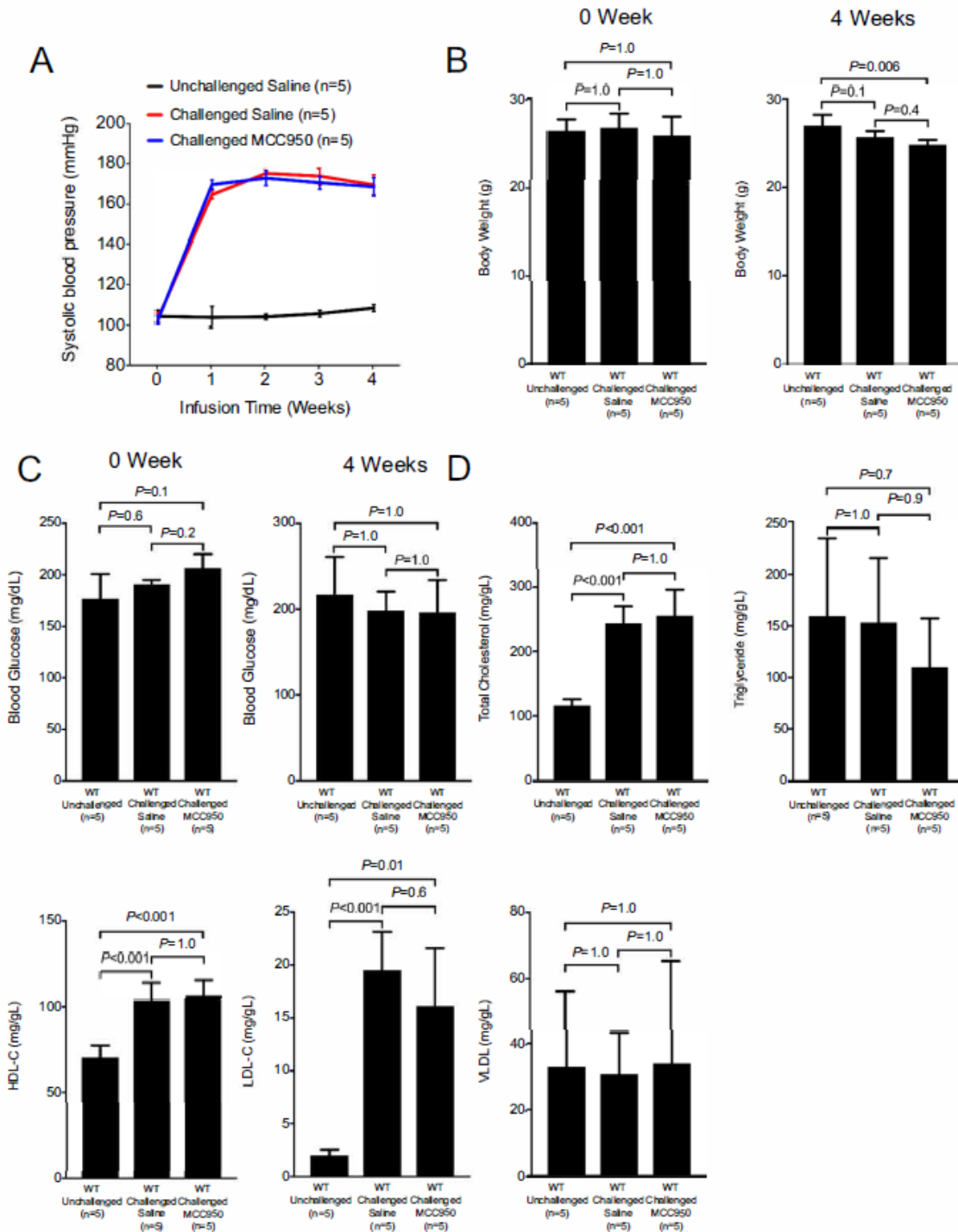


Supplemental Material

Figure S1. Effect of MCC950 on blood pressure, body weight, blood glucose level, and lipid profile in unchallenged and challenged mice treated with saline or MCC950.



(A) Systolic blood pressure in mice before and after 4 weeks of angiotensin II (AngII) infusion (n=5). (B-C) Body weight and blood glucose level before and after 4 weeks of AngII infusion (n=5). (D) Blood serum total cholesterol, triglyceride, very low-density lipoprotein (VLDL), low-density lipoprotein cholesterol (LDL-C), and high-density lipoprotein cholesterol (HDL-C) levels after 4 weeks of AngII infusion (n=5). Data are presented as the mean \pm standard error of the mean. One-way ANOVA with the post-hoc Tukey test was used for pairwise comparisons.