

# **Supplemental Material**

**Table S1. Missing Data from Variables Included in the Propensity Matching.**

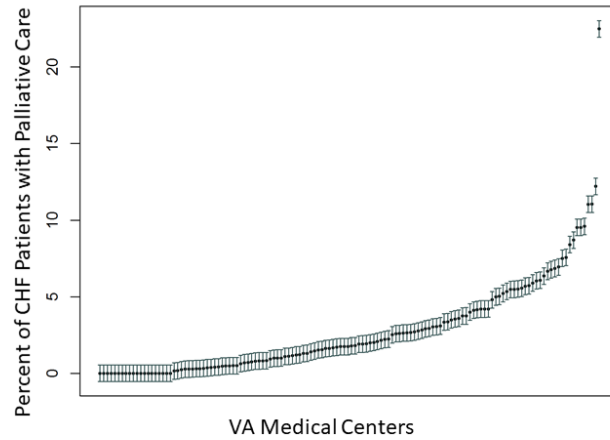
Missingness Table	Palliative Cohort		Matched Cohort	
	N=1431		N=1431	
	Nonmissing N	Missing % (N)	Nonmissing N	Missing % (N)
Demographics				
<b>Age</b>	1431	0% (0)	1431	0% (0)
<b>Sex</b>	1431	0% (0)	1431	0% (0)
<b>Race</b>	1431	0.7% (10)	1419	0.8% (12)
<b>Elixhauser Comorbidity</b>	1431	0% (0)	1431	0% (0)
Laboratory Data				
<b>Urea Nitrogen (BUN)</b>	1286	10.1% (145)	1330	7.1% (101)
<b>Creatinine</b>	1306	8.7% (125)	1303	8.9% (128)
<b>Sodium</b>	1377	3.8% (54)	1382	3.4% (49)
<b>Brain Naturetic Peptide (BNP)</b>	892	37.7(539)	931	34.9(500)
<b>Potassium</b>	1343	6.2% (88)	1373	4.1% (58)
<b>Hematocrit</b>	1341	6.3% (90)	1375	3.9% (56)
Clinical Data				
<b>Ejection Fraction</b>	1428	0.2% (3)	1425	0.4% (6)
<b>Blood Pressure (Mean Arterial)</b>	1400	2.2% (31)	1419	0.8% (12)
<b>Pulse</b>	1400	2.2% (31)	1420	0.8% (11)
<b>Body Mass Index</b>	1176	17.8% (255)	1231	14.0% (200)
Utilization Data				
<b>Mean LOS in prior 12 months of hospitalizations</b>	1431	0% (0)	1431	0% (0)
<b>Days Alive after Index Admission</b>	1431	0% (0)	1431	0% (0)
Baseline Cost				
<b>Total cost in prior 12 months</b>	1431	0% (0)	1431	0% (0)

**Table S2. Burdensome Transition Outcome in the HF Population.**

	Palliative Cohort N=1431		Matched Cohort N=1431		p-value
	N	%	N	%	
Burdensome Transition*	516	36.1	655	45.8	<.0001

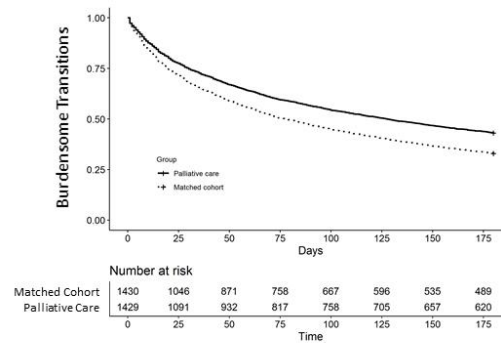
\*The Burdensome Transition composite outcome includes 2+ readmissions, ICU admission, feeding tube or mechanical ventilation in the 6 months after index hospitalization; Proportional hazard modeling identified a significant reduction in the hazard of burdensome transition among those with palliative care consultation (HR = 0.78, 95%CI 0.69,0.88). After adjustment for facility fixed effects, the hazard of burdensome transition was significantly reduced in those with palliative care consultation (adjusted HR =0.75, 95%CI 0.65, 0.86)

**Figure S1. Variability among VA Medical Centers in Palliative Consultation among HF Patients.**



Each VA Medical Center (n=129) is represented as a point on the horizontal axis, there is a variability in the availability and utilization of palliative care among CHF patients.

**Figure S2. Kaplan Meier Curve for Burdensome Transitions\*.**



The Burdensome Transition composite outcome includes 2+ readmissions, ICU admission, feeding tube or mechanical ventilation in the 6 months after index hospitalization; Proportional hazard modeling identified a significant reduction in the hazard of burdensome transition among those with palliative care consultation (HR = 0.78, 95%CI 0.69,0.88). After adjustment for facility fixed effects, the hazard of burdensome transition was significantly reduced in those with palliative care consultation (adjusted HR =0.75, 95%CI 0.65, 0.86)