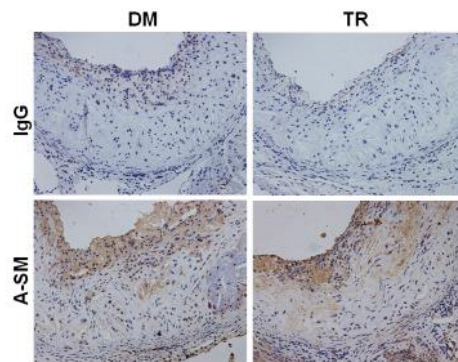


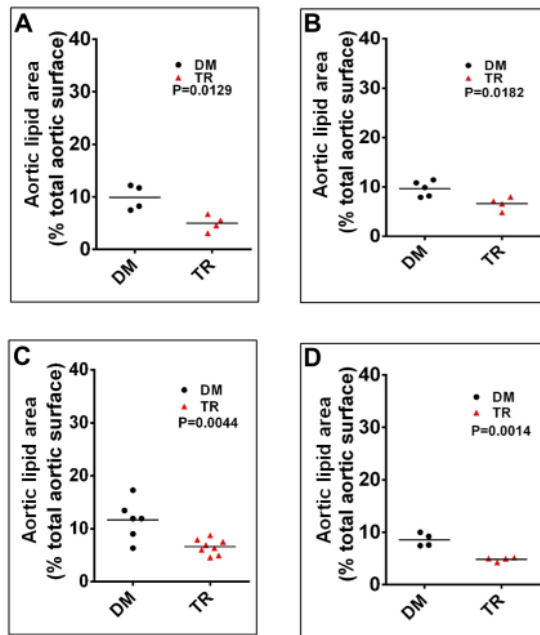
# **Supplemental Material**

**Figure S1. The specificity of the immunohistochemical staining.**



The aortic sinuses were stained with anti- $\alpha$ -SMA or control IgG to examine the specificity of immunohistochemical staining. Ig, immunoglobulin;  $\alpha$ -SMA,  $\alpha$ -smooth muscle actin; DM, vehicle containing DMSO; TR, tranilast.

**Figure S2. The role for mouse sex in TR inhibition of the initiation and progression atherosclerosis.**



The regimen for treatment of male (A) and female (B) ApoE<sup>-/-</sup> mice with TR was shown in Figure 6. The regimen for treatment of male (C) and female (D) ApoE<sup>-/-</sup> mice with TR was depicted in Figure 7. The atherosclerotic lesions in the whole aortas were visualized by Oil Red O staining. The lesional size of the aortas was measured and analyzed as indicated. DM, vehicle containing DMSO; TR, tranilast.