

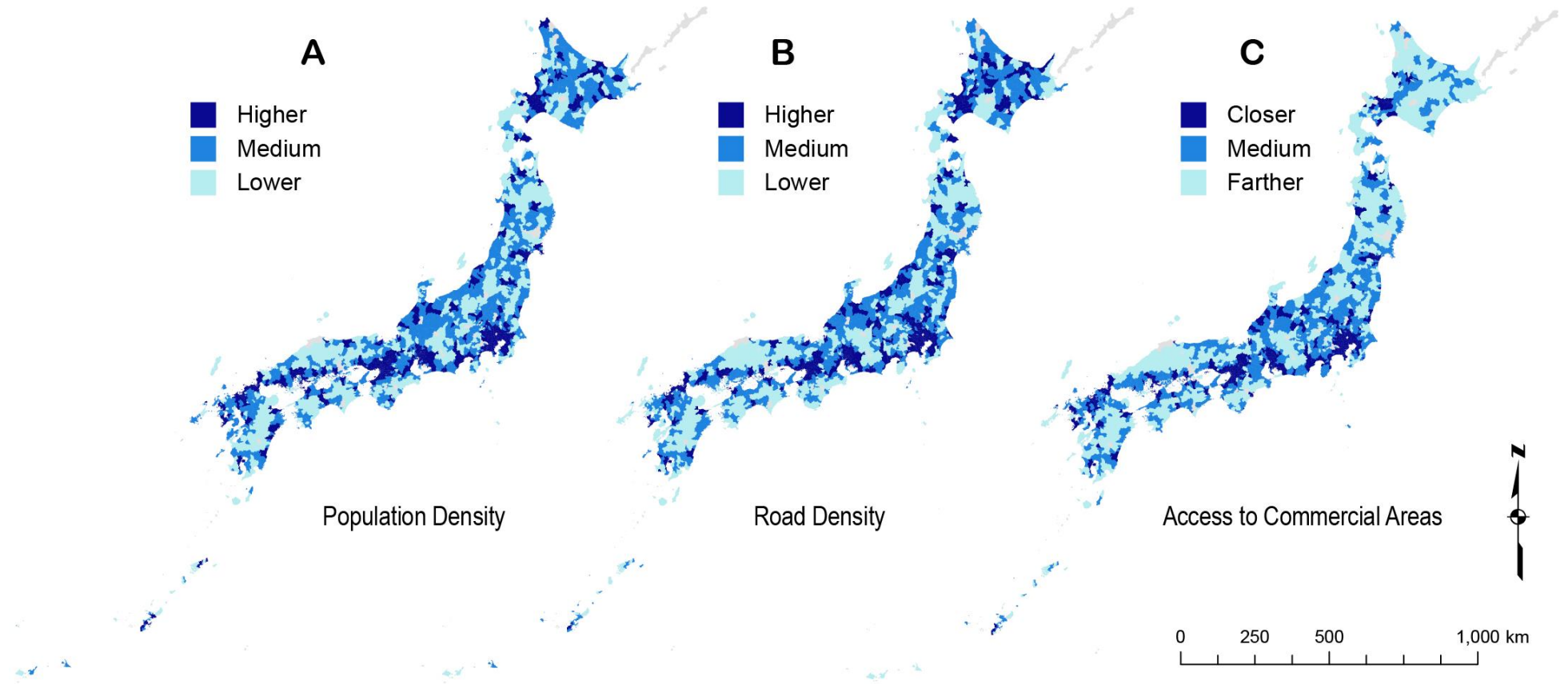
SUPPLEMENTAL MATERIAL

Table S1. Relative rates of CVD mortality for the walkability attributes stratified by SES.

Environmental attributes	Relative rate (95% CI)		
	Higher SES	Medium SES	Lower SES
Population density			
Higher	1	1	1
Medium	1.01 (0.98, 1.05)	1.03 (0.99, 1.06)	0.99 (0.94, 1.04)
Lower	1.11 (1.06, 1.16)*	1.05 (1.01, 1.08)*	0.99 (0.95, 1.04)
Road density			
Higher	1	1	1
Medium	1.04 (1.00, 1.07)*	1.03 (0.99, 1.07)	0.97 (0.92, 1.02)
Lower	1.08 (1.03, 1.13)*	1.02 (0.99, 1.06)	0.99 (0.95, 1.04)
Access to commercial area			
Closer	1	1	1
Medium	1.01 (0.98, 1.04)	1.04 (1.00, 1.08)*	0.99 (0.94, 1.04)
Farther	1.09 (1.04, 1.14)*	1.03 (0.99, 1.07)	0.98 (0.93, 1.02)
Neighborhood walkability			
Higher	1	1	1
Medium	1.02 (0.99, 1.06)	1.03 (1.00, 1.07)	0.98 (0.93, 1.03)
Lower	1.08 (1.03, 1.13)*	1.04 (1.00, 1.08)*	0.98 (0.94, 1.03)

CVD= cardiovascular disease; SES= socioeconomic status; CI= confidence interval; * p < 0.05

Figure S1. Distribution of the environmental attributes across Japan.



Note. Ogasawara islands were excluded areas and omitted due to the space limit.