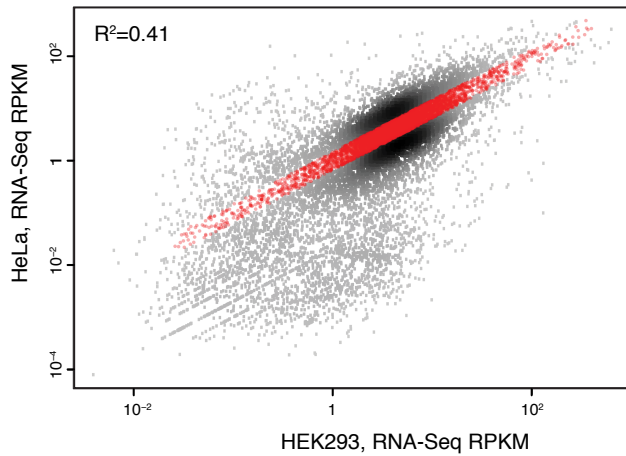


Supplemental Fig. 5



Supplemental Fig. 5. Gene expression comparison between HEK293 and HeLa cells.

A scatter plot comparing RPKM values in HEK293 cells (x-axis) and HeLa cells (y-axis) for APPRIS principal 1 isoforms representing each GRCh38 human gene. The points representing genes that fall within 1.5-fold change in the two datasets are in red. These were used in the analyses comparing CLIP-Seq to xRIPiT-Seq in Figs. 4 and 5 and Supplemental Figs. S4 and S6.