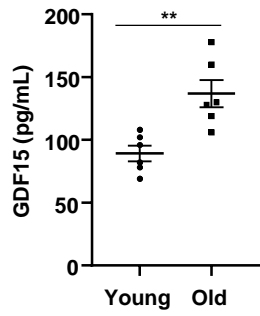
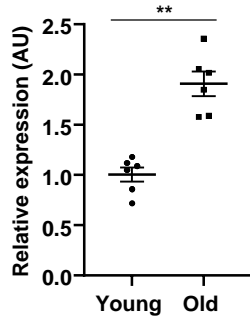


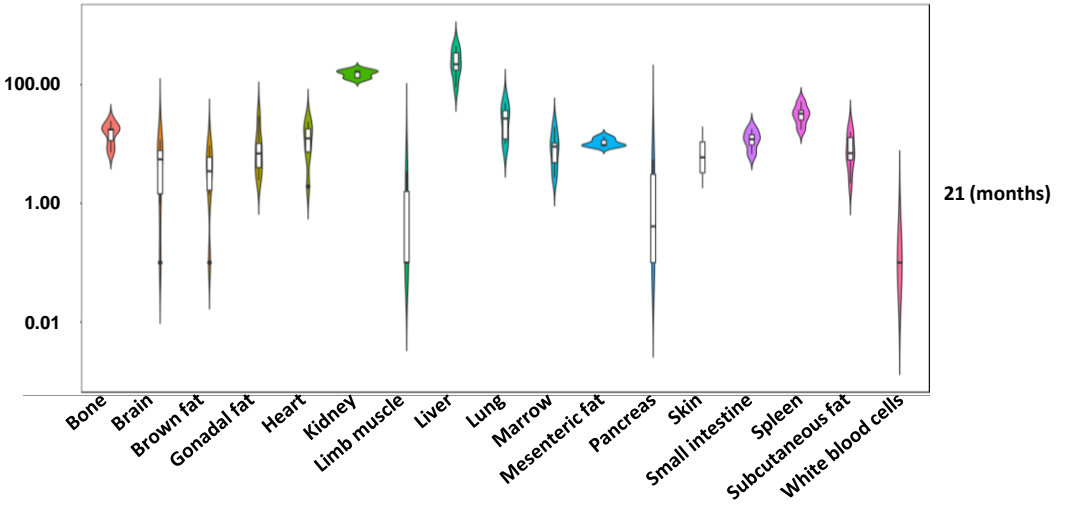
(a)



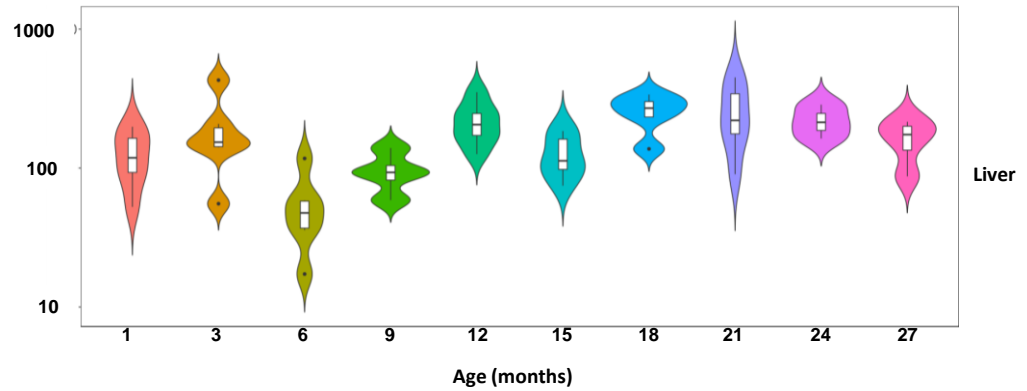
(b)



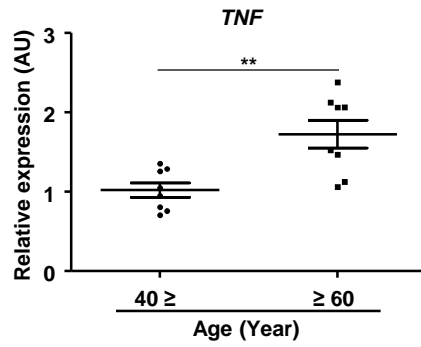
(c)



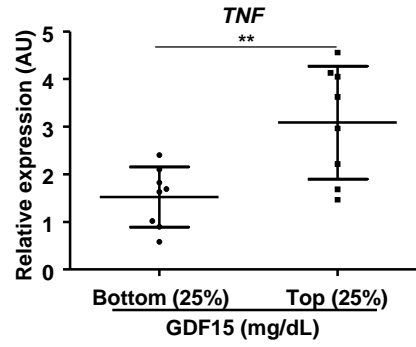
(d)



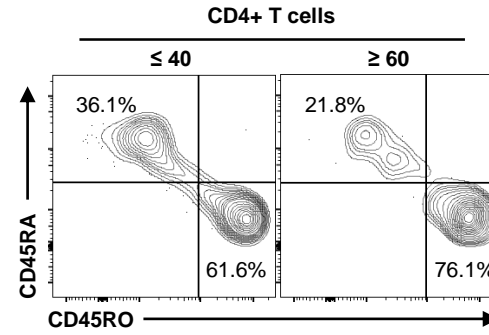
(e)



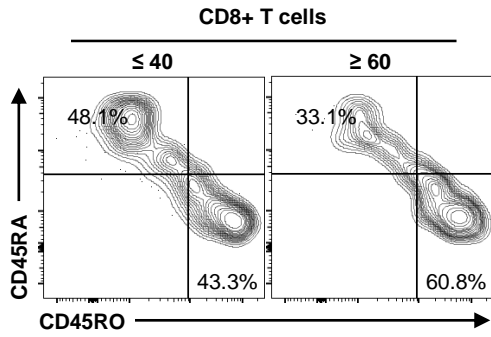
(f)



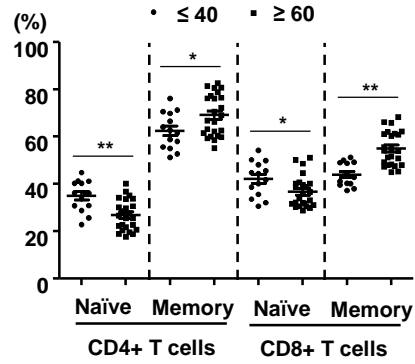
(g)



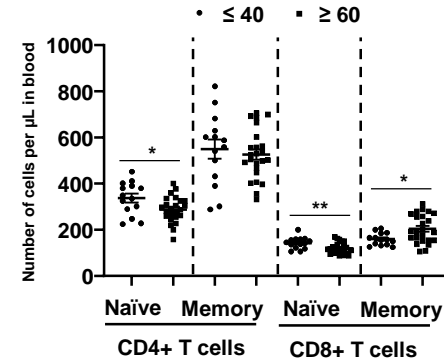
(h)

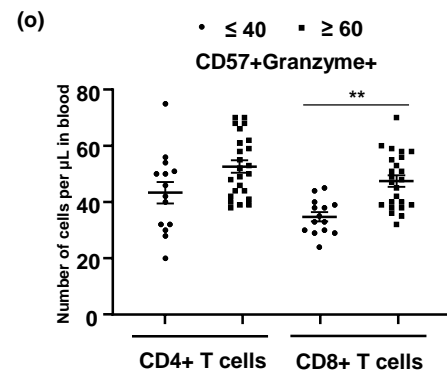
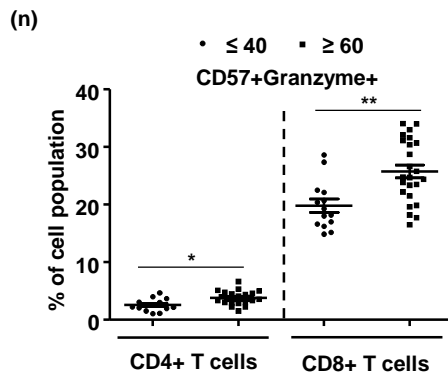
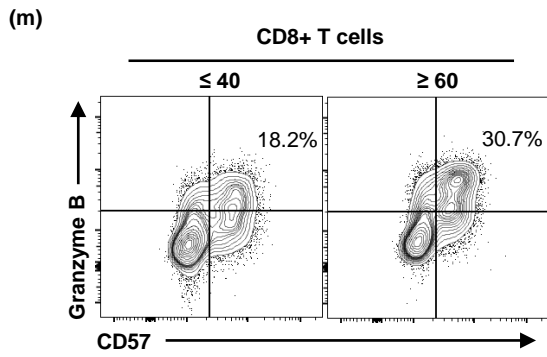
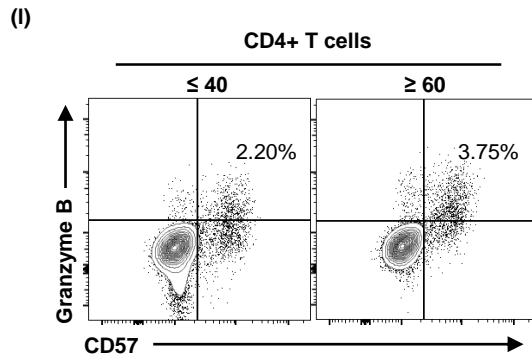
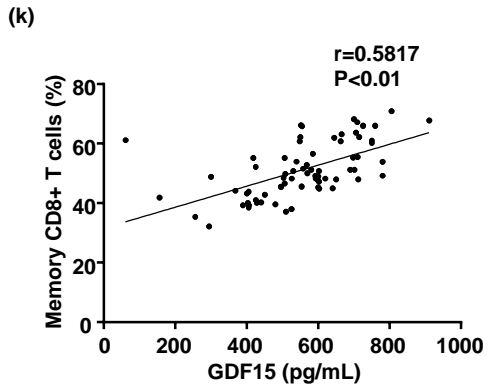


(i)

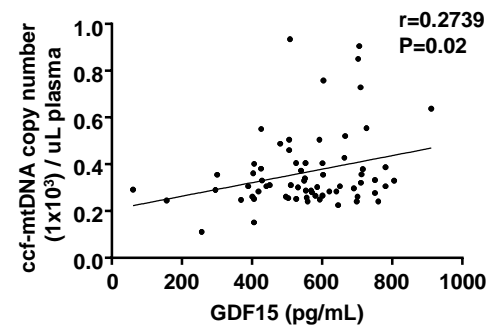


(j)

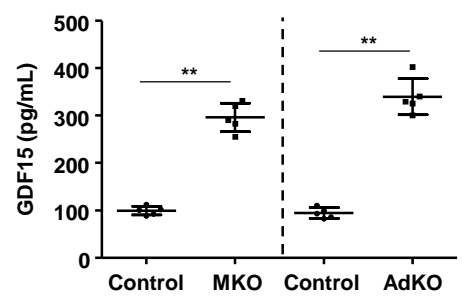




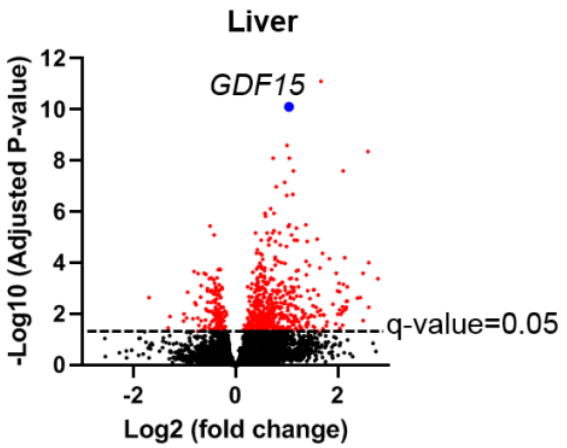
(a)



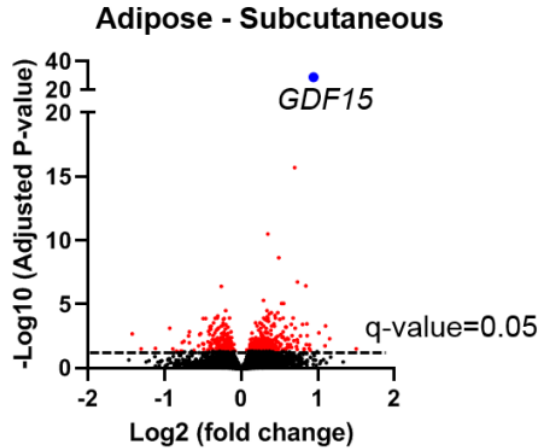
(b)



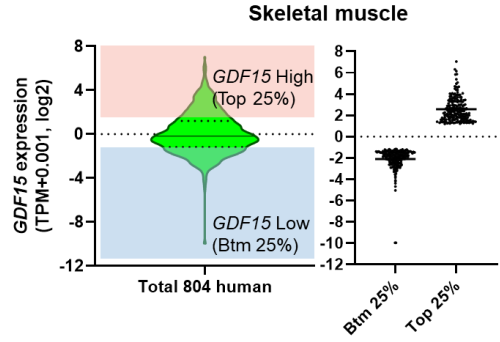
(a)



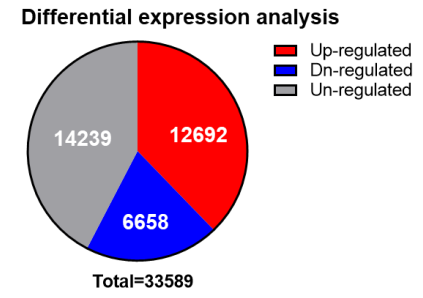
(b)



(a)



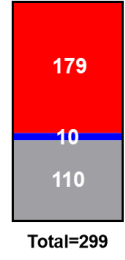
(b)



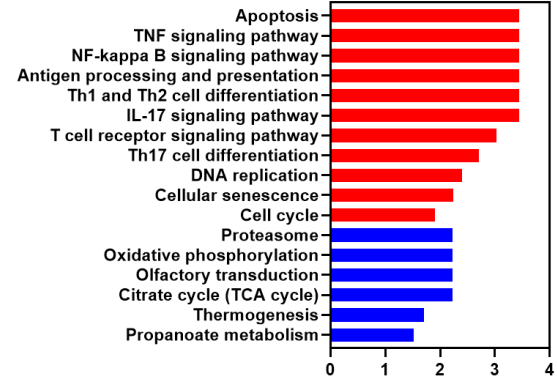
(c)

**KEGG analysis**

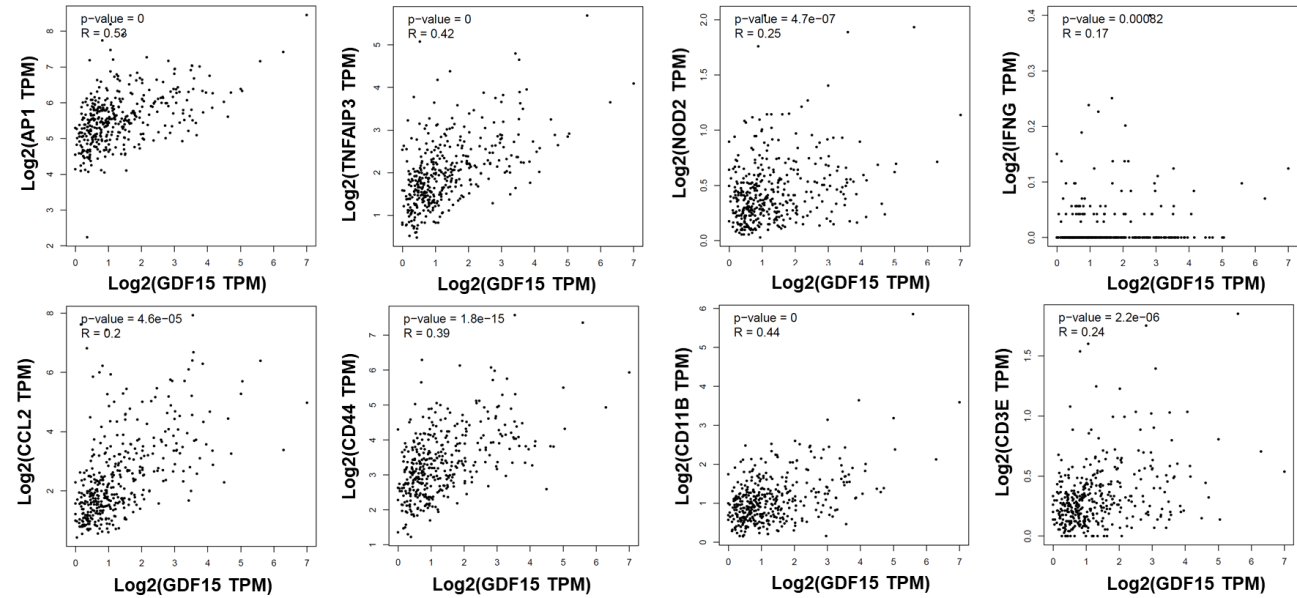
Up-regulated  
Dn-regulated  
Un-regulated



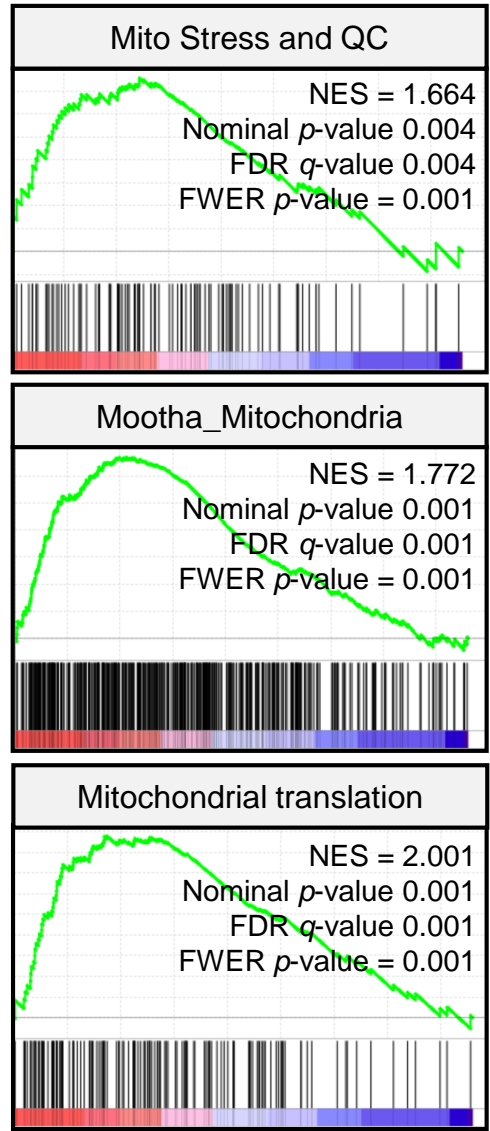
**Up & Dn-regulated pathways (-log10(q-value))**



(d)

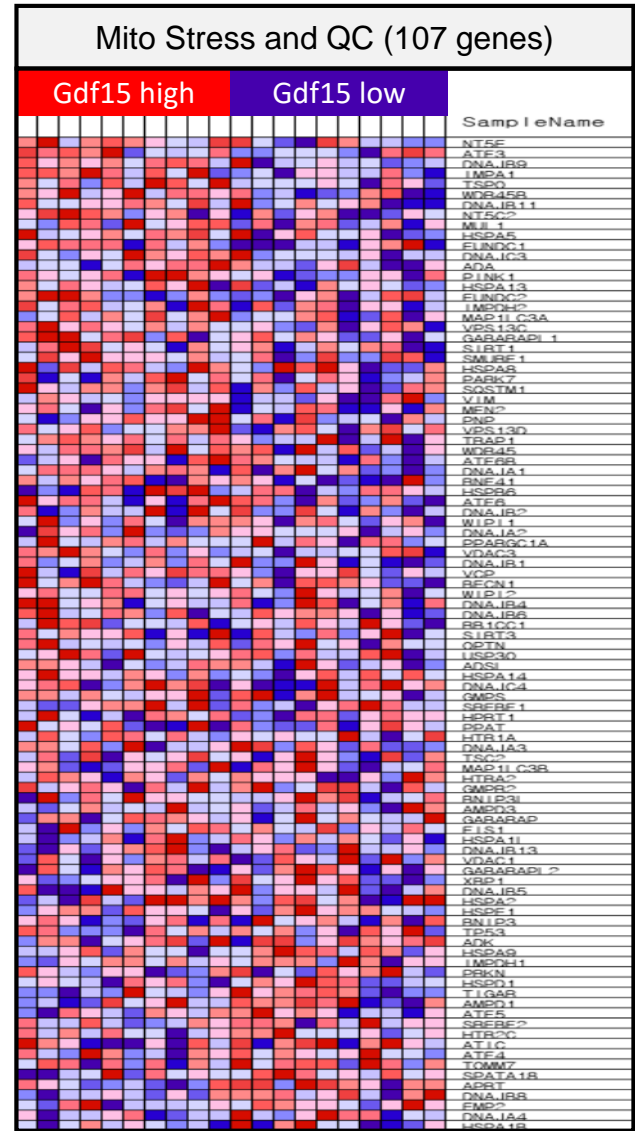


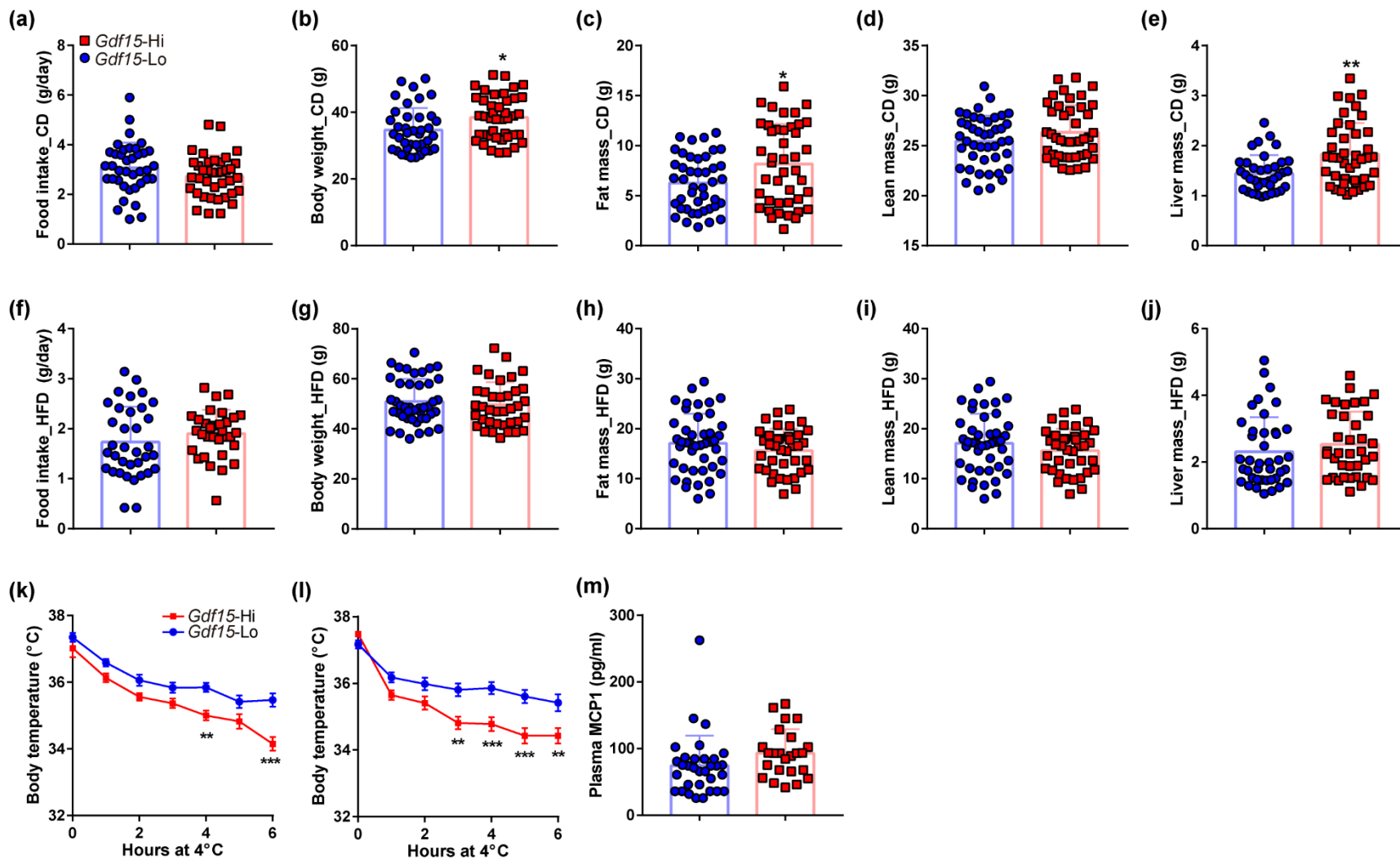
(a)



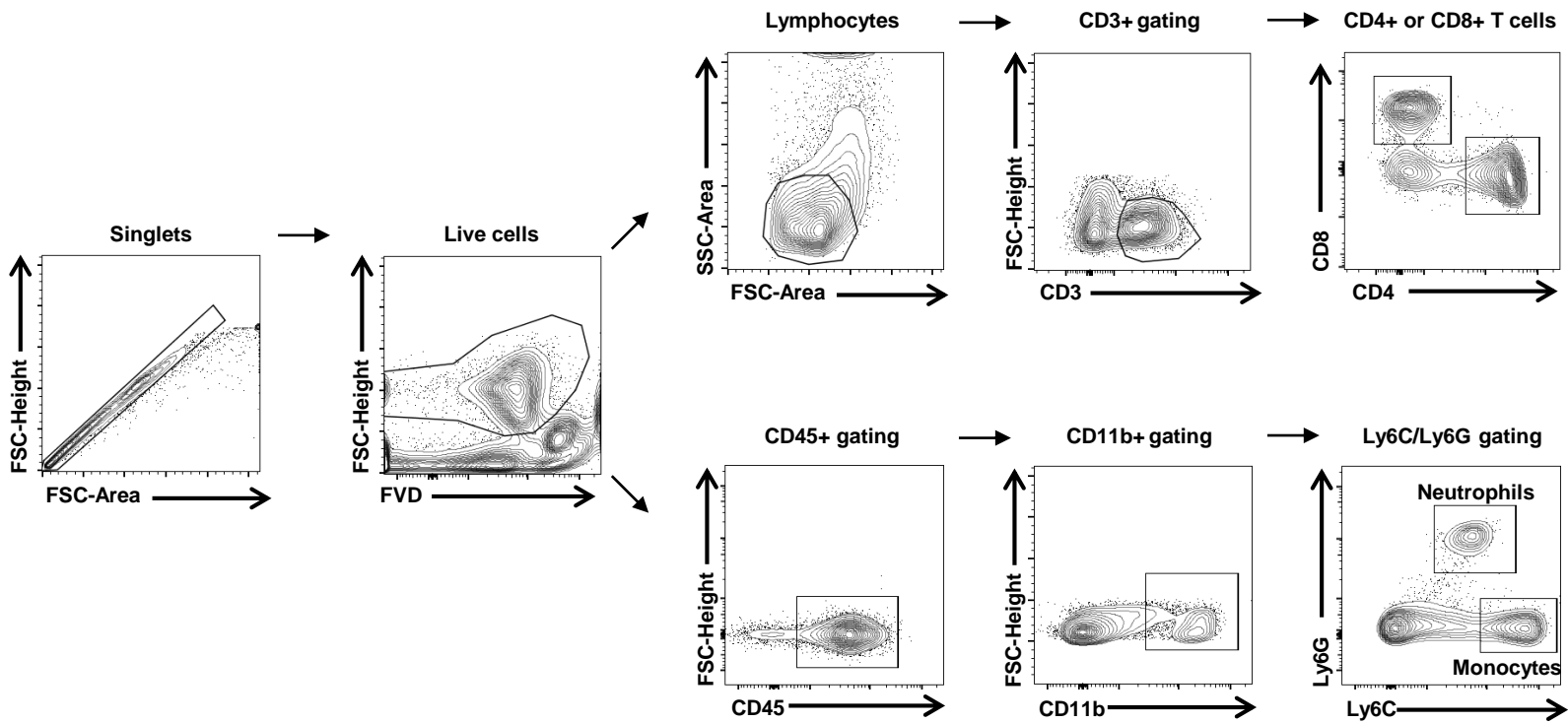
Gdf15 hi(25%)      Gdf15 low(25%)

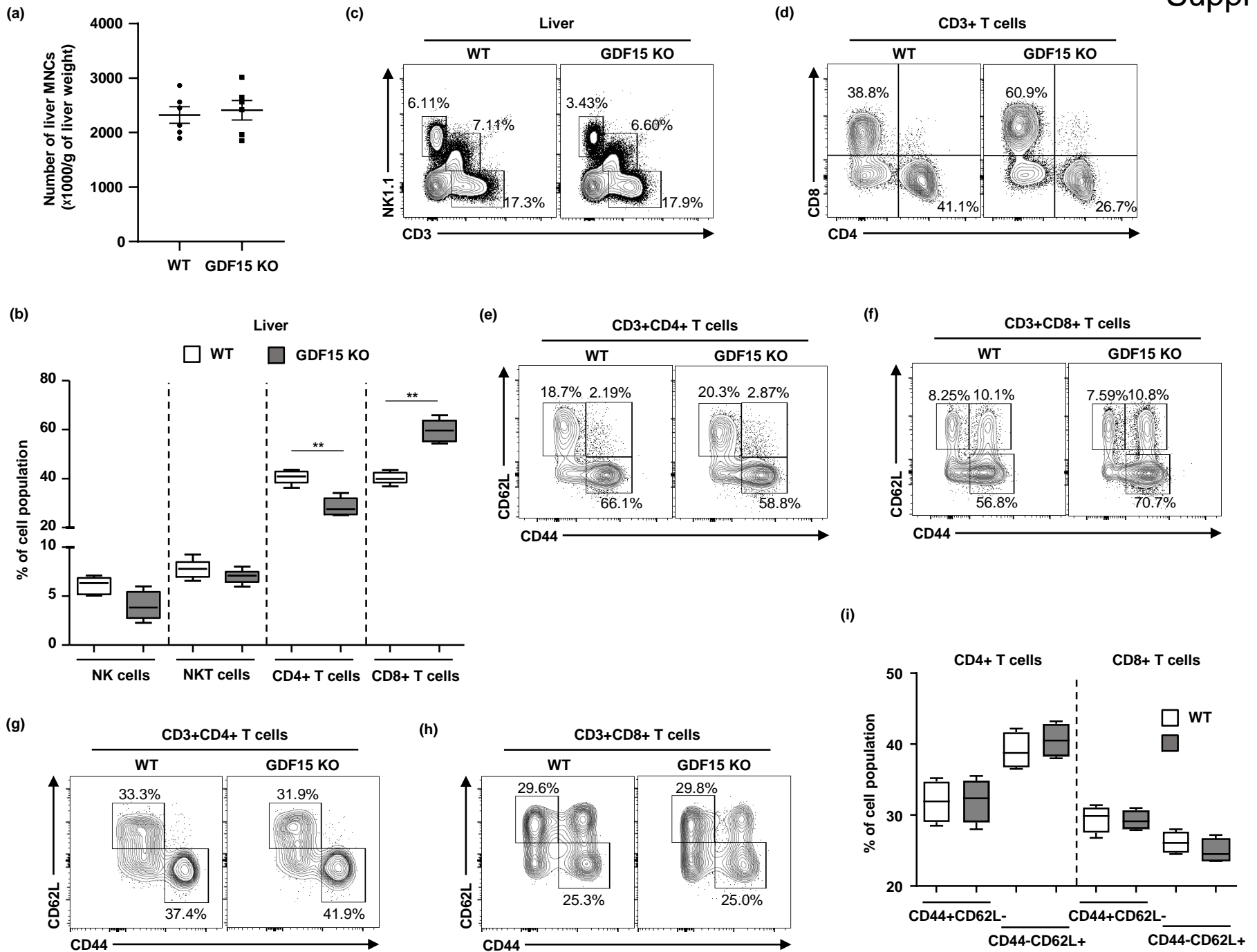
(b)

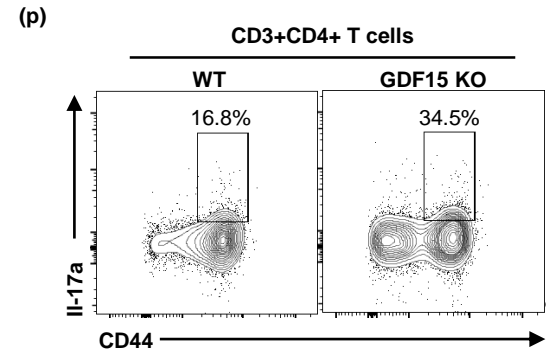
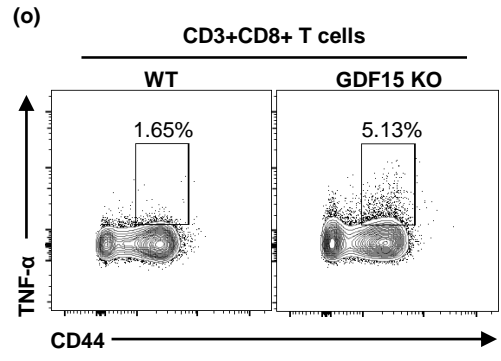
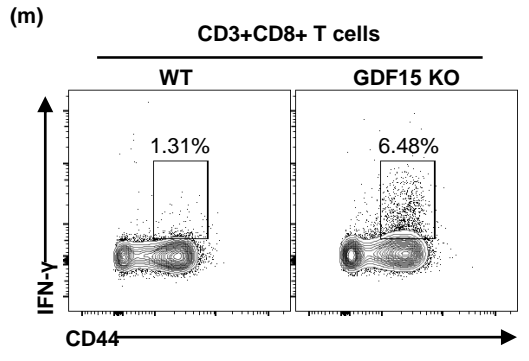
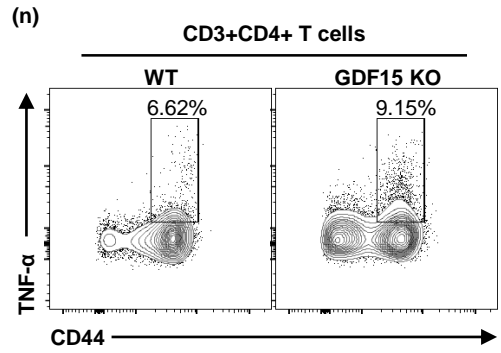
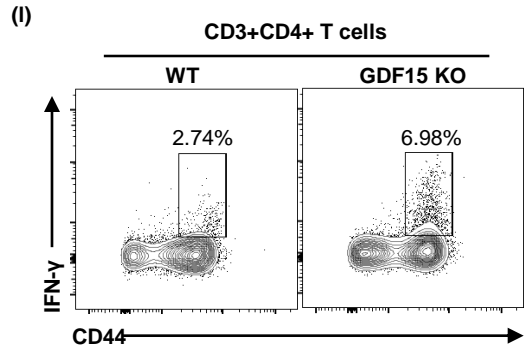
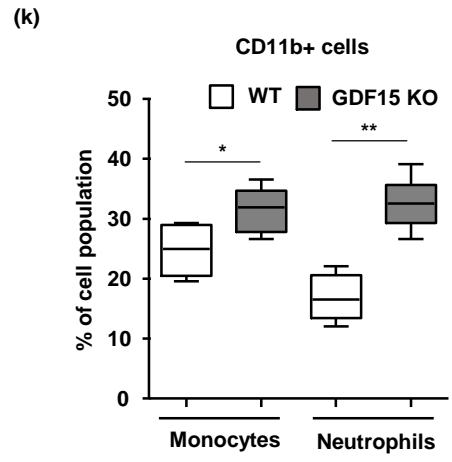
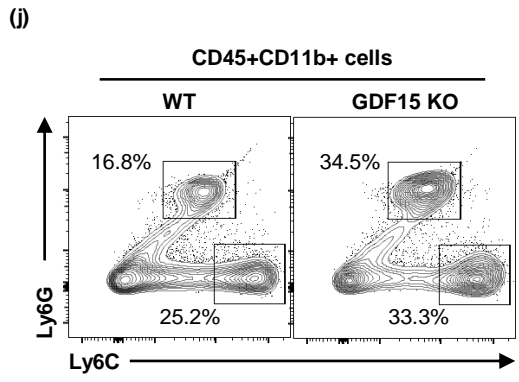


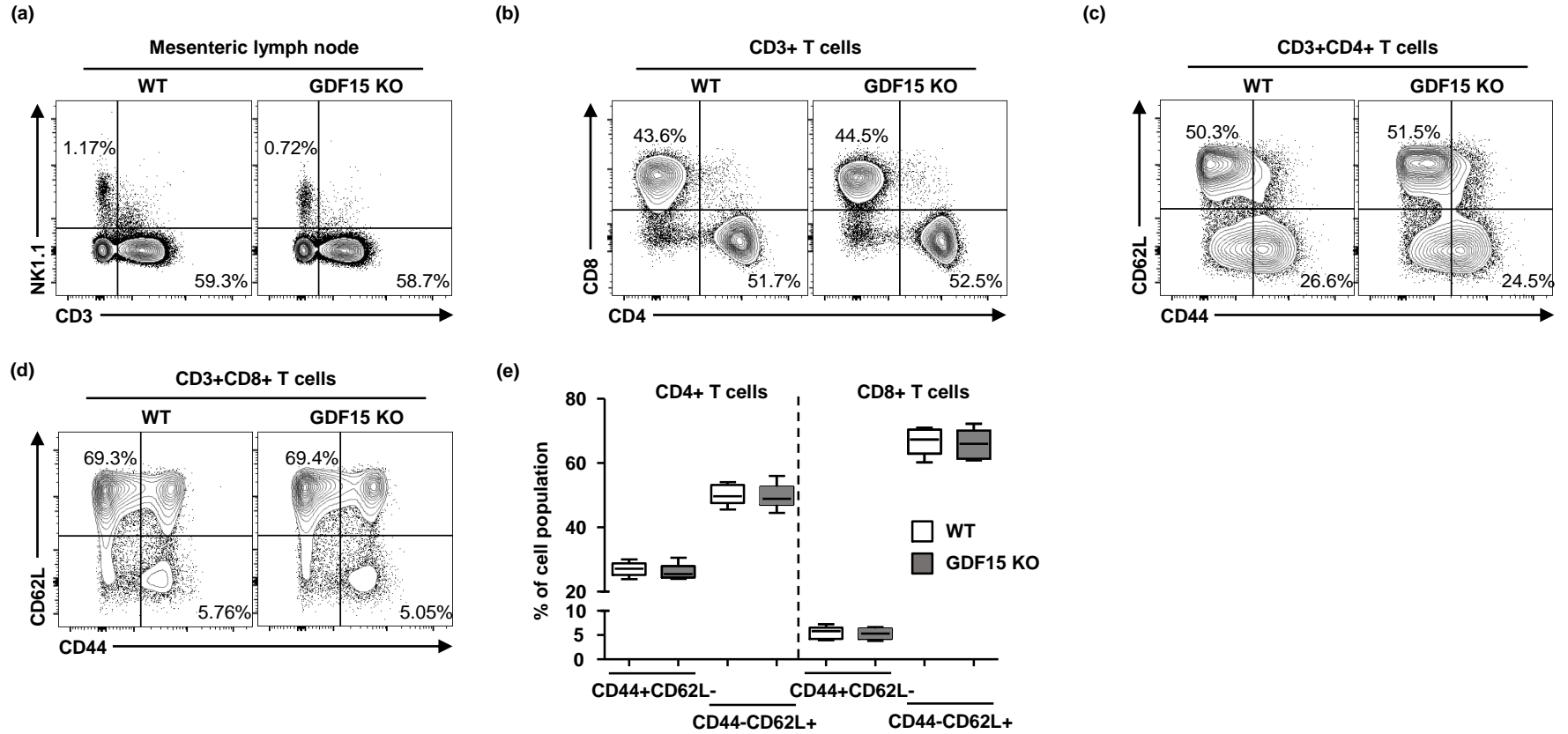




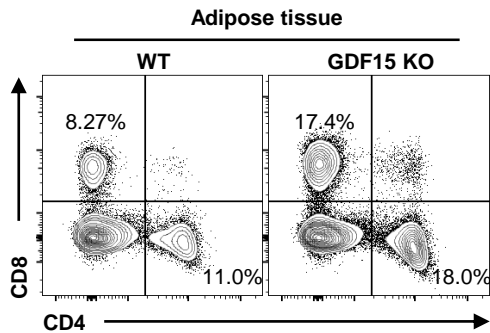




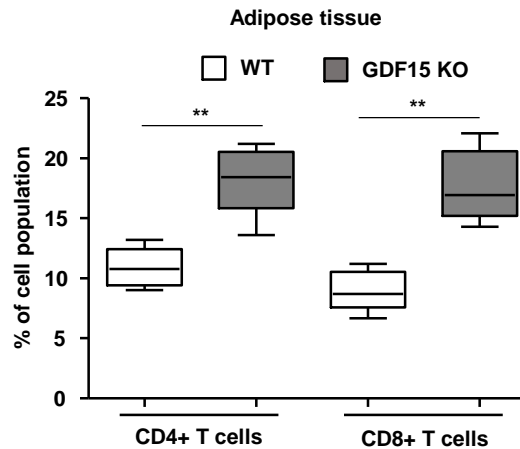




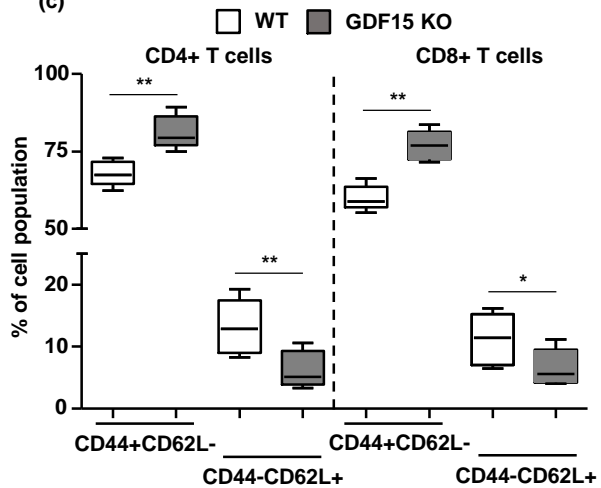
(a)



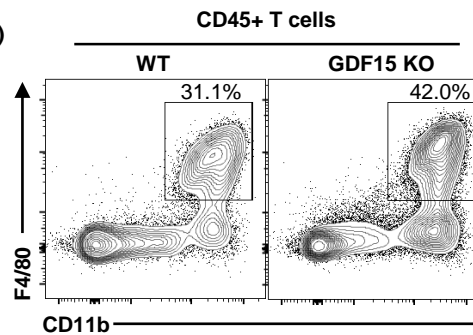
(b)



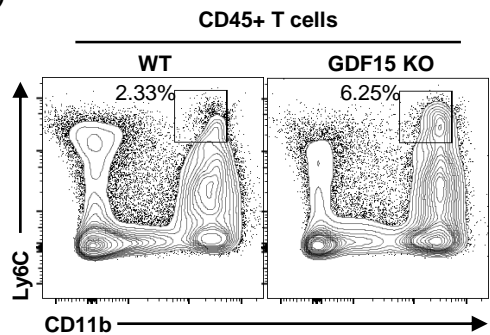
(c)



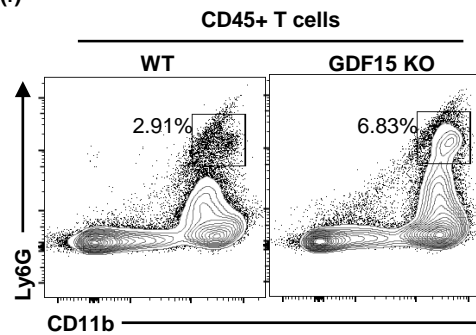
(d)



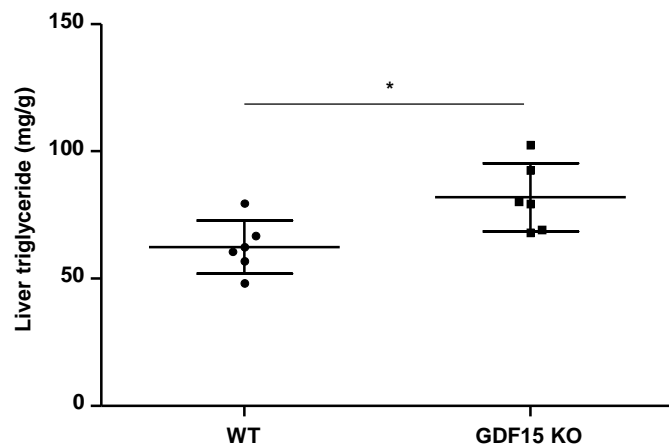
(e)



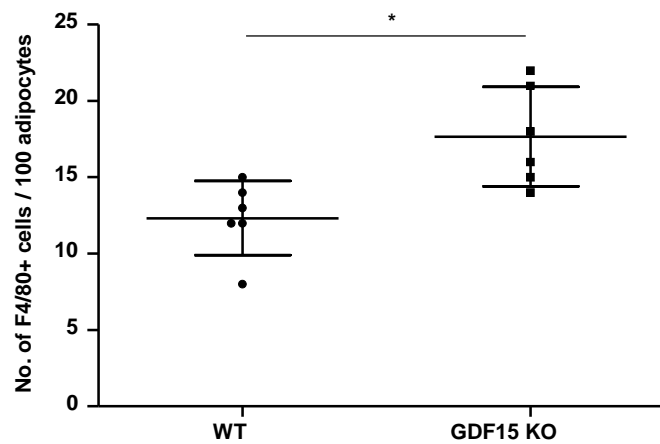
(f)



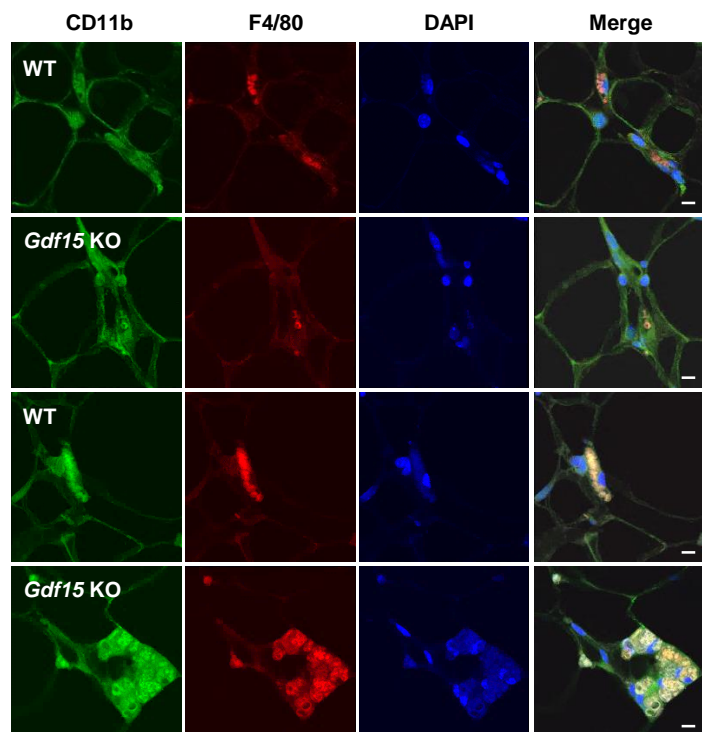
(a)



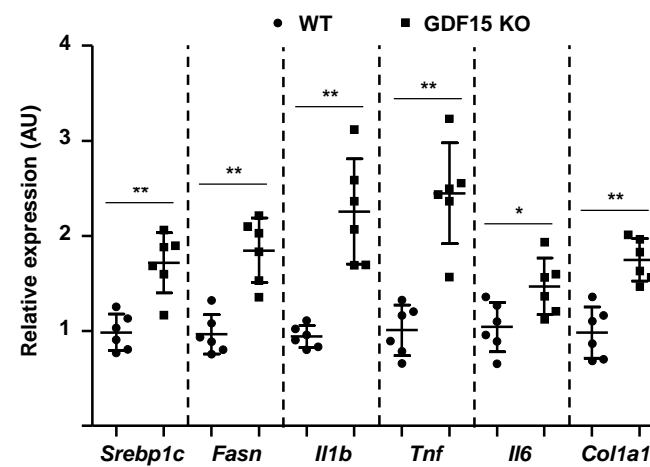
(c)



(b)



(d)



8-week-old

20-month-old

● Vehicle ○ rGDF15 (10ng/mL)

