



Supplementary Materials

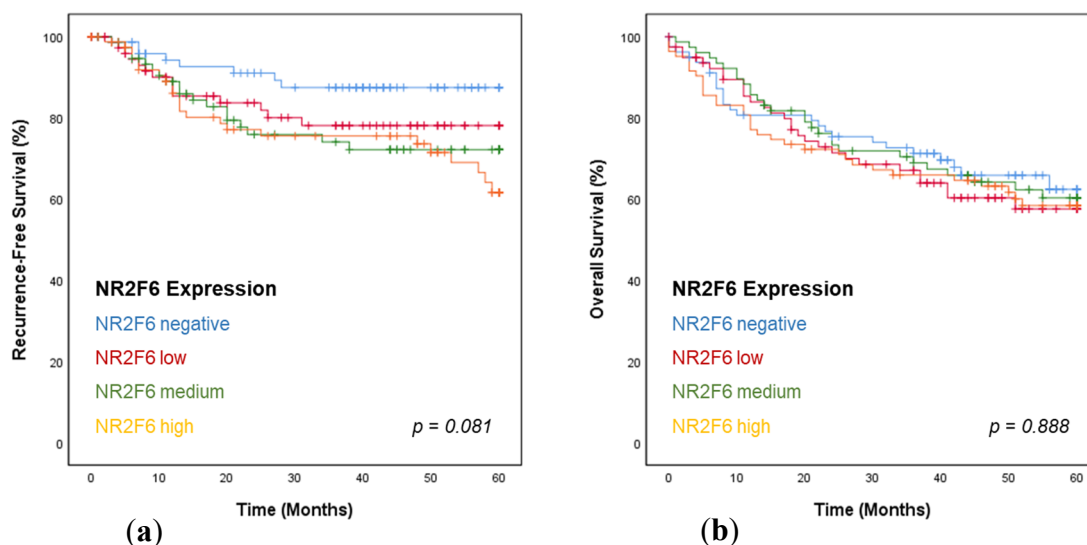


Figure S1. Kaplan Meier Analysis for negative, low, medium, and high NR2F6-expressing HNSCC. There are no significant differences in the (a) RFS ($p = 0.081$) and (b) OS ($p = 0.888$) of HNSCC patients with NR2F6 negative, low, medium, and high expressing PTs.

Table S1. Correlation of LR and the NR2F6 expression in PTs at different tumor sites (Mann-Whitney test, * $p \leq 0.05$; ** $p \leq 0.01$).

Tumor Site	LR	Number of Patients	Median NR2F6 Expression	Mean NR2F6 Expression	<i>p</i> -value
Pharynx	No	120	8.146	10.906	0.014 *
	Yes	28	16.457	16.483	
Larynx	No	79	3.399	6.310	0.010 **
	Yes	34	9.949	13.718	
Oral Cavity	No	56	2.011	6.739	0.040 *
	Yes	20	8.622	9.813	

Table S2. Univariate and multivariate cox regression for 5-year RFS (* $p \leq 0.05$; ** $p \leq 0.01$)

Variable	Univariate Cox Regression			Multivariate Cox Regression		
	<i>p</i> -value	Hazard Ratio	95% Confidence Interval	<i>p</i> -value	Hazard Ratio	95% Confidence Interval
NR2F6 expression	0.028 *	2.296	1.092–4.824	0.014 *	2.551	1.211–5.374
T Stage	0.002 **	1.954	1.267–3.014	0.063	2.004	0.962–4.174
UICC Stage	0.021 *	1.685	1.082–2.625	0.819	0.910	0.404–2.047
p16 expression	0.003 **	0.430	0.246–0.751	0.007 **	0.342	0.156–0.748

Table S3. Correlation of the NR2F6 expression with clinicopathological features of HNSCC patients (Mann–Whitney test).

Clinicopathological Feature	Number of Patients	Mean NR2F6 Expression	Median NR2F6 Expression	p-value
Age	<61	152	9.95	0.496
	>61	176	9.52	
Sex	Female	73	9.83	0.965
	Male	256	9.70	
Alcohol abuse	Yes	142	9.41	0.465
	No	176	11.29	
Nicotine abuse	Yes	281	9.56	0.708
	No	32	9.02	
p16 expression	Yes	86	9.27	0.140
	No	244	11.13	