

Supplementary Materials: Supplementary Materials can be found at www.mdpi.com/xxx/s1.

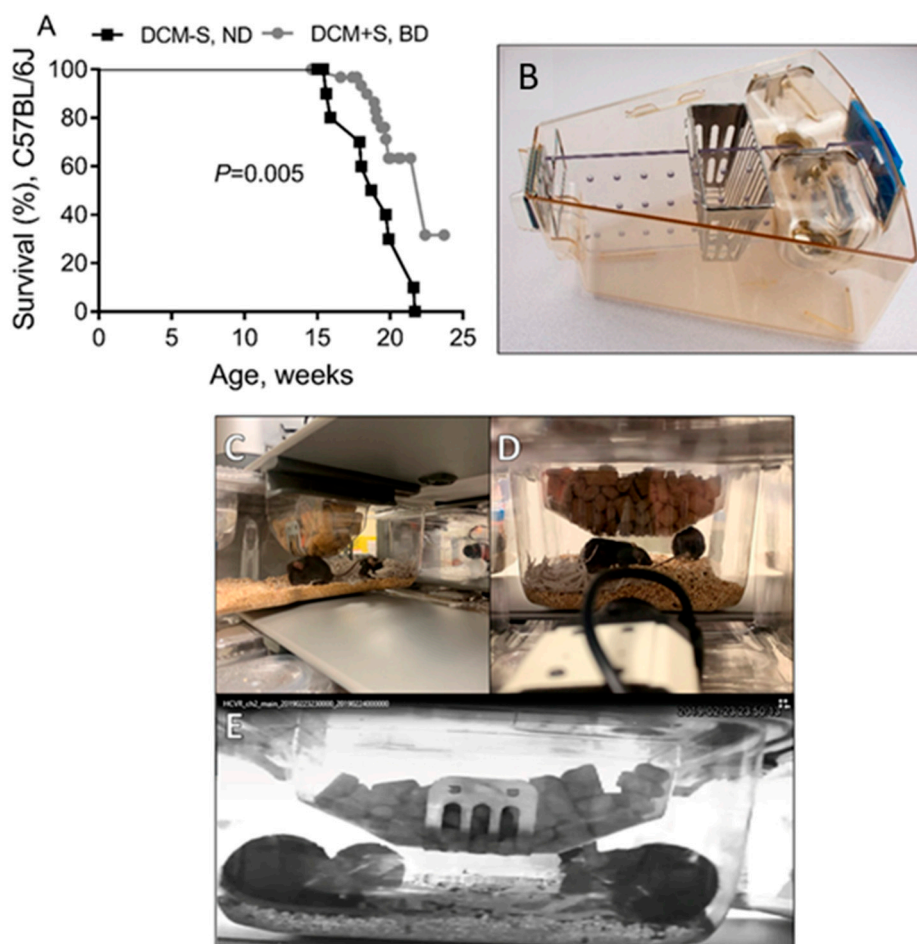


Figure 1. Deprivation of sexual activity shortens survival in mice with DCM. (A) Kaplan Meier survival curve of DCM+S ($n = 32$) vs. DCM-S ($n = 19$), on C57BL/6J genetic background. (B) Example of the porous social divider (Unimice Cage Divider Kit w/Social Holes, Animal Care Systems, Centennial, CO, USA). (C,D) Representative camera setup for breeding activity recording. (E) Example of a still image from video recording using multi-camera digital video recorders (DVR).



DCM-S, BD.avi



DCM+S, BD.avi

Figure 2. Sexual deprivation affects cardiac function in DCM male mice. (A,B) Representative cardiac MRI videos of (A) DCM-S (132 days) presence of the ventricular and atrial dilation, left atrial thrombosis and pleural effusion compared to (B) DCM+S (148 days). Click on the included image to play the video of MRI scans.

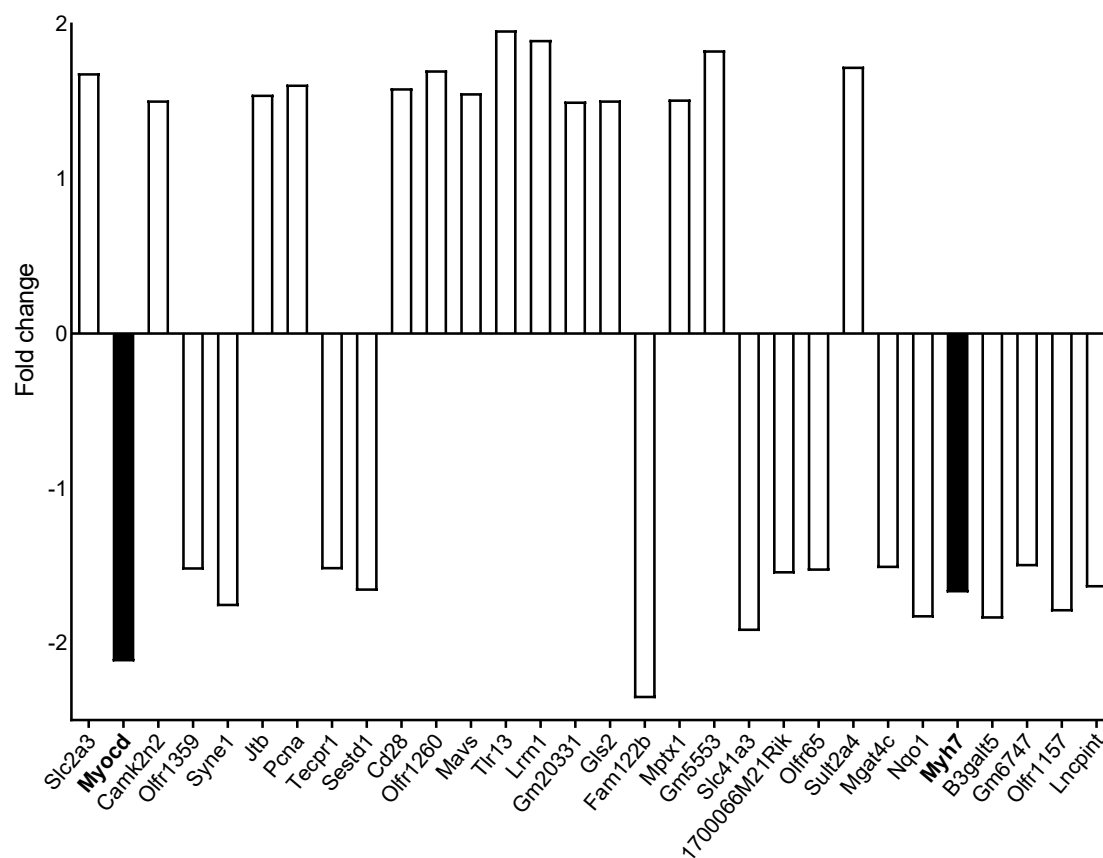


Figure 3. Sexual activity deprivation modulates expression of contractile protein genes *Myocd* and *Myh7* levels in mice with DCM. Fold-change in transcript levels of the differentially expressed genes analyzed by microarray in left ventricular (LV) tissue of DCM+S vs. DCM-S, on breeding diet ($n = 4$ per group).



© 2020 by the authors. Submitted for possible open access publication under the terms and conditions of the Creative Commons Attribution (CC BY) license (<http://creativecommons.org/licenses/by/4.0/>).