

Figure S1. pERK antibody validation

C2C12 cells at 50% confluence were serum starved overnight (serum starvation), and then stimulated with 10% fetal bovine serum for 30 min (serum stimulation). Cells were lysed and subjected to western analysis.

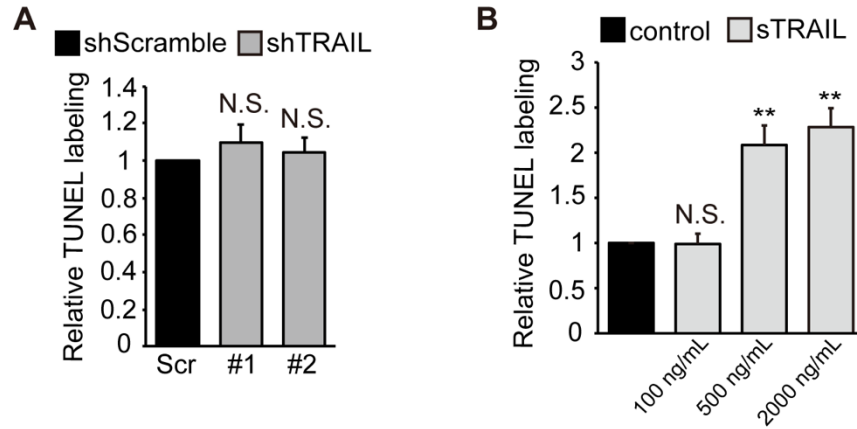


Figure S2. TRAIL at high concentrations induces apoptosis in myocytes.

(A) C2C12 cells were transduced with lentiviruses expressing shTRAIL or shScramble (Scr) followed by 2 days of puromycin selection. Cells were then induced to differentiate for 24 hrs, followed by TUNEL assay. Data were normalized to shScramble (n=4). (B) C2C12 cells were grown with vehicle (Control) or various concentrations of sTRAIL for 6 to 9 hours and induced to differentiate for 24 hrs in the presence or absence of sTRAIL, followed by TUNEL assay. Data were normalized to control (n=5). All error bars represent SEM. Two tailed *t*-test was performed to compare each data to control (first bar). NS: not significant ($P > 0.05$). ** $P < 0.01$.