

Supplementary Material

Development of a Novel Positron Emission Tomography (PET) Radiotracer Targeting Bromodomain and Extra-Terminal Domain (BET) Family Proteins

Ping Bai^{1,2,3}, Yu Lan², Hao Wang², Zude Chen², Stephanie Fiedler², Robin Striar², Xiaoxia Lu^{1*}, Changning Wang^{2*}

¹Chengdu Institute of Biology, Chinese Academy of Sciences, Chengdu 610041, PR China

²Athinoula A. Martinos Center for Biomedical Imaging, Department of Radiology, Massachusetts General Hospital, Harvard Medical School, Charlestown, MA 02129, USA.

³University of Chinese Academy of Sciences, Beijing 100049, PR China

*To whom correspondence should be addressed:

Changning Wang, PhD

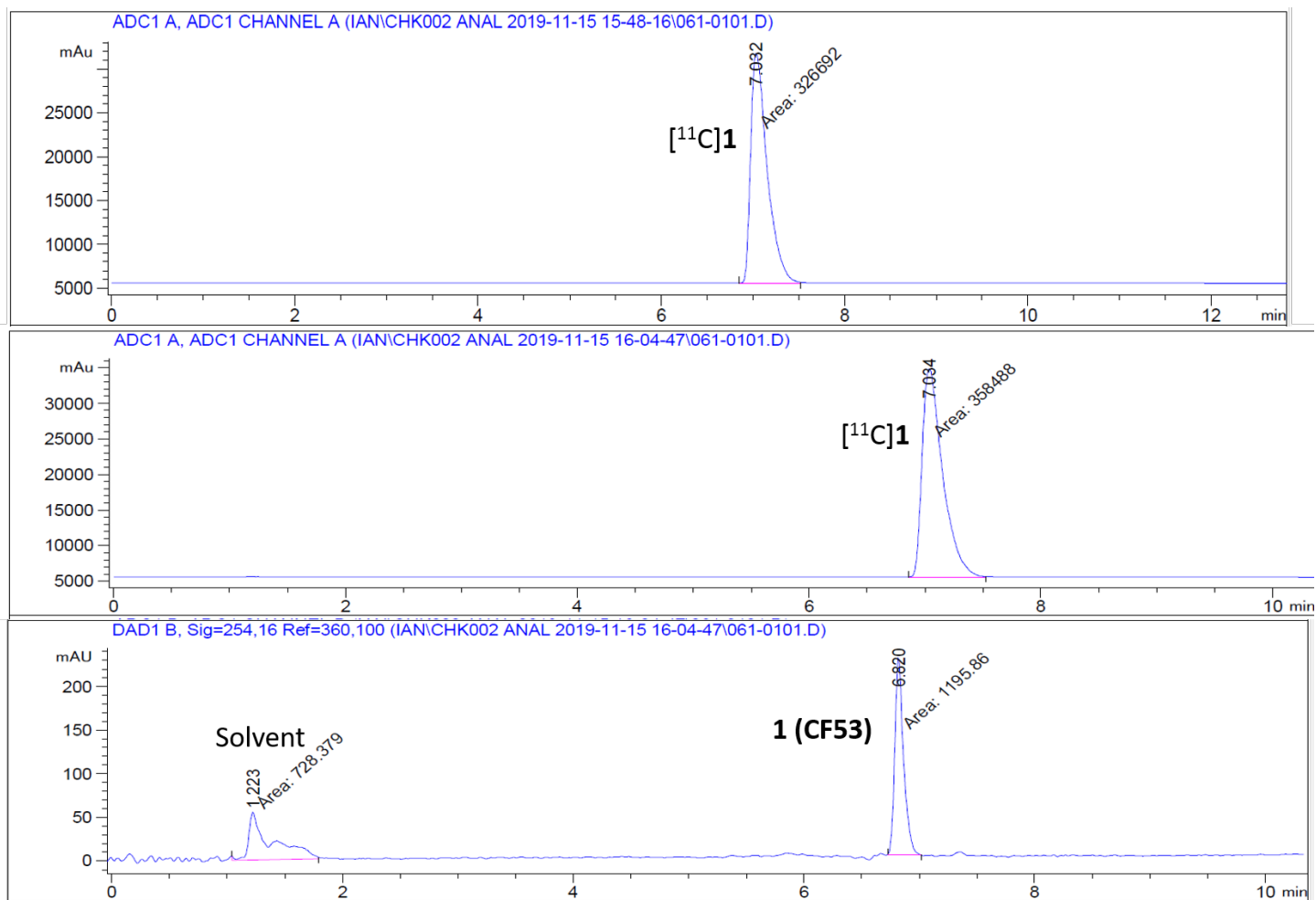
Martinos Center for Biomedical Imaging at Massachusetts General Hospital, Harvard Medical School

149 13th Street, Suite 2301

Charlestown, MA 02129

617-724-3983

cwang15@mgh.harvard.edu



Supplementary Figure S1. The HPLC chromatogram of [¹¹C]1 and the co-injection with standard 1 (CF53).