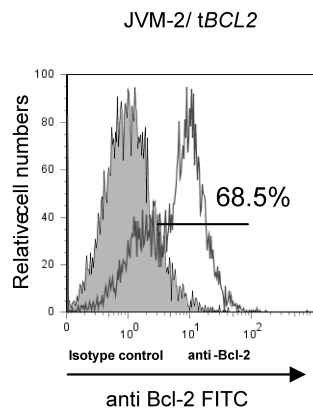
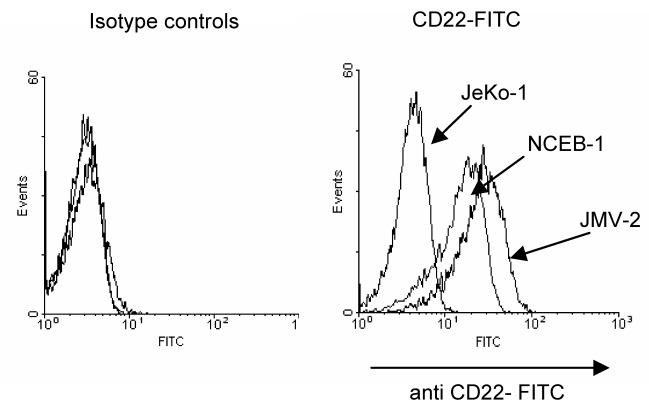


B)



C)



Supplementary Fig.1 (A) NCEB-1, NCEB-1 / tBCL2 cells, JeKo-1, JeKo-1/ tBCL2 cells as well as JVM-2 and JVM-2/ tBCL2 cells were cultured in the presence of BL22 at the indicated concentration for 48 hours. Phosphatidylserine exposure was measured using the annexin V assay. The mean percentage of viable cells (annexin and PI negative) +/- SEM of three different experiments is shown. Paired *t*-tests were performed to test for differences between NCEB-1 and NCEB-1/ tBCL2 cells (*), JeKo-1 and JeKo-1/ tBCL2 cells (#), as well as JVM-2 and JVM-2/ tBCL2 cells (+). * / # / + indicates when the difference between the cells was statistically significant ($p < 0.05$): (*: $p 0.0217$), (#: $p 0.0175$), (+: $p 0.0408$). (B) Bcl-2 expression in JVM-2 cells measured via FACS analysis. (C) Representative data of a CD22 expression analysis for JeKo-1, NCEB-1 and JVM-2 cells. Also shown are the isotype controls.