

Supplementary Material

Effects of Plastic Waste on the Heat-Induced Spalling Performance and Mechanical Properties of High Strength Concrete

Abrahão Bernardo Rohden ¹, Jessica Regina Camilo ¹, Rafaela Cristina Amaral ¹, Estela Oliari Garcez ² and Mônica Regina Garcez ^{3,*}

¹ Environmental Engineering Post-Graduation Program, Department of Civil Engineering, Regional University of Blumenau, Blumenau 89030-001, Brazil; arohden@furb.br (A.B.R.), eng.jessicaregina@gmail.com (J.R.C.), rafa.2796@hotmail.com (R.C.A.)

² Engineering and Built Environment, Faculty of Science, Deakin University, Geelong 3216, Australia; estela.o@deakin.edu.au

³ Civil Engineering Post-Graduation Program: Construction and Infrastructure, Interdisciplinary Department, Federal University of Rio Grande do Sul, Porto Alegre 90035-190, Brazil

* Correspondence: monica.garcez@ufrgs.br; Tel.: +55-51-3308-1330

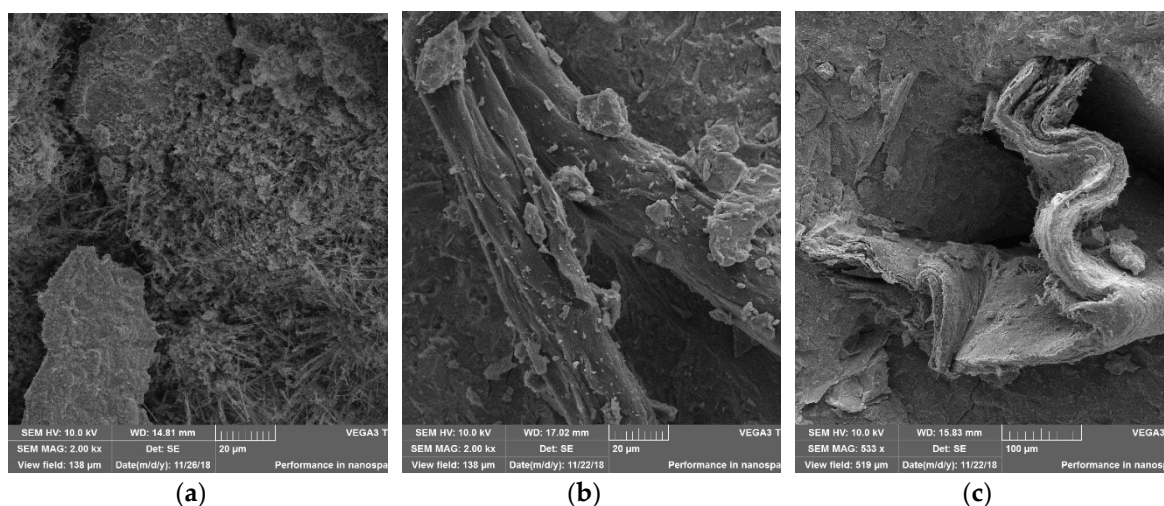


Figure S1. SEM images of Figure 7 without anaglyph effect: (a) Reference concrete matrix; (b) PP fiber in concrete matrix; (c) PW in concrete matrix.



© 2020 by the authors. Submitted for possible open access publication under the terms and conditions of the Creative Commons Attribution (CC BY) license (<http://creativecommons.org/licenses/by/4.0/>).