

1 Supplementary Materials for the Article

2 ***Achillea millefolium* L. and *Achillea biebersteinii***
3 **Afan. Hydroglycolic Extracts–Bioactive Ingredients**
4 **for Cosmetic Use**

5 **Katarzyna Gawel-Bęben ^{1,*}, Marcelina Strzepak-Gomółka ¹, Marcin Czop ², Zuriyadda Sakipova**
6 **³, Kazimierz Głowniak ¹ and Wirginia Kukula-Koch ⁴**

7 ¹ Department of Cosmetology, University of Information Technology and Management in Rzeszów,
8 Sucharskiego 2, 35-225 Rzeszów, Poland; mstrzepak@wsiz.rzeszow.pl (M.S.-G.);
9 kglowniak@wsiz.rzeszow.pl (K.G.)

10 ² Department of Clinical Genetics, Medical University of Lublin, Radziwiłłowska 11, 20-080 Lublin, Poland;
11 marcin.czop@umLub.pl

12 ³ School of Pharmacy, Kazakh National Medical University named after S.D. Asfendiyarov (KazNMU), 88
13 Tole bi street, 050012 Almaty, Kazakhstan; sakipova.z@kaznmu.kz

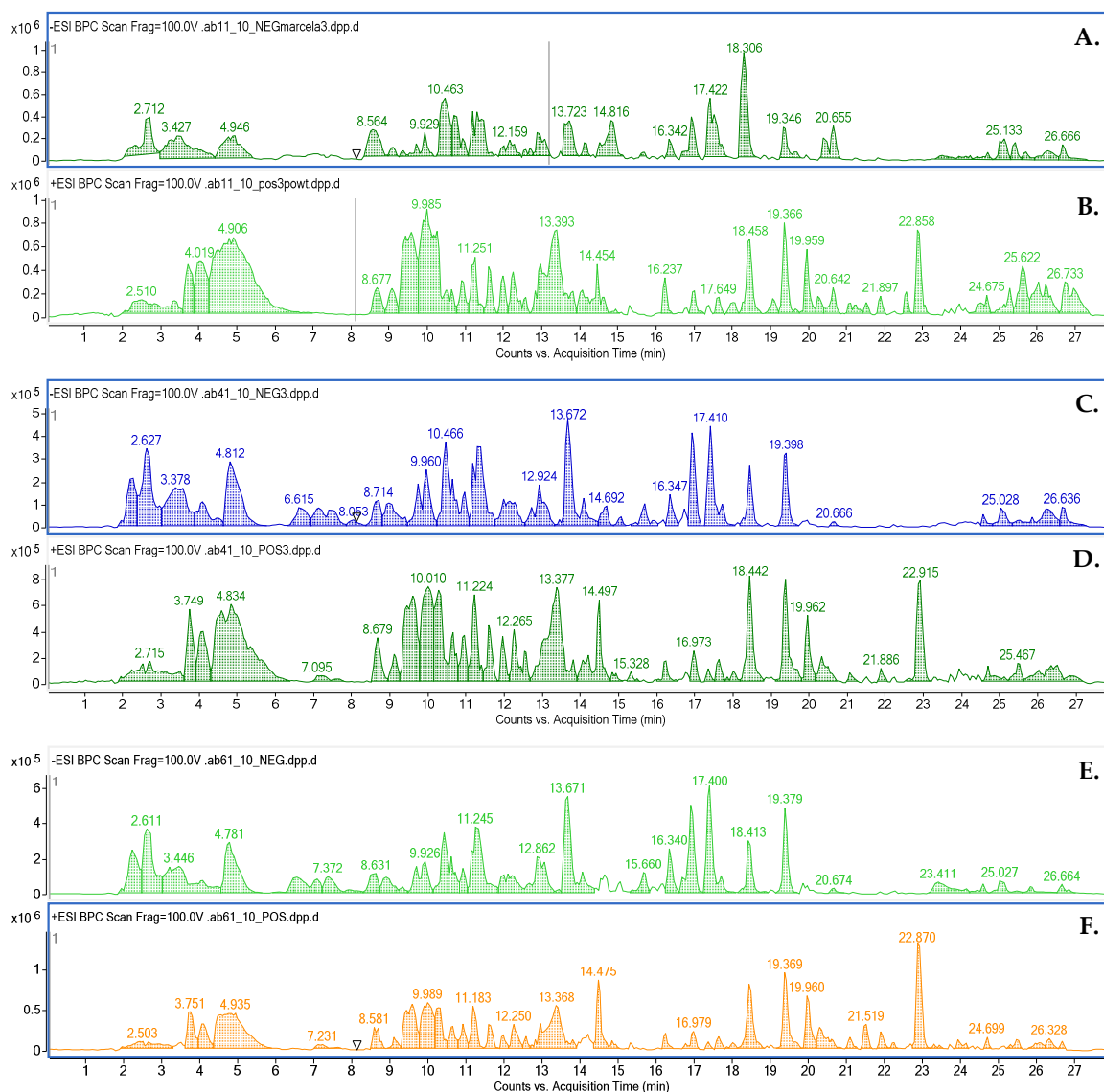
14 ⁴ Department of Pharmacognosy, Medical University of Lublin, Chodźki 1, 20-093 Lublin, Poland;
15 virginia.kukula@gmail.com

16 * Correspondence: kagawel@wsiz.rzeszow.pl; Tel.: +48-17-866-1412

17 Academic Editor: Halina Ekiert and Agnieszka Szopa

18 Received: 30 June 2020; Accepted: 21 July 2020; Published: date

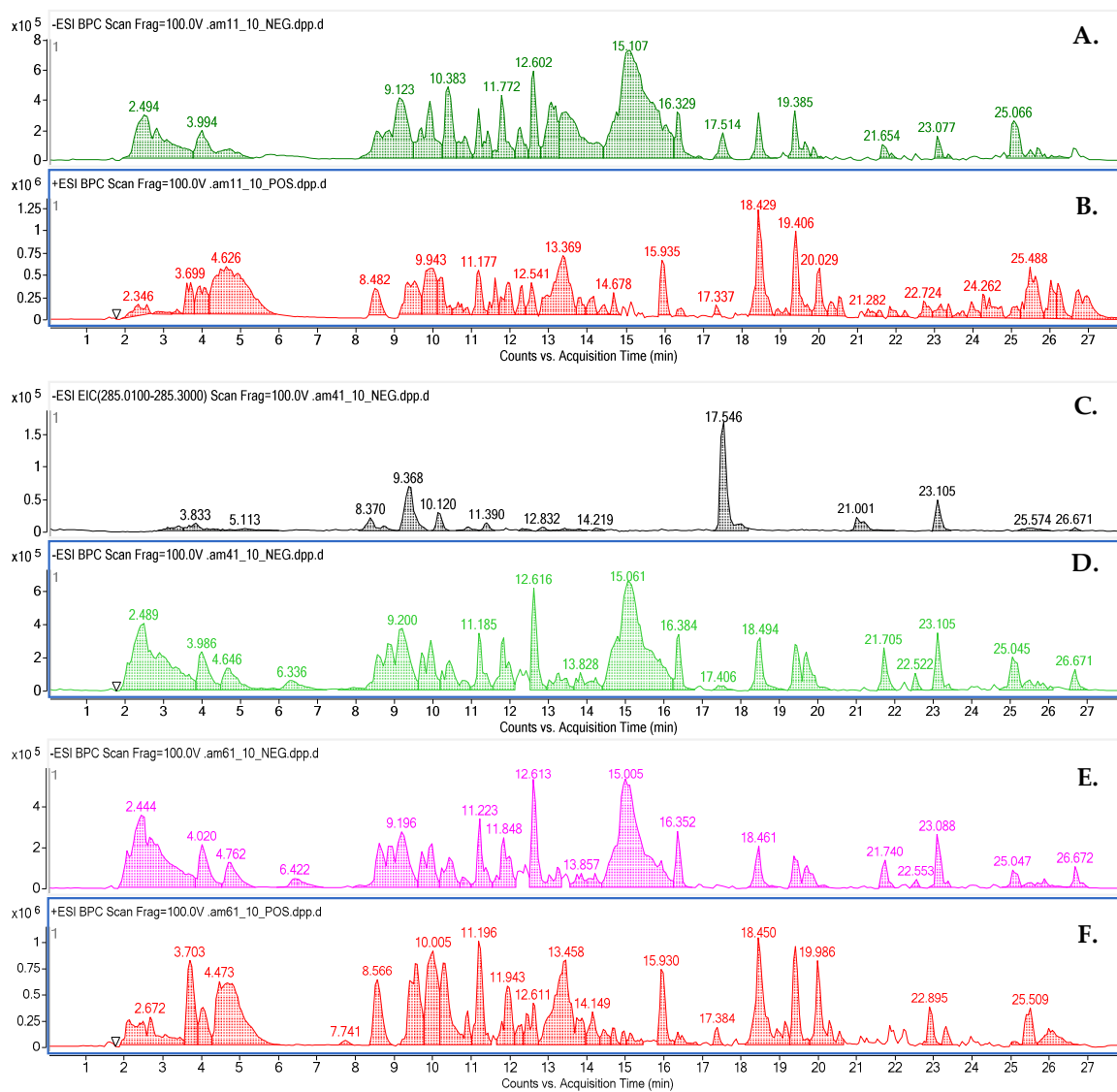
19



20

21 **Figure S1.** The TIC chromatogram recorded in the negative (A, C, E) and positive (B, D, F) ionization
 22 modes for the *A. biebersteinii* hydro-glycolic extract: HG 1:1 (A, B), HG 4:1 (C, D) and HG 6:1 (E, F).

23

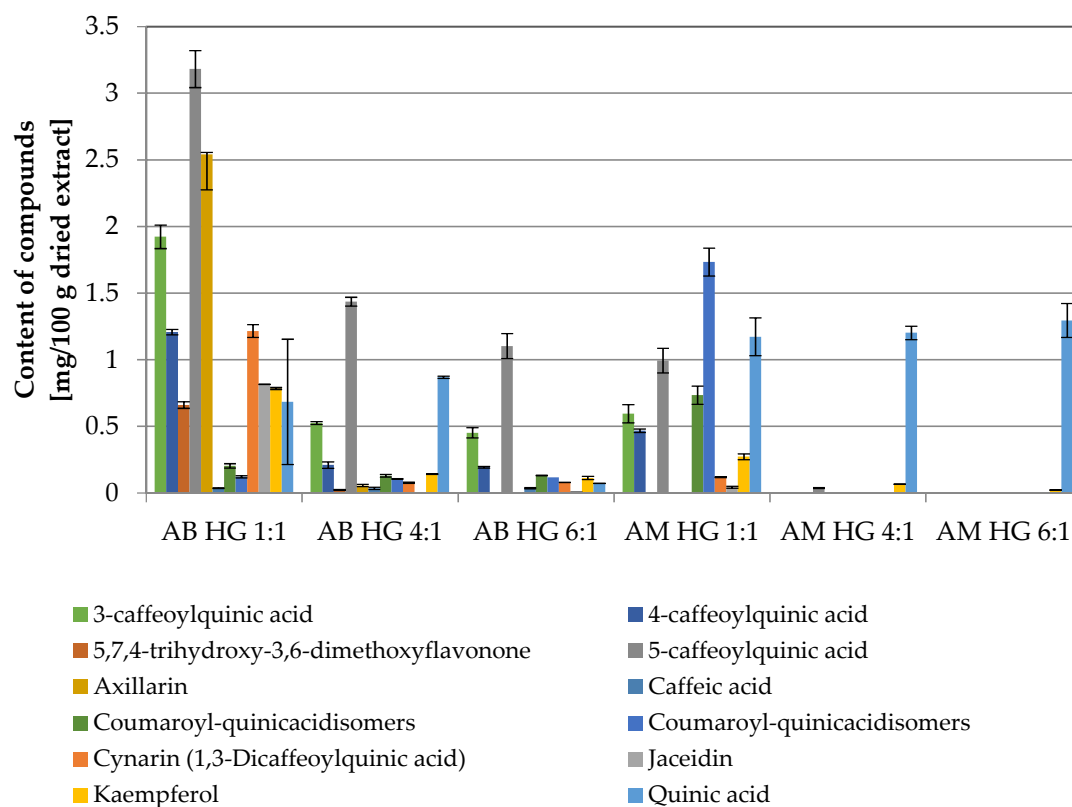


24

25 **Figure S2.** The TIC chromatogram recorded in the negative (A, C, E) and positive (B, D, F) ionization
26 modes for the *A. millefolium* hydro-glycolic extract: HG 1:1 (A, B), HG 4:1 (C, D) and HG 6:1 (E, F).

27

28



29

30 **Figure S3.** The quantitative composition of the studied extracts; values of graph represent mean \pm SD;
 31 AM—*Achillea millefolium*, AB—*Achillea biebersteinii*, HG—hydroglycolic extract

32