

Fig. S1. The morphology of two parasites was in general similar. Both were ~ 2.5 cm in length (A) and had a large scolex with four suckers and pseudo-segmented tegument (B-D).

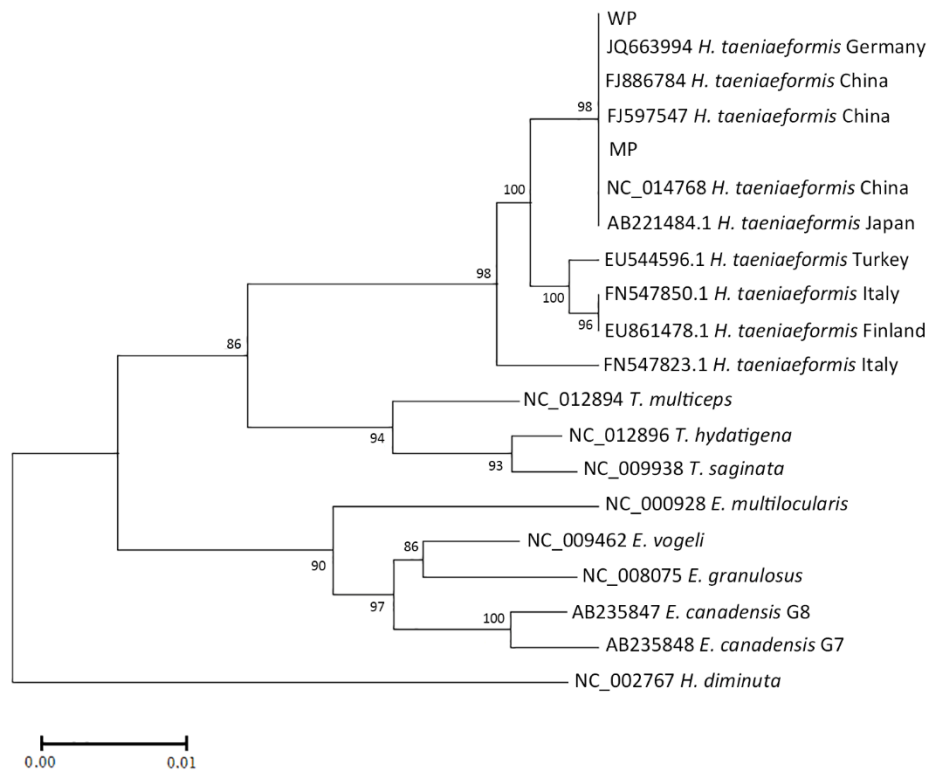


Fig. S2. Phylogenetic Tree constructed based on partial sequences of mitochondrial cytochrome oxidase I (*cox1*). Country of origin and isolate details are given for all *T. taeniaeformis*. GenBank accession numbers for each *cox1* were shown behind ' '. Two WP and MP isolates constituted a separate clade with other isolates from China, Germany, and Japan.

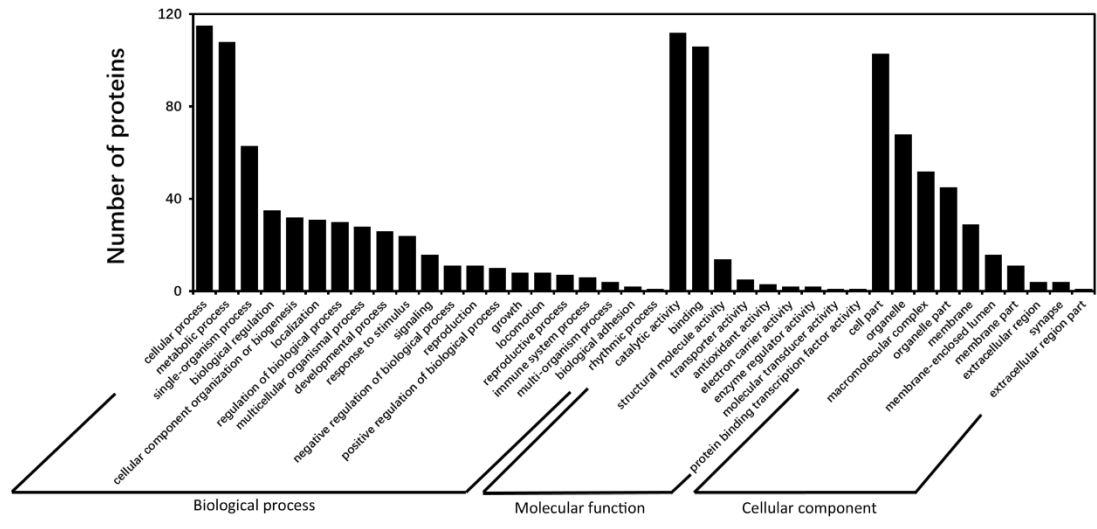


Fig. S3. Function annotations of identified proteins from *H. taeniaeformis* metacestodes.