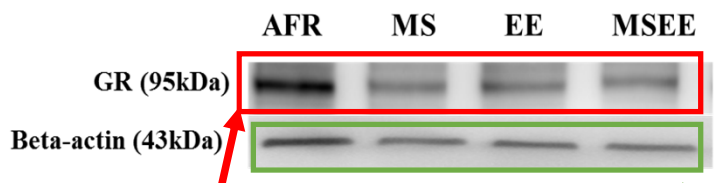


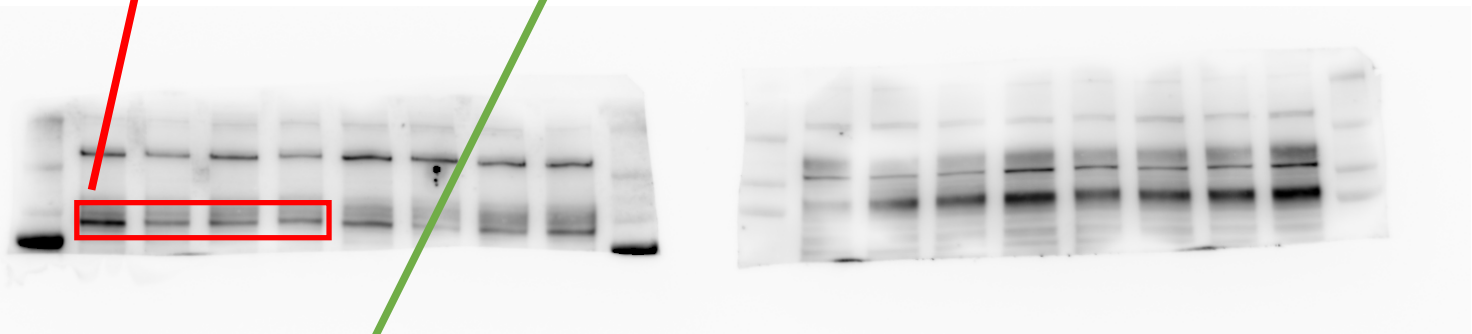
This is the image of Western blots for Figure 5B.

Early-life short-term environmental enrichment counteracts the effects of stress on anxiety-like behavior, brain-derived neurotrophic factor and nuclear translocation of glucocorticoid receptors in the basolateral amygdala.

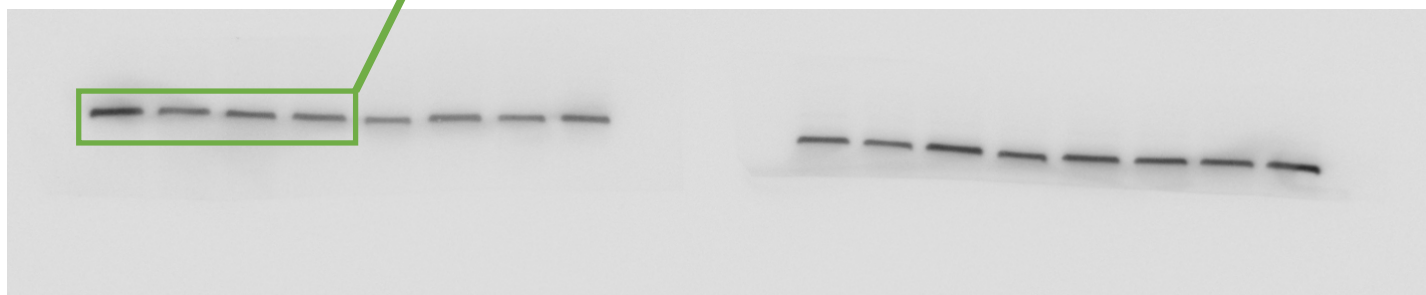
Akshaya Hegde, Shruti Suresh, and Rupshi Mitra.



Raw gel image of GR blot.

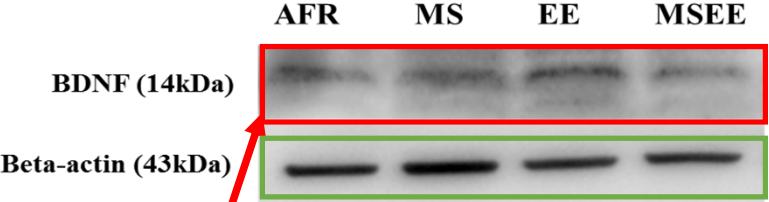


Raw gel image of beta-actin blot.



Please note that the blot was probed for GR on day 1 and the same blot was stripped and probed again with beta actin on the next day. Hence, there are 2 blots with the respective images. GR = glucocorticoid receptor.

This is the image of Western blots for Figure 9B.



Early-life short-term environmental enrichment counteracts the effects of stress on anxiety-like behavior, brain-derived neurotrophic factor and nuclear translocation of glucocorticoid receptors in the basolateral amygdala.

Akshaya Hegde, Shruti Suresh, and Rupshi Mitra.

Raw gel image of BDNF blot.

Raw gel image of beta-actin blot.

Please note that the blot was probed for BDNF on day 1 and the same blot was stripped and probed again with beta actin on the next day. Hence, there are 2 blots with the respective images. BDNF = Brain-derived neurotrophic factor.