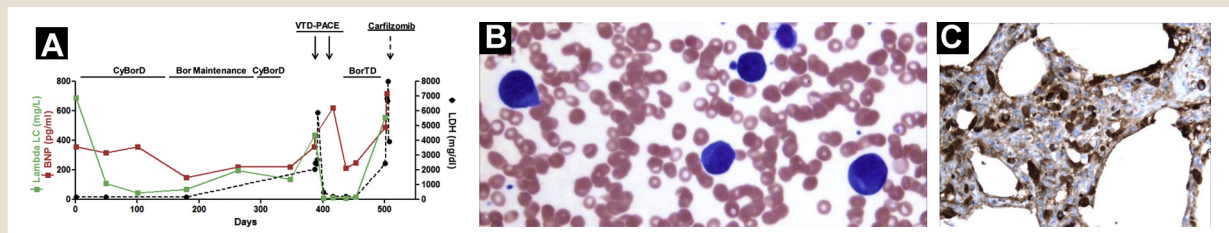


Supplemental Data S1

Supplemental Figure S1A shows the course of a 72-year-old woman diagnosed with amyloidosis and del 17p; a leukemic phase occurred at relapse on about day 400. The patient's disease initially responded to first-line therapy with CyBorD, but she then experienced relapse despite maintenance bortezomib. At diagnosis, there were 40% lambda-restricted plasma cells in the marrow with 3% del 17p-positive cells. At progression to leukemic phase, peripheral blood white blood cell count was 15,100/ μ L with 9% circulating plasma cells. CD138-selected FISH studies revealed complex chromosomal abnormalities including del 17p in 91% of cells. At postmortem, significant amyloid deposits and tissue infiltration with clonal plasma cells were observed. Supplemental Figure S1A shows

the lambda FLC, BNP, and lactate dehydrogenase levels over the course of therapy, with annotations along the top showing treatments received until death on about day 500. Supplemental Figure S1B shows the peripheral blood smear containing circulating plasma cells. Supplemental Figure S1C shows a slide stained for lambda light-chain cells revealing the infiltration of lambda-restricted plasma cells in lung (brown cells; 50 \times magnification) Abbreviations: BNP = b-type natriuretic peptide; CyBorD = cyclophosphamide, bortezomib, and dexamethasone; FISH = fluorescence in-situ hybridization; FLC = free light chain; VTD-PACE = multidrug regimen containing bortezomib, thalidomide, dexamethasone, cisplatin, doxorubicin, cyclophosphamide, and etoposide

Supplemental Figure S1 Clonal Evolution of Disease Into Leukemic Phase. (A) Lambda FLC, BNP, and LDH levels over course of Therapy. (B) Circulating plasma cells. (C) Clonal plasma-Cell Infiltration of lungs



Abbreviations: AL = light-chain Amyloidosis; BNP = b-type Natriuretic peptide; Bor = bortezomib; BorTD = bortezomib, thalidomide, dexamethasone; CyBorD = cyclophosphamide, bortezomib, and dexamethasone; FLC = free light chain; LC = light chain; LDH = lactate dehydrogenase; VTD-PACE = multidrug regimen containing bortezomib, Thalidomide, dexamethasone, cisplatin, doxorubicin, cyclophosphamide, and etoposide.