

Supplementary Figure 1

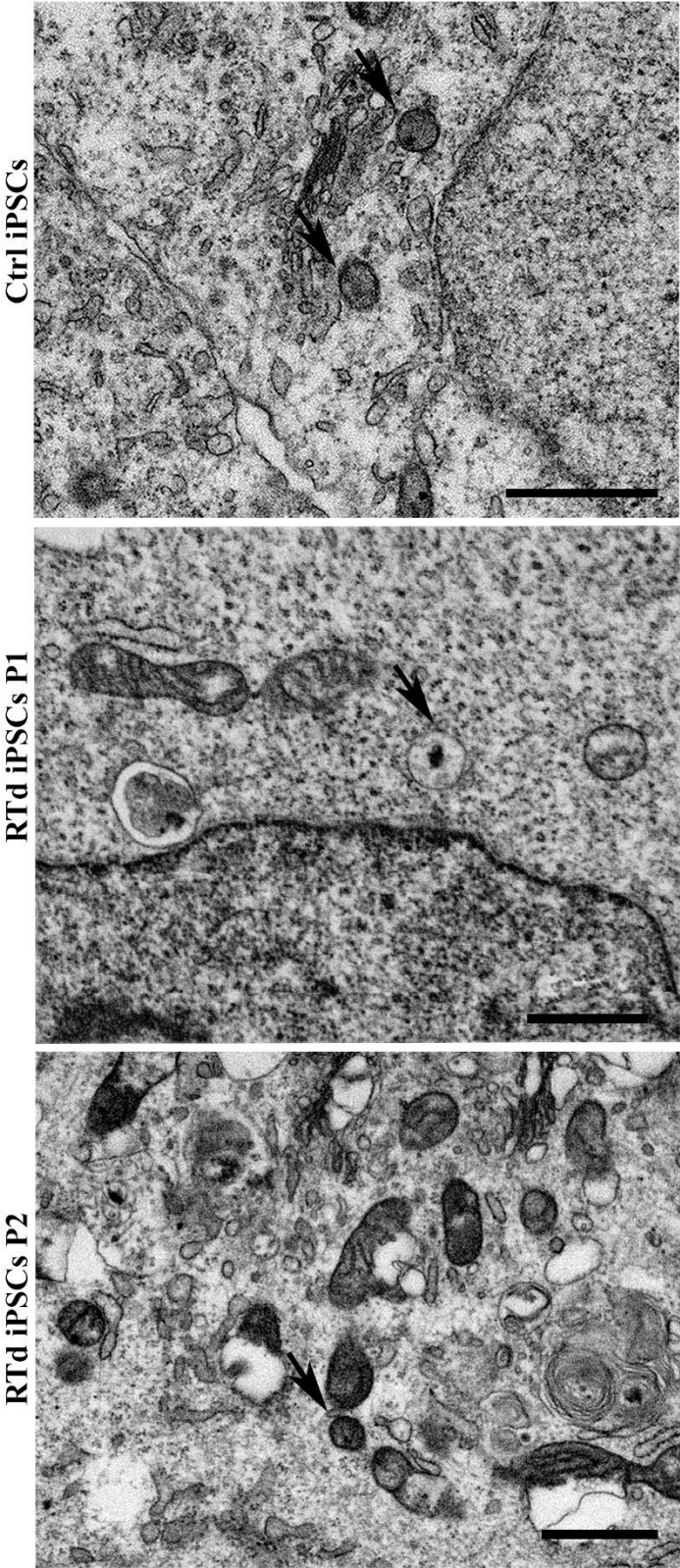


Figure S1: FIB/SEM micrographs showing peroxisomes (Black arrows) in Ctrl iPSCs and RTD cells. These organelles are hardly detectable in RTD cells.

Supplementary Figure 2

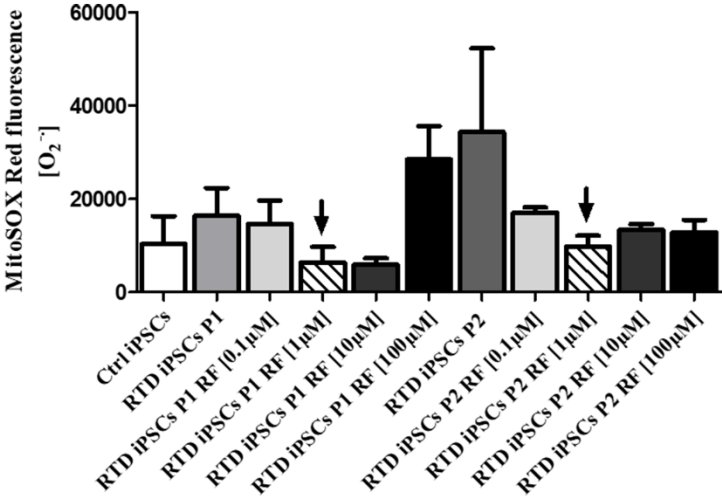


Figure S2: Dose-response effect of RF treatment assessed by MitoSOX Red assay. Black arrows indicate riboflavin 1 µM, which can lower mitochondria superoxide anion levels.