

Supplemental file contents:

Supplemental Table 1: ICD-9 and ICD-10 codes definitions for comorbidities and outcomes.

Supplemental Table 2: Standardized differences between the two groups after propensity score matching.

Supplemental Table 3: Trend in IVUS utilization over the study years.

Supplemental Table 4: Full model for the outcome of mortality

Supplemental Table 5: Full model for the outcome of myocardial infarction

Supplemental Table 6: Full model for the outcome of repeat revascularization

Supplemental Figure: Kaplan Meier curves for the study outcomes A) all-cause mortality, B) myocardial infarction, C) repeat revascularization between PCI with and without intravascular ultrasound in patients presenting with stable coronary artery disease.

Supplemental table 1: ICD codes for comorbidities and outcomes

	ICD-9 code	ICD-10 code
Chronic kidney disease	5853, 5854	N183, N184
End-stage renal disease	5855, 5856, V4511	N185, N186, Z992
Acute Kidney injury	5845, 5846, 5847, 584, 5848, 5849	N17, N170, N171, N172, N178, N179, N990
Atrial fibrillation	42731	I480*, I481*, I482*, I489*
Underweight	78322	V850, Z681, R636
Obesity	2780, 27800, 7802, 27803, 27801	E668, E669, E661, E6609 E663, E669, V853, V853, V8531, V8532, V8533, V8534, V8535, V8536, V8537, V8538, V8539, Z683, Z6831, Z683, Z6833, Z6834, Z6835, Z6836, Z6837, Z6838, Z6839, E662, E6601, V854, V8541, V8542, V8543, V8544, V8545, Z684, Z6841, Z6842, Z6843, Z6844, Z6845
Cardiogenic shock	78551, 78550	R570
Cardiac arrest	4274, 4275, 42741, 42742	I462, I46, I468, I469, I4901, I49, I4902, I9712, I97120, I97121
Blood transfusion	9901, 9902, 9903, 9904, 9905, 9906, 9907, 9908, 9909	30243N0, 30243N1, 30243P0, 30243P1, 30243H0, 30243H1, 30240N0, 30240N1, 30240P0, 30240P1, 30240H0, 30240H1, 30230H0, 30230H1, 30230N0, 30230N1, 30230P0, 30230P1, 30233N0, 30233N1, 30233P0, 30233P1
Sleep apnea	78057, 32723	G4730, G4733
Heart failure	39891, 40201, 40211, 40291, 40401, 40411, 40491, 4280-4289	I5020, I5021, I5022, I5023, I5030, I5031, I5032, I5033, I5040, I5041, I5042, I5043
Bleeding	4552, 4555, 4558, 4560, 45620, 5307, 53082, 5310-5316, 5320-5326, 5330- 5336, 5340-5346, 53501-53561, 56202- 56203, 56212-56213, 5693, 56985, 5780, 5781, 5789, 53783, 56881, 430*, 431*, 432*, 59970, 59971, 59972, 71911,	R310*, R311*, R312*, R319*, M25019, R040*, R041*, R042*, R0481, R0489, R049, I312*, R58* S064X0A, S064X1A, S064X2A, S064X3A, S064X4A, S064X5A, S064X6A, S064X7A, S064X8A, S064X9A, S065X0A, S065X1A, S065X2A, S065X3A, S065X4A, S065X5A, S065X6A, S065X7A, S065X8A, S065X9A, S066X0A,

	7847*, 7848x, 7863*, 4230*, 4590*, 852*, 853*	S066X1A, S066X2A, S066X3A, S066X4A, S066X5A, S066X6A, S066X7A, S066X8A, S066X9A.
Ischemic stroke	433*, 434*, 436*, 4371, 4378, 4379	I63, I65, I66, I6781, I6782, I6789, I679
Anterior ST-elevation myocardial infarction	4100, 41000, 41001, 4101, 41010, 41011	I210, I2101, I2102, I2109
Inferior ST-elevation myocardial infarction	4102, 41020, 41021, 4103, 41030, 41031, 4104, 41040, 41041, 4105, 41050, 41051, 4106, 41060, 41061	I211, I2111, I2119, I2121, I212, I2129, I213,
Non ST-elevation myocardial infarction	4107, 41070, 41071	I214
Unstable angina	4111	I200
Drug eluting stent	3607	0270346, 027034Z, 0270356, 027035Z, 0270366, 027036Z, 0270376, 027037Z, 0271346, 027134Z, 0271356, 027135Z, 0271366, 027136Z, 0271376, 027137Z, 0272346, 027234Z, 0272356, 027235Z, 0272366, 027236Z, 0272376, 027237Z, 0273346, 027334Z, 0273356, 027335Z, 0273366, 027336Z, 0273376, 027337Z, 0270446, 027044Z, 0270456, 027045Z, 0270466, 027046Z, 0270476, 027047Z, 0271446, 027144Z, 0271456, 027145Z, 0271466, 027146Z, 0271476, 027147Z, 0272446, 027244Z, 0272456, 027245Z, 0272466, 027246Z, 0272476, 027247Z, 0273446, 027344Z, 0273456, 027345Z, 0273466, 027346Z, 0273476, 027347Z
Bare metal stent	3606	02703D6, 02703DZ, 02703E6, 02703EZ, 02703F6, 02703FZ, 02703G6, 02703GZ, 02713D6, 02713DZ, 02713E6, 02713EZ, 02713F6, 02713FZ, 02713G6, 02713GZ, 02723D6, 02723DZ, 02723E6, 02723EZ, 02723F6, 02723FZ, 02723G6, 02723GZ,

		02733D6, 02733DZ, 02733E6, 02733EZ, 02733F6, 02733FZ, 02733G6, 02733GZ, 02704D6, 02704DZ, 02704E6, 02704EZ, 02704F6, 02704FZ, 02704G6, 02704GZ, 02714D6, 02714DZ, 02714E6', 02714EZ, 02714F6, 02714FZ, 02714G6, 02714GZ, 02724D6, 02724DZ, 02724E6, 02724EZ, 02724F6', 02724FZ, 02724G6, 02724GZ, 02734D6, 02734DZ, 02734E6, 02734EZ, 02734F6, 02734FZ, 02734G6, 02734GZ
Bifurcation	0044	0270346, 0270356, 0270366, 0270376, 02703D6, 02703E6, 02703F6, 02703G6, 02703T6, 02703Z6, 0270446, 0270456, 0270466, 0270476, 02704D6, 02704E6, 02704F6, 02704G6, 02704T6, 02704Z6
Intravascular ultrasound	0024	B241YZZ, B241ZZ3, B241ZZZ, B240YZZ, B240ZZ3, B240ZZZ
Chronic total occlusion	4142	I2582
Intervention on one coronary vessel	0040	0270346, 027034Z, 02703D6, 02703DZ, 0270446, 027044Z, 02704D6, 02704DZ, 0270356, 027035Z, 02703E6, 02703EZ, 0270456, 027045Z, 02704E6, 02704EZ, 0270366, 027036Z, 02703F6, 02703FZ, 0270466, 027046Z, 02704F6, 02704FZ, 0270376, 027037Z, 02703G6, 02703GZ, 0270476, 027047Z, 02704G6, 02704GZ
Intervention on two coronary vessels	0041	0271346, 027134Z, 02713D6, 02713DZ, 0271446, 027144Z, 02714D6, 02714DZ, 0271356, 027135Z, 02713E6, 02713EZ, 0271456, 027145Z, 02714E6, 02714EZ, 0271366, 027136Z, 02713F6, 02713FZ, 0271466, 027146Z, 02714F6, 02714FZ, 0271376, 027137Z, 02713G6, 02713GZ, 0271476, 027147Z, 02714G6, 02714GZ

Intervention on three coronary vessels	0042	0272346, 027234Z, 02723D6, 02723DZ, 0272446, 027244Z, 02724D6, 02724DZ, 0272356, 027235Z, 02723E6, 02723EZ, 0272456, 027245Z, 02724E6, 02724EZ, 0272366, 027236Z, 02723F6, 02723FZ, 0272466, 027246Z, 02724F6, 02724FZ, 0272376, 027237Z, 02723G6, 02723GZ, 0272476, 027247Z, 02724G6, 02724GZ
Intervention on four or more coronary vessels	0043	0273346, 027334Z, 02733D6, 02733DZ, 0273446, 027344Z, 02734D6, 02734DZ, 0273356, 027335Z, 02733E6, 02733EZ, 0273456, 027345Z, 02734E6, 02734EZ, 0273366, 027336Z, 02733F6, 02733FZ, 0273466, 027346Z, 02734F6, 02734FZ, 0273376, 027337Z, 02733G6, 02733GZ, 0273476, 027347Z, 02734G6, 02734GZ
One stent placed	0045	0270346, 027034Z, 02703D6, 02703DZ, 0270446, 027044Z, 02704D6, 02704DZ, 0271346, 027134Z, 02713D6, 02713DZ, 0271446, 027144Z, 02714D6, 02714DZ, 0272346, 027234Z, 02723D6, 02723DZ, 0272446, 027244Z, 02724D6, 02724DZ, 0273346, 027334Z, 02733D6, 02733DZ, 0273446, 027344Z, 02734D6, 02734DZ
Two stents placed	0046	0270356, 027035Z, 02703E6, 02703EZ, 0270456, 027045Z, 02704E6, 02704EZ, 0271356, 027135Z, 02713E6, 02713EZ, 0271456, 027145Z, 02714E6, 02714EZ, 0272356, 027235Z, 02723E6, 02723EZ, 0272456, 027245Z, 02724E6, 02724EZ, 0273356, 027335Z, 02733E6, 02733EZ, 0273456, 027345Z, 02734E6, 02734EZ
Three stents placed	0047	0270366, 027036Z, 02703F6, 02703FZ, 0270466, 027046Z,

		02704F6, 02704FZ, 0271366, 027136Z, 02713F6, 02713FZ, 0271466, 027146Z, 02714F6, 02714FZ, 0272366, 027236Z, 02723F6, 02723FZ, 0272466, 027246Z, 02724F6, 02724FZ, 0273366, 027336Z, 02733F6, 02733FZ, 0273466, 027346Z, 02734F6, 02734FZ
Four or more stents placed	0048	0270376, 027037Z, 02703G6, 02703GZ, 0270476, 027047Z, 02704G6, 02704GZ, 0271376, 027137Z, 02713G6, 02713GZ, 0271476, 027147Z, 02714G6, 02714GZ, 0272376, 027237Z, 02723G6, 02723GZ, 0272476, 027247Z, 02724G6, 02724GZ, 0273376, 027337Z, 02733G6, 02733GZ, 0273476, 027347Z, 02734G6, 02734GZ

Supplemental Table 2: Standardized difference between the two groups after propensity score matching*

	IVUS N=103,558	No IVUS N=103,558	Mean difference	Standardized difference
Age	73.06 (9.24)	73.01 (9.41)	0.05	0.01
Race	1.21 (0.54)	1.21 (0.54)	0	0
Sex	0.60 (0.49)	0.60 (0.49)	0	0
AIDS	0.00 (0.04)	0.00 (0.04)	0	0
Alcohol abuse	0.01 (0.11)	0.01 (0.11)	0	0
Deficiency Anemias	0.16 (0.37)	0.16 (0.37)	0	0
Connective tissue disease	0.03 (0.18)	0.03 (0.18)	0	0
Congestive heart failure	0.29 (0.45)	0.29 (0.45)	0	0
Chronic pulmonary disease	0.23 (0.42)	0.23 (0.42)	0	0
Coagulopathy	0.05 (0.21)	0.05 (0.21)	0	0
Depression	0.09 (0.28)	0.08 (0.28)	0	0.01
Diabetes mellitus	0.39 (0.49)	0.38 (0.49)	0	0
Drug abuse	0.01 (0.09)	0.01 (0.09)	0	0
Hypertension	0.83 (0.38)	0.83 (0.38)	0	0
Hypothyroidism	0.14 (0.35)	0.14 (0.35)	0	0
Liver disease	0.02 (0.13)	0.02 (0.13)	0	0
Lymphoma	0.01 (0.08)	0.01 (0.08)	0	0
Electrolyte disorders	0.19 (0.39)	0.18 (0.39)	0	0.01
Metastatic cancer	0.01 (0.08)	0.01 (0.08)	0	0
Obesity	0.15 (0.36)	0.15 (0.36)	0	0
Peripheral arterial disease	0.16 (0.37)	0.17 (0.37)	0	0
Psychoses	0.02 (0.14)	0.02 (0.14)	0	0
Pulmonary hypertension	0.05 (0.21)	0.05 (0.21)	0	0
Renal failure	0.21 (0.41)	0.21 (0.41)	0	0
Tumor without metastasis	0.02 (0.13)	0.02 (0.13)	0	0
Peptic ulcer Disease	0.00 (0.07)	0.00 (0.07)	0	0
Underweight	0.02 (0.15)	0.02 (0.15)	0	0
Prior bleeding	0.05 (0.23)	0.05 (0.23)	0	0
Prior cerebral hemorrhage	0.00 (0.04)	0.00 (0.04)	0	0
Prior GI bleeding	0.03 (0.16)	0.03 (0.16)	0	0
Prior ICD	0.02 (0.15)	0.02 (0.15)	0	0
Prior ischemic stroke	0.05 (0.22)	0.05 (0.22)	0	0
Prior pacemaker	0.04 (0.19)	0.04 (0.19)	0	0
Sleep apnea	0.10 (0.29)	0.10 (0.29)	0	0
Prior Smoking	0.26 (0.44)	0.26 (0.44)	0	0
Preexisting AF	0.17 (0.38)	0.17 (0.37)	0	0
Cardiac arrest	0.04 (0.19)	0.04 (0.19)	0	0
Cardiogenic shock	0.05 (0.21)	0.05 (0.21)	0	0
Drug eluting stent	0.84 (0.36)	0.84 (0.36)	0	0
Bare metal stent	0.17 (0.38)	0.17 (0.38)	0	0
Number of vessels	1.34 (0.62)	1.33 (0.61)	0	0.01

Number of stents	1.58 (0.85)	1.58 (0.85)	0.01	0.01
Chronic total occlusion	0.10 (0.30)	0.10 (0.30)	0	0
Bifurcation	0.04 (0.20)	0.04 (0.20)	0	0
Blood transfusion				
Prior coronary artery disease	0.23 (0.42)	0.23 (0.42)	0	0
Prior revascularization	0.20 (0.40)	0.20 (0.40)	0	0
Anterior STEMI	0.07 (0.26)	0.07 (0.25)	0	0
Inferior STEMI	0.09 (0.29)	0.09 (0.28)	0	0.01
NSTEMI	0.34 (0.47)	0.34 (0.47)	0	0
Stable CAD	0.35 (0.48)	0.35 (0.48)	0	0.01
Unstable angina	0.16 (0.37)	0.17 (0.37)	0	0

*Values are presented as mean (Standard deviation).

CAD=Coronary artery disease, STEMI=ST-elevation myocardial infarction,

AIDS=Acquired immunodeficiency syndrome.

Supplemental Table 3: Trend in IVUS utilization over the study years.

Year	2009	2010	2011	2012	2013	2014	2015	2016	2017
IVUS	7,786	9,166	13,844	14,262	12,382	10,803	11,250	12,157	14,137
Total PCI procedures	260,874	241,360	217,981	204,038	188,677	181,188	185,034	193,775	204,250
Percentage of IVUS utilization	3.0%	3.8%	6.4%	7.0%	6.6%	6.0%	6.1%	6.3%	6.9%

Supplemental Table 4: Full model for the outcome of mortality

	Hazard ratio	95% CI	P Value
Intravascular ultrasound	0.903	0.885-0.922	<0.0001
Age	1.04	1.03-1.04	<0.0001
Black race	1.10	1.07-1.12	<0.0001
Other races	0.92	0.89-0.96	<0.0001
Female sex	0.98	0.96-0.99	0.0002
AIDS	1.54	1.29-1.83	<0.0001
Alcohol abuse	1.10	1.03-1.16	0.002
Anemia	1.24	1.22-1.26	<0.0001
Connective tissue disease	1.17	1.13-1.21	<0.0001
Congestive heart failure	1.72	1.7-1.75	<0.0001
Chronic lung disease	1.53	1.51-1.55	<0.0001
Coagulopathy	1.13	1.09-1.16	<0.0001
Depression	1.11	1.09-1.14	<0.0001
Diabetes mellitus	1.29	1.28-1.31	<0.0001
Drug abuse	1.14	1.05-1.23	0.0021
Hypertension	0.85	0.84-0.87	<0.0001
Hypothyroidism	0.95	0.93-0.96	<0.0001
Liver disease	1.39	1.33-1.47	<0.0001
Lymphoma	1.64	1.55-1.74	<0.0001
Electrolytes abnormality	1.32	1.3-1.35	<0.0001
Metastasis	3.77	3.54-4.02	<0.0001
Obesity	0.87	0.85-0.89	<0.0001
Peripheral arterial disease	1.32	1.3-1.34	<0.0001
Psychosis	1.29	1.23-1.35	<0.0001
Pulmonary hypertension	1.27	1.23-1.3	<0.0001
Chronic kidney disease	1.75	1.73-1.78	<0.0001
Tumor without metastasis	1.68	1.6-1.76	<0.0001
Weight loss	1.47	1.41-1.52	<0.0001
Prior bleeding	1.08	1.03-1.12	0.0003
Prior cerebral hemorrhage	2.52	2.1-3.02	<0.0001
Prior GI bleed	1.14	1.08-1.2	<0.0001
Prior ICD	1.41	1.37-1.46	<0.0001
Prior ischemic stroke	1.17	1.14-1.2	<0.0001
Prior pacemaker	1.13	1.1-1.16	<0.0001
Prior revascularization	1.26	1.21-1.32	<0.0001
Sleep apnea	0.90	0.88-0.92	<0.0001
Smoking	0.98	0.97-1	0.0317
Preexisting atrial fibrillation	1.27	1.25-1.29	<0.0001
Cardiac arrest	1.69	1.63-1.75	<0.0001
Cardiogenic shock	1.97	1.91-2.04	<0.0001
Drug eluting stent	Reference	Reference	
Bare metal stent	1.33	1.31-1.35	<0.0001

Number of vessels (reference= 1 vessel)			
2 Vessels	1.06	1.05-1.08	<0.0001
3 Vessels	1.13	1.09-1.16	<0.0001
≥4 Vessels	1.16	1.1-1.22	<0.0001
Number of stents (reference= 1 stent)			
2 Stents	1.02	1.01-1.04	0.0045
3 Stents	1.06	1.04-1.08	<0.0001
≥4 Stents	1.08	1.05-1.12	<0.0001
Chronic total occlusion	1.07	1.05-1.09	<0.0001
Bifurcational	0.94	0.91-0.98	0.0013
Stable CAD	Reference	Reference	
Unstable angina	0.89	0.88-0.90	<0.0001
Non-ST elevation MI	1.10	1.09-1.11	<0.0001
Inferior ST-elevation MI	1.04	1.03-1.05	<0.0001
Anterior ST-elevation MI	1.18	1.16-1.19	<0.0001

Supplemental Table 5: Full model for outcome of myocardial infarction

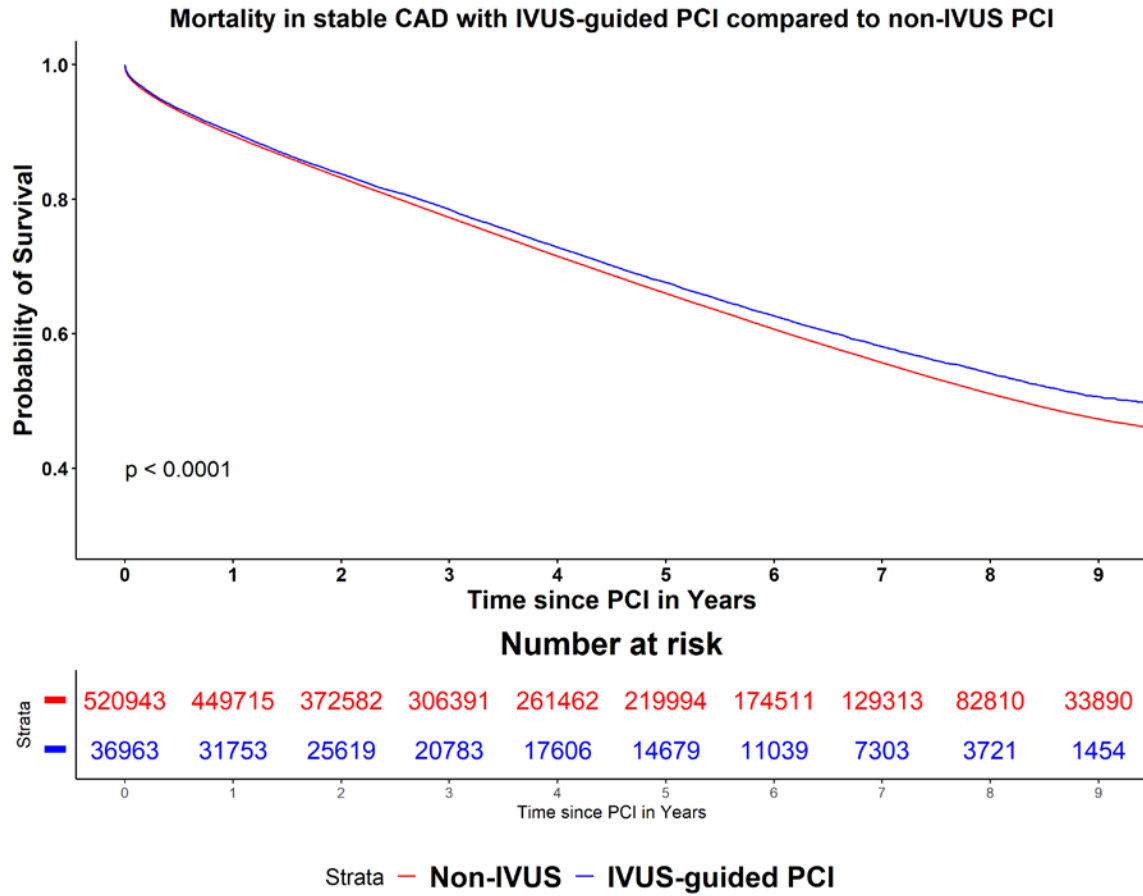
	Hazard ratio	95% CI	P value
Intravascular ultrasound	0.899	0.893-0.904	<0.0001
Age	1.001	1.000-1.001	<0.0001
Black race	1.16	1.15-1.17	<0.0001
Female sex	1.08	1.07-1.09	<0.0001
Anemia	1.16	1.15-1.17	<0.0001
Connective tissue disease	1.07	1.05-1.09	<0.0001
Congestive heart failure	1.37	1.36-1.38	<0.0001
Chronic lung disease	1.14	1.13-1.15	<0.0001
Coagulopathy	1.02	1-1.03	0.03
Depression	1.04	1.03-1.05	<0.0001
Diabetes mellitus	1.38	1.37-1.39	<0.0001
Drug abuse	1.15	1.11-1.2	<0.0001
Hypertension	1.05	1.05-1.06	<0.0001
Hypothyroidism	0.98	0.97-0.99	<0.0001
Liver disease	0.94	0.91-0.96	<0.0001
Lymphoma	1.19	1.15-1.24	<0.0001
Electrolytes abnormality	1.05	1.04-1.06	<0.0001
Metastatic disease	1.16	1.1-1.21	<0.0001
Obesity	0.93	0.92-0.94	<0.0001
Peripheral arterial disease	1.27	1.26-1.28	<0.0001
Psychosis	1.11	1.09-1.14	<0.0001
Renal disease	1.50	1.49-1.51	<0.0001
Tumor without metastasis	1.07	1.05-1.1	<0.0001
Underweight	1.03	1-1.05	0.02
Prior bleeding	1.05	1.02-1.07	<0.0001
Prior ICD	1.16	1.14-1.18	<0.0001
Prior ischemic stroke	1.16	1.15-1.18	<0.0001
Prior Pacemaker	1.06	1.04-1.07	<0.0001
Prior revascularization	1.84	1.77-1.91	<0.0001
Sleep apnea	0.94	0.93-0.95	<0.0001
Prior smoking	0.95	0.94-0.95	<0.0001
Preexisting atrial fibrillation	0.99	0.98-0.99	0.0008
Cardiogenic shock	1.28	1.26-1.3	<0.0001
Drug eluting stent	Reference	Reference	
Bare metal stent	1.12	1.11-1.13	<0.0001
Number of vessels (reference= 1 vessel)			
2 Vessels	1.10	1.09-1.11	<0.0001
3 Vessels	1.16	1.14-1.18	<0.0001
≥4 Vessels	1.17	1.12-1.23	<0.0001
Number of stents (reference= 1 stent)			
2 Stents	1.01	1-1.01	0.2
3 Stents	1.06	1.05-1.07	<0.0001
≥4 Stents	1.11	1.09-1.13	<0.0001

Chronic total occlusion	1.21	1.2-1.23	<0.0001
Bifurcation	0.96	0.94-0.98	<0.0001
Prior coronary artery disease	0.79	0.76-0.82	<0.0001
Stable CAD	Reference	Reference	
Unstable angina	1.15	1.14-1.16	<0.0001
Non-ST elevation MI	2.01	2-2.03	<0.0001
Inferior ST-elevation MI	1.78	1.77-1.8	<0.0001
Anterior ST-elevation MI	1.78	1.76-1.8	<0.0001

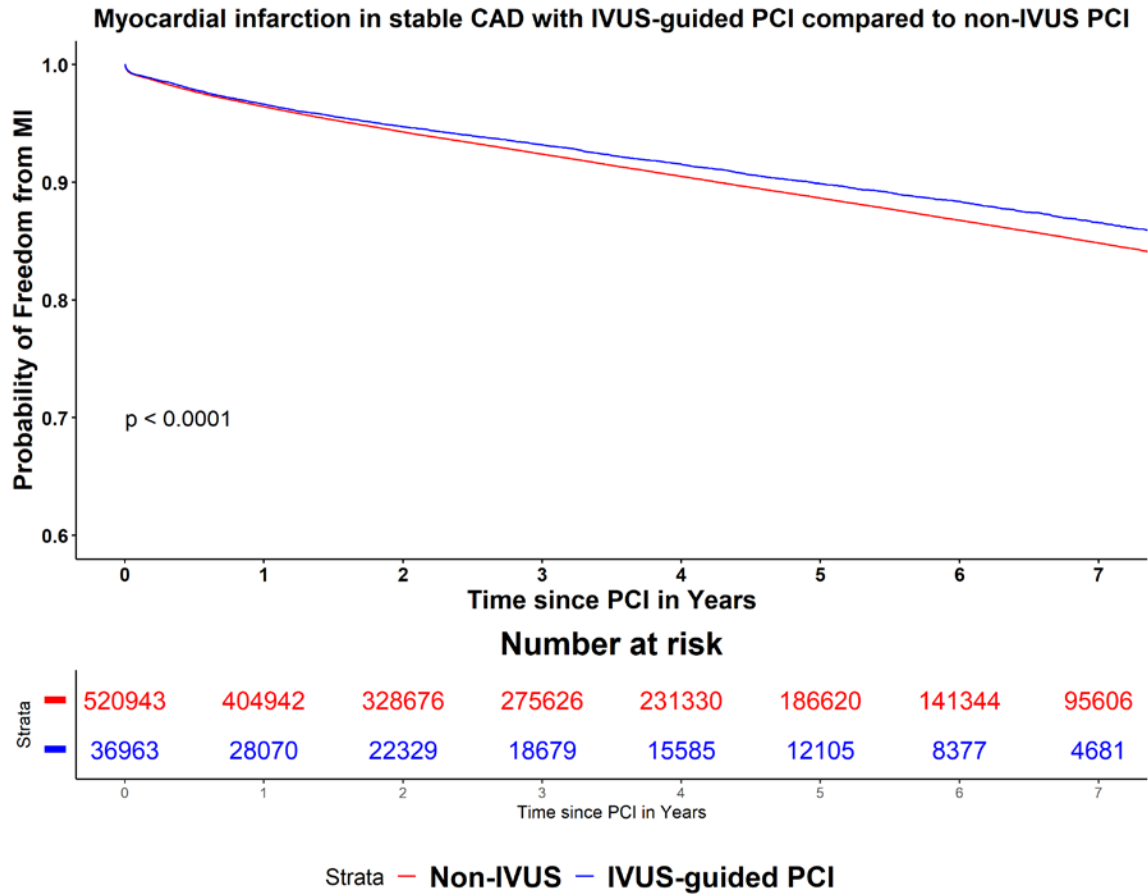
Supplemental Table 6: Full model for the outcome of repeat revascularization

Variable	Hazards ratio	95% CI	P Value
Intravascular ultrasound	0.893	0.887-0.898	<0.0001
Age	0.982	0.981-0.983	<0.0001
Black race	1.06	1.05-1.07	<0.0001
Other races	1.07	1.06-1.08	<0.0001
Female sex	0.97	0.96-0.98	<0.0001
AIDS	0.84	0.77-0.92	0.0001
Alcohol abuse	0.80	0.77-0.83	<0.0001
Anemia	1.08	1.07-1.09	<0.0001
Congestive heart failure	1.07	1.06-1.08	<0.0001
Chronic lung disease	1.07	1.06-1.08	<0.0001
Coagulopathy	0.91	0.89-0.93	<0.0001
Depression	0.97	0.96-0.98	<0.0001
Diabetes mellitus	1.31	1.3-1.32	<0.0001
Hypertension	1.07	1.06-1.08	<0.0001
Lymphoma	1.08	1.04-1.13	0.0002
Electrolytes abnormality	0.98	0.97-0.99	<0.0001
Obesity	0.92	0.91-0.93	<0.0001
Peripheral arterial disease	1.14	1.13-1.15	<0.0001
Psychosis	0.93	0.91-0.95	<0.0001
Pulmonary hypertension	0.92	0.91-0.94	<0.0001
Renal disease	1.28	1.27-1.29	<0.0001
Underweight	0.90	0.87-0.92	<0.0001
Prior bleeding	0.87	0.85-0.89	<0.0001
Prior cerebral hemorrhage	0.76	0.66-0.88	0.0003
Prior ICD	1.07	1.04-1.09	<0.0001
Prior ischemic stroke	1.02	1.01-1.04	0.003
Prior Pacemaker	1.05	1.03-1.07	<0.0001
Prior revascularization	1.23	1.19-1.28	<0.0001
Sleep apnea	0.97	0.96-0.99	<0.0001
Prior smoking	0.94	0.93-0.95	<0.0001
Preexisting atrial fibrillation	0.88	0.87-0.88	<0.0001
Cardiac arrest	0.82	0.8-0.83	<0.0001
Cardiogenic shock	0.91	0.89-0.93	<0.0001
Drug eluting stent	Reference	reference	
Bare metal stent	1.09	1.08-1.1	<0.0001
Number of vessels (reference= 1 vessel)			
2 Vessels	1.02	1.01-1.03	<0.0001
3 Vessels	1.03	1-1.05	0.02
≥4 Vessels	1.05	1-1.1	0.05
Number of stents (reference= 1 stent)			
2 Stents	1.18	1.17-1.19	<0.0001
3 Stents	1.34	1.33-1.36	<0.0001
≥4 Stents	1.35	1.33-1.38	<0.0001

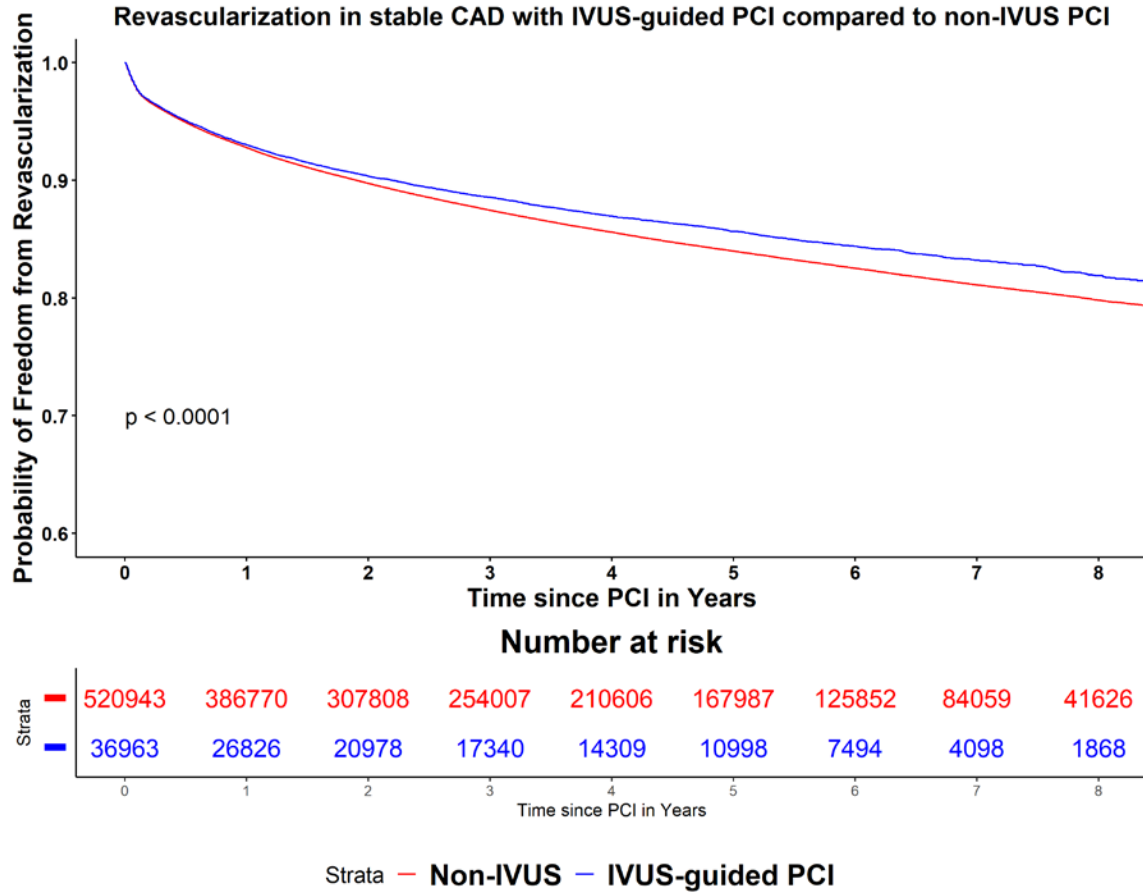
Chronic total occlusion	1.15	1.14-1.16	<0.0001
Bifurcation	0.88	0.86-0.9	<0.0001
Prior coronary artery disease	1.09	1.05-1.13	<0.0001
Stable CAD	Reference	Reference	
Unstable angina	1.18	1.17-1.19	<0.0001
Non-ST elevation MI	1.02	1.02-1.03	<0.0001
Inferior ST-elevation MI	0.89	0.88-0.9	<0.0001
Anterior ST-elevation MI	0.83	0.82-0.84	<0.0001



Supplemental Figure A: Kaplan Meier curves for all-cause mortality between PCI with and without intravascular ultrasound in patients presenting with stable coronary artery disease.



Supplemental Figure B: Kaplan Meier curves for myocardial infarction between PCI with and without intravascular ultrasound in patients presenting with stable coronary artery disease.



Supplemental Figure C: Kaplan Meier curves for revascularization between PCI with and without intravascular ultrasound in patients presenting with stable coronary artery disease.