

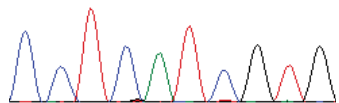
A

001, male type I sialidosis

WT GGGCCGCC^{*}T^{*}CATC^{*}G^{*}TGTGTGGCPatient GGGCCGCC^{*}C^{*}CATC^{*}A^{*}TGTGTGGC

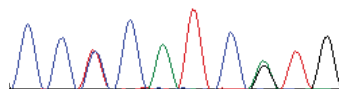
C C T C A T C G T G
 0 0 A 0 T A 0 J A J

WT



C C N C A T C N T G
 0 0 A 0 T A 0 A A J

Patient



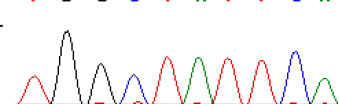
B

002, male type II sialidosis

WT CCCAGTGGCT^{*}A^{*}TTTCATCCCTGPatient CCCAGTGGCT^{*}G^{*}TTTCATCCCTG

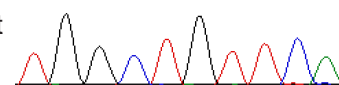
T G G C T A T T T C A
 T G G C T A T T T C A

WT



T G G C T G T T T C A
 T G G C T A T T T C A

Patient



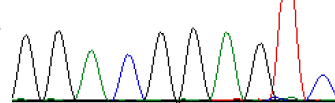
C

003, female type I sialidosis

WT GGAGCGGG^{*}G^{*}CGGAGTCTTCTGTPatient GGAGCGGG^{*}A^{*}CGGAGTCTTCTGT

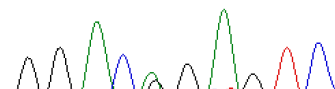
G G A C G G A G T C
 J J T 0 J J T J A 0

WT



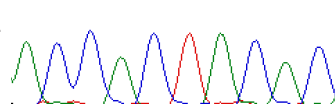
G G A C A G A G T C
 G G A C A G A G T C

Patient

WT GGAACCACTAC^{*}A^{*}CAGAGAGCATPatient GGAACCACTAC^{*}C^{*}NCTACAGNN

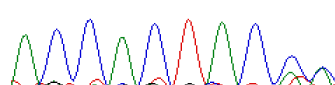
A C C A C T A C A C
 A C C A C T A C A C

WT



A C C A C T A C A C
 A C C A C T A C A C

Patient



D

	Reading B	Reading A	B/A
negative	657	10356	0.063441
positive	328507	4207	78.08581
female control iPS #1 p39	720	2157	0.333797
male control iPS #1 p18	885	2921	0.302978
001 #8 p5	763	2333	0.327047
002 #10 p5	765	2438	0.313782
003 #7 p5	698	2126	0.328316