

**A novel immunochromatographic strips assay for rapid and simple detection of systemic
lupus erythematosus**

Yuhan Sun^{1,†}, Zhi Li^{2,†}, Wei Liang¹, Yanlong Zhang³, Wanli Song¹, Jiazhe Song¹, Kai Xue¹,
Meiling Wang², Wenying Sun², Jianguo Gu⁴, Ming Li^{1,*}, and Wenzhe Li^{1,*}

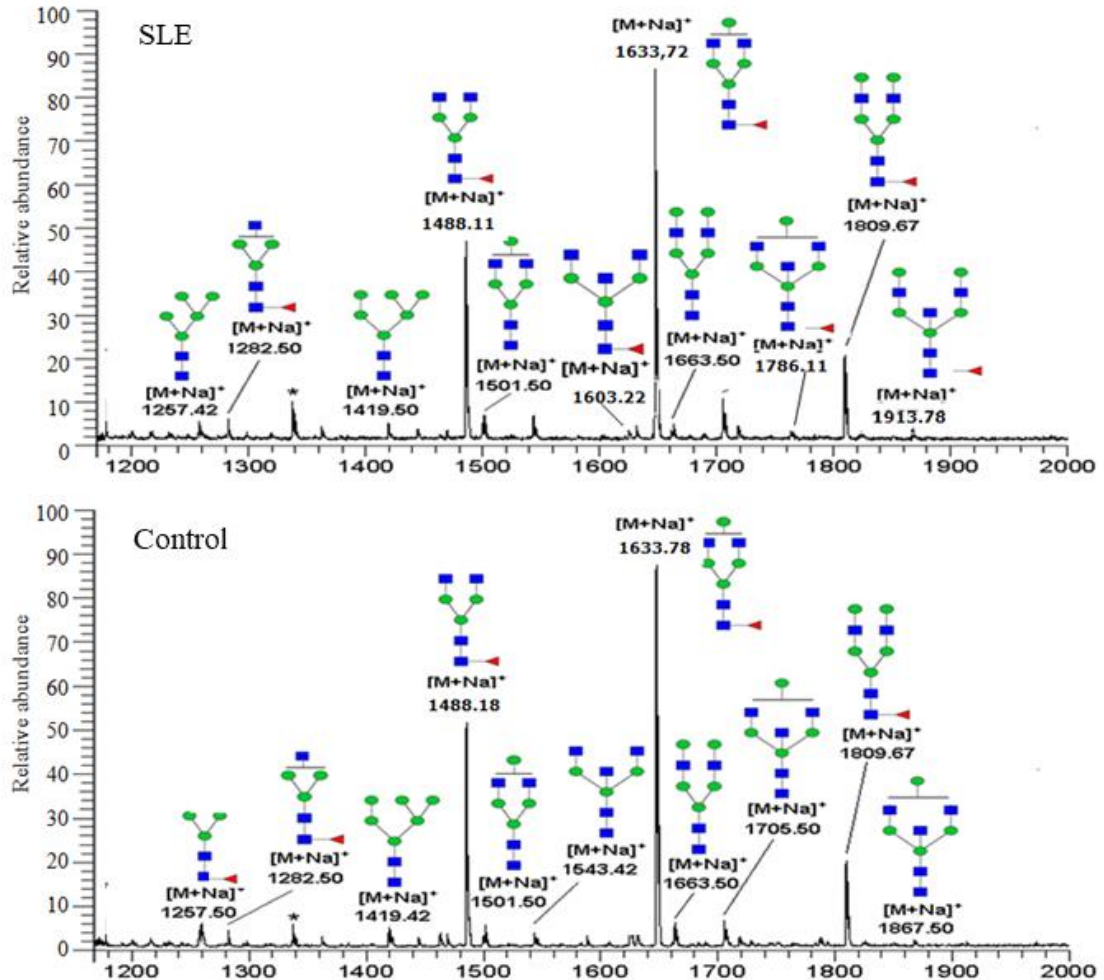
¹College of Basic Medical Science, Dalian Medical University, 9-Western Section, Lvshun South Road, Dalian, Liaoning 116044, China; ² Clinical Laboratory, Dalian Municipal Central Hospital, 826-Xinan Road, Shahekou District, Dalian, Liaoning 116033, China; ³ Department of Wildlife Medicine, College of Wildlife Resources, Northeast Forestry University, 26-Hexing Road, Harbin, Heilongjiang 150040,China; ⁴ Institute of Molecular Biomembrane and Glycobiology, Tohoku Medical and Pharmaceutical University, Sendai, Miyagi 981-8558, Japan

* To whom correspondence should be addressed. Tel: +86-411-86118660; Fax: +86-411-86110282; E-mail:vivianmarat@163.com, liwenzhe@dmu.edu.cn

† These authors contributed equally to the work.

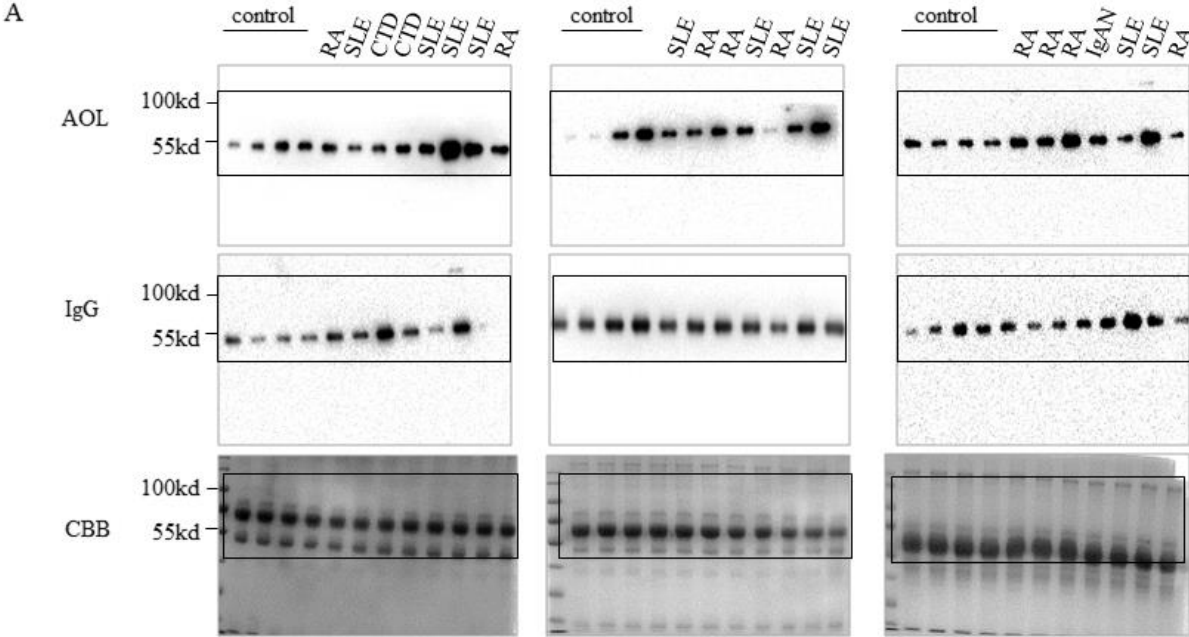
- 1. Supplementary Figure 1: ESI-MS spectrometry of N-glycan structure on the IgG**
- 2. Supplementary Figure 2: The full-length blots of Figure 2.**
- 3. Supplementary Figure 3: The full-length blots of Figure 3.**
- 4. Supplementary Figure 4: The full-length gel and blots of Figure 4.**
- 5. Supplementary Figure 5: The full-length gel and blots of Figure 5.**
- 6. Supplementary Table 1: Clinical characteristics of patients with autoimmune disease.**
- 7. Supplementary Table 2: Clinical characteristics of patients with SLE**

Supplementary Figure 1



Supplementary Figure 1. ESI-MS spectrometry of N-glycan structure on the IgG in the sera of SLE patients and healthy controls. The serum samples (n =3) were mixed and the N-glycan samples were injected via a Rheodyne loop with a colume of 2 μ l and subsequently brought into the electrospray ion source by a stream of 50% methanol (v/v) at a flow rate of 200 μ l/min. Triangle, fucose; Square, N-acetylglucosamine; circle, mannose.

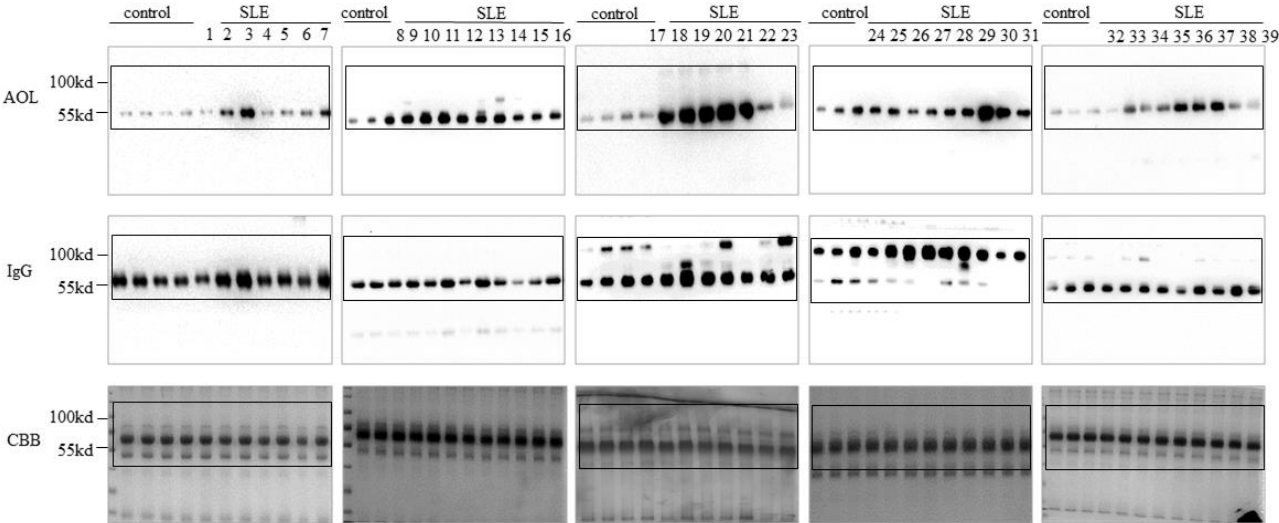
Supplementary Figure 2



Supplementary Figure 2: The full-length gel and blots of Figure 2. (A) The full-length blots of Figure 2A in this manuscript. Boxed regions were cropped and shown as the figure.

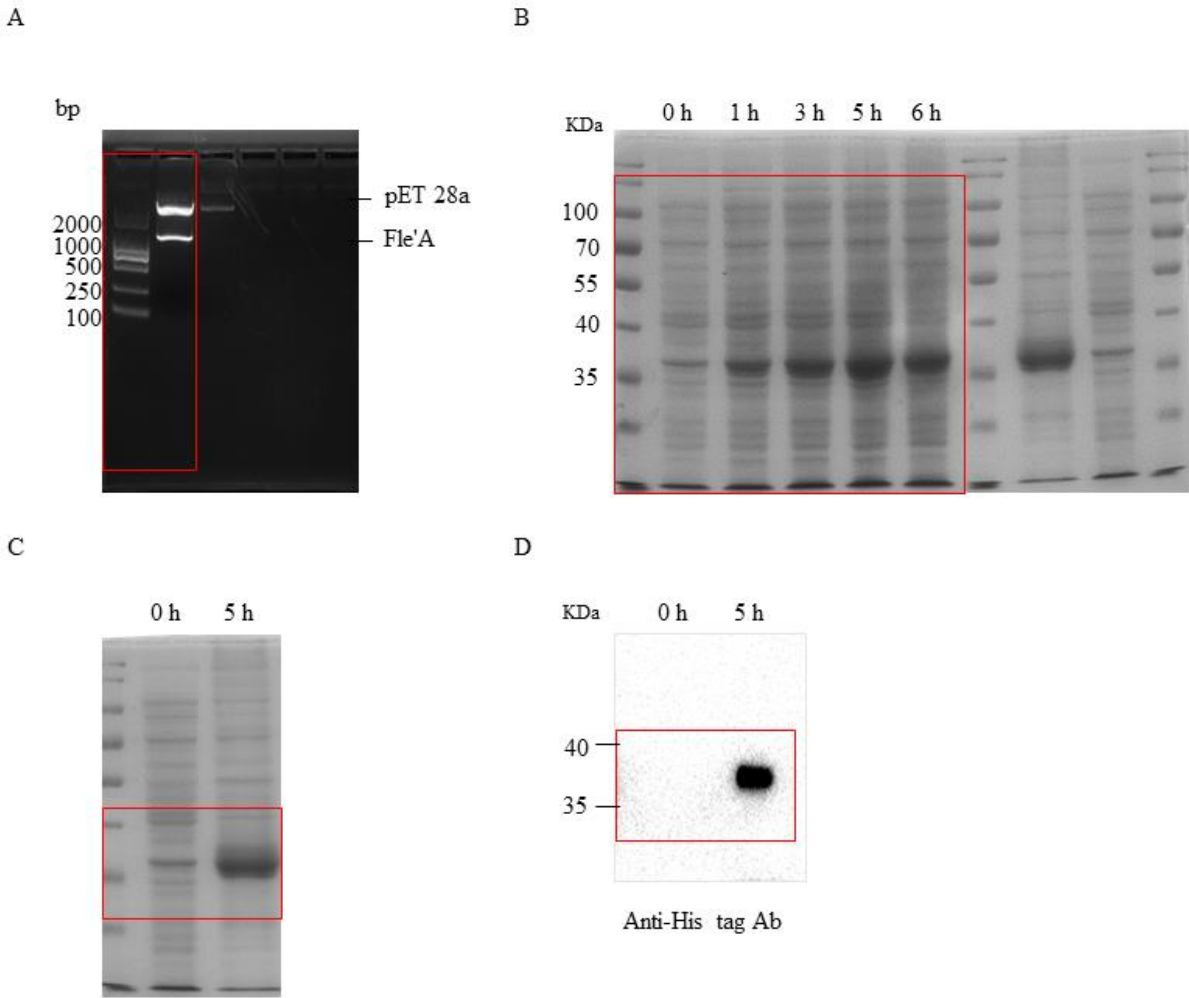
Supplementary Figure 3

A



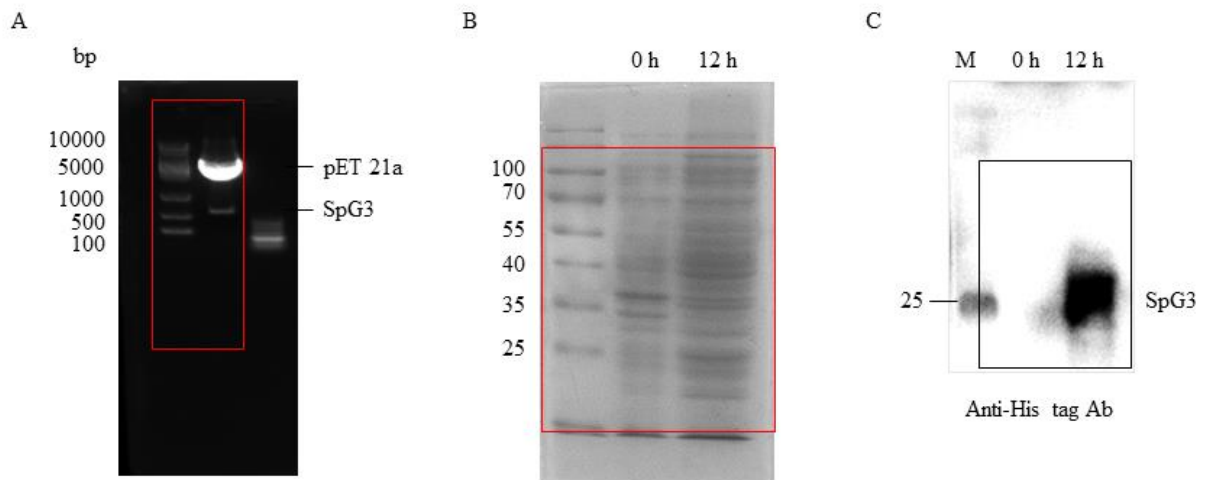
Supplementary Figure 3: The full-length gel and blots of Figure 3. (A) The full-length blots of Figure 3A in this manuscript. Boxed regions were cropped and shown as the figure.

Supplementary Figure 4



Supplementary Figure 4: The full-length gel and blots of Figure 4. A) a full-length gel of Figure 4 in this manuscript; B-D) a full-length blots of Figure 4C-E in this manuscript. Boxed regions were cropped and shown as the figure.

Supplementary Figure 5



Supplementary Figure 5: The full-length gel and blots of Figure 5. A) a full-length gel of Figure 5B in this manuscript; B,C) a full-length blots of Figure 5C,D in this manuscript.

Boxed regions were cropped and shown as the figure.

Supplementary Table 1. Clinical characteristics of patients with autoimmune disease

Patients	Age/Sex/Ethnicity	ANA titer	Disease
1	62/F/Asian	1:100	RA
2	58/F/Asian	1:320	SLE
3	71/F/Asian	—	CTD
4	55/F/Asian	—	CTD
5	68/F/Asian	1:320-1000	SLE
6	35/M/Asian	1:320	SLE
7	65/F/Asian	1:100-320	SLE
8	47/F/Asian	1:100	RA
9	37/F/Asian	1:320	SLE
10	28/F/Asian	1:100	RA
11	66/F/Asian	1:100	RA
12	67/F/Asian	1:1000	SLE
13	28/F/Asian	1:3200	RA
14	61/F/Asian	1:320-1000	SLE
15	71/F/Asian	1:1000	SLE
16	61/M/Asian	1:320	RA
17	67/F/Asian	1:100	RA
18	66/F/Asian	1:320	RA
19	53/F/Asian	1:1000	IgAN
20	29/F/Asian	1:100	SLE
21	37/M/Asian	1:320	SLE
22	59/F/Asian	1:100	RA

Systemic lupus erythematosus, SLE; Rheumatoid arthritis, RA; Connective tissue disease, CTD; IgA nephropathy, IgAN.

Supplementary Table 2. Clinical characteristics of patients with SLE

Patients	Age/Sex/Ethnicity	Fulfilled 1982		
		ACR criteria	ANA titer	Disease
1	58/F/Asian	3, 7, 9, 10, 11	1:320	SLE
2	68/F/Asian	1, 5, 7, 9, 10, 11	1:320-1000	SLE
3	35/M/Asian	1, 3, 4, 5, 9, 10, 11	1:320	SLE
4	65/F/Asian	7, 9, 10, 11	1:100-320	SLE
5	37/F/Asian	5, 6, 9, 11	1:320	SLE
6	67/M/Asian	3, 5, 6, 9, 10, 11	1:1000	SLE
7	61/F/Asian	1, 3, 4, 10, 11	1:320-1000	SLE
8	71/F/Asian	5, 6, 7, 9, 10, 11	1:1000	SLE
9	61/F/Asian	3, 7, 9, 10, 11	1:320	SLE
10	67/F/Asian	1, 4, 5, 11	1:100	SLE
11	66/F/Asian	1, 4, 7, 9, 10, 11	1:320	SLE
12	29/F/Asian	1, 9, 10, 11	1:100	SLE
13	37/M/Asian	7, 9, 10, 11	1:320	SLE
14	53/F/Asian	1, 3, 5, 7, 9, 10, 11	1:3200	SLE
15	53/F/Asian	1, 5, 6, 7, 9, 10, 11	1:3200	SLE
16	54/F/Asian	3, 4, 10, 11	1:320-1000	SLE
17	59/F/Asian	1, 6, 7, 9, 10, 11	1:1000	SLE
18	68/F/Asian	3, 4, 9, 10, 11	1:100-320	SLE
19	53/F/Asian	1, 7, 9, 10, 11	1:320-1000	SLE
20	68/F/Asian	1, 4, 10, 11	1:100	SLE
21	60/F/Asian	1, 5, 7, 9, 10, 11	1:3200	SLE
22	18/F/Asian	3, 5, 10, 11	1:320	SLE
23	37/M/Asian	3, 5, 6, 9, 10, 11	1:320-1000	SLE
24	21/F/Asian	1, 3, 10, 11	1:100	SLE
25	43/F/Asian	1, 3, 9, 10, 11	1:100	SLE
26	39/F/Asian	1, 5, 9, 10, 11	1:1000	SLE
27	54/F/Asian	5, 7, 9, 10, 11	1:320	SLE
28	20/F/Asian	3, 7, 9, 10, 11	1:320	SLE
29	39/F/Asian	1, 5, 6, 7, 9, 10, 11	1:3200	SLE
30	23/F/Asian	1, 3, 4, 10, 11	1:100-320	SLE
31	59/F/Asian	1, 5, 6, 9, 10, 11	1:1000	SLE
32	46/F/Asian	1, 3, 5, 7, 9, 10, 11	1:3200	SLE
33	36/F/Asian	3, 5, 6, 9, 10, 11	1:1000	SLE
34	52/M/Asian	1, 7, 9, 10, 11	1:1000	SLE
35	52/F/Asian	7, 9, 10, 11	1:1000	SLE
36	52/F/Asian	1, 7, 9, 10, 11	1:320-1000	SLE
37	29/F/Asian	3, 4, 9, 10, 11	1:320	SLE
38	30/F/Asian	5, 6, 9, 11	1:100	SLE
39	50/F/Asian	1, 6, 9, 10, 11	1:320	SLE

1. Lupus malar rash; 2. Classic discoid rash; 3. Photosensitive; 4. Oral ulcers; 5. Synovitis; 6. Serositis; 7. Renal; 8. Neurologic; 9. Hemolytic anemia; 10. Immunologic; 11. ANA level above laboratory reference.