

Supplemental Figures Zeeuw van der Laan et al.

Supplementary Figure 1. Confirmation of antibody-deglycosylation. SDS-PAGE (panel A) and mass spectrometry analysis (panel B) of deglycosylated 34-1-2S and SF1.1.10. Untreated antibodies are used as controls.

Supplementary Figure 2. Confirmation of Fab-fragment generation. Non-reducing SDS-PAGE demonstrating Fab fragment sizes of 34-1-2S and SF1.1.10. Full-length (untreated) antibodies are used as controls.

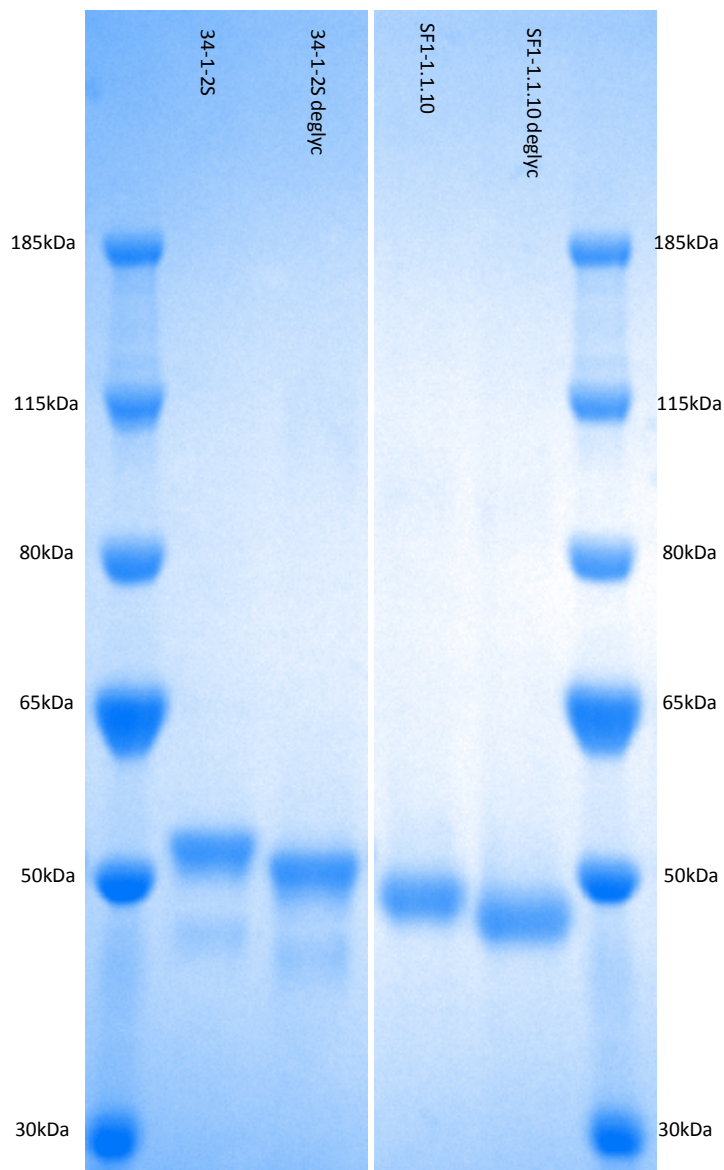
Supplementary Figure 3. Deglycosylated antibody-binding to murine FcγRs. Binding of deglycosylated 34-1-2S, SF1.1.10 and AF6-88.5.5.3 to murine FcγRI, FcγRIIb, FcγRIII, and FcγRIV as investigated using SPR. Dashed lines indicate binding of untreated antibodies (from Figure 4).

Supplementary Figure 4. Antibody-Fab fragmentation binding to murine FcγRs. Fab-fragment binding of 34-1-2S, SF1.1.10 and AF6-88.5.5.3 to murine FcγRI, FcγRIIb, FcγRIII, and FcγRIV as investigated using SPR.

Supplementary Figure 5. Mass spectrometry readout example of antibody glycopeptide structure.

Supp. Fig. 1

A

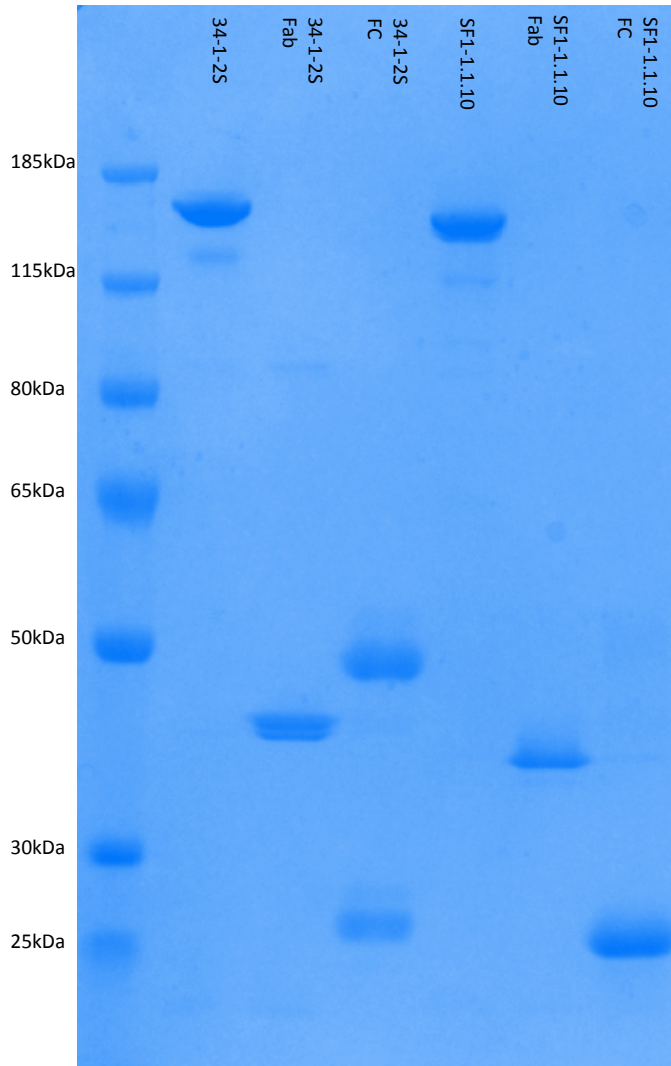


B

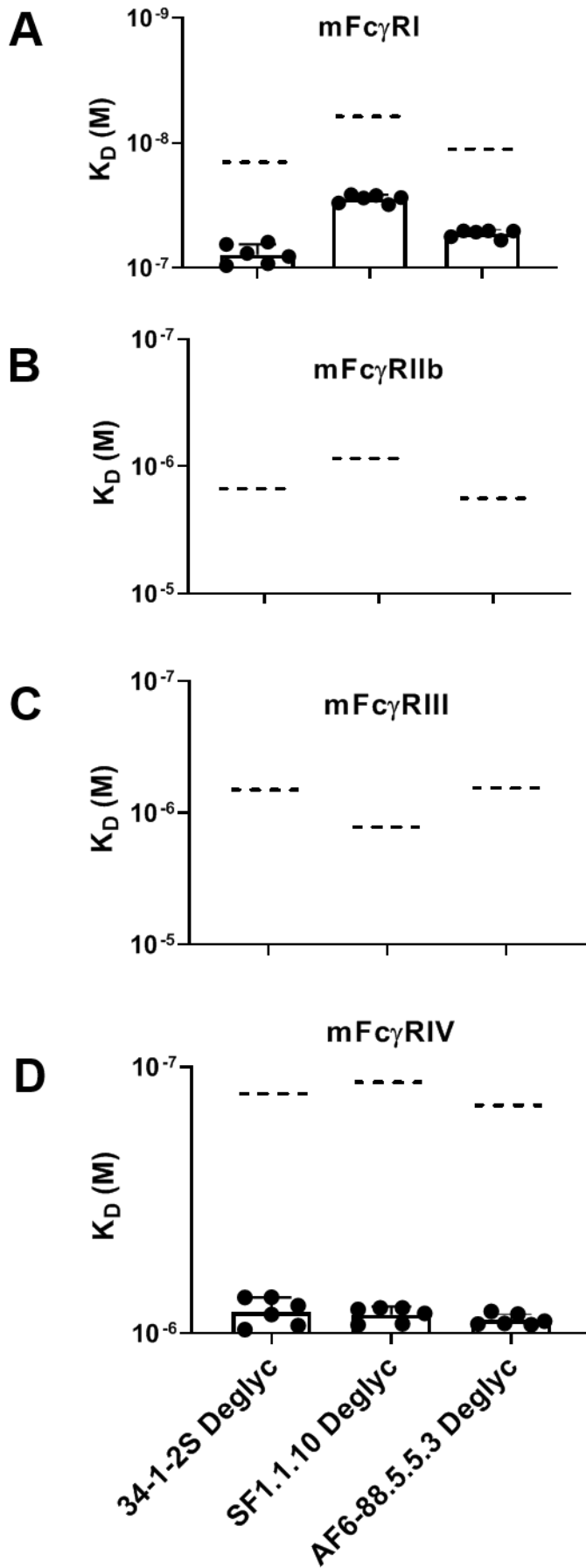
Fc-deglycosylation (%)	34-1-2S	Deglycosylated 34-1-2S
DeGlyc - GlcNAc + Fuc	0.02	93.16

Fc-deglycosylation (%)	SF1.1.10	Deglycosylated SF1.1.10
DeGlyc - GlcNAc + Fuc	0.27	89.86

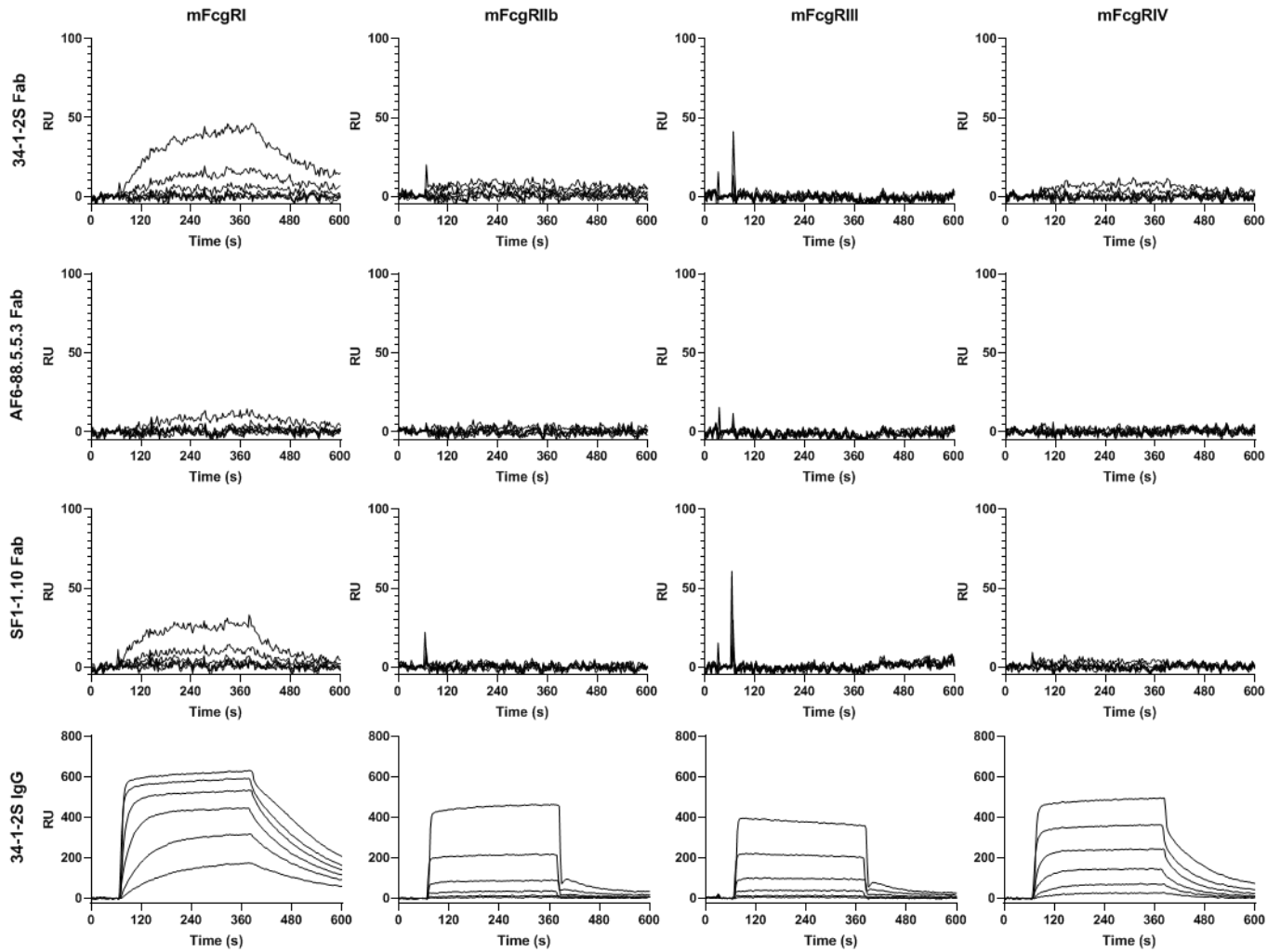
Supp. Fig. 2



Supp. Fig. 3



Supp. Fig. 4



Supp. Fig. 5

