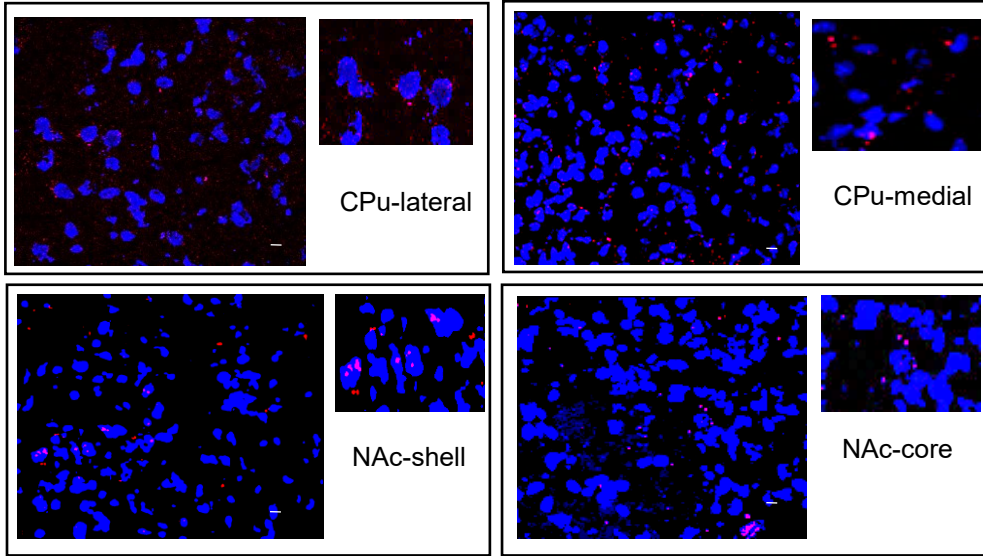
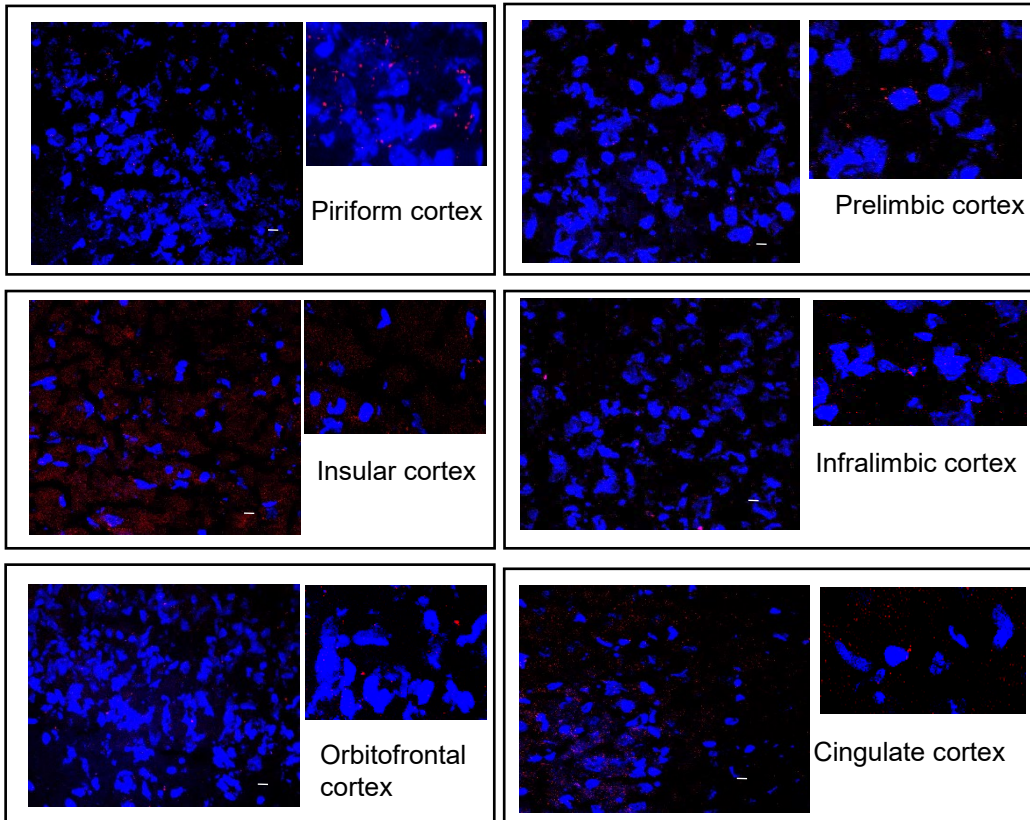


Supplementary Figure 1. Representative D1-D2 PLA images in the striatum and cortex

A. Striatum

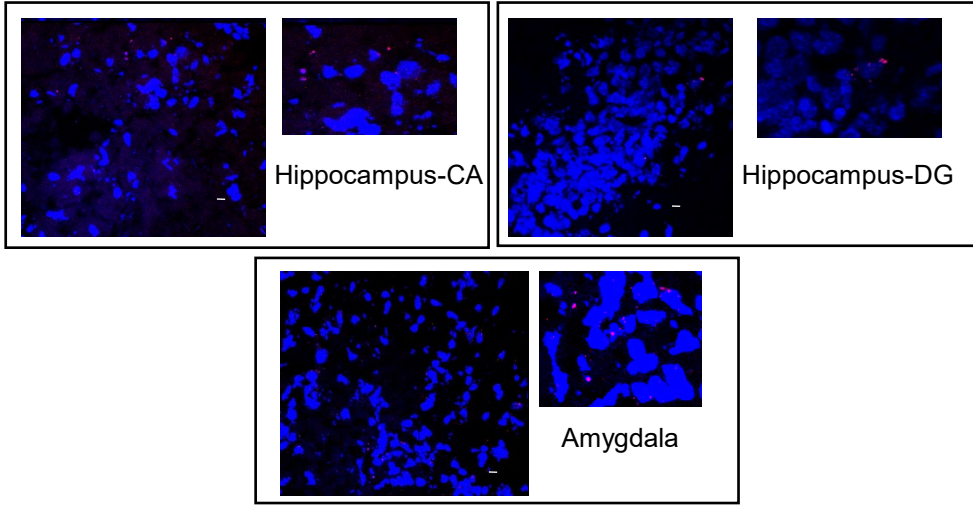


B. Cortex

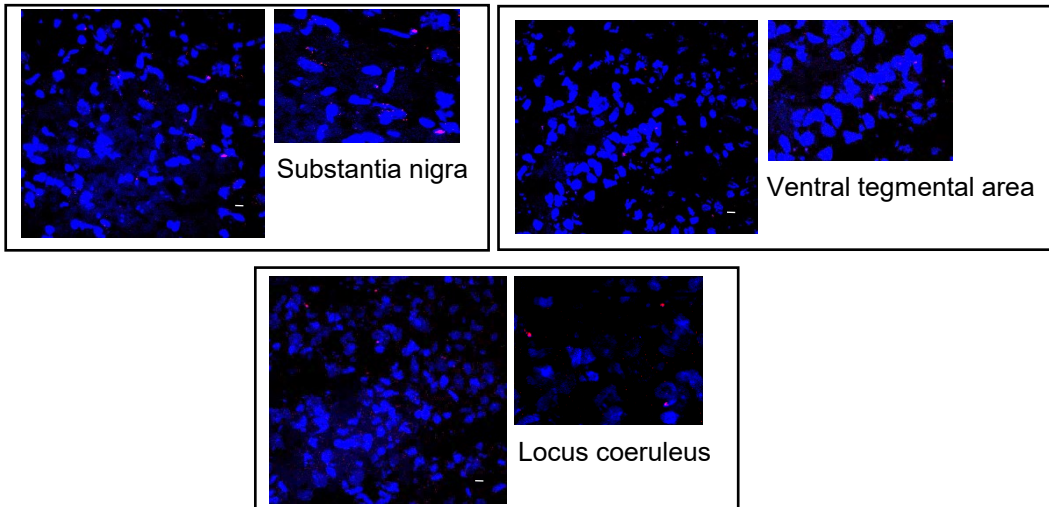


Supplementary Figure 2. Representative D1-D2 PLA images from different rat brain regions

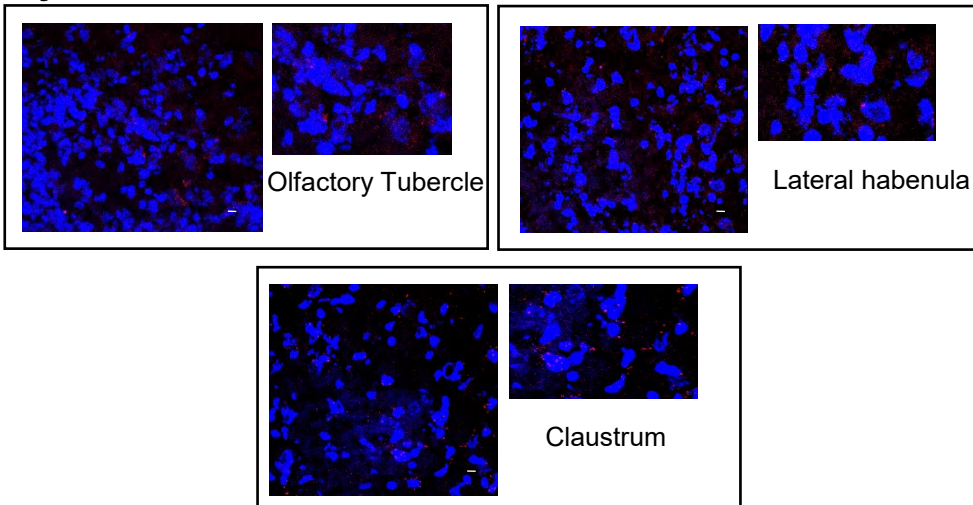
A. Hippocampus and Amygdala



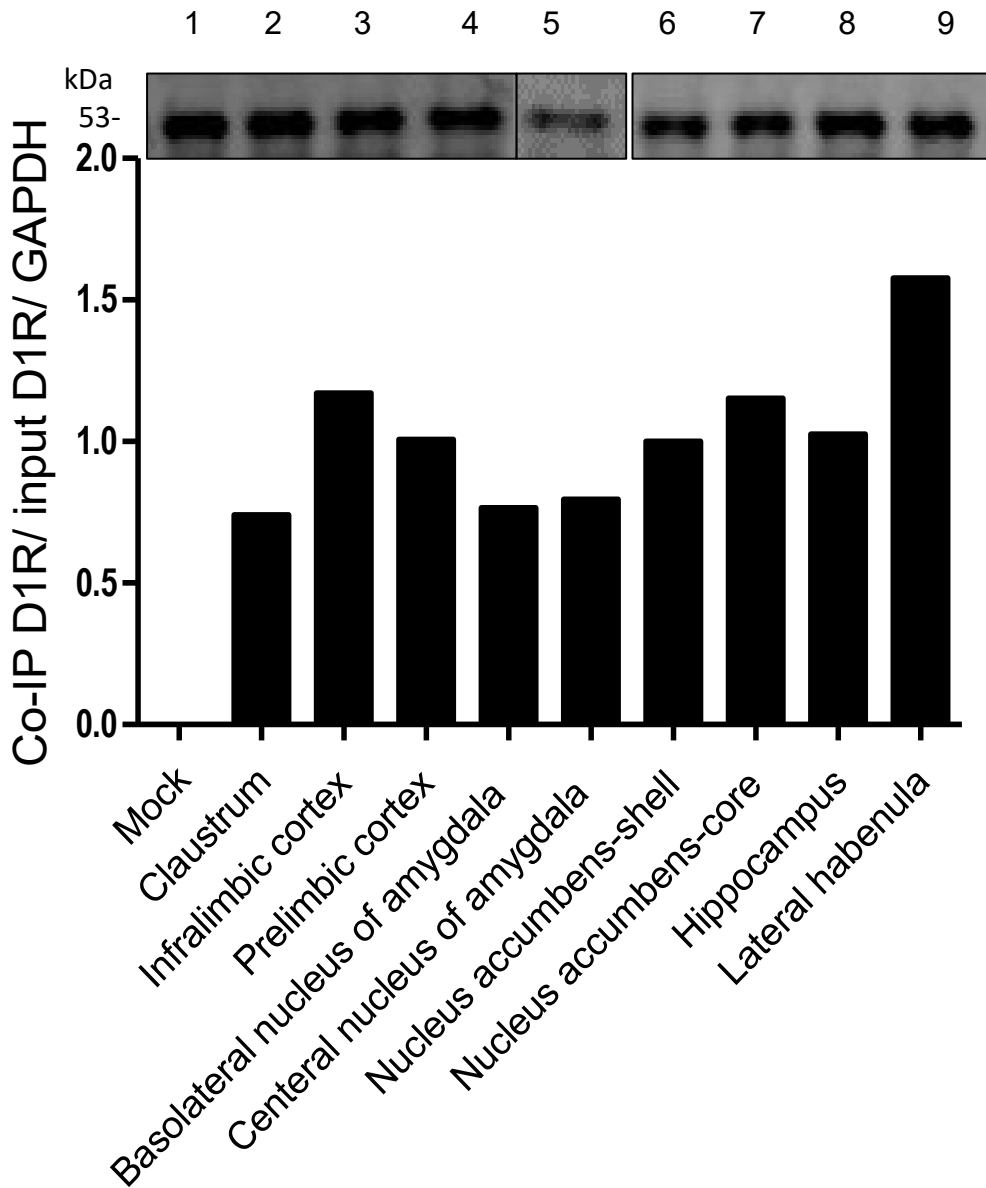
B. Substantia nigra, Ventral tegmental area and Locus coeruleus



C. Olfactory Tubercle, Lateral habenula and Claustrum

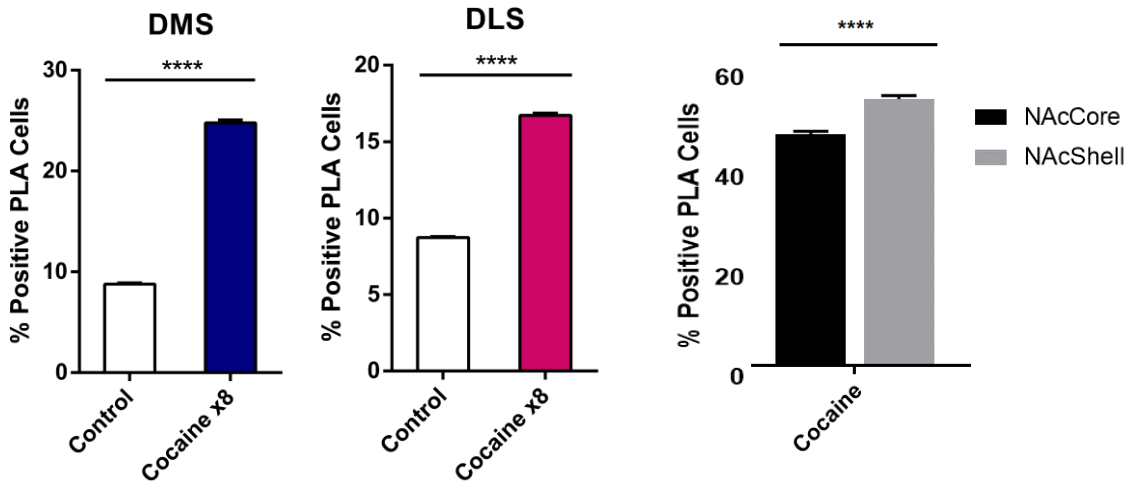


Supplementary Figure 3. Co-Immunoprecipitation of D1R by D2R from different brain regions of male rats

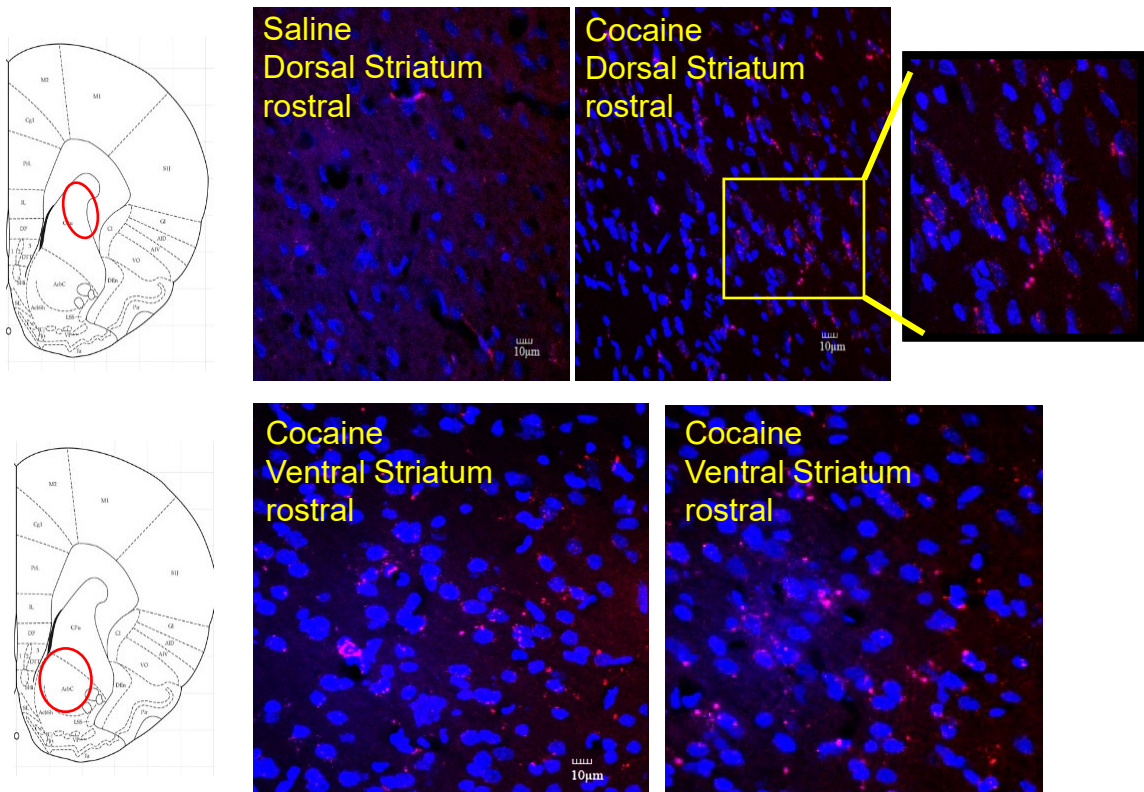


Supplementary Figure 4. Effect of cocaine treatment on D1-D2 heteromer

A. D1-D2 heteromer estimation by PLA in caudal striatum

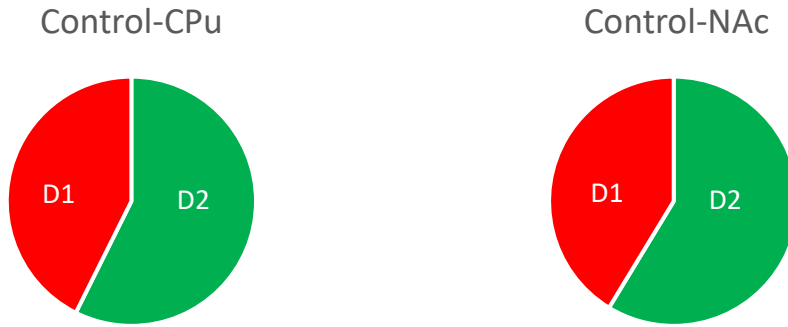


B. Rostro-caudal gradient of D1-D2 heteromer in the striatum

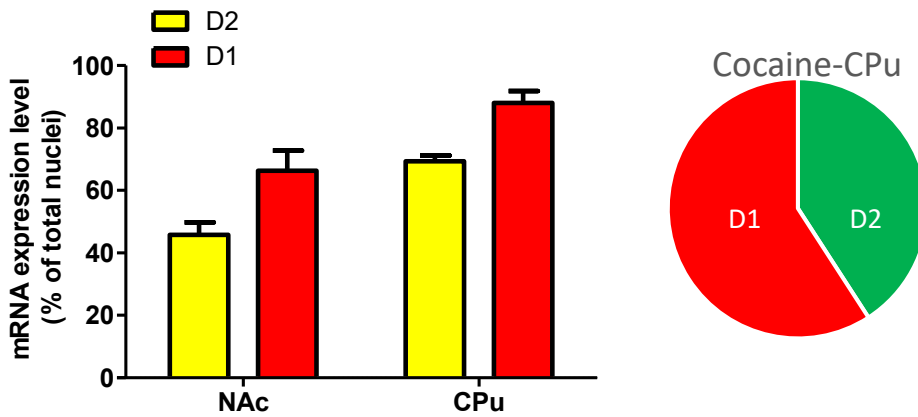


Supplementary Figure 5. FISH analysis of D1 and D2 mRNA expression

A. Relative distribution of D1 and D2 mRNA-positive cells in vehicle-treated rats



B. Relative distribution of D1 and D2 mRNA-positive cells in cocaine-treated rats



C. Changes in D1 and D2 mRNA expression in cocaine-treated rats

