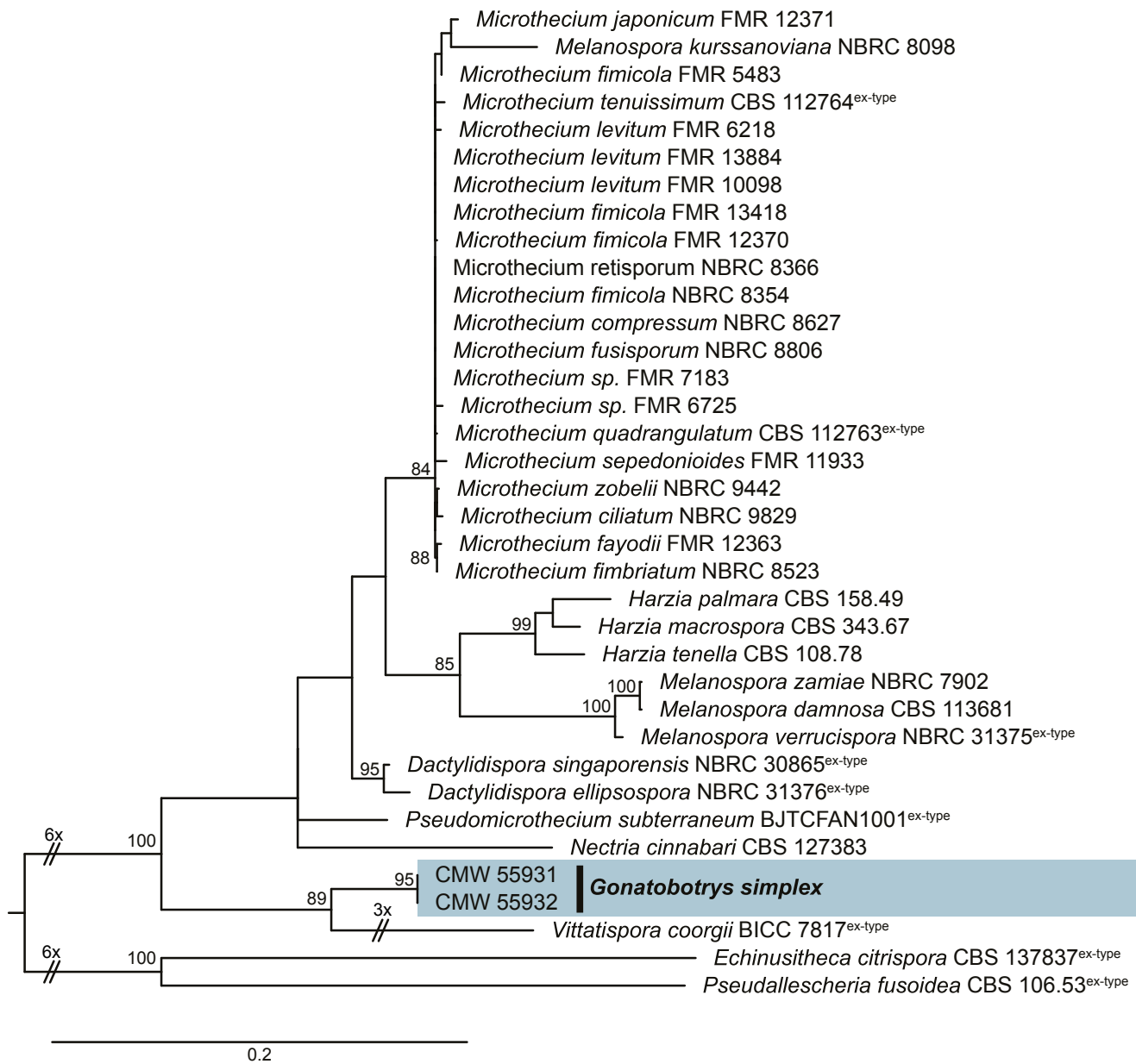


Figure S1



Supplementary Fig 1. Combined phylogeny based on LSU and ITS showing the placement of *Gonatobotrys simplex* in *Melanosporales* as a close relative of *Vittatispora*. Aligned data sets (MAFFT v. 7.450) were analysed using Maximum likelihood (IQ-TREE v. 1.6.12). Bootstrap support values ($\geq 80\%$) are given above branches. The tree was rooted to *Echinusithea citrispora* and *Pseudallescheria fusoidea*.