

## Uncropped Western blots for Figures

### Figure 2b: GATA-4 expression in WHO I, II, and III meningioma tissue lysates

Loading order:

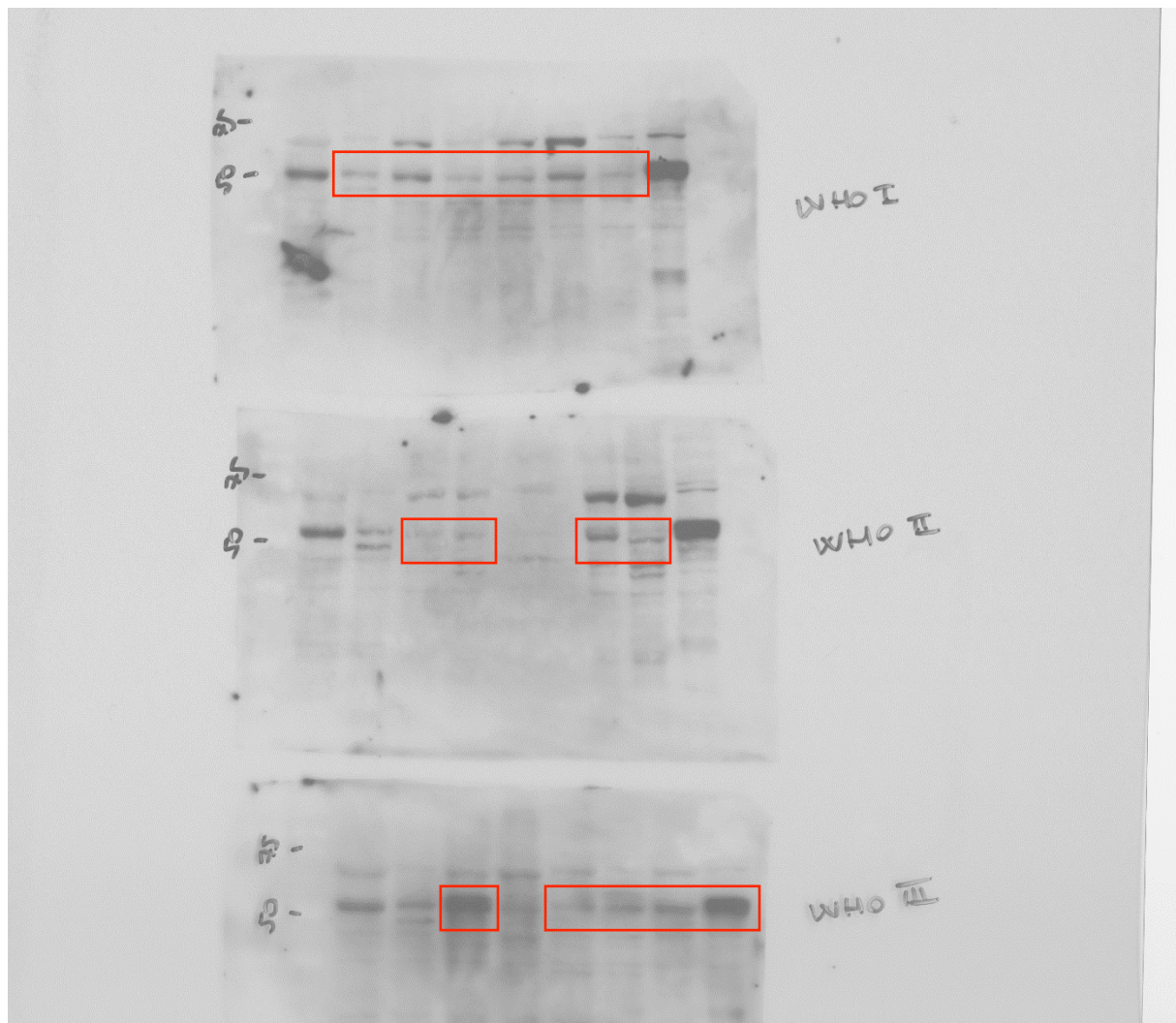
WHO I: NMT1, NMT2, J5, J8, MN005, J19, MN176, KT21-MG1

WHO II: NMT1, NMT2, J2, J4, MN001, J24, J25, KT21-MG1

WHO III: NMT1, NMT2, J10, J16, J17, J29, J30, KT21-MG1

**Ab: anti-GATA-4**

Red boxes show the lanes included in the Figures file



**Figure 2b: GATA-4 expression in WHO I, II, and III meningioma tissue lysates**

Loading order:

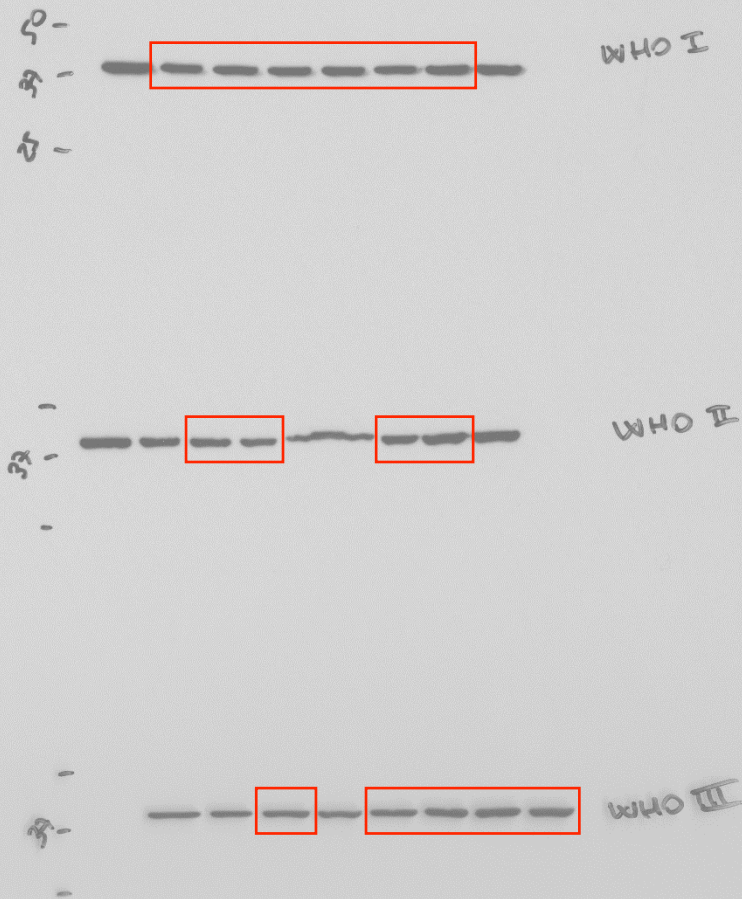
WHO I: NMT1, NMT2, J5, J8, MN005, J19, MN176, KT21-MG1

WHO II: NMT1, NMT2, J2, J4, MN001, J24, J25, KT21-MG1

WHO III: NMT1, NMT2, J10, J16, J17, J29, J30, KT21-MG1

**Ab: anti-GAPDH**

Red boxes show the lanes included in the Figures file



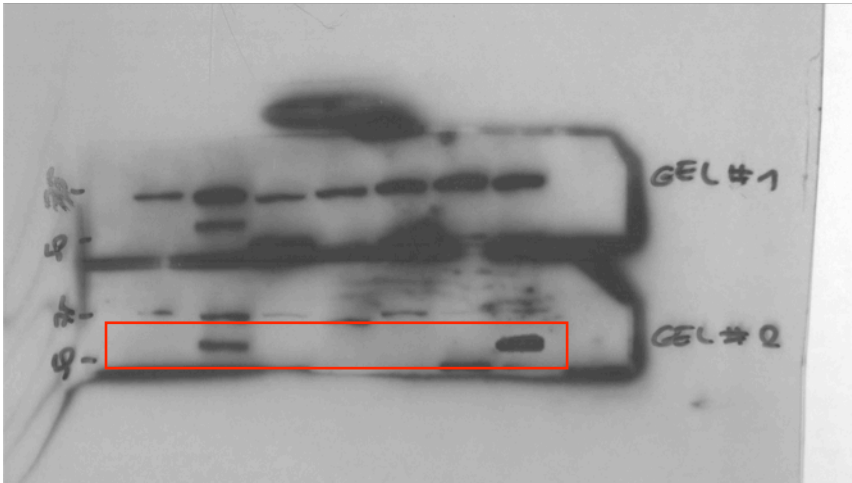
**Figure 2e: GATA-4 expression in HMC, KT21-MG1, and WHO I PDMN cells**

Loading order:

Gel #2: HMC, KT21-MG1, MN078, MN091, MN102, MN126, MN056

**Ab: anti-GATA-4**

Red boxes show the lanes included in the Figures file

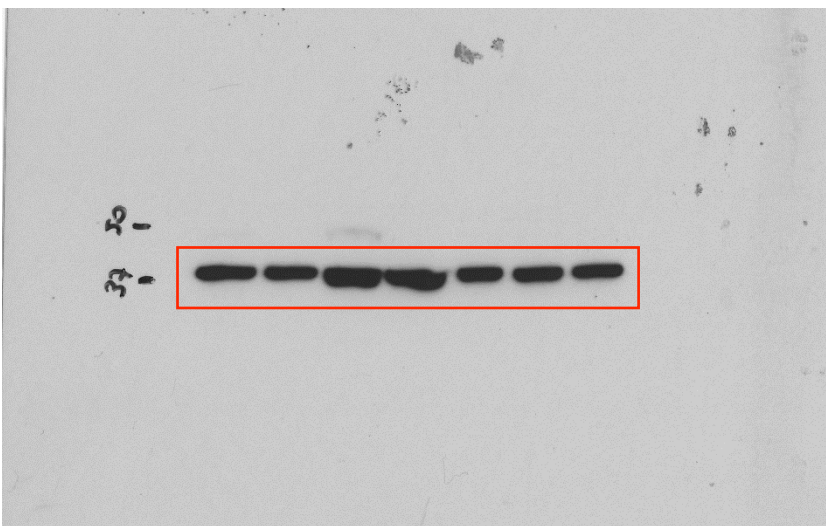


**Figure 2e: GATA-4 expression in HMC, KT21-MG1, and WHO I PDMN cells**

Loading order: HMC, KT21-MG1, MN078, MN091, MN102, MN126, MN056

**Ab: anti-GAPDH**

Red boxes show the lanes included in the Figures file

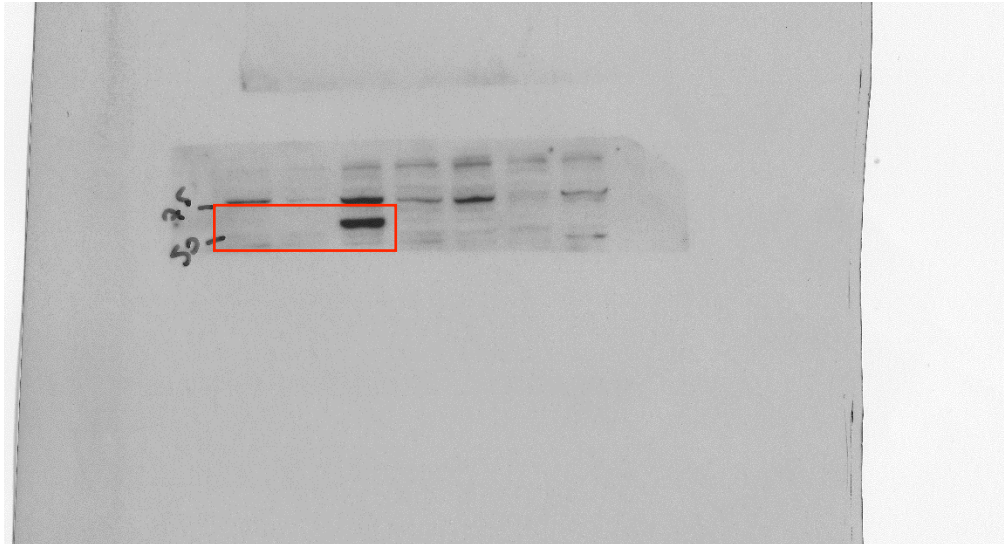


**Figure 2f: GATA-4 expression in HMC, Ben-Men-1, and KT21-MG1**

Loading order: HMC, Ben-Men-1, KT21-MG1, IOMM-Lee, HeLa, U87, U251

**Ab: anti-GATA-4**

Red boxes show the lanes included in the Figures file

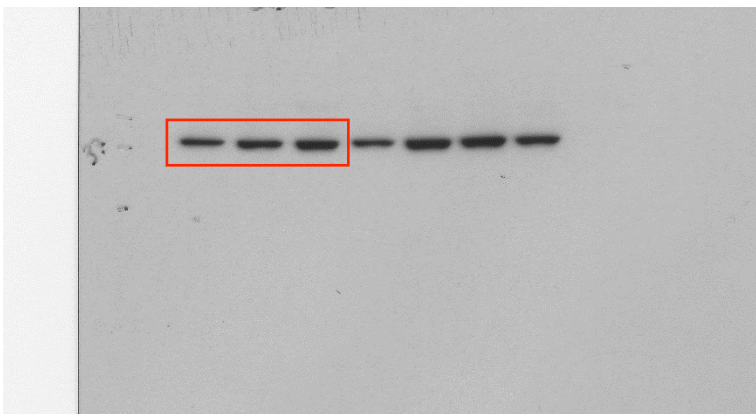


**Figure 2e: GATA-4 expression in HMC, Ben-Men-1, and KT21-MG1**

Loading order: HMC, Ben-Men-1, KT21-MG1, IOMM-Lee, HeLa, U87, U251

**Ab: anti-GAPDH**

Red boxes show the lanes included in the Figures file

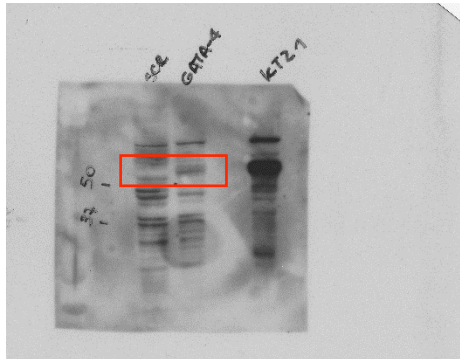


**Figure 3a: GATA-4 overexpression in Ben-Men-1**

Loading order: p-Lenti-GIII-*GFP*, p-Lenti-GIII-*GATA4*

**Ab: anti-GATA-4**

Red boxes show the lanes included in the Figures file

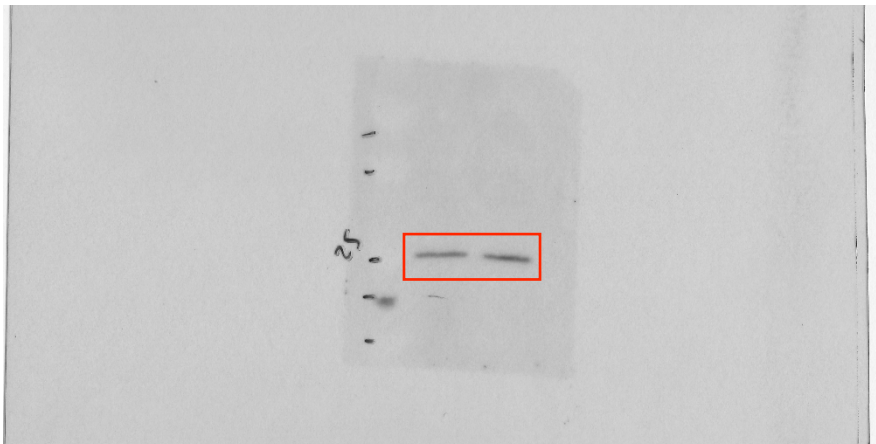


**Figure 3a: GATA-4 overexpression in Ben-Men-1**

Loading order: p-Lenti-GIII-*GFP*, p-Lenti-GIII-*GATA4*

**Ab: anti-Bcl2**

Red boxes show the lanes included in the Figures file

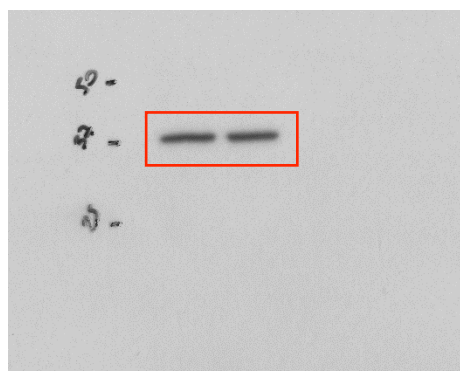


**Figure 3a: GATA-4 overexpression in Ben-Men-1**

Loading order: p-Lenti-GIII-*GFP*, p-Lenti-GIII-*GATA4*

**Ab: anti-GAPDH**

Red boxes show the lanes included in the Figures file

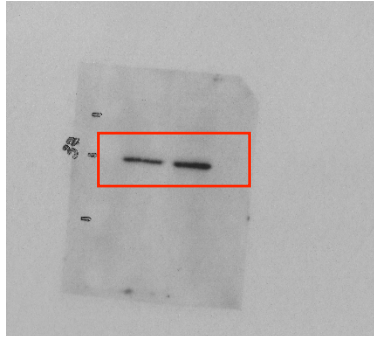


**Figure 3c: GATA-4 overexpression in Ben-Men-1**

Loading order: p-Lenti-GIII-*GFP*, p-Lenti-GIII-*GATA4*

**Ab: anti-Cyclin D1**

Red boxes show the lanes included in the Figures file

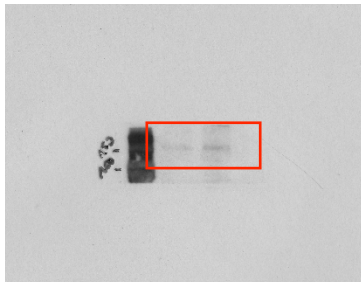


**Figure 3c: GATA-4 overexpression in Ben-Men-1**

Loading order: p-Lenti-GIII-*GFP*, p-Lenti-GIII-*GATA4*

**Ab: anti-pRb**

Red boxes show the lanes included in the Figures file

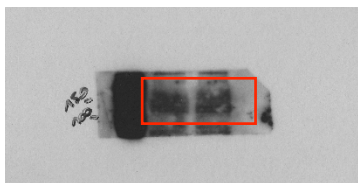


**Figure 3c: GATA-4 overexpression in Ben-Men-1**

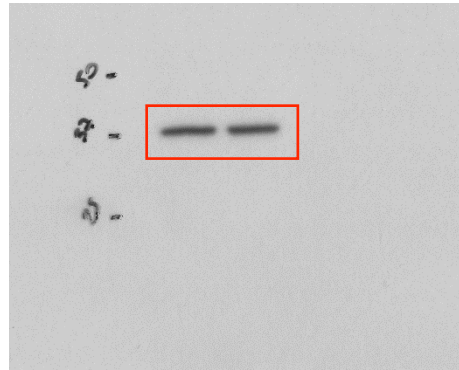
Loading order: p-Lenti-GIII-*GFP*, p-Lenti-GIII-*GATA4*

**Ab: anti-Rb**

Red boxes show the lanes included in the Figures file



**Figure 3a: GATA-4 overexpression in Ben-Men-1**  
Loading order: p-Lenti-GIII-*GFP*, p-Lenti-GIII-*GATA4*  
**Ab: anti-GAPDH**  
Red boxes show the lanes included in the Figures file

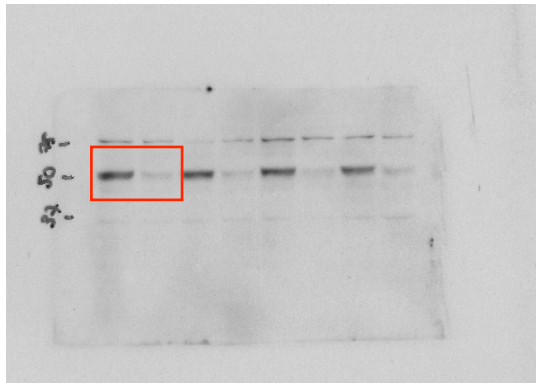


**Figure 4a: Lentiviral-mediated GATA-4 interference in KT21-MG1**

Loading order: scramble, shGATA4, scramble + vehicle, shGATA4 + vehicle, scramble + inhibitor 1, shGATA4 + inhibitor 1, scramble + inhibitor 2, shGATA4 + inhibitor 2

**Ab: anti-GATA**

Red boxes show the lanes included in the Figures file

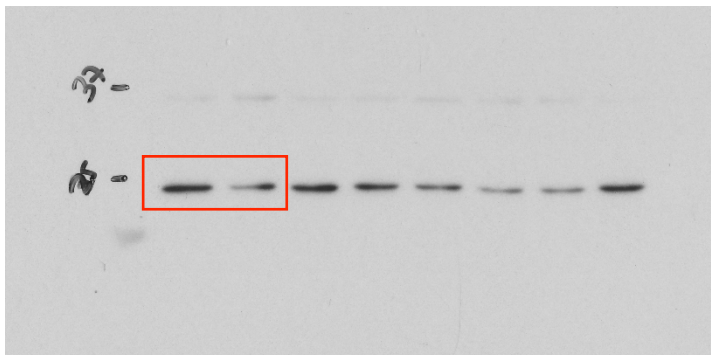


**Figure 4a: Lentiviral-mediated GATA-4 interference in KT21-MG1**

Loading order: scramble, shGATA4, , scramble + vehicle, shGATA4 + vehicle, scramble + inhibitor 1, shGATA4 + inhibitor 1, scramble + inhibitor 2, shGATA4 + inhibitor 2

**Ab: anti-Bcl2**

Red boxes show the lanes included in the Figures file

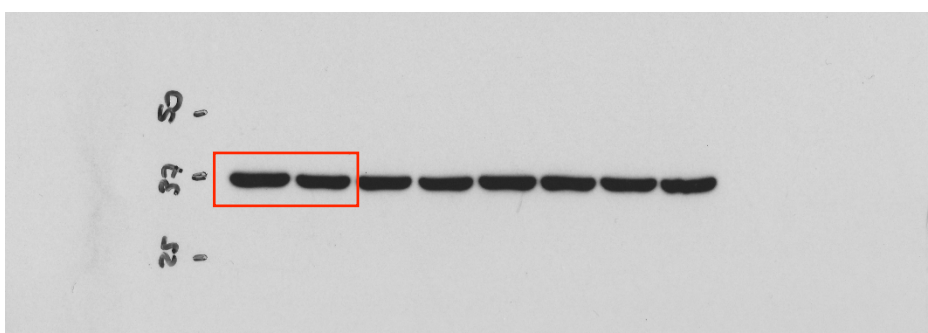


**Figure 4a: Lentiviral-mediated GATA-4 interference in KT21-MG1**

Loading order: scramble, shGATA4, scramble + vehicle, shGATA4 + vehicle, scramble + inhibitor 1, shGATA4 + inhibitor 1, scramble + inhibitor 2, shGATA4 + inhibitor 2

**Ab: anti-GAPDH**

Red boxes show the lanes included in the Figures file



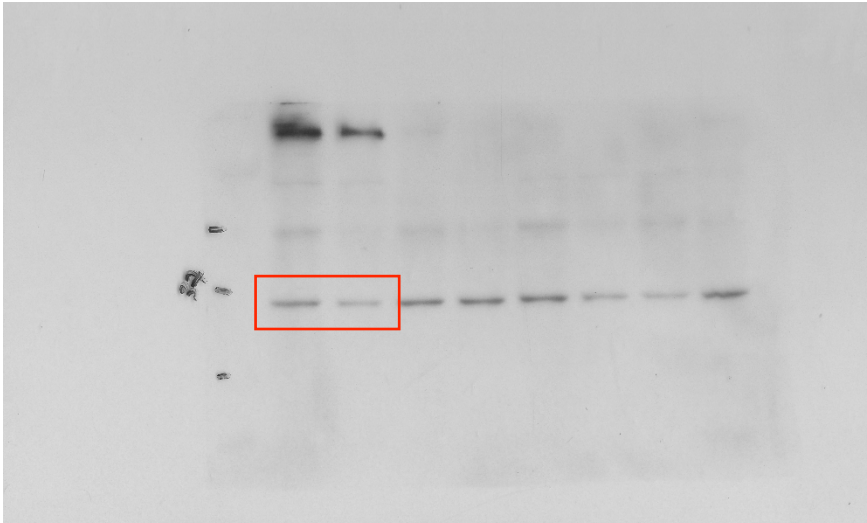


**Figure 4c: Lentiviral-mediated GATA-4 interference in KT21-MG1**

Loading order: scramble, shGATA4, scramble + vehicle, shGATA4 + vehicle, scramble + inhibitor 1, shGATA4 + inhibitor 1, scramble + inhibitor 2, shGATA4 + inhibitor 2

**Ab: anti-Cyclin D1**

Red boxes show the lanes included in the Figures file

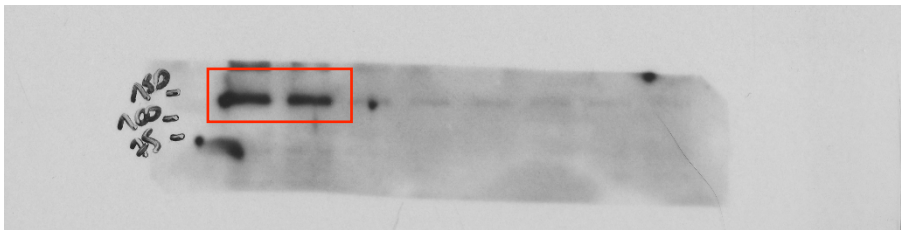


**Figure 4c: Lentiviral-mediated GATA-4 interference in KT21-MG1**

Loading order: scramble, shGATA4, scramble + vehicle, shGATA4 + vehicle, scramble + inhibitor 1, shGATA4 + inhibitor 1, scramble + inhibitor 2, shGATA4 + inhibitor 2

**Ab: anti-pRb**

Red boxes show the lanes included in the Figures file

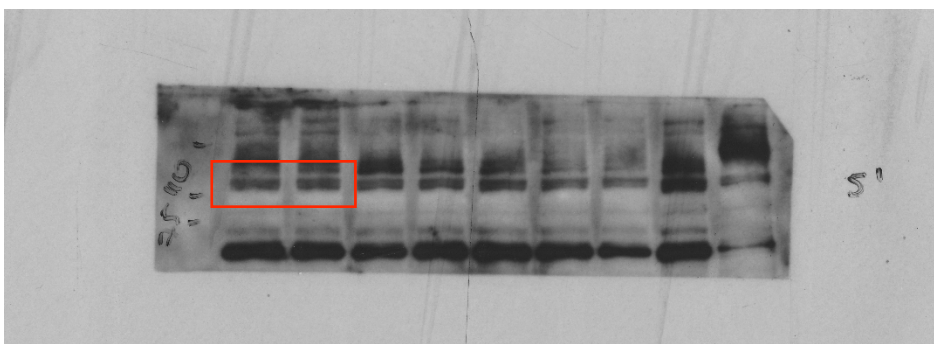


**Figure 4c: Lentiviral-mediated GATA-4 interference in KT21-MG1**

Loading order: scramble, shGATA4, scramble + vehicle, shGATA4 + vehicle, scramble + inhibitor 1, shGATA4 + inhibitor 1, scramble + inhibitor 2, shGATA4 + inhibitor 2

**Ab: anti-Rb**

Red boxes show the lanes included in the Figures file

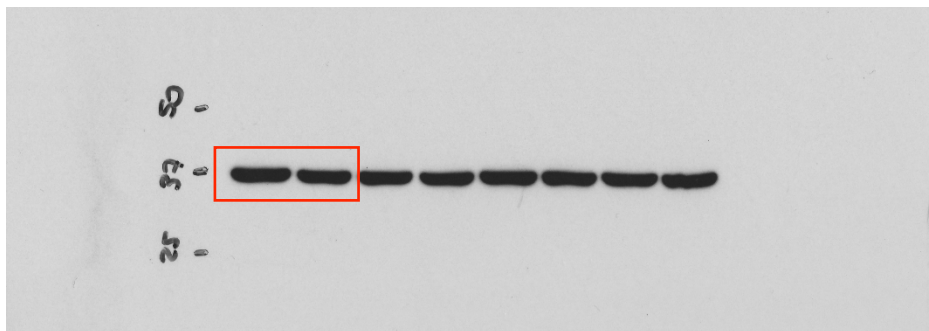


**Figure 4c: Lentiviral-mediated GATA-4 interference in KT21-MG1**

Loading order: scramble, shGATA4, scramble + vehicle, shGATA4 + vehicle, scramble + inhibitor 1, shGATA4 + inhibitor 1, scramble + inhibitor 2, shGATA4 + inhibitor 2

**Ab: anti-GAPDH**

Red boxes show the lanes included in the Figures file

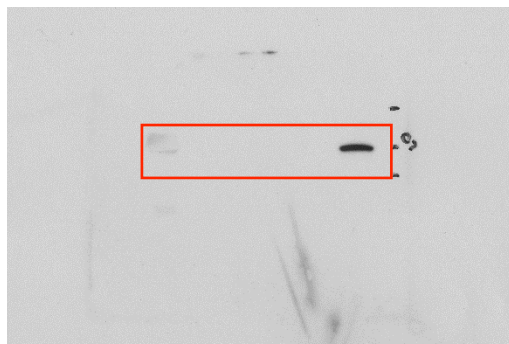


**Figure 5a: GATA-4 expression in HMC, MOS0718, MOS0319, MOS0318, KT21-MG1**

Loading order: HMC, MOS0718, MOS0319, MOS0318, KT21-MG1

**Ab: anti-GATA-4**

Red boxes show the lanes included in the Figures file

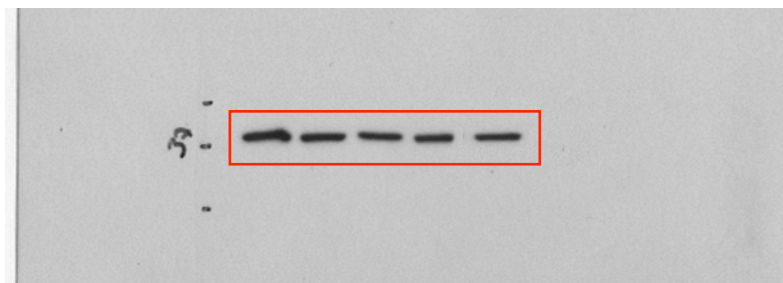


**Figure 5a: GATA-4 expression in HMC, MOS0718, MOS0319, MOS0318, KT21-MG1**

Loading order: HMC, MOS0718, MOS0319, MOS0318, KT21-MG1

**Ab: anti-GAPDH**

Red boxes show the lanes included in the Figures file

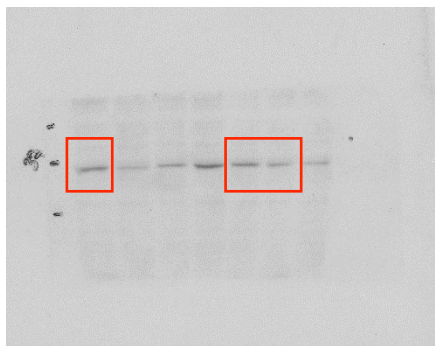


**Figure 5a: GATA-4 inhibition via NSC140905**

Loading order: Vehicle (0.1% DMSO), CTRL, 12.5  $\mu$ M, 25  $\mu$ M, 50  $\mu$ M, 100  $\mu$ M, 200  $\mu$ M (loading mistake)

**Ab: anti-Cyclin D1**

Red boxes show the lanes included in the Figures file

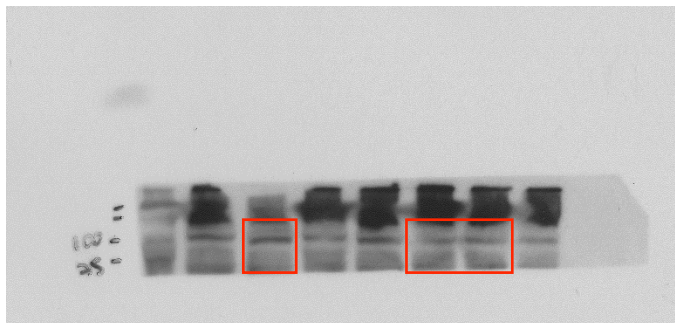


**Figure 5a: GATA-4 inhibition via NSC140905**

Loading order: CTRL, Vehicle (0.1% DMSO), 12.5  $\mu$ M, 25  $\mu$ M, 50  $\mu$ M, 100  $\mu$ M, 200  $\mu$ M

**Ab: anti-pRb**

Red boxes show the lanes included in the Figures file

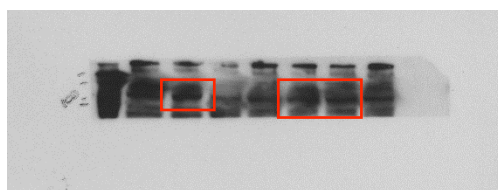


**Figure 5a: GATA-4 inhibition via NSC140905**

Loading order: CTRL, Vehicle (0.1% DMSO), 12.5  $\mu$ M, 25  $\mu$ M, 50  $\mu$ M, 100  $\mu$ M, 200  $\mu$ M

**Ab: anti-Rb**

Red boxes show the lanes included in the Figures file

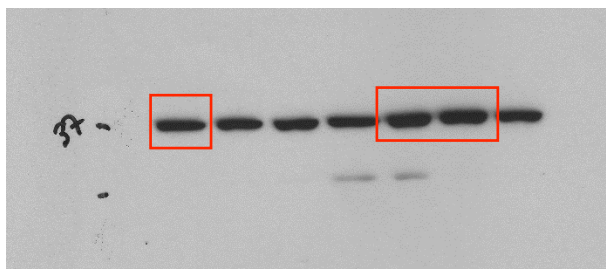


**Figure 5a: GATA-4 inhibition via NSC140905**

Loading order: Vehicle (0.1% DMSO), CTRL, 12.5  $\mu$ M, 25  $\mu$ M, 50  $\mu$ M, 100  $\mu$ M, 200  $\mu$ M (loading mistake)

**Ab: anti-GAPDH**

Red boxes show the lanes used for densitometry analysis for Cyclin D1 (to account for the loading mistake)

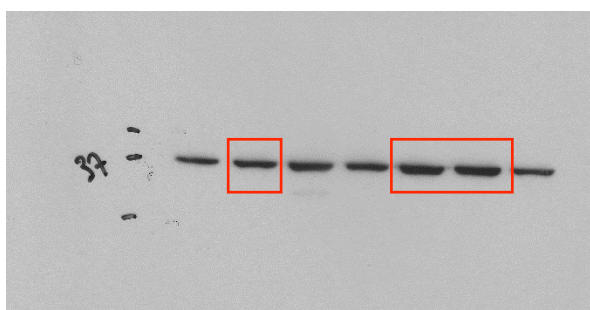


**Figure 5a: GATA-4 inhibition via NSC140905**

Loading order: CTRL, Vehicle (0.1% DMSO), 12.5  $\mu$ M, 25  $\mu$ M, 50  $\mu$ M, 100  $\mu$ M, 200  $\mu$ M

**Ab: anti-GAPDH**

Red boxes show the lanes included in the Figures file

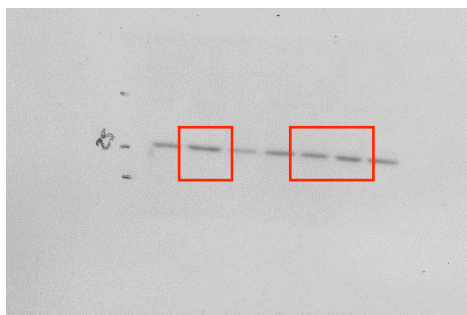


**Figure 5b: GATA-4 inhibition via NSC140905**

Loading order: CTRL, Vehicle (0.1% DMSO), 12.5  $\mu$ M, 25  $\mu$ M, 50  $\mu$ M, 100  $\mu$ M, 200  $\mu$ M (loading mistake)

**Ab: anti-Bcl2**

Red boxes show the lanes included in the Figures file



**Figure 5b: GATA-4 inhibition via NSC140905**

Loading order: CTRL, Vehicle (0.1% DMSO), 12.5  $\mu$ M, 25  $\mu$ M, 50  $\mu$ M, 100  $\mu$ M, 200  $\mu$ M

**Ab: anti-GAPDH**

Red boxes show the lanes included in the Figures file

