

Uncropped Western blots for Supplementary Data

Figure S1a: Cyclin D1 expression in WHO I, II, and III meningioma tissue lysates

Loading order:

WHO I: NMT1, NMT2, J5, J8, MN005, J19, MN176, KT21-MG1

WHO II: NMT1, NMT2, J2, J4, MN001, J24, J25, KT21-MG1

WHO III: NMT1, NMT2, J10, J16, J17, J29, J30, KT21-MG1

Ab: anti-Cyclin D1

Red boxes show the lanes included in the Supplementary Data file

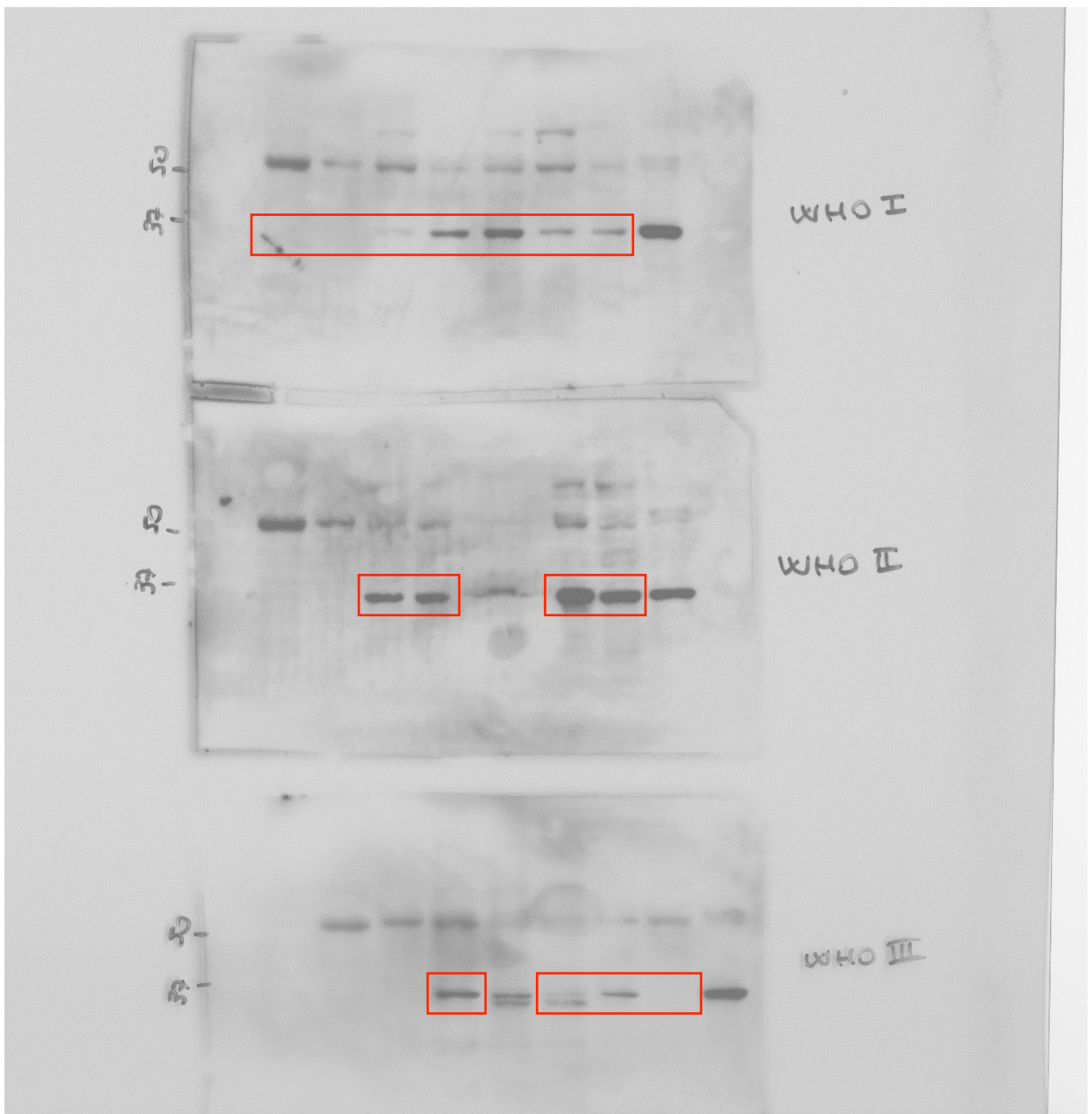


Figure S1a: Cyclin D1 expression in WHO I, II, and III meningioma tissue lysates

Loading order:

WHO I: NMT1, NMT2, J5, J8, MN005, J19, MN176, KT21-MG1

WHO II: NMT1, NMT2, J2, J4, MN001, J24, J25, KT21-MG1

WHO III: NMT1, NMT2, J10, J16, J17, J29, J30, KT21-MG1

Ab: anti-GAPDH

Red boxes show the lanes included in the Supplementary Data file

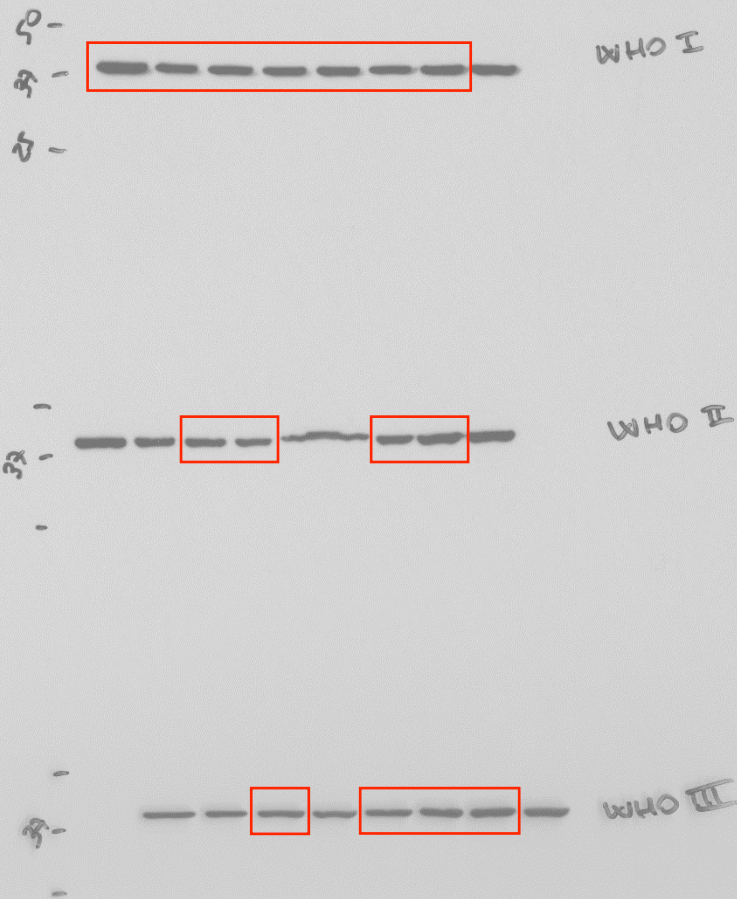


Figure S1c: Cyclin D1 expression in HMC and WHO I PDMN cells

Loading order:

Top Gel: Ben-Men-1, HMC, MN078, MN091, MN102, MN077, MN079
MN088, MCF7

Bottom Gel: KT21-MG1, HMC, MN085, MN052, MN038, MN110, MN113,
MN109

Ab: anti-Cyclin D1

Red boxes show the lanes included in the Supplementary Data file

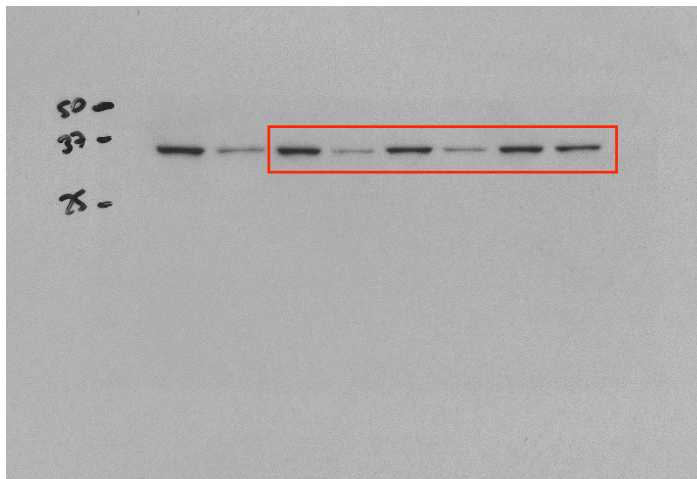
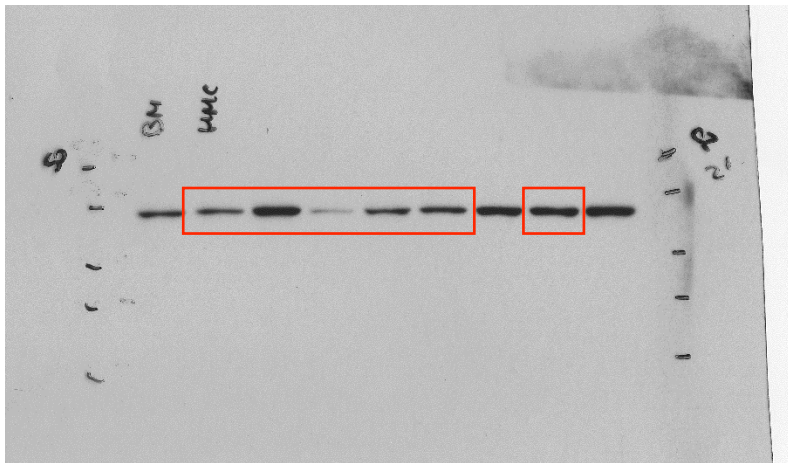


Figure S1c: Cyclin D1 expression in HMC and WHO I PDMN cells

Loading order:

Top Gel: Ben-Men-1, HMC, MN078, MN091, MN102, MN077, MN079
MN088, MCF7

Bottom Gel: KT21-MG1, HMC, MN085, MN052, MN038, MN110, MN113,
MN109

Ab: anti-GAPDH

Red boxes show the lanes included in the Supplementary Data file

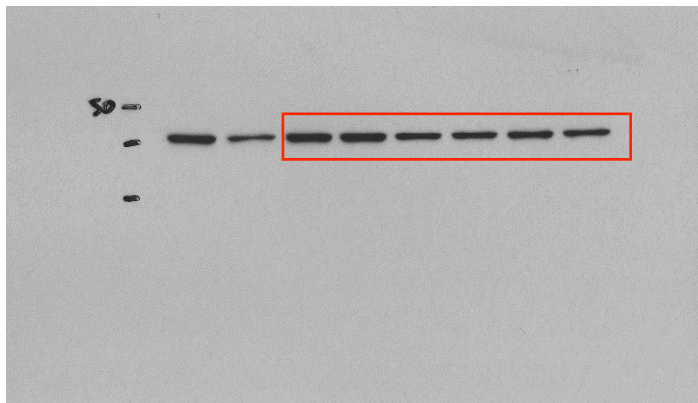
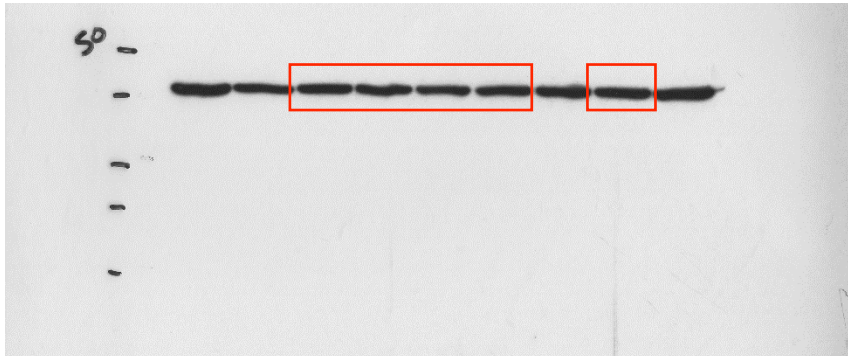


Figure S1d: Cyclin D1 expression in HMC, Ben-Men-1, and KT21-MG1

Loading order: HMC, Ben-Men-1, KT21-MG1, IOMM-Lee, HeLa, U87, U251

Ab: anti-Cyclin D1

Red boxes show the lanes included in the Supplementary Data file

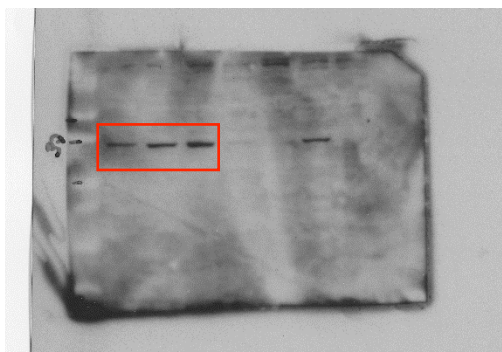


Figure S1d: Cyclin D1 expression in HMC, Ben-Men-1, and KT21-MG1

Loading order: HMC, Ben-Men-1, KT21-MG1, IOMM-Lee, U87, U251

Ab: anti-GAPDH

Red boxes show the lanes included in the Supplementary Data file

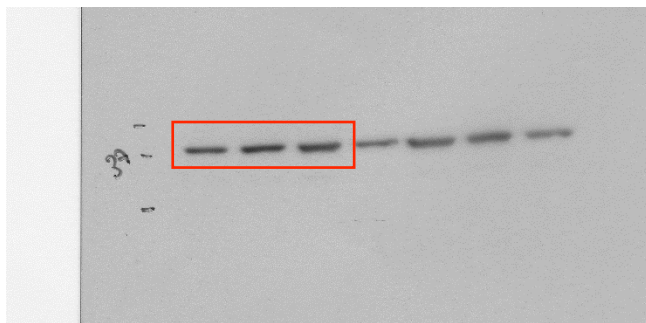


Figure S2b: GATA-4 antibody specificity

Loading order: p-Lenti-GIII-*GFP*, p-Lenti-GIII-*GATA4*, //, KT21-MG1

Ab: anti-GATA-4

Red boxes show the lanes included in the Supplementary Data file

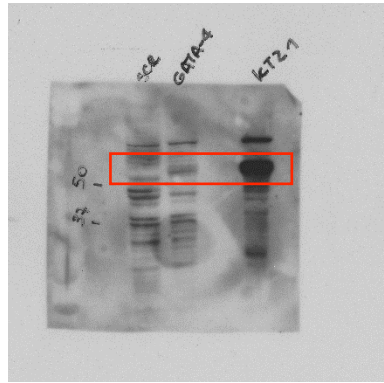


Figure S2b: GATA-4 antibody specificity

Loading order: p-Lenti-GIII-*GFP*, p-Lenti-GIII-*GATA4*, //, KT21-MG1

Ab: anti-GAPDH

Red boxes show the lanes included in the Supplementary Data file

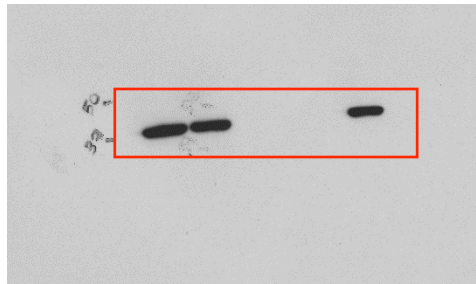


Figure S3b: Lentiviral-mediated overexpression of miR-195 in KT21-MG1 cells

Loading order: LentimiR-*GFP*, LentimiR-*195*

Ab: anti-GATA-4

Red boxes show the lanes included in the Supplementary Data file

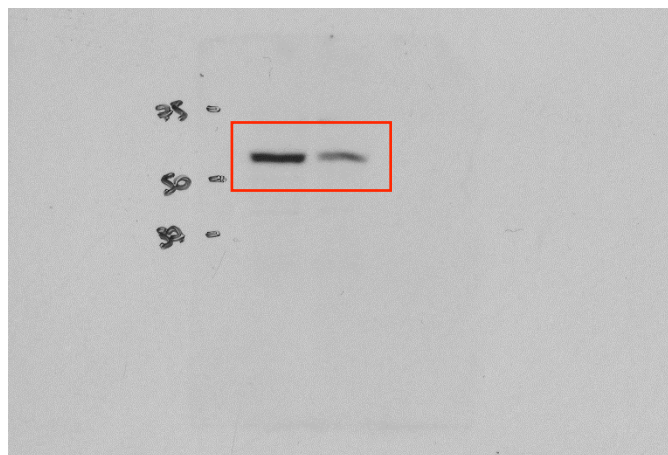


Figure S3b: Lentiviral-mediated overexpression of miR-195 in KT21-MG1 cells

Loading order: LentimiR-*GFP*, LentimiR-*195*

Ab: anti-GAPDH

Red boxes show the lanes included in the Supplementary Data file

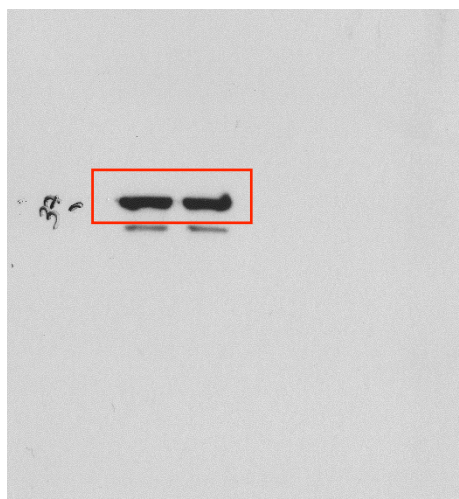


Figure S5a: Cell culture-derived exosomes

Loading order: MN37, MN73, MN161, //, MN37 exosomes, MN73 exosomes, MN161 exosomes, // HeLa

Ab: anti-CD63

Red boxes show the lanes included in the Supplementary Data file

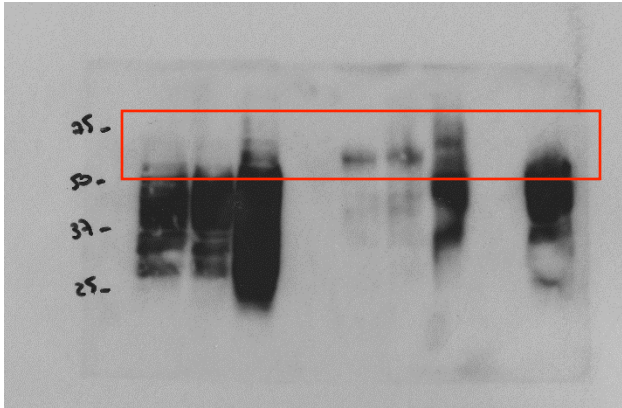


Figure S5a: Cell culture-derived exosomes

Loading order: MN37, MN73, MN161, //, MN37 exosomes, MN73 exosomes, MN161 exosomes, // HeLa

Ab: anti-CD9

Red boxes show the lanes included in the Supplementary Data file

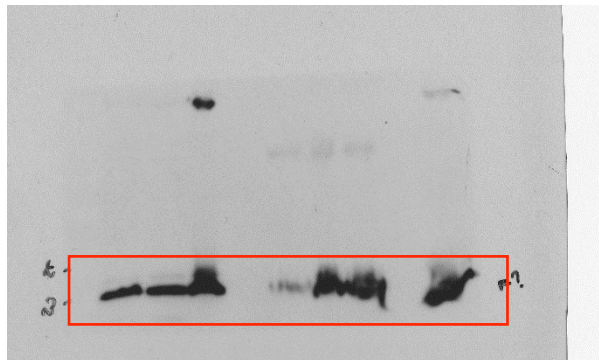


Figure S5a: Cell culture-derived exosomes

Loading order: MN37, MN73, MN161, //, MN37 exosomes, MN73 exosomes, MN161 exosomes, // HeLa

Ab: anti-Calnexin

Red boxes show the lanes included in the Supplementary Data file

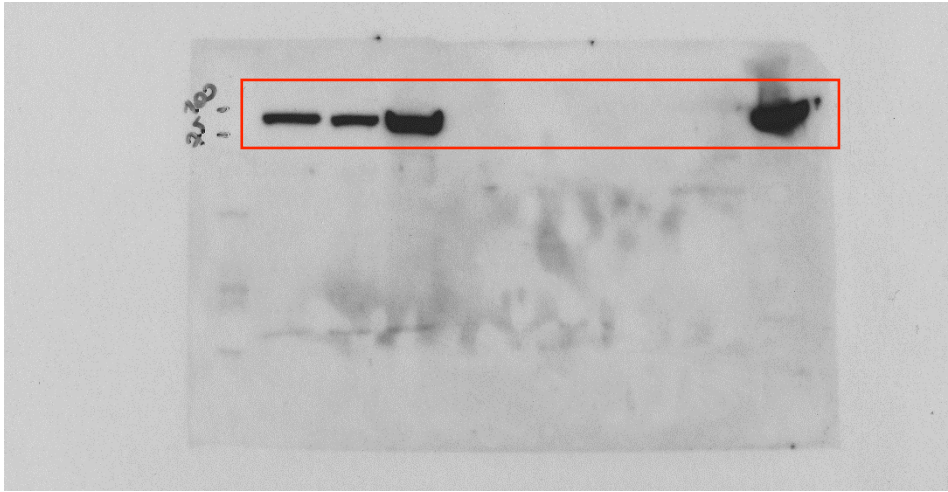


Figure S5a: Cell culture-derived exosomes

Loading order: MN37, MN73, MN161, //, MN37 exosomes, MN73 exosomes, MN161 exosomes, // HeLa

Ab: anti-GM130

Red boxes show the lanes included in the Supplementary Data file

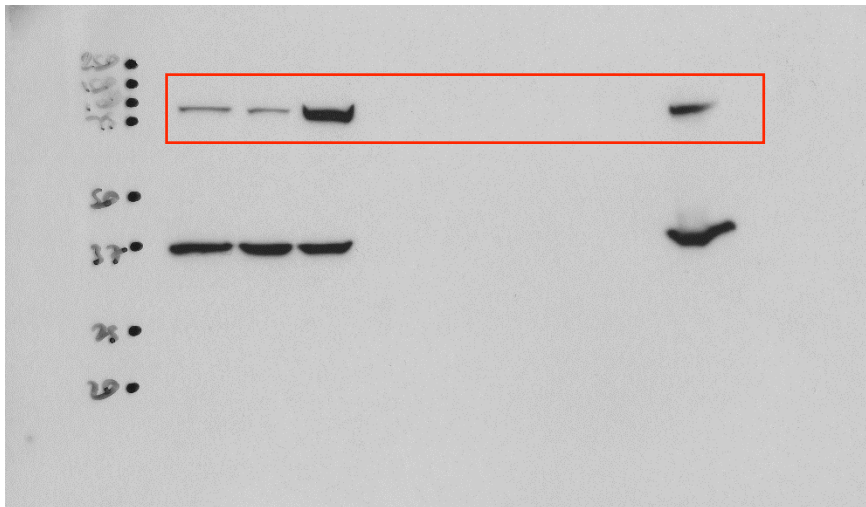


Figure S5a: Cell culture-derived exosomes

Loading order: MN37, MN73, MN161, //, MN37 exosomes, MN73 exosomes, MN161 exosomes, // HeLa

Ab: anti-GAPDH

Red boxes show the lanes included in the Supplementary Data file

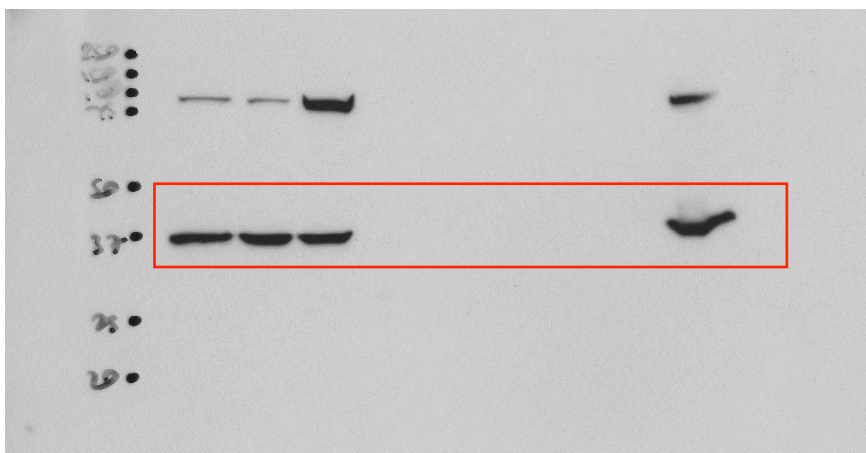


Figure S5b: Blood-derived exosomes

Loading order: #1, #2, #3, MN183, MN227, MN260, //, Ben-Men-1, HeLa

Ab: anti-CD63

Red boxes show the lanes included in the Supplementary Data file

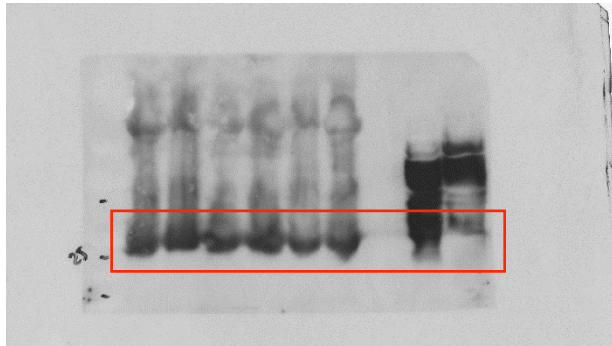


Figure S5b: Blood-derived exosomes

Loading order: #1, #2, #3, MN183, MN227, MN260, //, Ben-Men-1, HeLa

Ab: anti-CD9

Red boxes show the lanes included in the Supplementary Data file

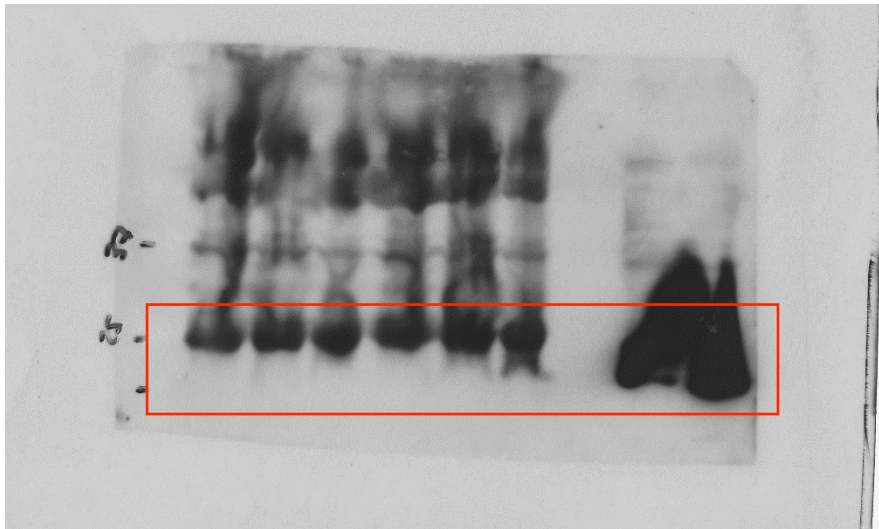


Figure S5b: Blood-derived exosomes

Loading order: #1, #2, #3, MN183, MN227, MN260, //, Ben-Men-1, HeLa

Ab: anti-Calnexin

Red boxes show the lanes included in the Supplementary Data file

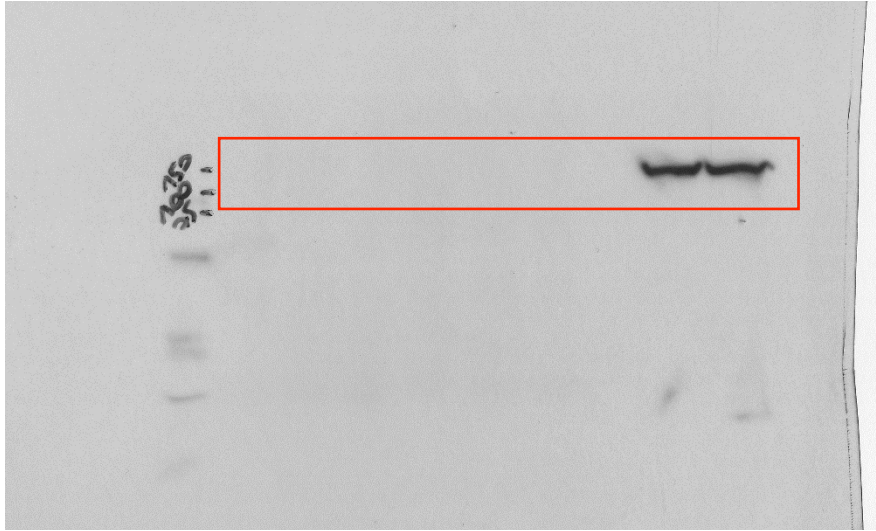


Figure S5b: Blood-derived exosomes

Loading order: #1, #2, #3, MN183, MN227, MN260, //, Ben-Men-1, HeLa

Ab: anti-GM130

Red boxes show the lanes included in the Supplementary Data file

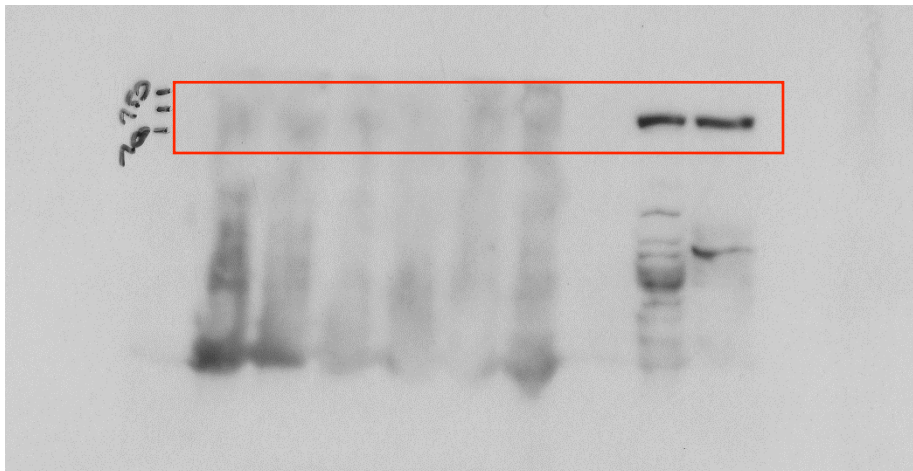


Figure S5b: Blood-derived exosomes

Loading order: #1, #2, #3, MN183, MN227, MN260, //, Ben-Men-1, HeLa

Ab: anti-GAPDH

Red boxes show the lanes included in the Supplementary Data file

