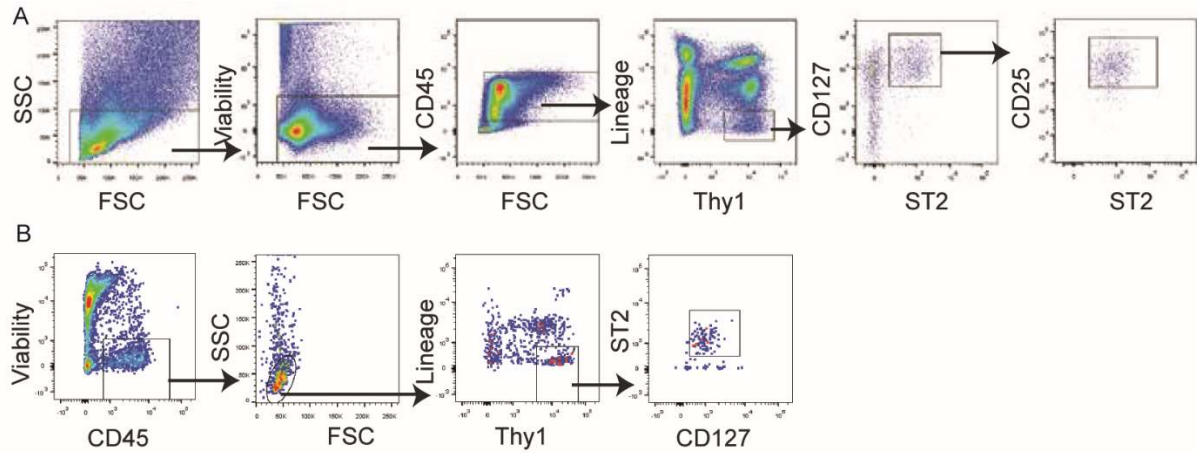
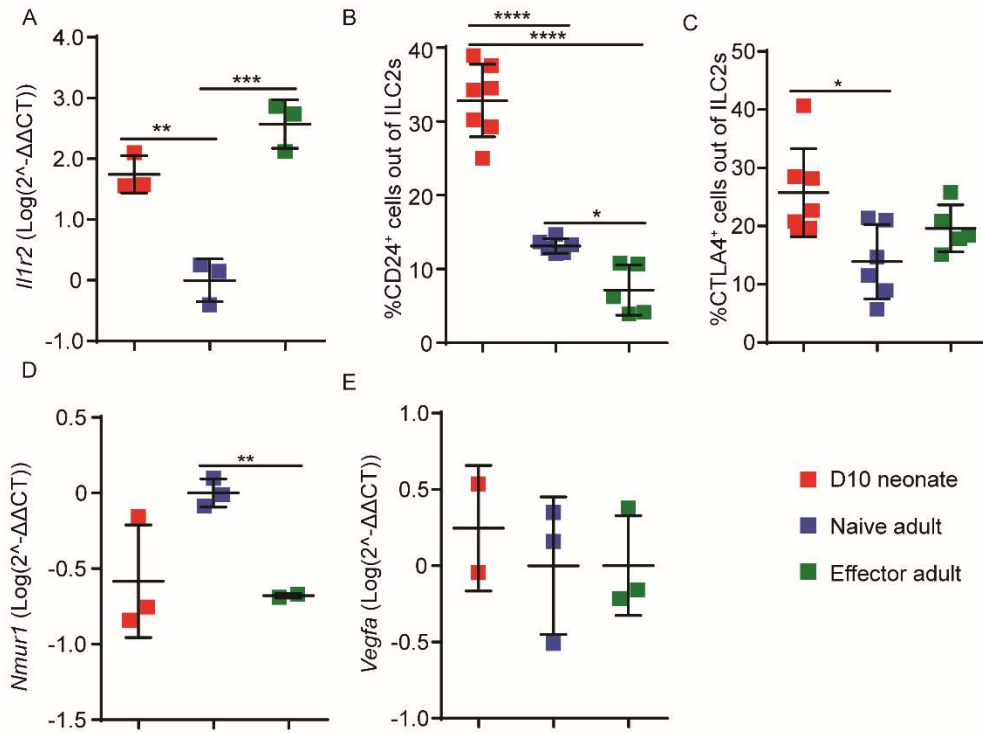


Supplemental Material:



Supplemental Figure 1: Gating scheme for lung ILC2s

(A) Mouse lung cells were gated for singlets and ILC2s were identified as $SSC^{lo}FSC^{lo}LiveCD45^{+}Lineage^{-}Thy1^{+}CD127^{+}ST2^{+}CD25^{+}$. (B) For purity sorts, doublets were gated out and ILC2s were gated as $Live, CD45^{+}Lineage^{-}Thy1^{+}CD127^{+}ST2^{+}$.



Supplemental Figure 2: Validation of microarray analysis of Figure 1G

Day 10 neonatal, naïve adult (8 weeks) and effector adult (analyzed a day after 3 consecutive daily I.N administrations of IL-33) (8 weeks old) mouse lung ILC2s were collected for qPCR analysis of *Il1r2* (A), *Nmur1* (D), and *Vegfa* (E). For neonates, n=2-3, each replicate represents 4 pooled mouse ILC2s. For adults, n=3, each replicate represents 3 pooled mouse ILC2s. Day 10 neonates, naïve adult and effector adult mouse lung ILC2s were analyzed for CD24 (B) and intracellular CTLA4 (C) (n=5-7, 2 independent experiments). *P < .05, **P < .01, ****P < .0001. (1-way ANOVA with Bonferroni post hoc test)