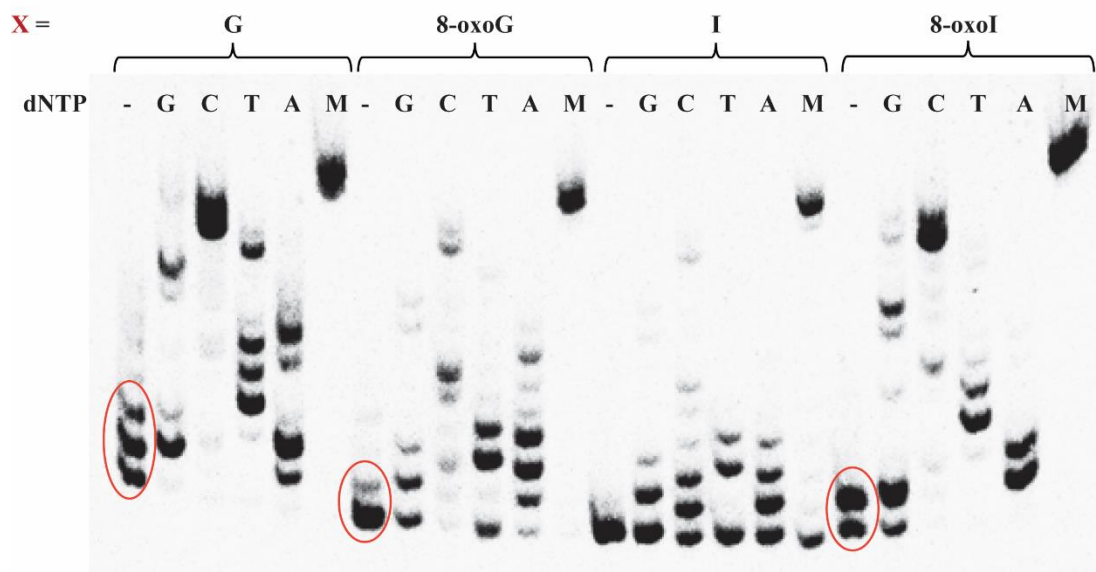


3'- CUC CAC ACA UCC ACC ACX ACC UCA ACU GU
 (5) 5' - HOP*(O)₃ - GAG GTG TGT AGG TGG TG

X = (1) - G; (2) - I; (3) - 8-oxoG; (4) - 8-oxoI



Additional bands were observed on the controls upon increasing the concentration of the RT.
 This observation is general of all RTs.

S13 File. Duplexes 1:5 – 4:5 in the presence of higher [HIV-RT]. HIV units used were ca. 0.187 per well, 30 times more than the experiments described on the manuscript.