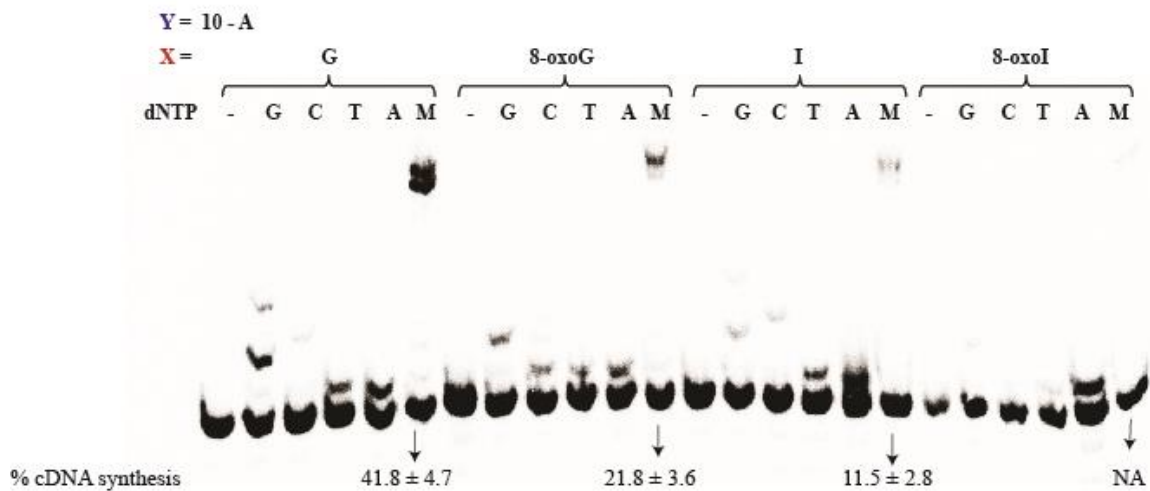
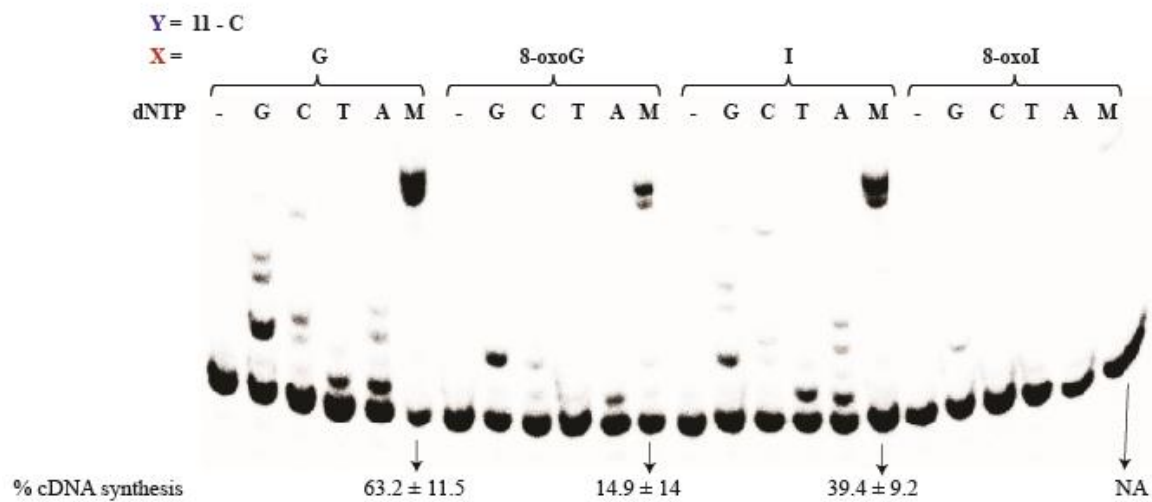


3' - CUC CAC ACA UCC ACC ACX ACC UCA ACU GU
 5' - HOP⁺(O)₃ - GAG GTG TGT AGG TGG TGY U

X = 1 - G; 2 - I; 3 - 8-oxoG; 4 - 8-oxoI; 9 - 8-BrI
 Y = 10 - A; 11 - C

HIV-RT



dG added in app. 18%
 in all cases

Full cDNA elongation
 occurred in app. 21%
 in all cases

S14 File. Duplexes 1:10 – 4:10, 1:11 – 4:11 and 9:10 / 9:11 in the presence of HIV-RT