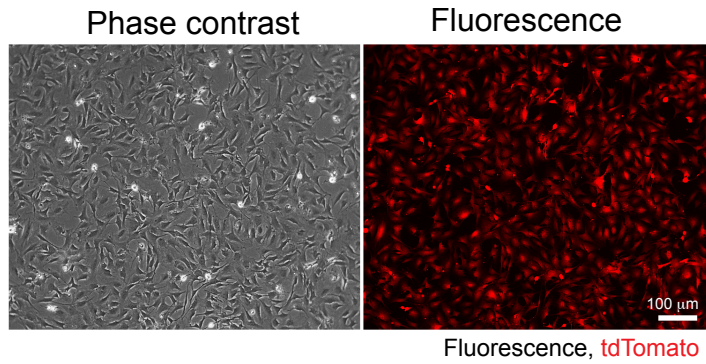
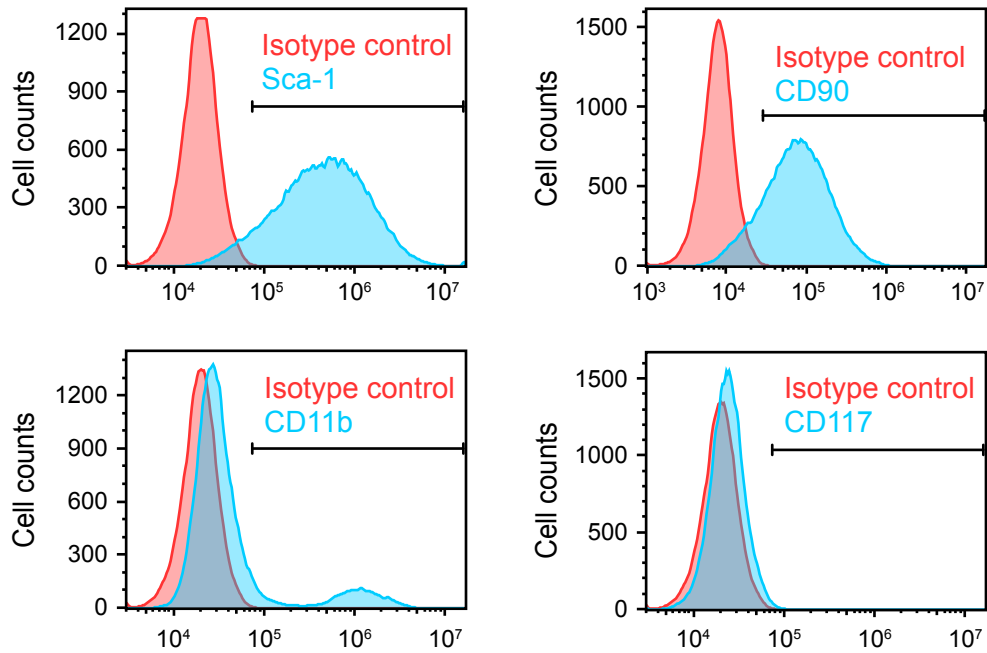
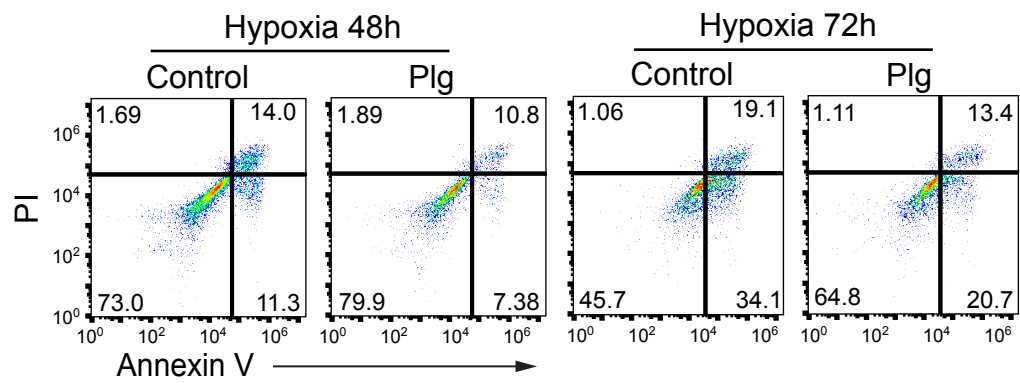


**A****B****Supplementary Figure 1. Characterization of isolated MSCs.**

MSCs were isolated from bone marrow of *Col2-Cre;Rosa26-LSL-tdTomato* mice. (A) Cells were imaged by light or fluorescence microscope. Representative images are shown. (B) Cells were probed with anti-Sca-1, anti-CD90, anti-CD11b, or anti-CD117 antibody, and analyzed by flow cytometry. Representative sortings are shown.



**Supplementary Figure 2. Plg inhibits hypoxia-induced apoptosis in MSCs.**

Mouse MSCs were treated with 20  $\mu\text{g/ml}$  Plg or control medium under hypoxia (1% O<sub>2</sub>) for 48 or 72 hours. Cells were stained with propidium iodide (PI) and annexin V, followed by flow cytometry analysis.