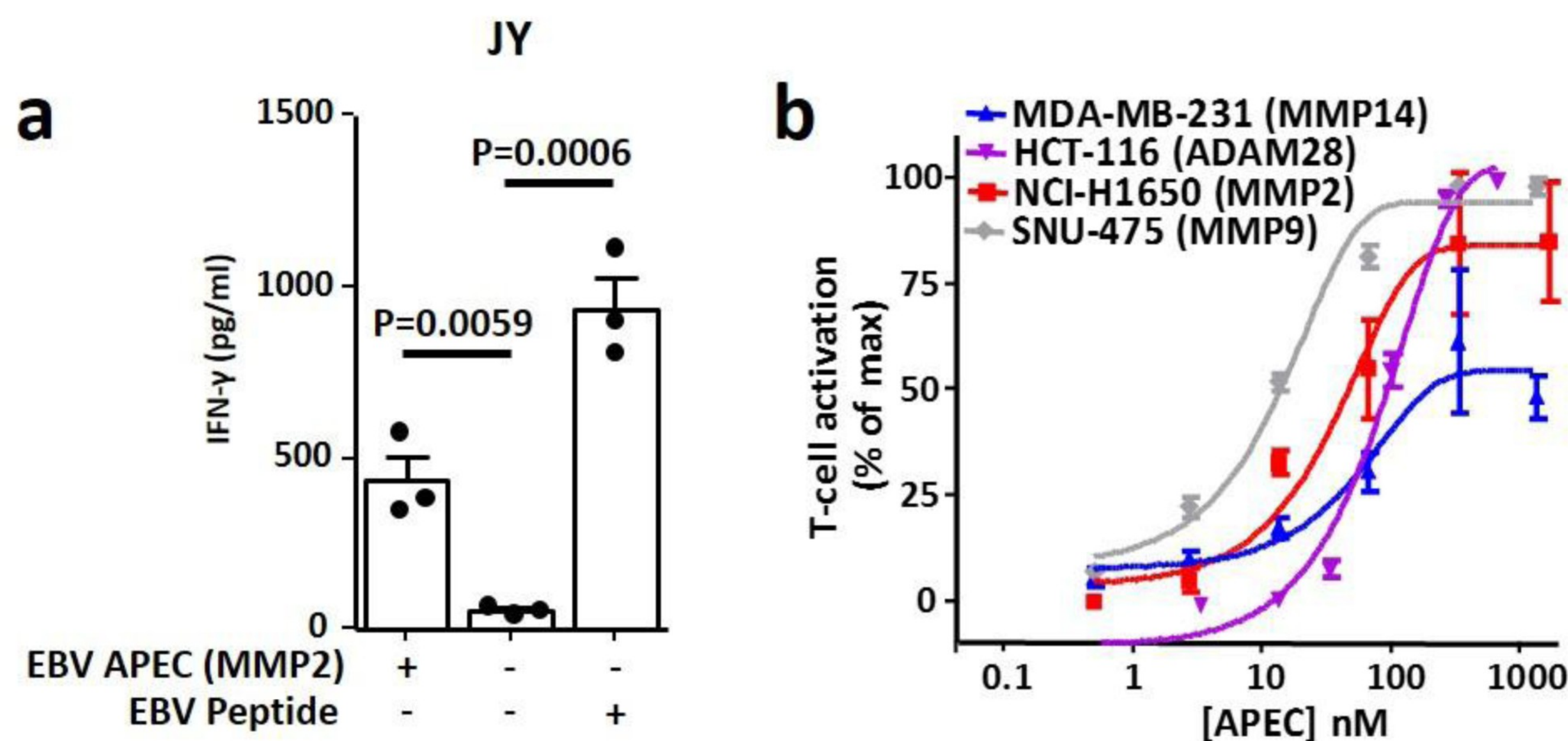


Supplementary Fig. 11: EBV-specific T cells can be re-directed to target tumor cells using APEC and CMV-CTL activation using different proteases to cleave APECs.

From: [Antibody-mediated delivery of viral epitopes to tumors harnesses CMV-specific T cells for cancer therapy](#)



(a) Tumor cells treated with APEC conjugated with EBV-derived epitopes are recognised by EBV-specific T cells (n=3 independent samples). Data represented as mean and error bars represent standard error of the mean. Significance was determined by unpaired two-tailed t-test. (b) Multiple tumor types can be recognized by peptide-specific T cells after treatment with cAPEC containing ADAM28, MMP2, MMP9 or MMP14 cleavable peptides (n=3 independent samples). Data represented as mean and error bars represent standard error of the mean.

[Back to article page >](#)

Nature Biotechnology ISSN 1546-1696 (online)

nature research

[About us](#)

[Press releases](#)

[Press office](#)

[Contact us](#)



Discover content

Journals A-Z

Articles by subject

Nano

Protocol Exchange

Nature Index

Publish with us

Guide to Authors

Guide to Referees

Editorial policies

Open access

Reprints & permissions

Researcher services

Research data

Language editing

Scientific editing

Nature Masterclasses

Nature Research Academies

Libraries & institutions

Librarian service & tools

Librarian portal

Open research

Advertising & partnerships

Advertising

Partnerships & Services

Media kits

Branded content

Career development

Nature Careers

Nature Conferences

Nature events

Regional websites

Nature China

Nature India

Nature Japan

Nature Korea

Nature Middle East

SPRINGER NATURE

© 2020 Springer Nature Limited

[Privacy Policy](#)

[Use of cookies](#)

[Manage cookies](#)

[Legal notice](#)

[Accessibility statement](#)

[Terms & Conditions](#)