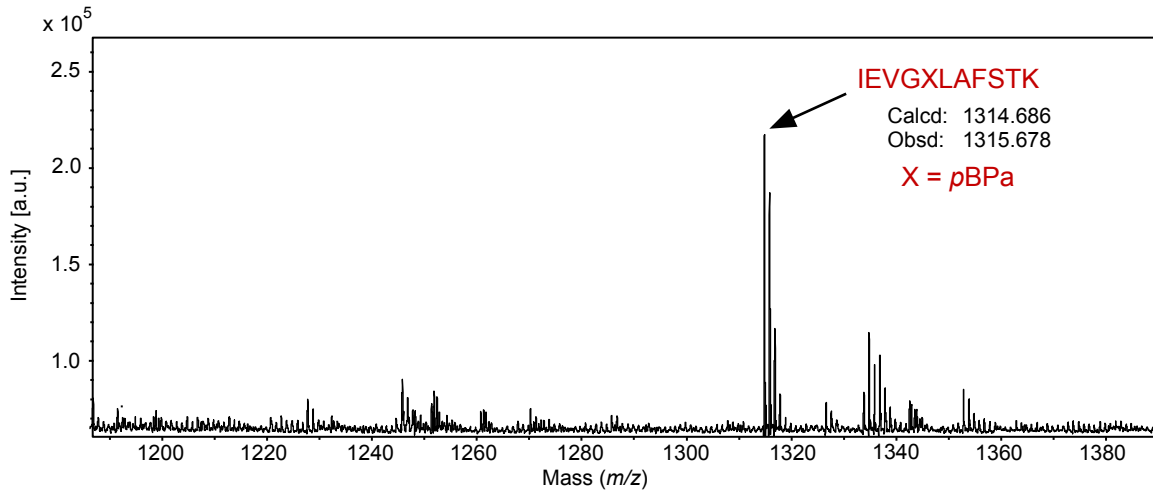


A

1 MKKPLISVAAALLGVALGTPYYLGVKAESLTQQQKILQEAGFLTVESHQ 50
 51 YERGWFTSTETTIVIRLKPPELLNARKYLPDNLKTVLEQPVTLVNHITHGP 100
 101 FAGGFGTQAYIETEFKYAPETEKVLERFFGKQAPVSLANTVYFNGSGKME 150
 151 VSVPAFDYEELSGIRLHWEGLTGKTVYQKGFKSYRNSYDAPLFKIKLADK 200
 201 GDAAFEKAHFDSETSDGINPLALGSSNLTLEKFSLEWKEGVDYINVKLNEL 250
 251 VNLVTDLQIGAFINPNGSIAPSK**IEVGXLAFSTK**TGESGSFINSEGQFRF 300
 301 DTLVYGNEKYGPLDIHIAAEHLASALTVLKRKFAQISAKKMTEEQIRND 350
 351 LIAAVKGEASGLFTNNPVLDIKTFRFTQPSGKIDVGGKIMFKDMKKEDLN 400
 401 QLGLMLKKTEADIRMSIPQKMLEDLAVSQAGNIFSVNAEDEAEGRASLDD 450
 451 INETLRLMVDSTVQSMAREKYLTNLNGDQIDTAISLKNQLKLNKTLQNE 500
 501 PEPDFDEGGMVSEPQQGGSGGSGGSWSHPQFEKGGGSGGGSGGGSGGSWSHPQ 550
 551 FEKGGGGGGHHHHHH 564

B**C**