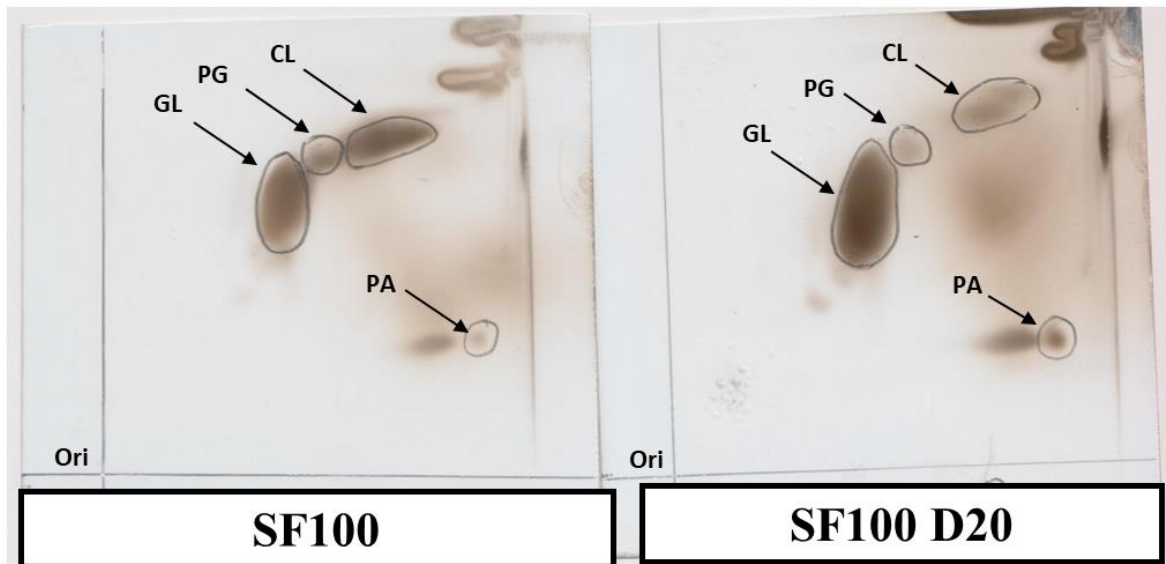


**Figure S1.** Major steps in the CL biosynthetic pathways.

PA = Phosphatidic acid; CTP = cytidine triphosphate; CDP-DAG = cytidine diphosphate – diacylglycerol; PGP = phosphatidylglycerol-phosphate.



**Figure S2.** Major CM PLs of *S. mitis-oralis* strains. Proportions of PG, CL, and PA in CM of SF100 and its DAP-R derivative SF100 D20 were determined by 2D thin-layer chromatography. GL is a major CM glycolipid found in all VGS.