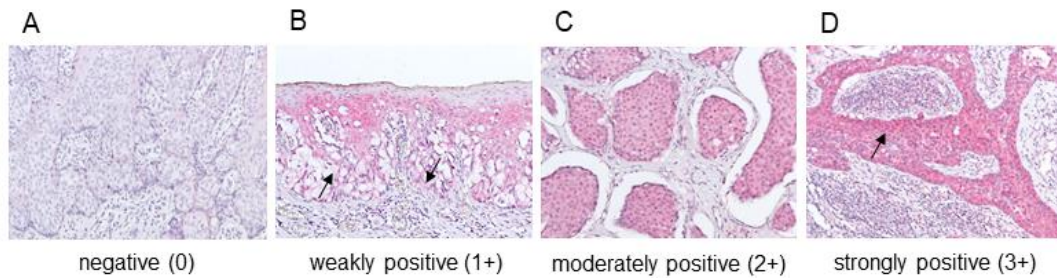
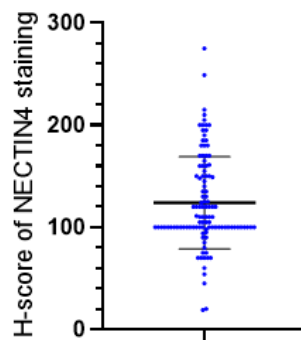


Supplementary Figure S1



Supplementary Figure S1. Staining intensity of the nectin cell adhesion molecule 4 (NECTIN4) antibody. Positive signals are indicated by red. (A) Negative staining (0), (B) weakly positive staining (1+), (C) moderately positive staining (2+), and (D) strongly positive staining (3+).

Supplementary Figure S2



Supplementary Figure S2. H-score for nectin cell adhesion molecule 4 (NECTIN4) staining in extramammary Paget's disease.