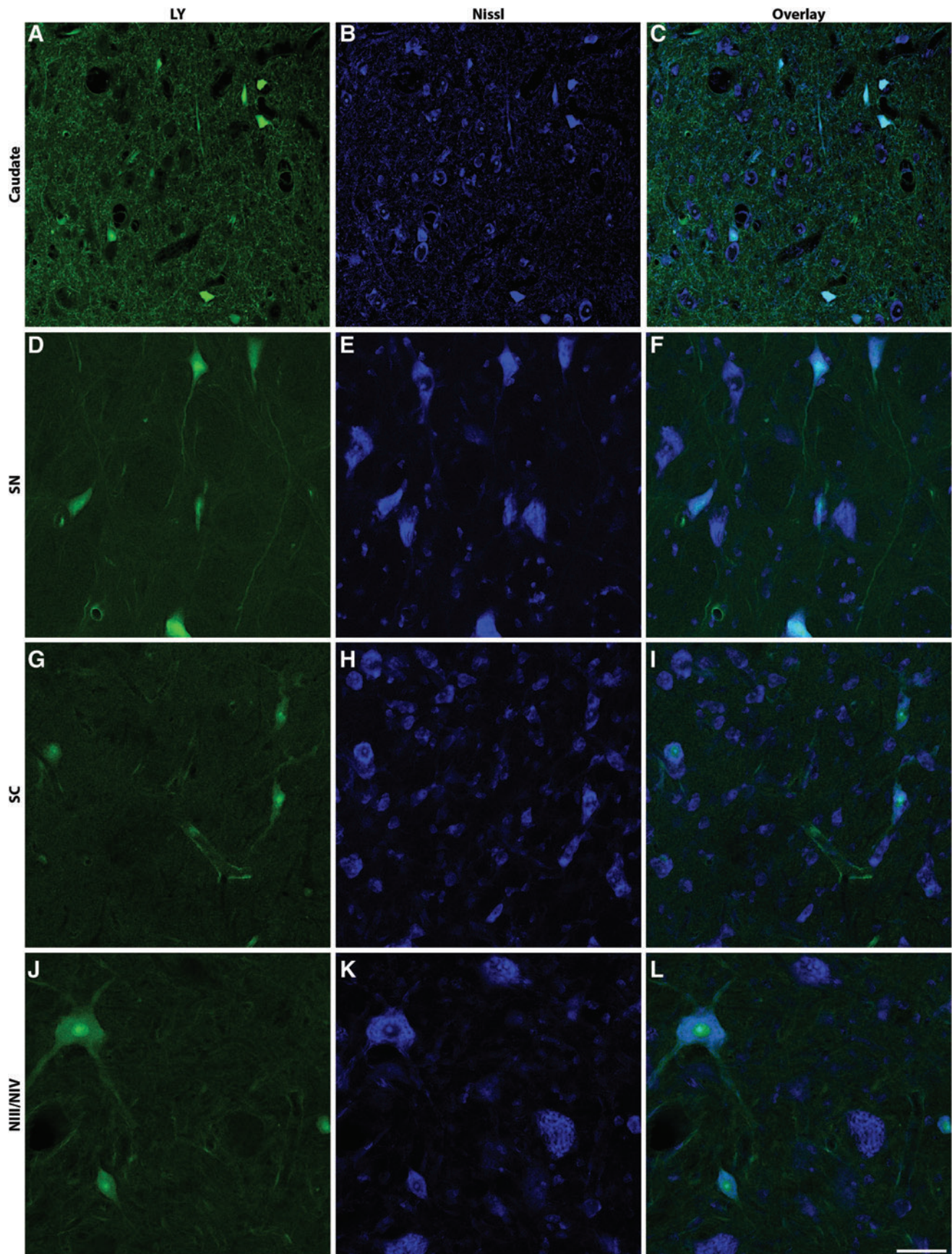


Supplementary Data



SUPPLEMENTARY FIG. S1. Neuronal phenotype of permeabilized cells. Example areas from caudate (A-C, from 0d repetitive injury), substantia nigra (SN) (D-F, from 3-day [3d] repetitive injury), superior colliculus (SC; G-I, from 15 min [0d] repetitive injury), and cranial nerve III/IV (CNIII/NIV; J-L, from 3d repetitive injury) show that permeabilized cells are neurons. LY, (Lucifer yellow) green; Nissl, blue. Scale bar = 50 μ m.