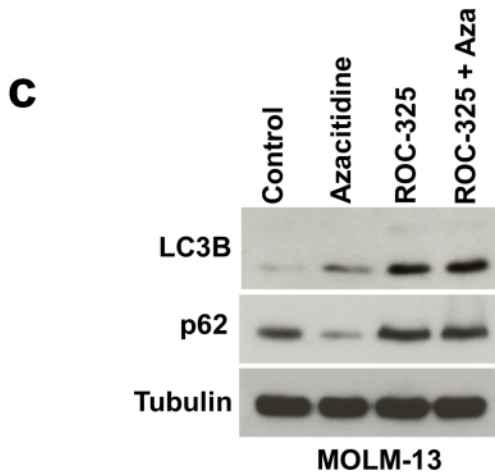
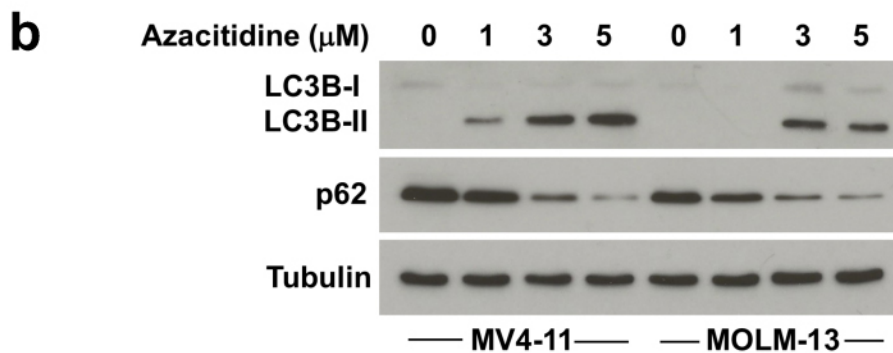
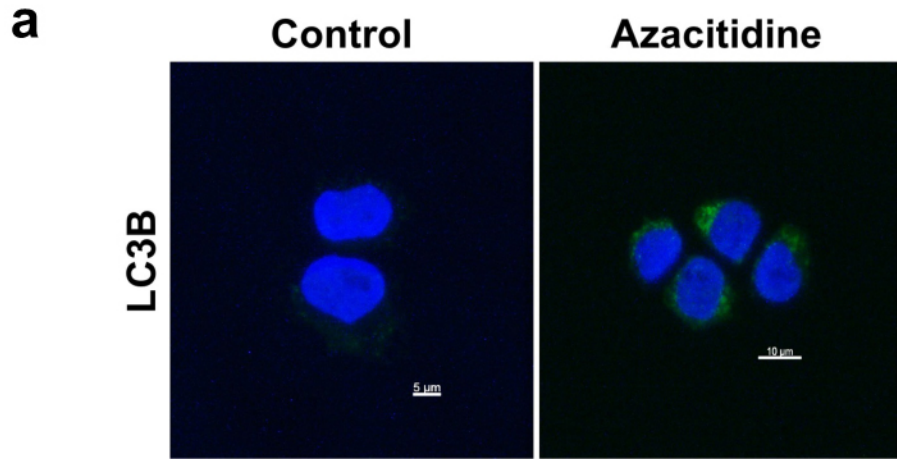


Supplemental Figure 5



Supplemental Figure 5. Azacitidine induces autophagy. (a) Formation of LC3B punctae. MOLM-13 cells were treated with 3 μM azacitidine for 24 h. LC3B punctae were visualized by immunocytochemistry as detailed in the Materials and Methods. (b) Effects of azacitidine on the autophagy markers LC3B and p62. MV4-11 and MOLM-13 cells were treated with the indicated concentrations of azacitidine for 24 h. LC3B and p62 levels were assessed by immunoblotting. Tubulin documented equal protein loading. (c) ROC-325 blocks azacitidine-induced autophagy. MOLM-13 cells were treated with the indicated concentrations of azacitidine for 24 h. LC3B and p62 levels were assessed by immunoblotting. Tubulin documented equal protein loading.