

Supplemental Figure 7

a

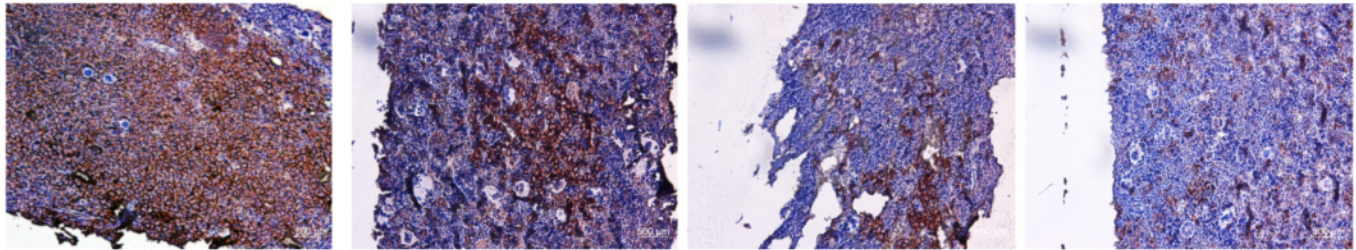
Vehicle

ROC-325

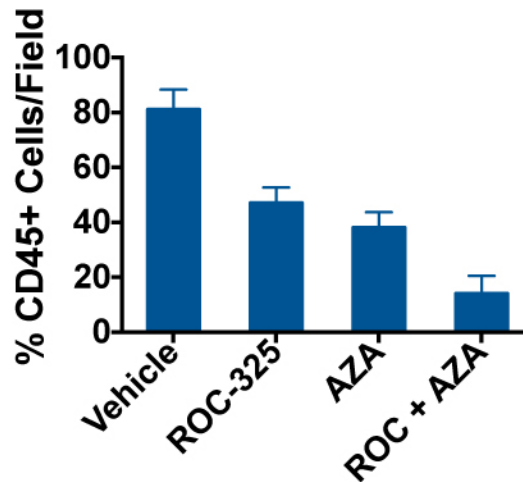
Azacitidine

ROC-325 + Aza

CD45



b



Supplemental Figure 7. Engraftment efficiency of MV4-11 cells. (a) Bone marrow specimens from each treatment group were stained with a human-specific anti-CD45 antibody. CD45 expression was visualized by immunohistochemistry as detailed in the Materials and Methods. (b) Quantification of CD45 positivity. The percentages of CD45+ cells per field were scored for each treatment group. N = 5 ± SD.