

Expression Patterns of Coagulation Factor XIII Subunit A on Leukemic Lymphoblasts Correlate with Clinical Outcome and Genetic Subtypes in Childhood B-cell Progenitor Acute Lymphoblastic Leukemia

Bettina Kárai, Katalin Gyurina, Anikó Ujfalusi, Łukasz Sędek, Gábor Barna, Pál Jáksó, Peter Svec, Eszter Szánthó, Attila Csaba Nagy, Judit Müller, Réka Simon, Ágnes Vojczek, István Szegedi, Lilla Györgyi Tizslavicz, Jerzy R. Kowalczyk, Alexandra Kolenova, Gábor T. Kovács, Tomasz Szczepański³, Michael Dworzak, Angela Schumich, Andishe Attarbaschi, Karin Nebral, Oskar A. Haas, János Kappelmayer, Zsuzsanna Hevessy and Csongor Kiss

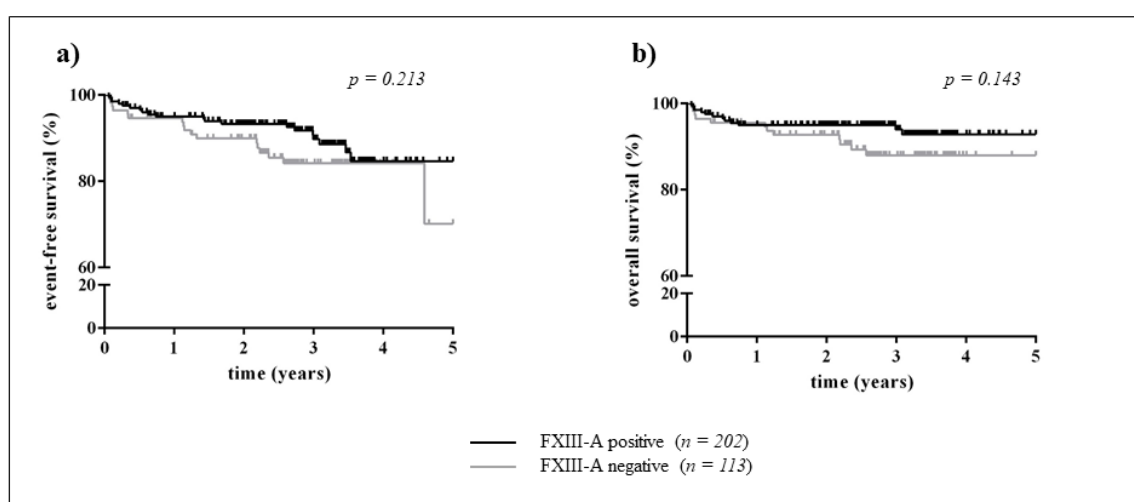


Figure S1. Event-free and overall survival of children with B-cell precursor acute lymphoblastic leukemia (ALL) of FXIII-A positive and negative groups.

Table S1. Initial clinical characterization and risk stratification of study patients.

| Variables | n | % |
|---------------------------|-----|------|
| Gender | | |
| Male | 216 | 52.9 |
| Female | 192 | 47.1 |
| Age | | |
| <6 years | 283 | 69.4 |
| ≥6 years | 125 | 30.6 |
| WBC count | | |
| <20,000 cells/ μ l | 296 | 72.5 |
| ≥20,000 cells/ μ l | 111 | 27.2 |
| NA | 1 | 0.3 |
| FXIII-A expression ratio | | |
| Negative (<20%) | 137 | 33.6 |
| Positive | 271 | 66.4 |
| dim (20–79%) | 189 | 46.3 |
| bright (≥80%) | 82 | 20.1 |
| Genetic risk categories * | | |
| Good | 184 | 45.1 |

| | | |
|--|-----|------|
| Intermediate | 118 | 28.9 |
| Poor | 17 | 4.2 |
| NA | 89 | 21.8 |
| “B-other” genetic risk category | | |
| Yes | 110 | 26.9 |
| No | 209 | 51.2 |
| NA | 89 | 21.8 |
| Prednisone response on day 8 | | |
| Good | 378 | 92.6 |
| Poor | 24 | 5.9 |
| NA | 6 | 1.5 |
| FC-MRD (day15) | | |
| FLR: <0.1% | 96 | 23.5 |
| FMR: 0.1–10% | 262 | 64.2 |
| FHR: ≥10% | 47 | 11.5 |
| NA | 3 | 0.7 |
| clinical risk groups | | |
| Standard risk | 87 | 21.3 |
| Intermediate risk | 241 | 69.1 |
| High risk | 74 | 18.1 |
| NA | 6 | 1.5 |
| Event-free survival | | |
| Alive | 361 | 88.5 |
| Died/relapsed | 47 | 11.5 |
| Overall survival | | |
| Alive | 382 | 93.6 |
| Died | 26 | 6.4 |

* according to cytogenetics and FISH (see text). Abbreviations: *n* = number, WBC = white blood cell count, NA = not available, FC-MRD = minimal residual disease by flow cytometry, FLR = flow low risk, FMR = flow medium risk, FHR = flow high risk.

Table S2. Distribution of copy number alterations (CNA) according to FXIII-A expression patterns.

| FXIII-A Expression Pattern | Risk Estimation According to CAN * | | | |
|----------------------------|------------------------------------|--------------|------|--------|
| | Good | Intermediate | Poor | No CNA |
| Negative | 3 | 1 | 7 | 9 |
| Dim | 6 | 4 | 3 | 12 |
| Bright | 3 | 1 | 2 | 8 |

* See text.



© 2020 by the authors. Licensee MDPI, Basel, Switzerland. This article is an open access article distributed under the terms and conditions of the Creative Commons Attribution (CC BY) license (<http://creativecommons.org/licenses/by/4.0/>).