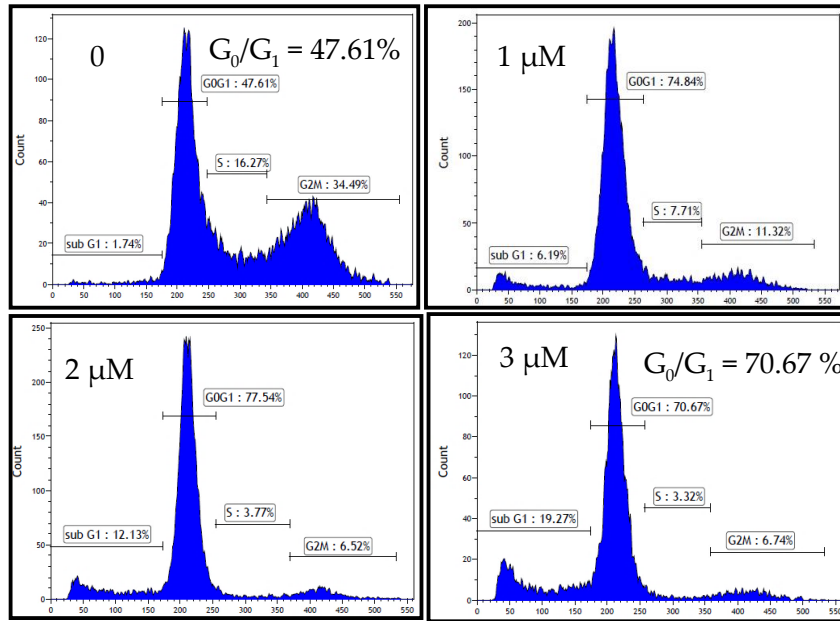
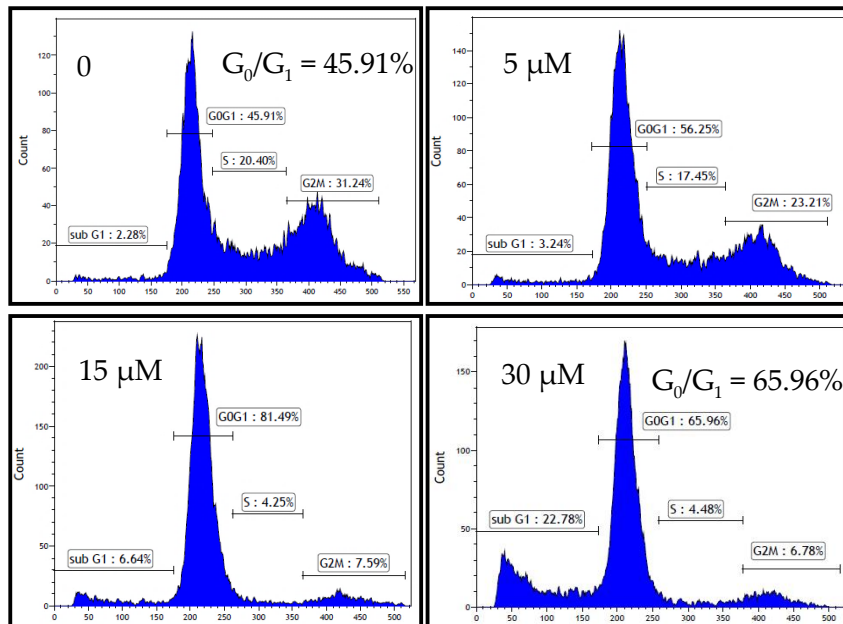


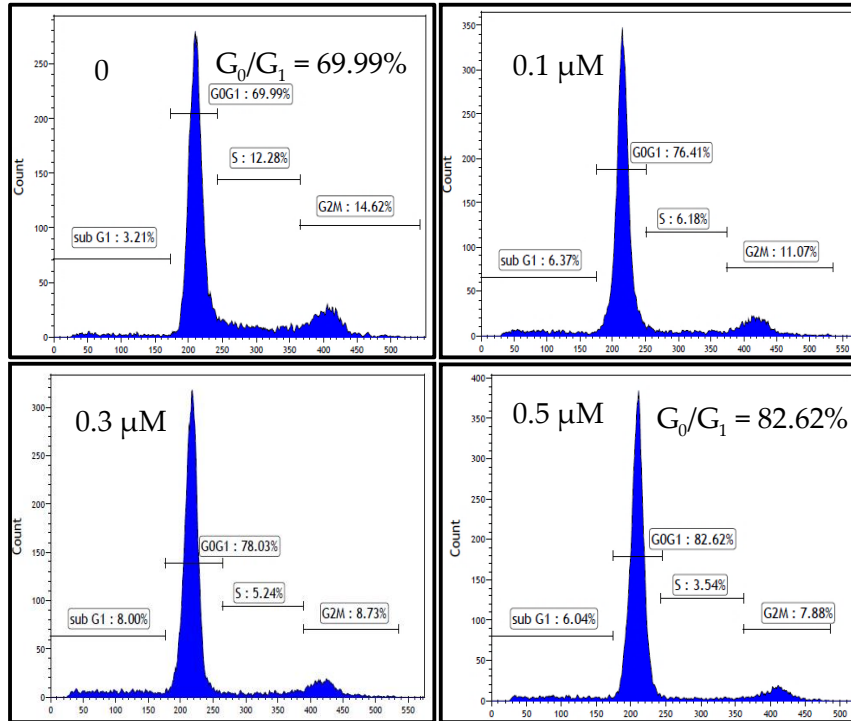
Figure S1. Cell Cycle Distribution Raw Data



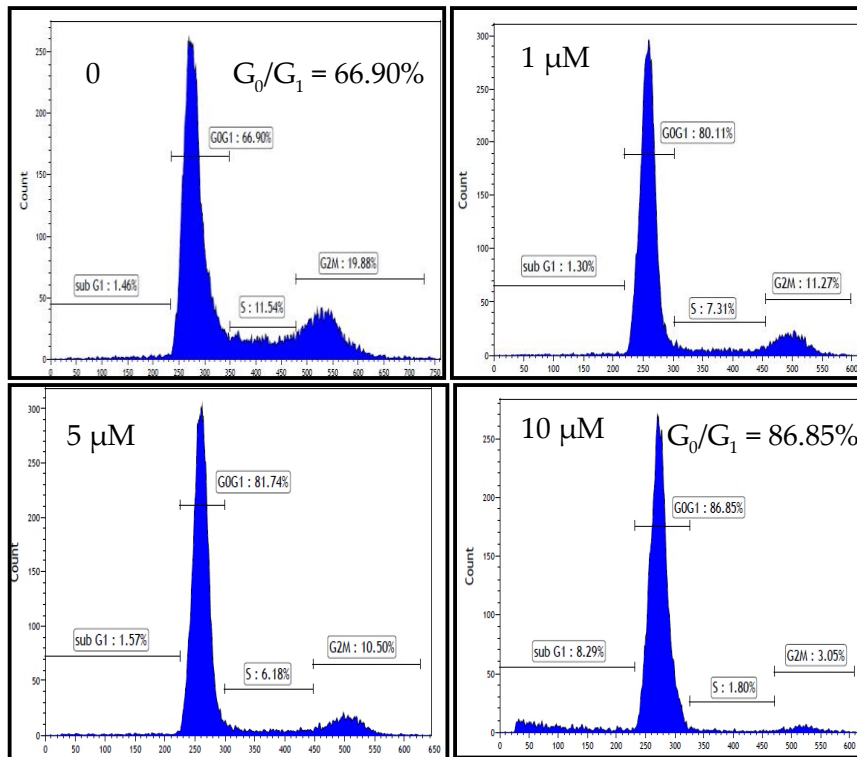
A. HSC-3, Cerivastatin 48 h



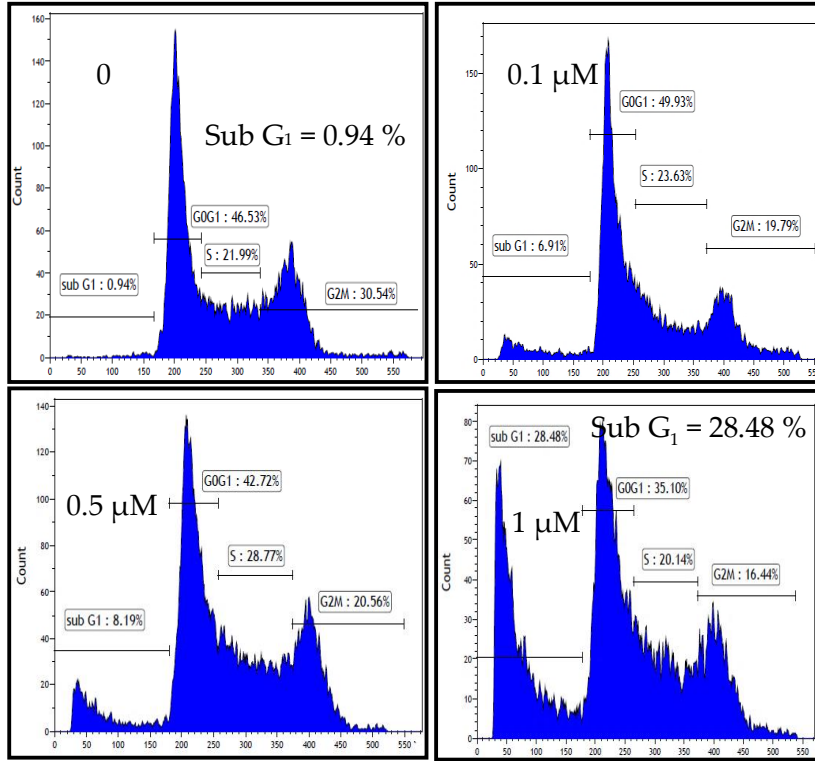
B. HSC-3, Simvastatin 48 h



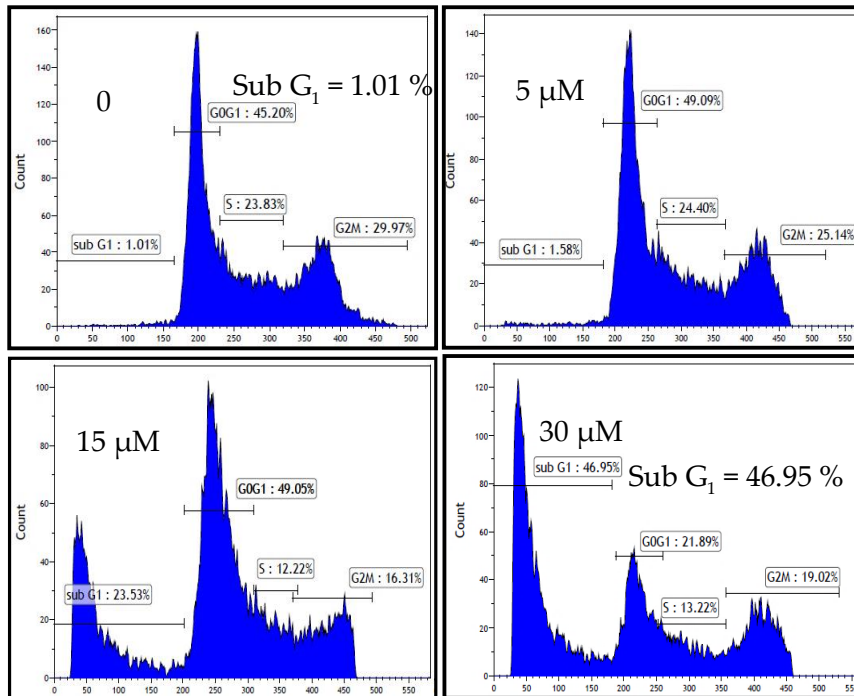
C. OECM-1, Cerivastatin 48 h



D. OECM-1, Simvastatin 48 h



E. SAS, Cerivastatin 48 h



F. SAS, Simvastatin 48 h

Figure S1. Cell cycle distribution raw data. The percentages of cancer cells in the G₂/M, S, G₀/G₁, and Sub G₁ phases were analyzed using flow cytometry as shown for HSC-3 (A-B), OECM-1 (C-D), and SAS (E-F).

Figure S2. Western Blotting Quantification of p21

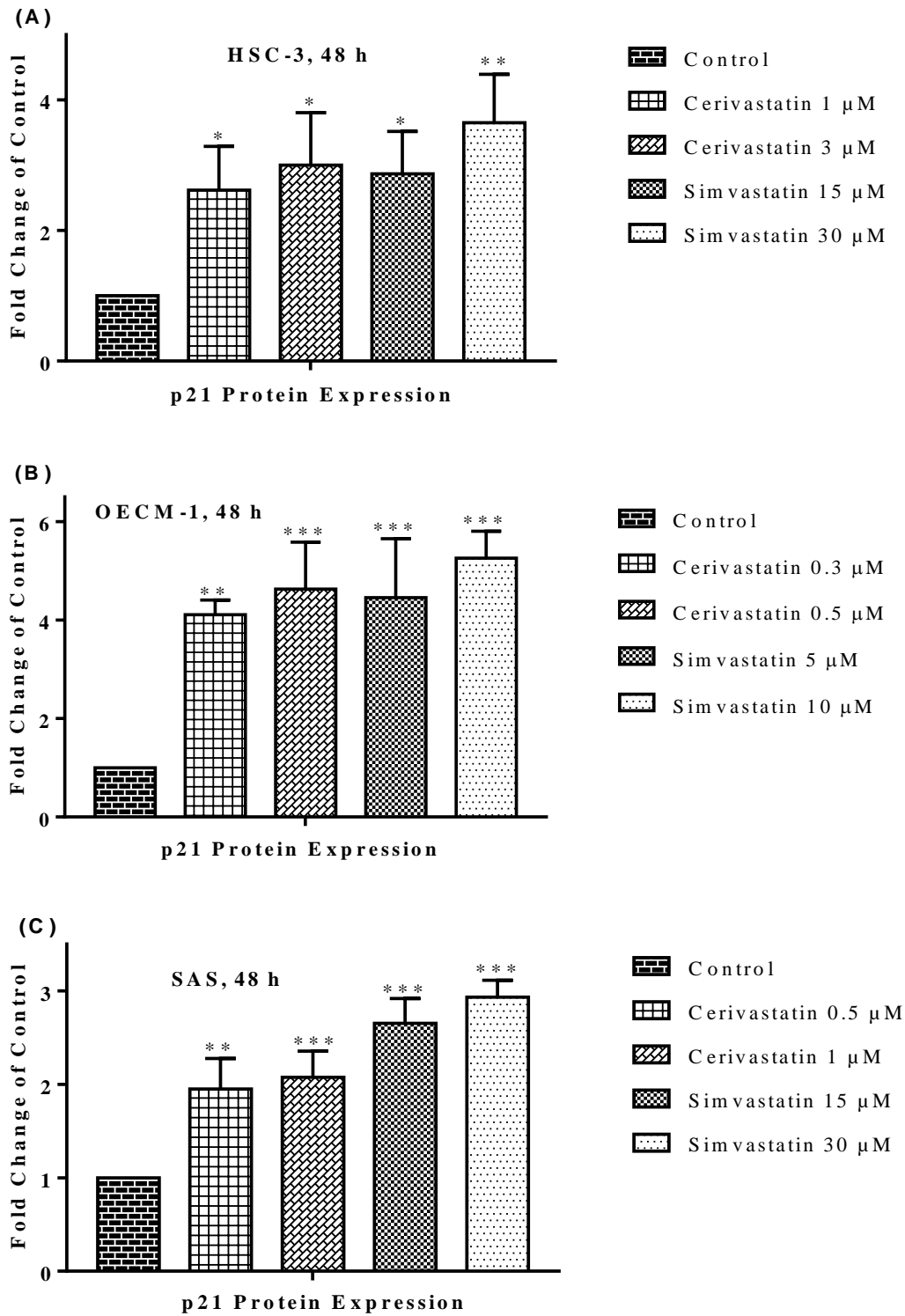


Figure S2. Western blotting quantification of p21. Protein expression of p21 was shown for HSC-3 (A), OECM-1 (B), and SAS (C). Error bars represent mean \pm SEM from at least 3 independent biological replicates. P values were determined using one-way ANOVA and Dunnett's multiple comparison test ($P < 0.05$, $**P < 0.01$, $***P < 0.001$).

Figure S3. Western Blotting Quantification of CDKs

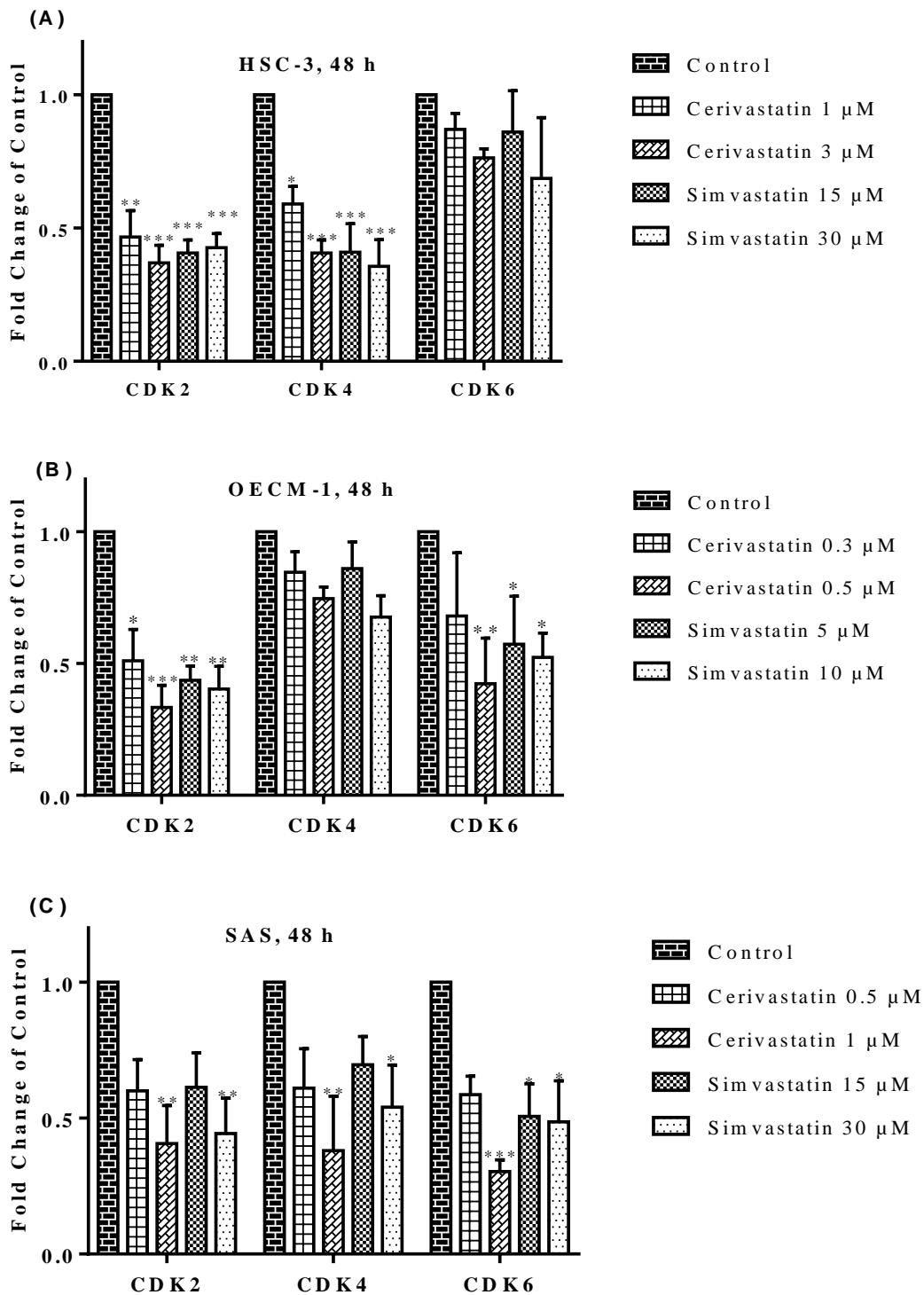


Figure S3. Western blotting quantification of CDKs. Protein expression of CDKs was shown for HSC-3 (A), OECM-1 (B), and SAS (C). Error bars represent mean \pm SEM from at least 3 independent biological replicates. *P* values were determined using two-way ANOVA and Dunnett's multiple comparison test (**P* < 0.05, ***P* < 0.01, ****P* < 0.001).

Figure S4. Western Blotting Quantification of DNMT1 and p21

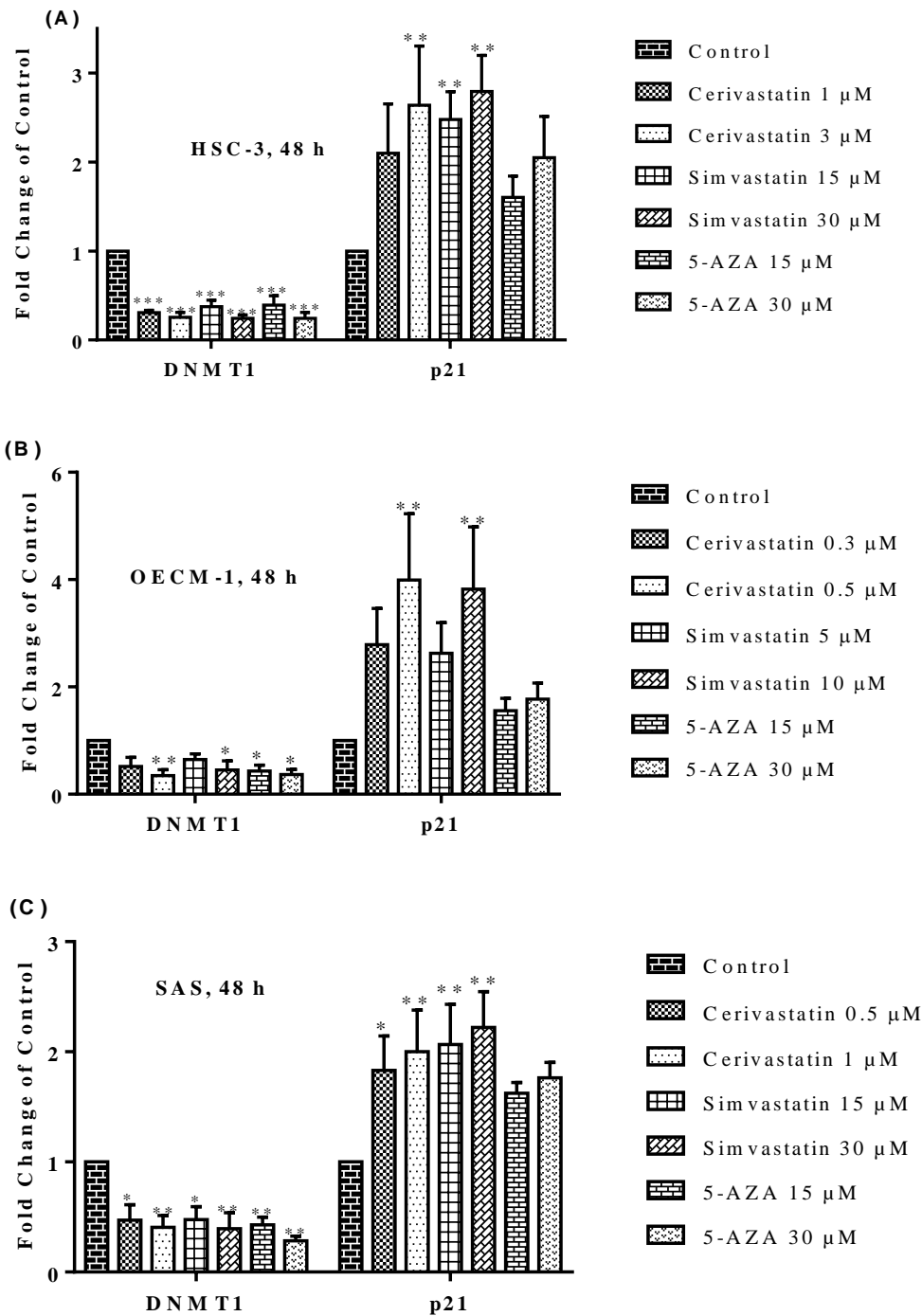
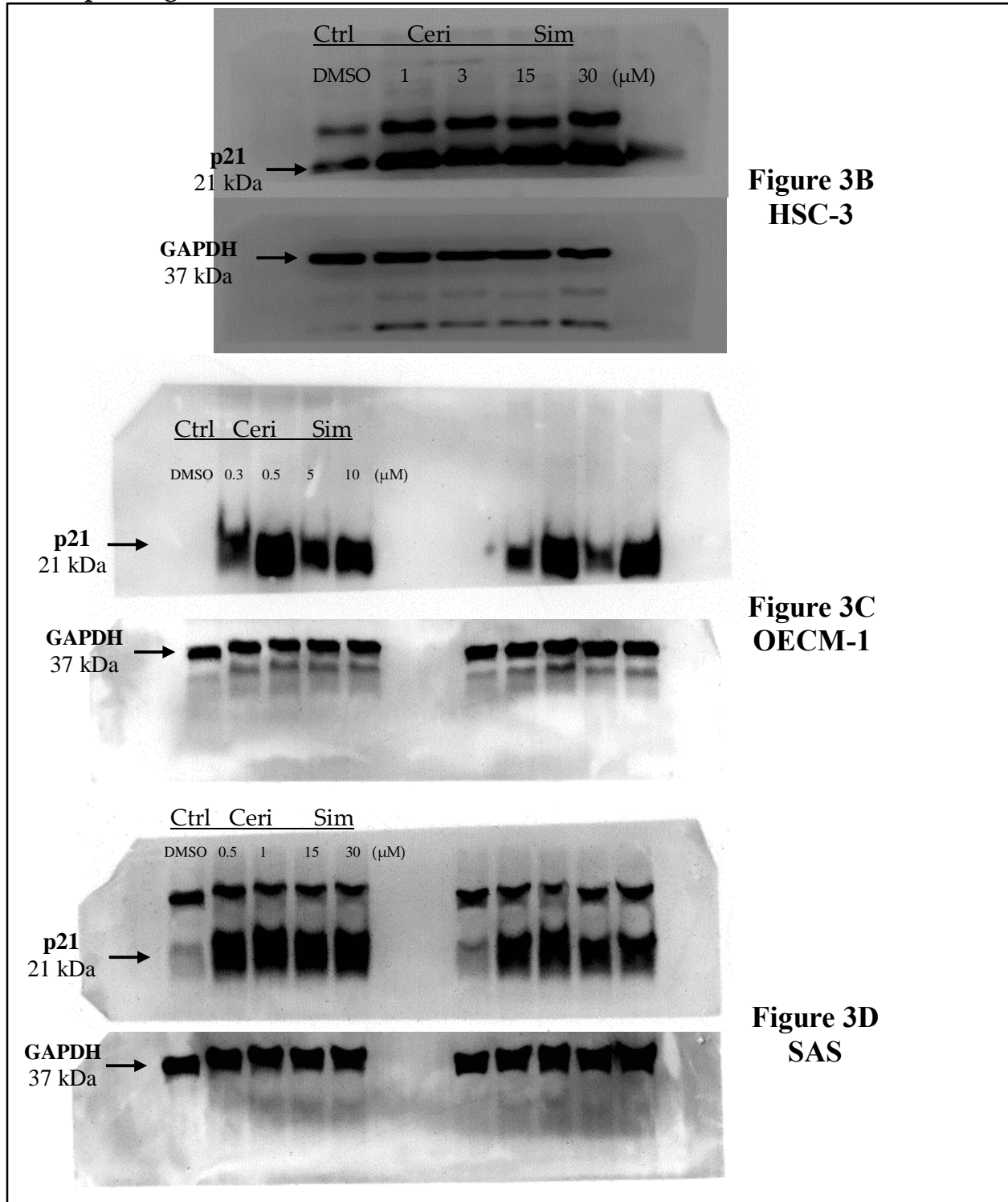


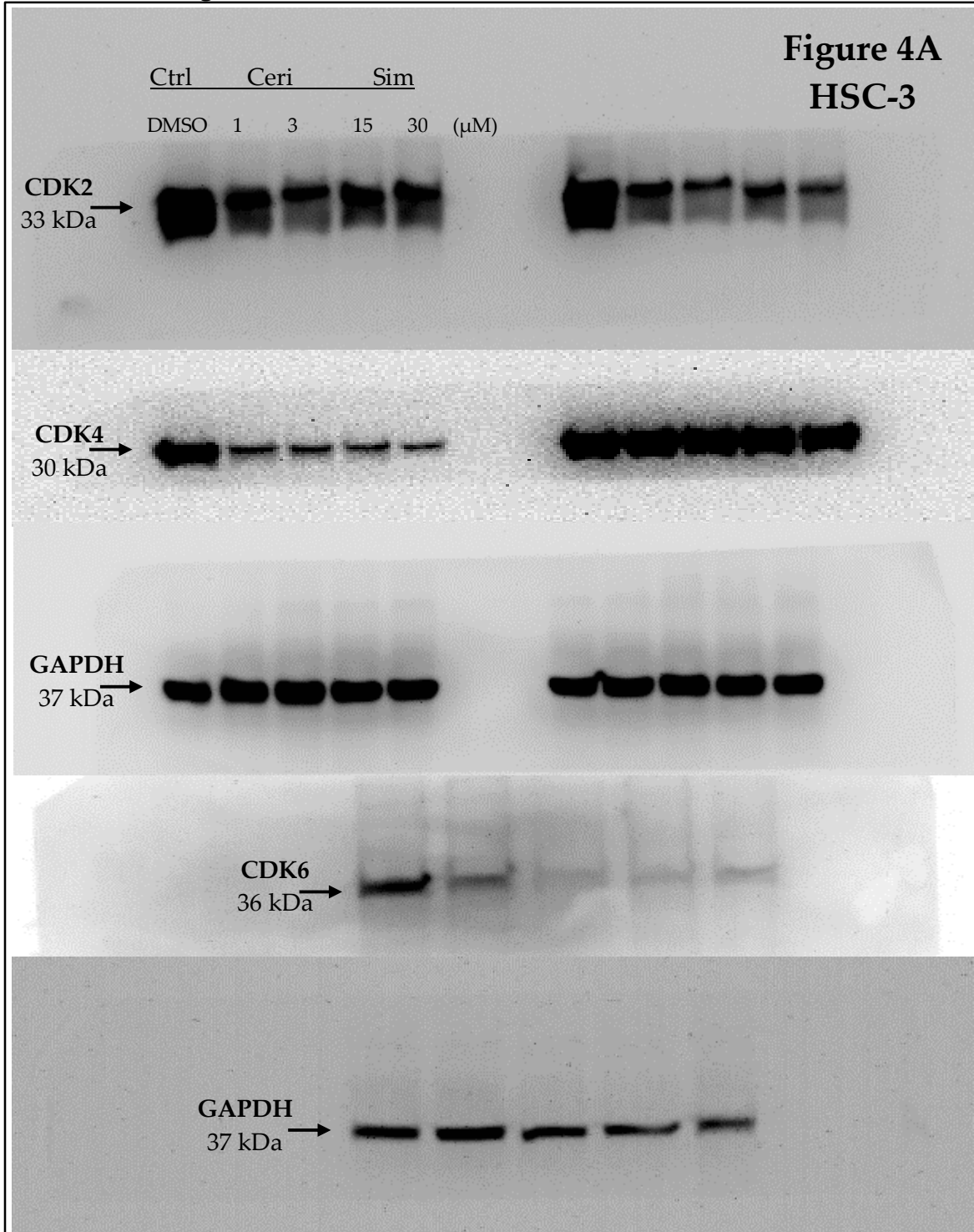
Figure S4. Western blotting quantification of DNMT1 and p21. The protein expression of DNMT1 and p21 was shown for HSC-3 (A), OECM-1 (B), and SAS (C). Error bars represent mean \pm SEM from at least 3 independent biological replicates. *P* values were determined using two-way ANOVA and Dunnett's multiple comparison test (**P* < 0.05, ***P* < 0.01, ****P* < 0.001).

Figure S5. Original Images for Western Blotting

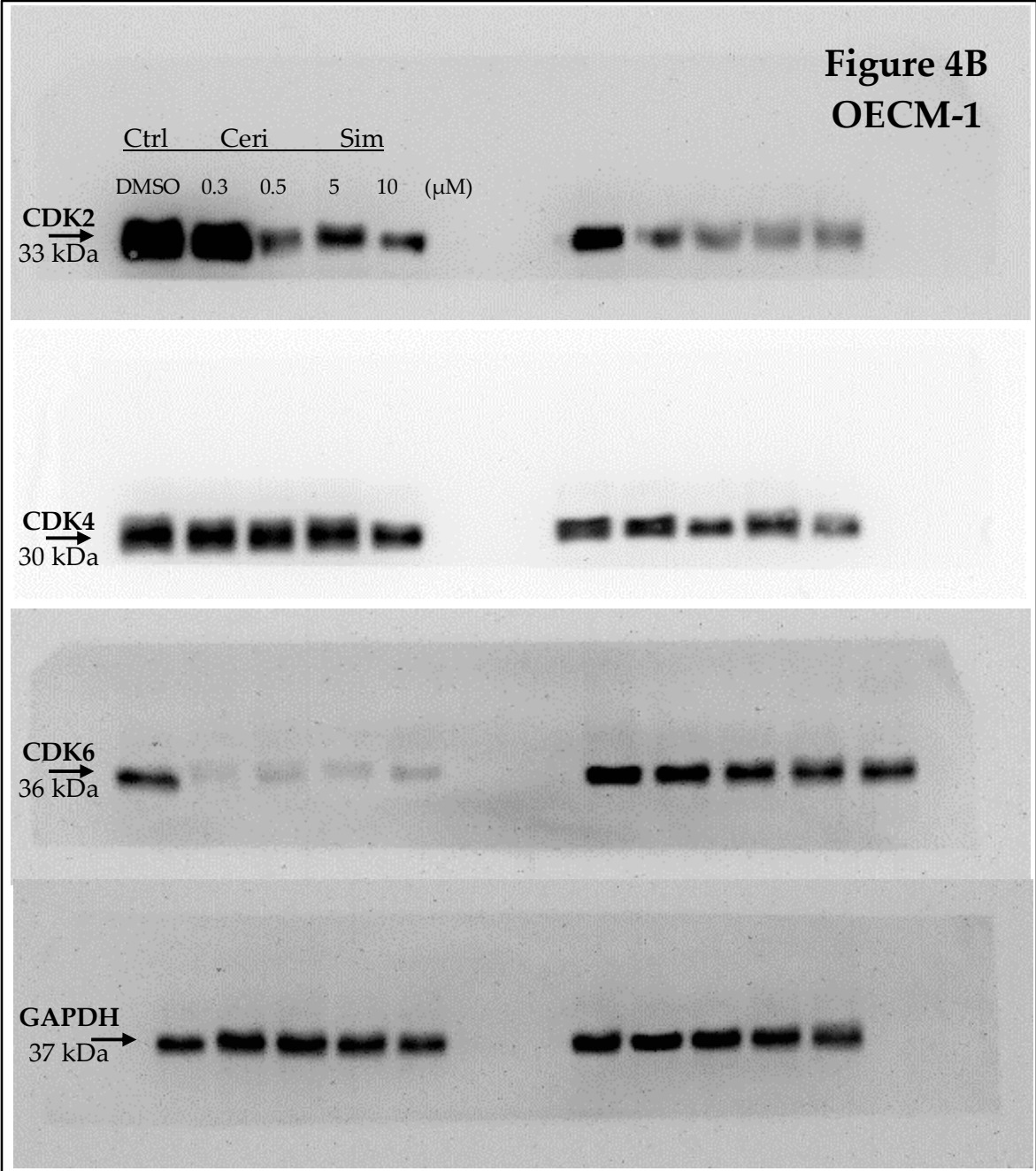
1. p21 (Figure 3)



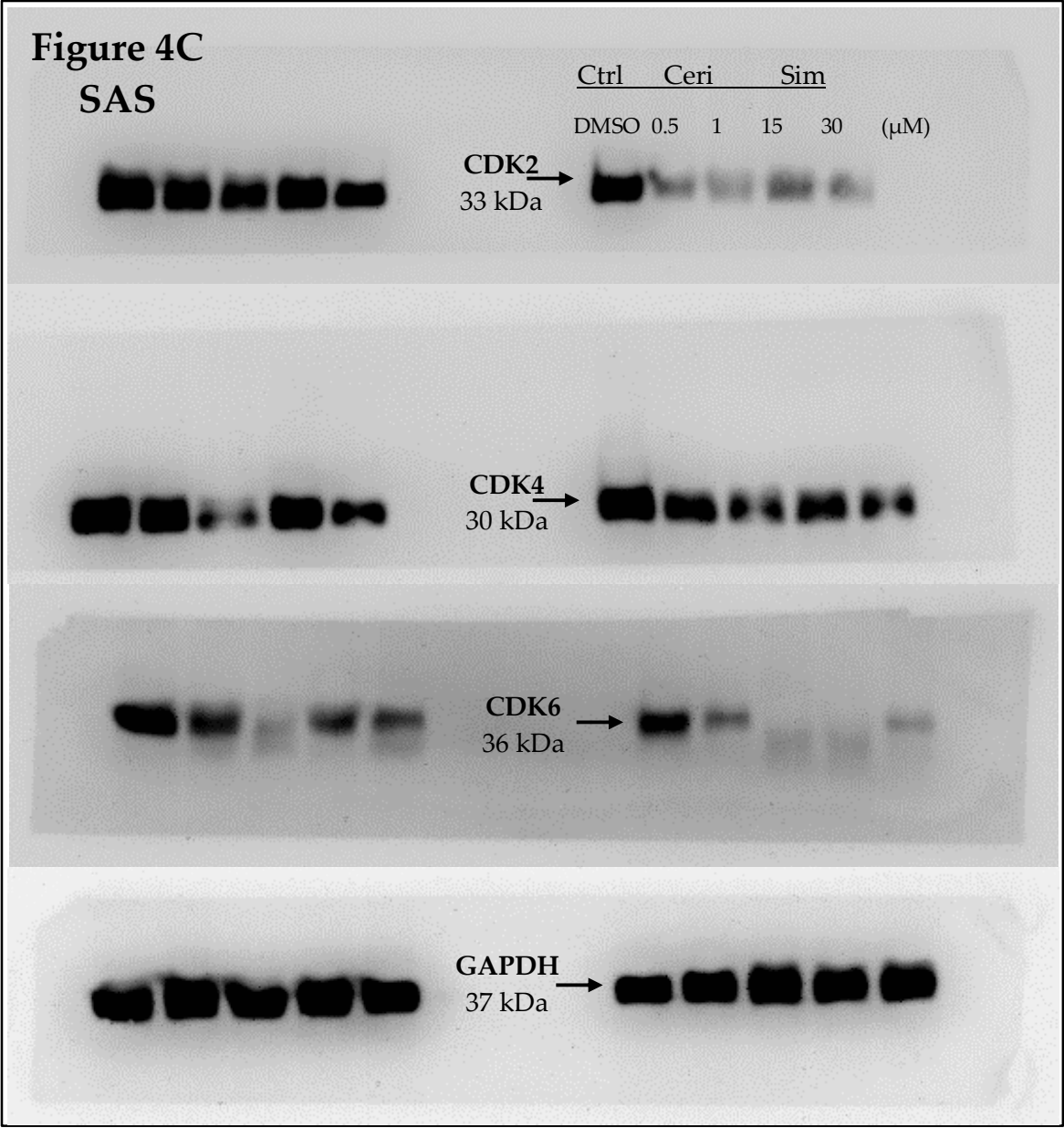
2. CDKs (Figure 4)



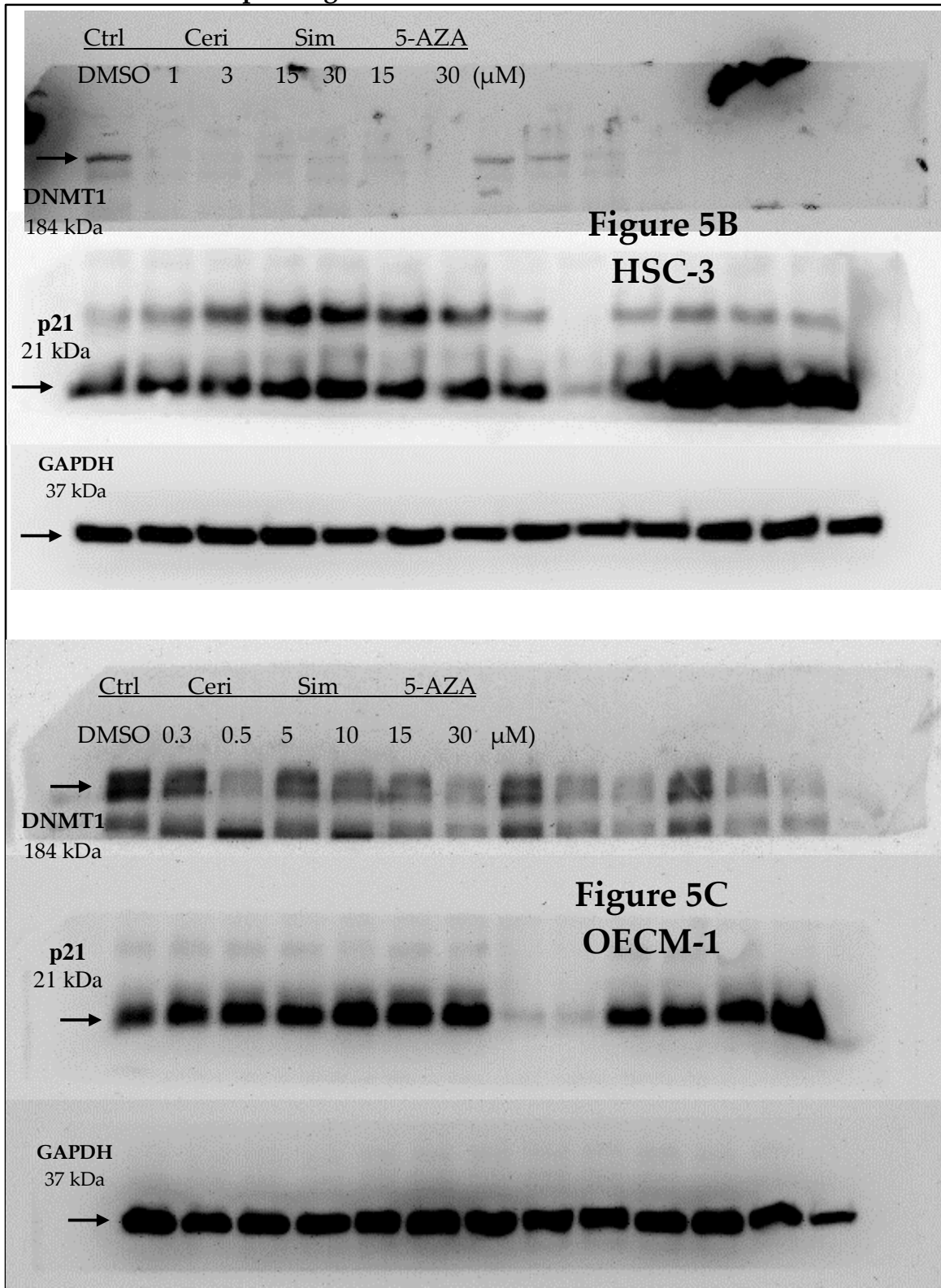
CDKs (Figure 4)...



CDKs (Figure 4)...



3. DNMT1 and p21 (Figure 5)



DNMT1 and p21 (Figure 5)...

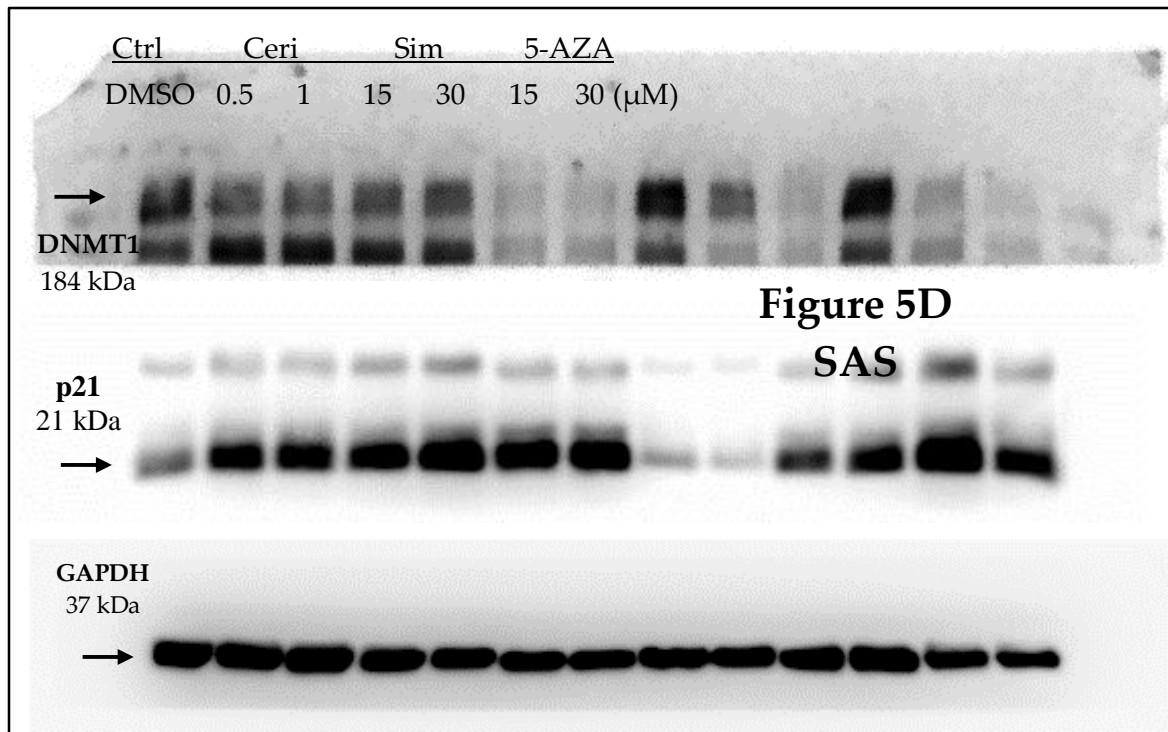


Figure S5. Original images for Western Blotting. The original images for Western blotting were shown for p21 (A), CDKs (B), and DNMT1-p21 (C).