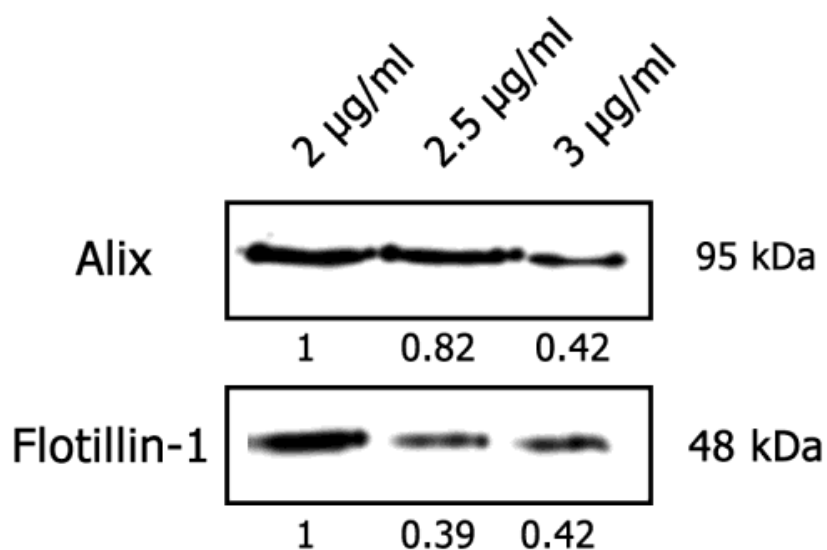
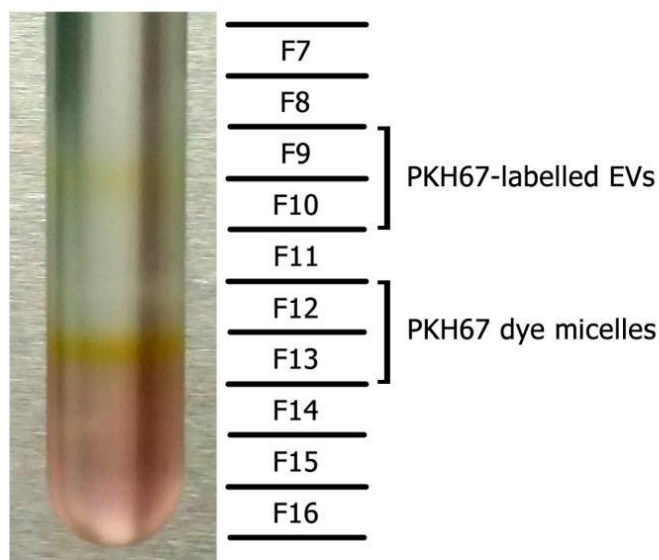


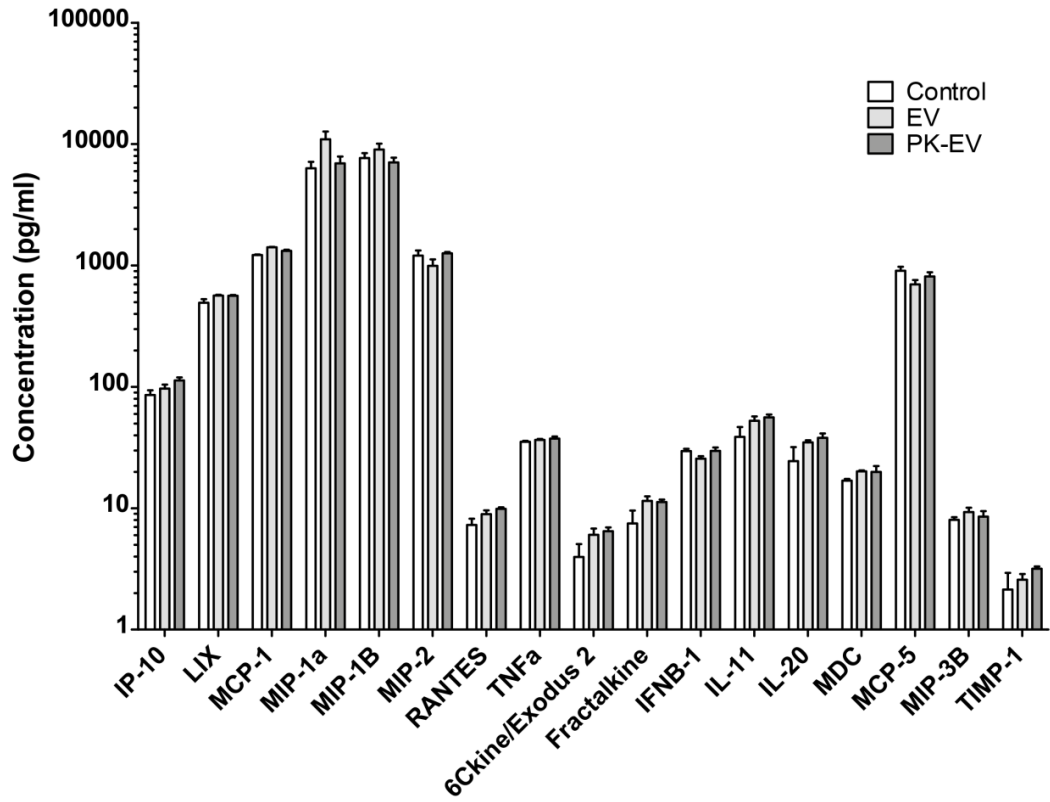
Supplementary Information



**Figure S1.** Effect of increasing concentrations of Proteinase K on the stability of 32 intraluminal markers Alix and Flotillin-1. Equal particle numbers were loaded. Band 33 intensities were quantified using ImageJ.

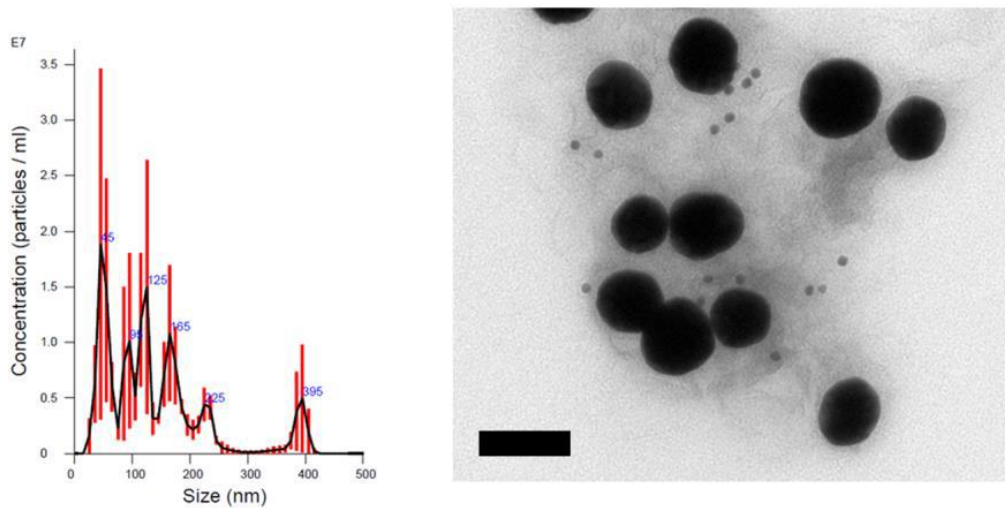


**Figure S2.** Visible PKH67 dye micelles in fractions 12-13 after bottom-up iodixanol 36 density gradient centrifugation. PKH67 membrane-labelled EV are also observed in 37 fractions 9-10.

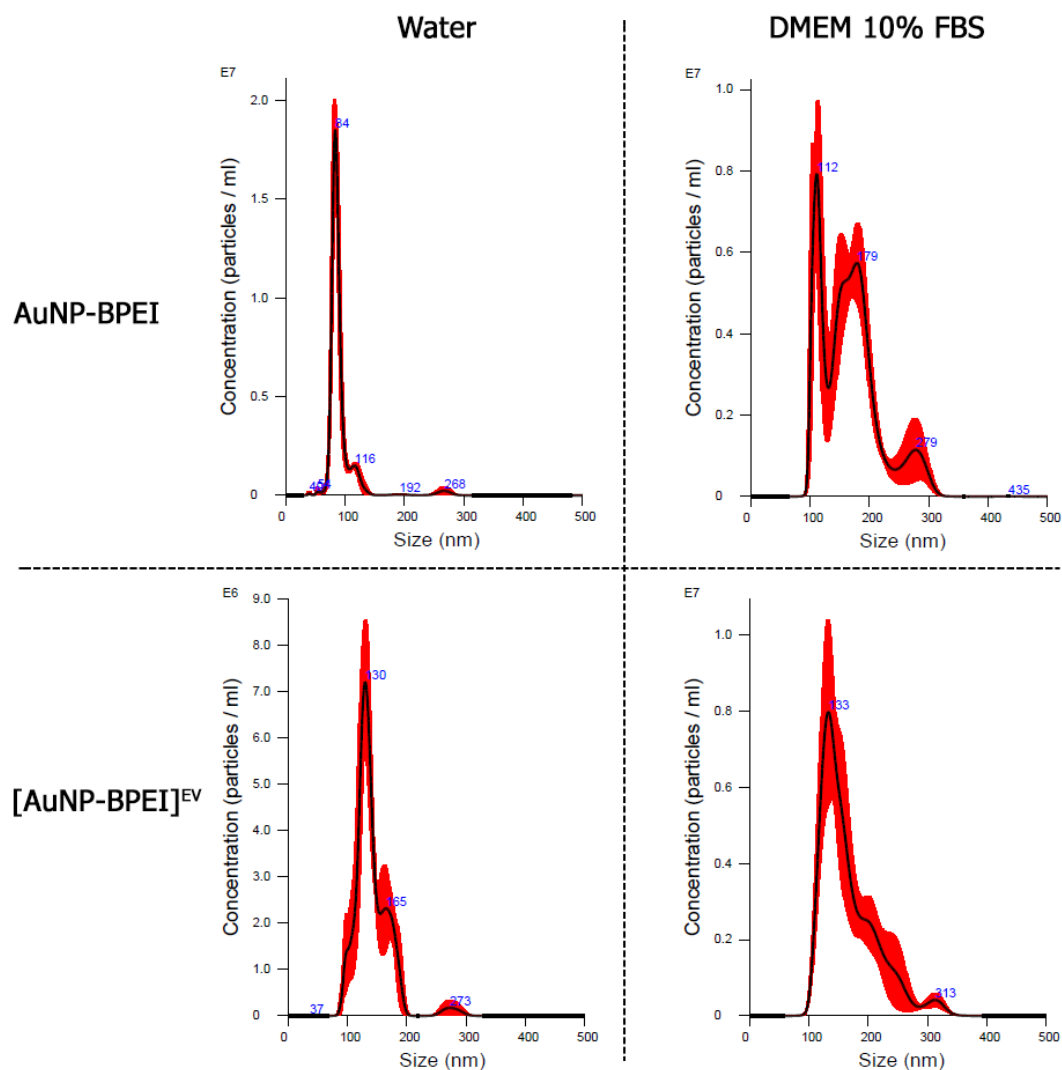


**Figure S3.** Concentration of indicated cytokines and chemokines in supernatant of J774A1 41 macrophages after 16h stimulation with control medium versus medium containing EV or 42 PK-EV. Mean concentrations are shown with standard error.

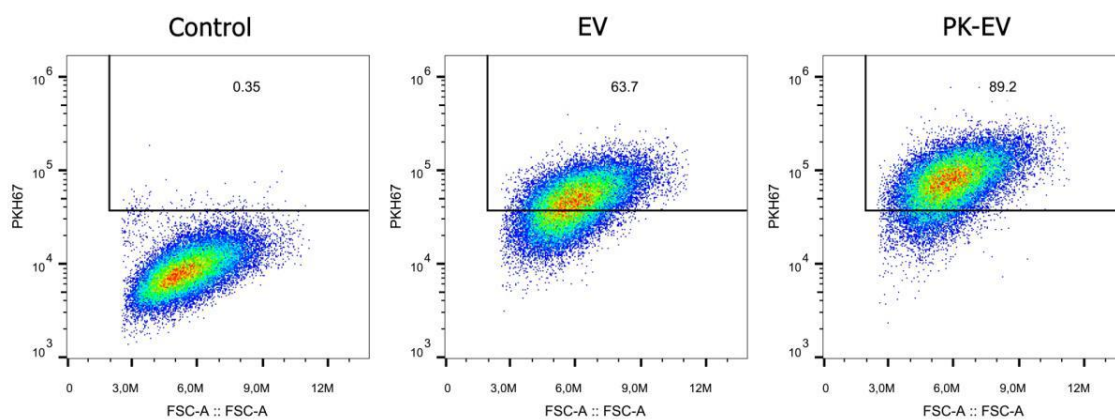
**AuNP-BPEI + 4T1 EV mixed**



**Figure S4.** Representative NTA size distribution and CD9 immunoelectron image of 46 AuNP-BPEI mixed with 4T1 EV. Scale bar: 100 nm.



**Figure S5.** NTA size distributions of AuNP-BPEI and [AuNP-BPEI]<sup>EV</sup> suspended in water 51 or 10% FBS-containing DMEM.



**Figure S6.** Representative flow cytometry scatter plots of J774A1 cells after 16h incubation 55 with PKH67 membrane-labelled EV or PK-EV. Gating and percentage of PKH67 positive 56 cells are indicated.