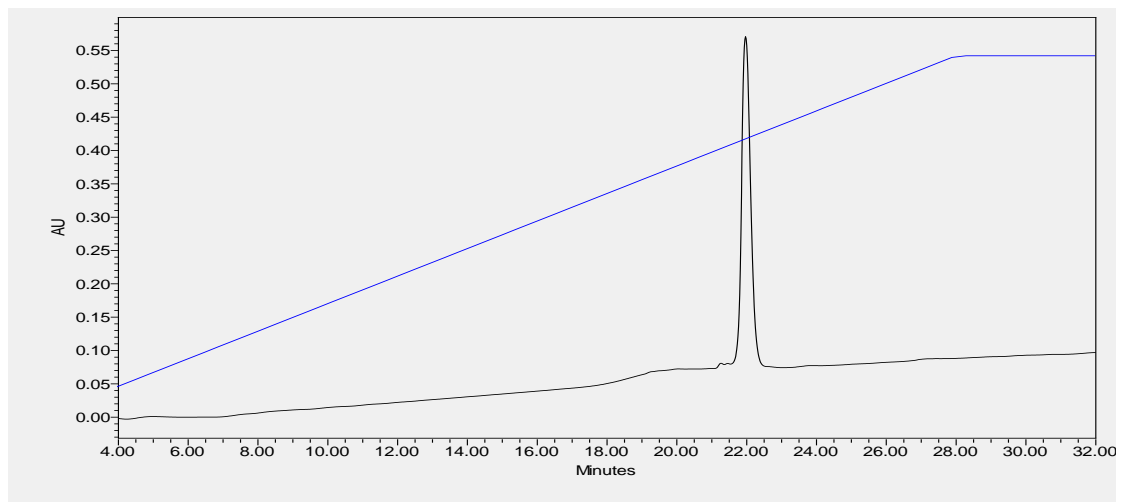
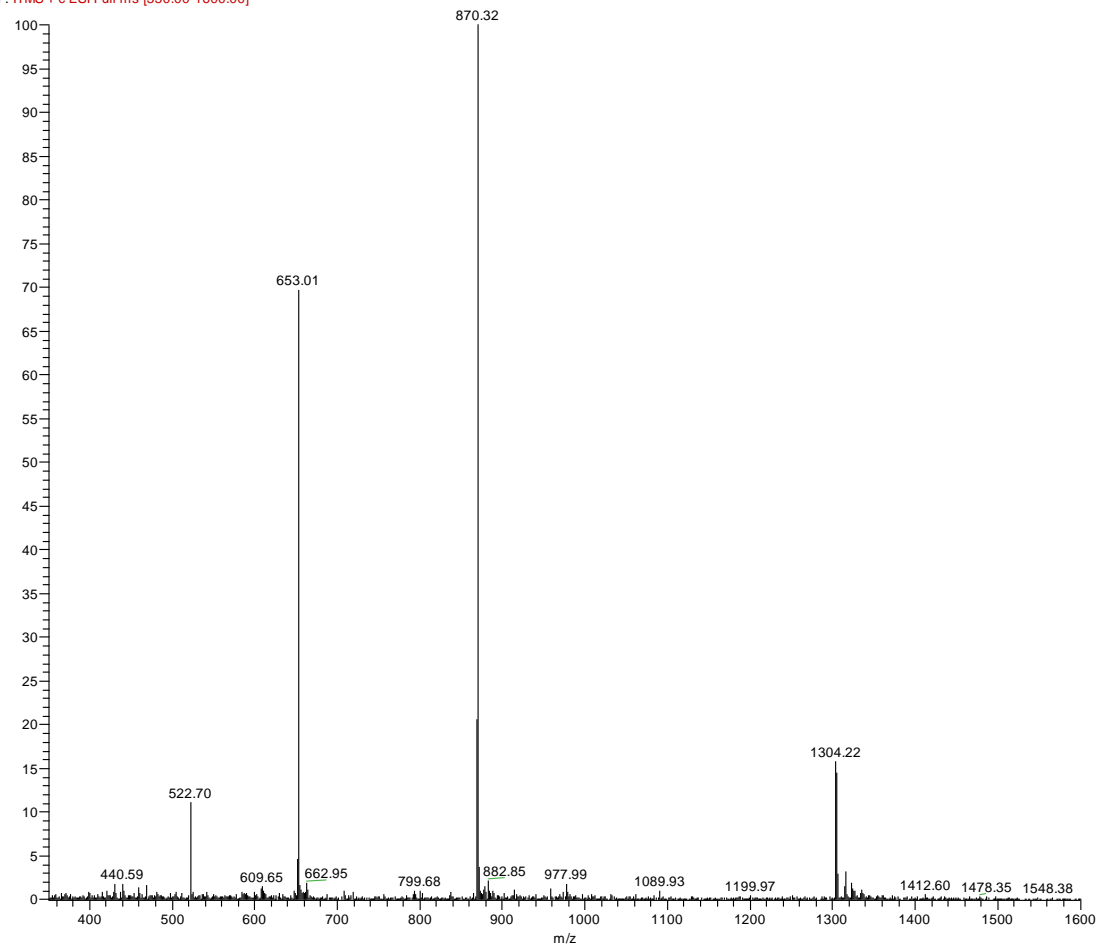
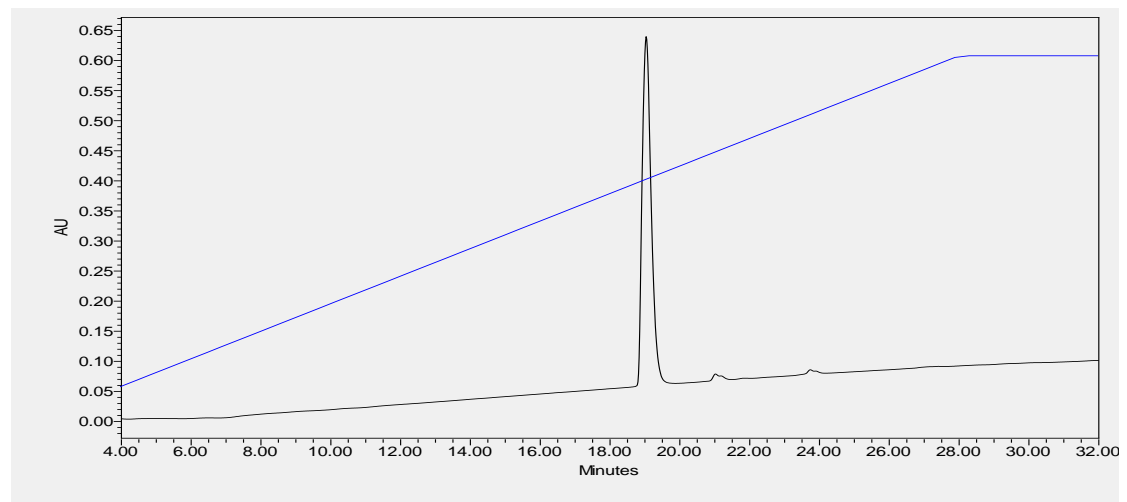
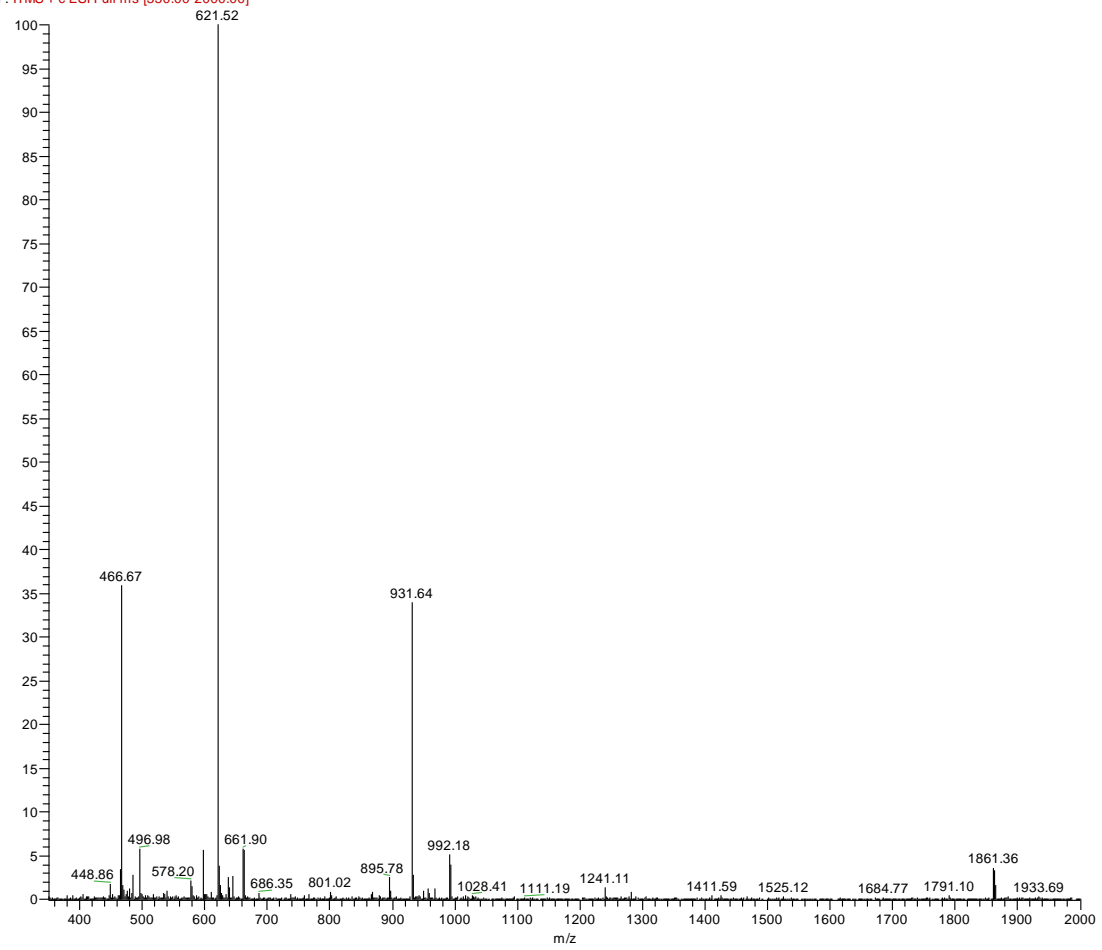


hhy_200730154328 #984 RT: 12.53 AV: 1 NL: 8.42E3
F: ITMS + c ESI Full ms [350.00-1600.00]



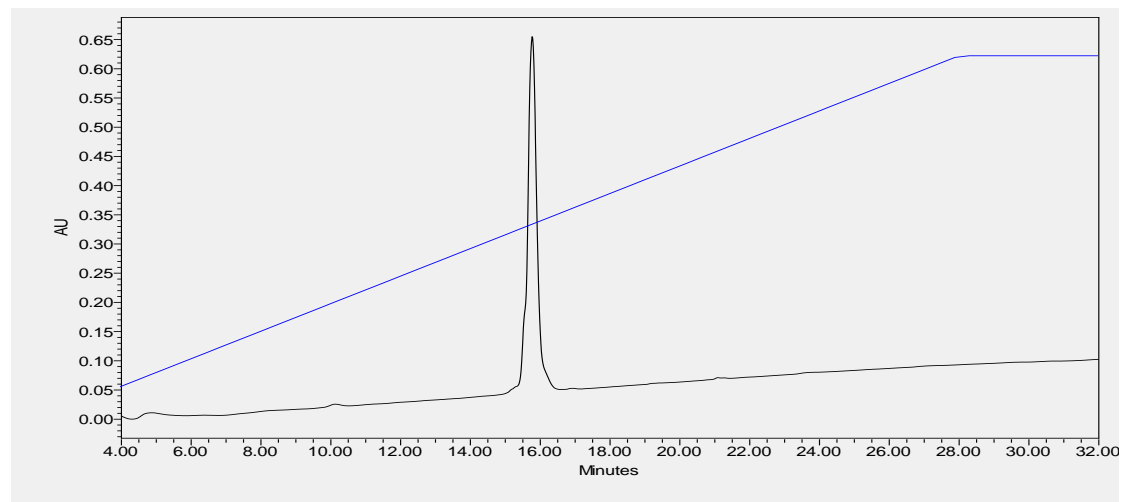
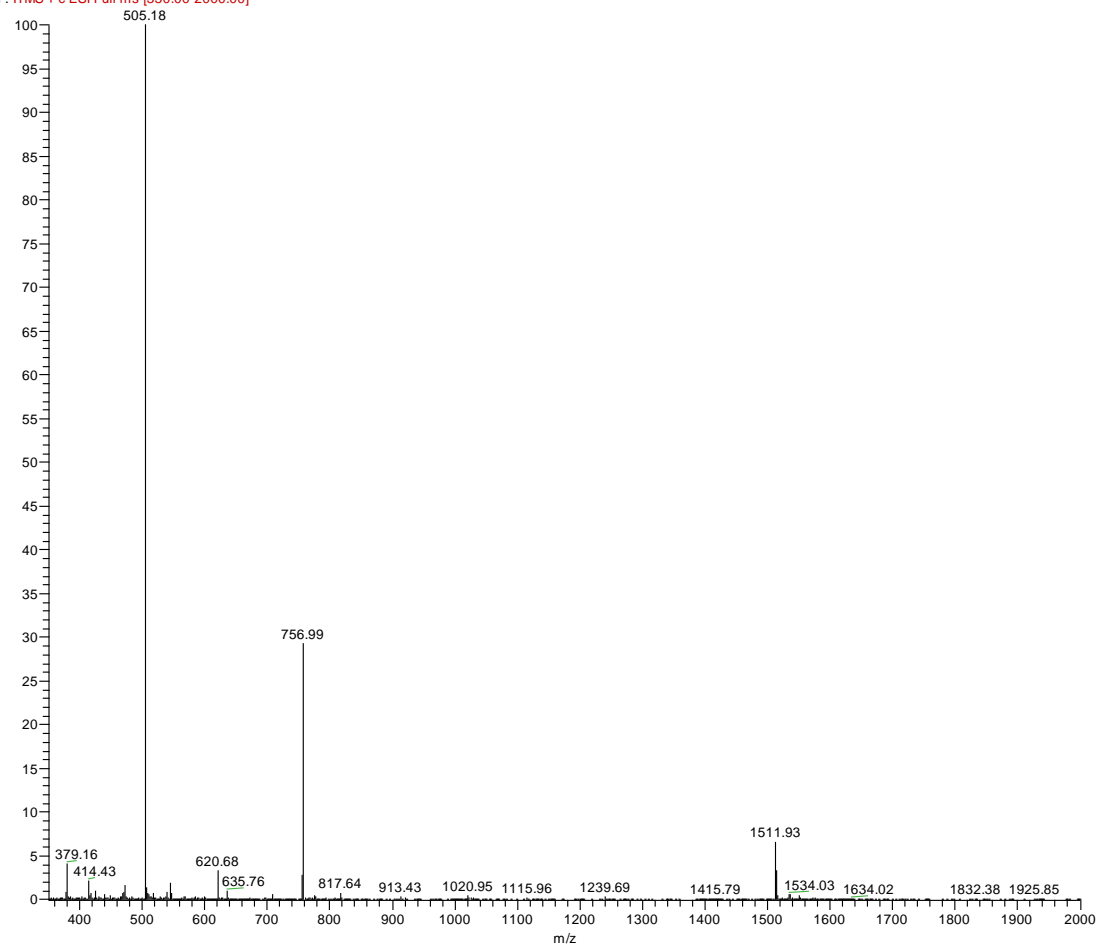
(a)

hhy_200730184524 #62 RT: 0.85 AV: 1 NL: 4.51E4
F: ITMS + c ESI Full ms [350.00-2000.00]



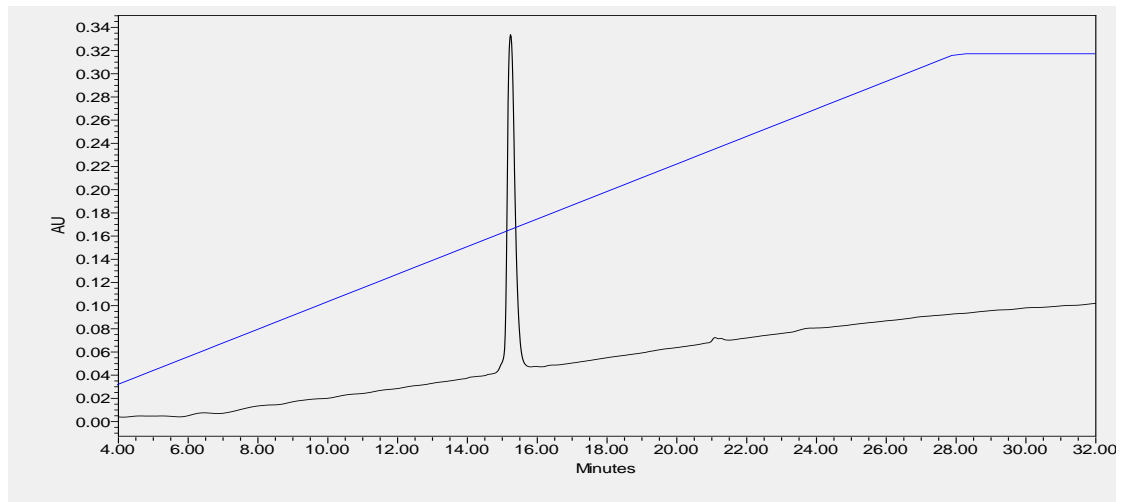
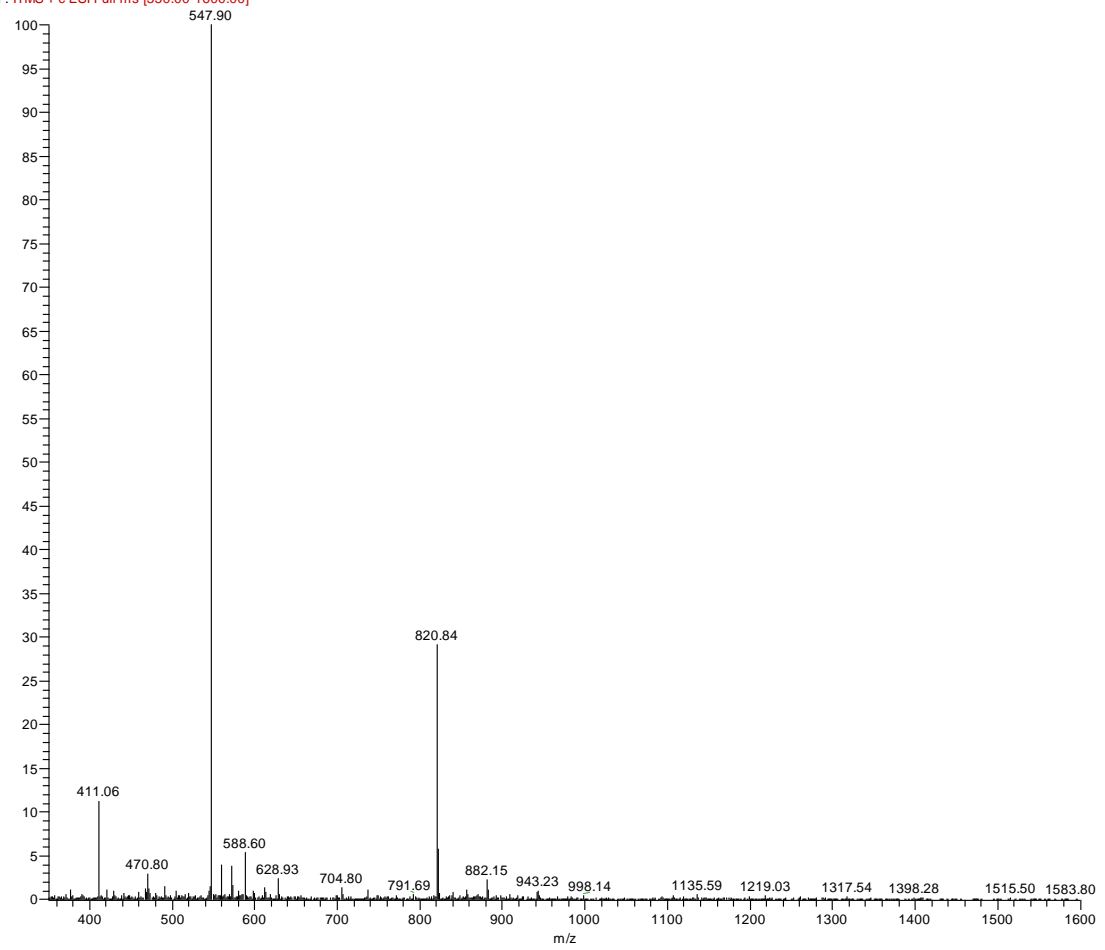
(b)

hhy_200730185236 #13 RT: 0.17 AV: 1 NL: 5.39E4
F: ITMS + c ESI Full ms [350.00-2000.00]



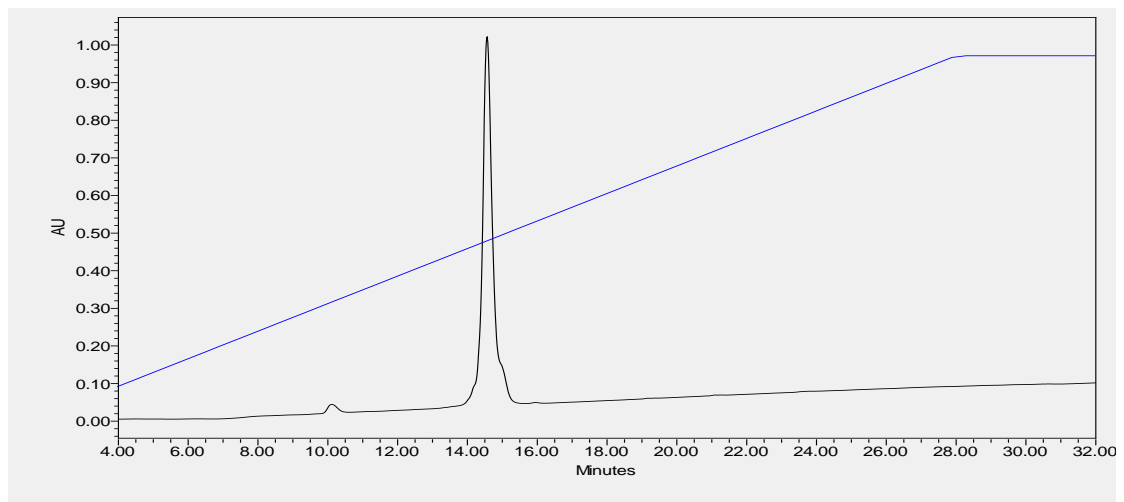
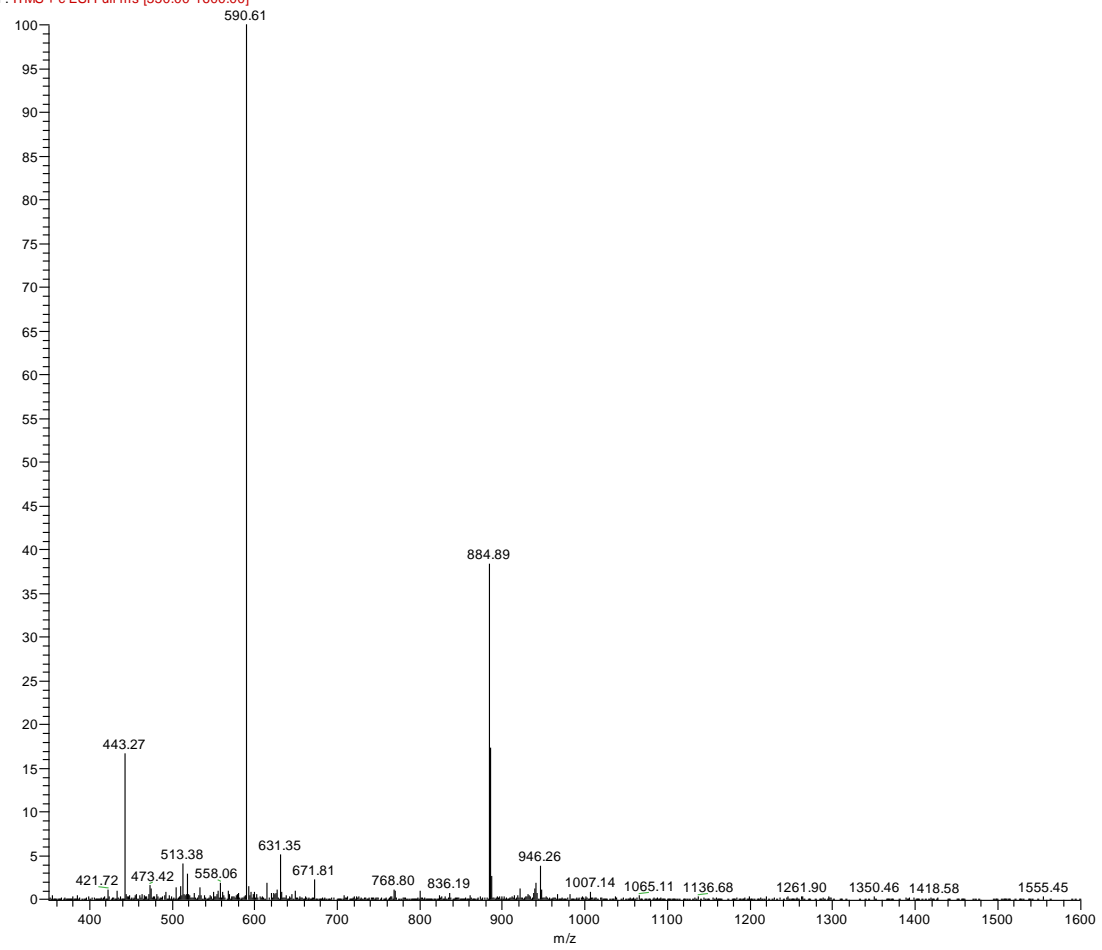
(c)

hhy_200730154328 #368 RT: 4.87 AV: 1 NL: 2.98E4
F: ITMS + c ESI Full ms [350.00-1600.00]



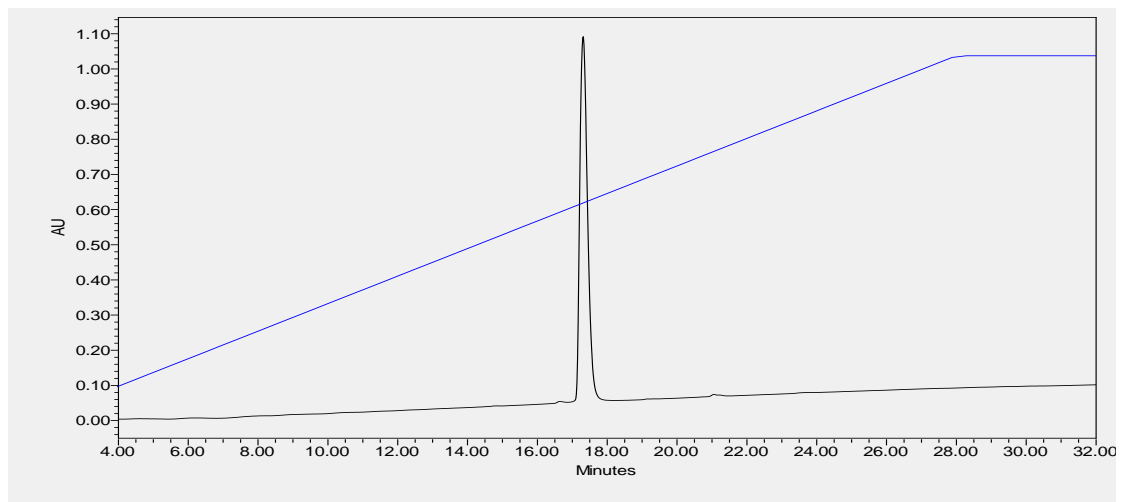
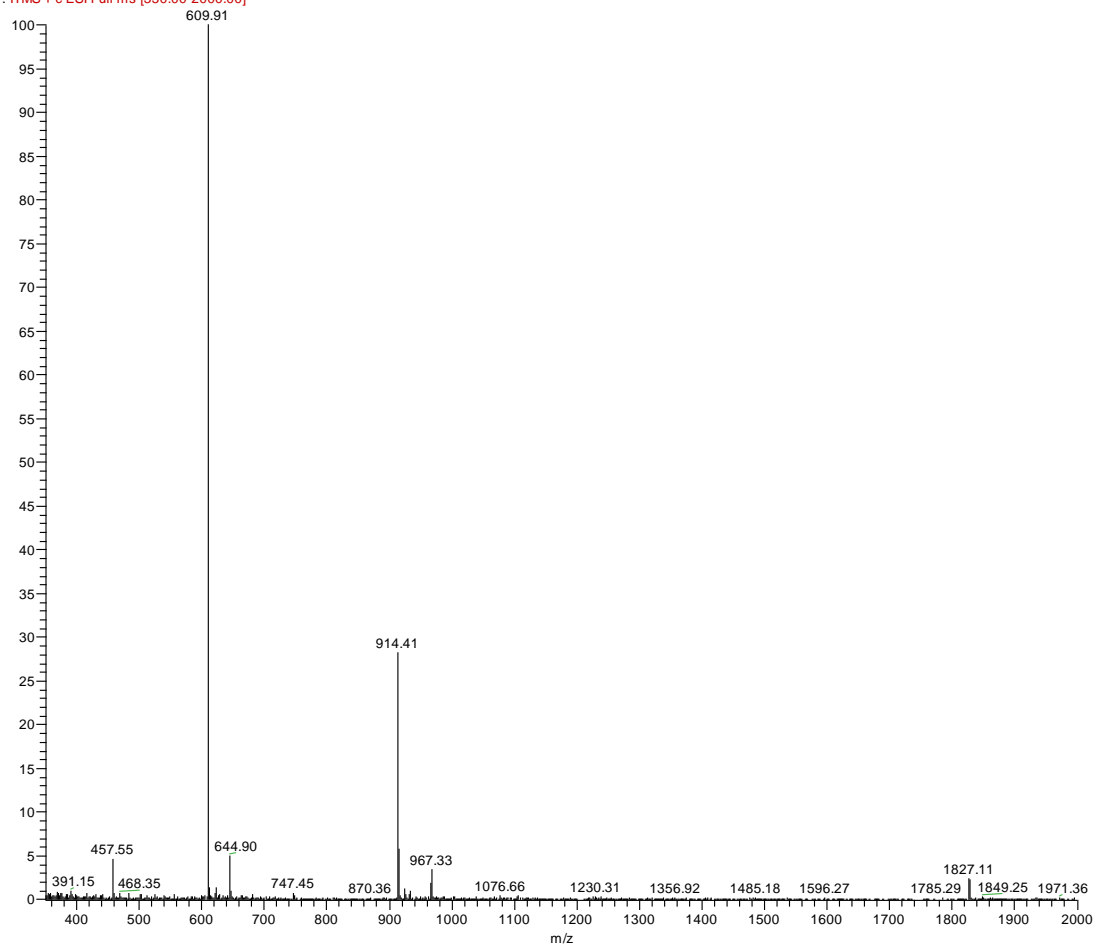
(d)

hhy_200730154328 #412 RT: 5.42 AV: 1 NL: 9.47E4
F: ITMS + c ESI Full ms [350.00-1600.00]



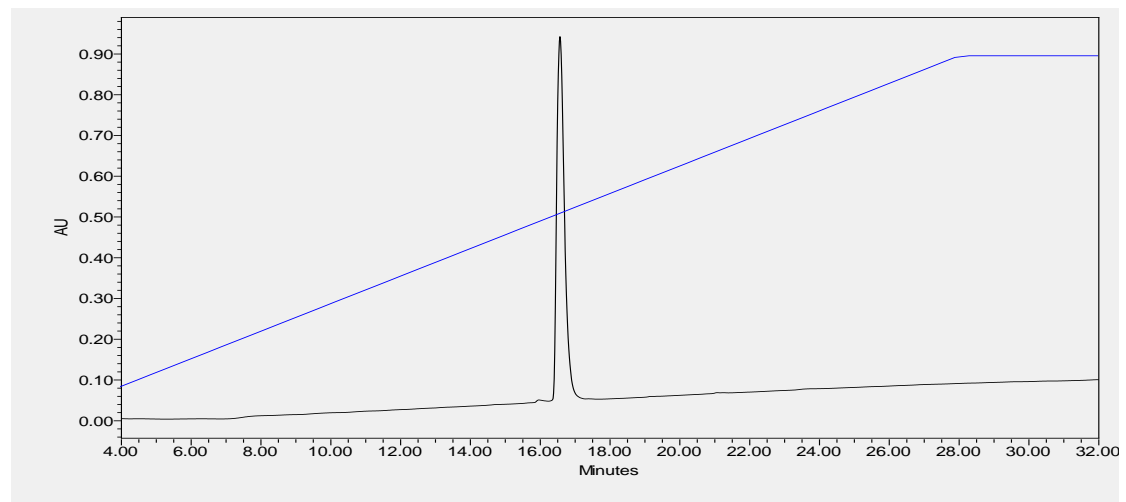
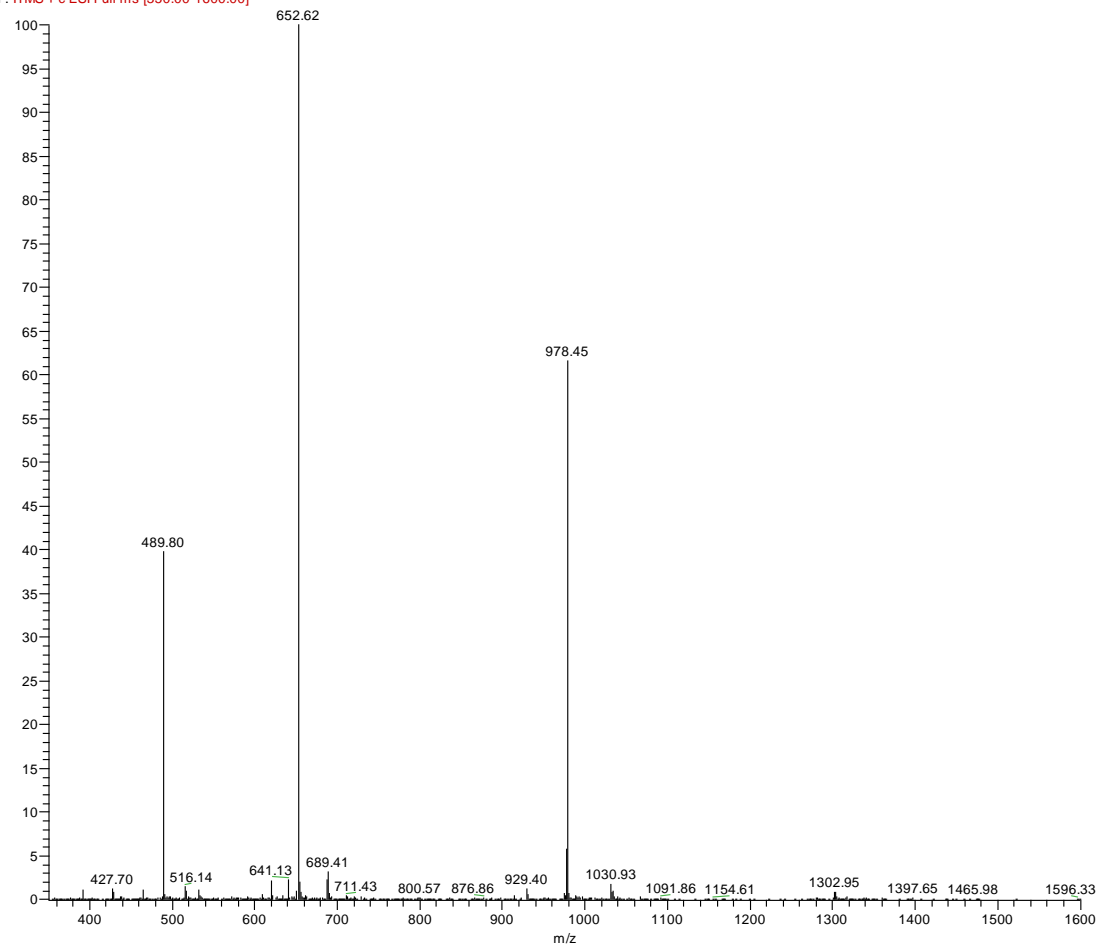
(e)

hhy_200730174137 #27 RT: 0.41 AV: 1 NL: 1.21E4
F: ITMS + c ESI Full ms [350.00-2000.00]



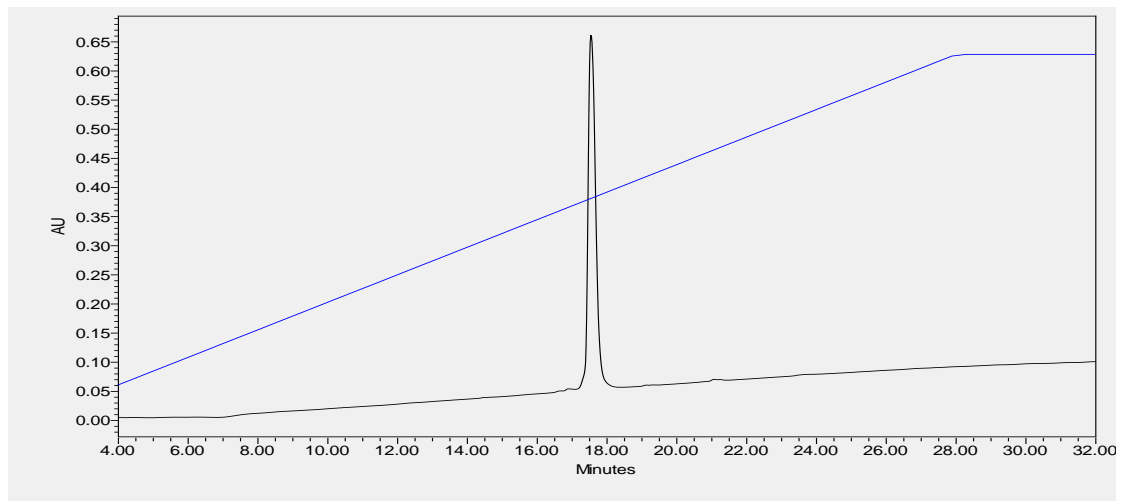
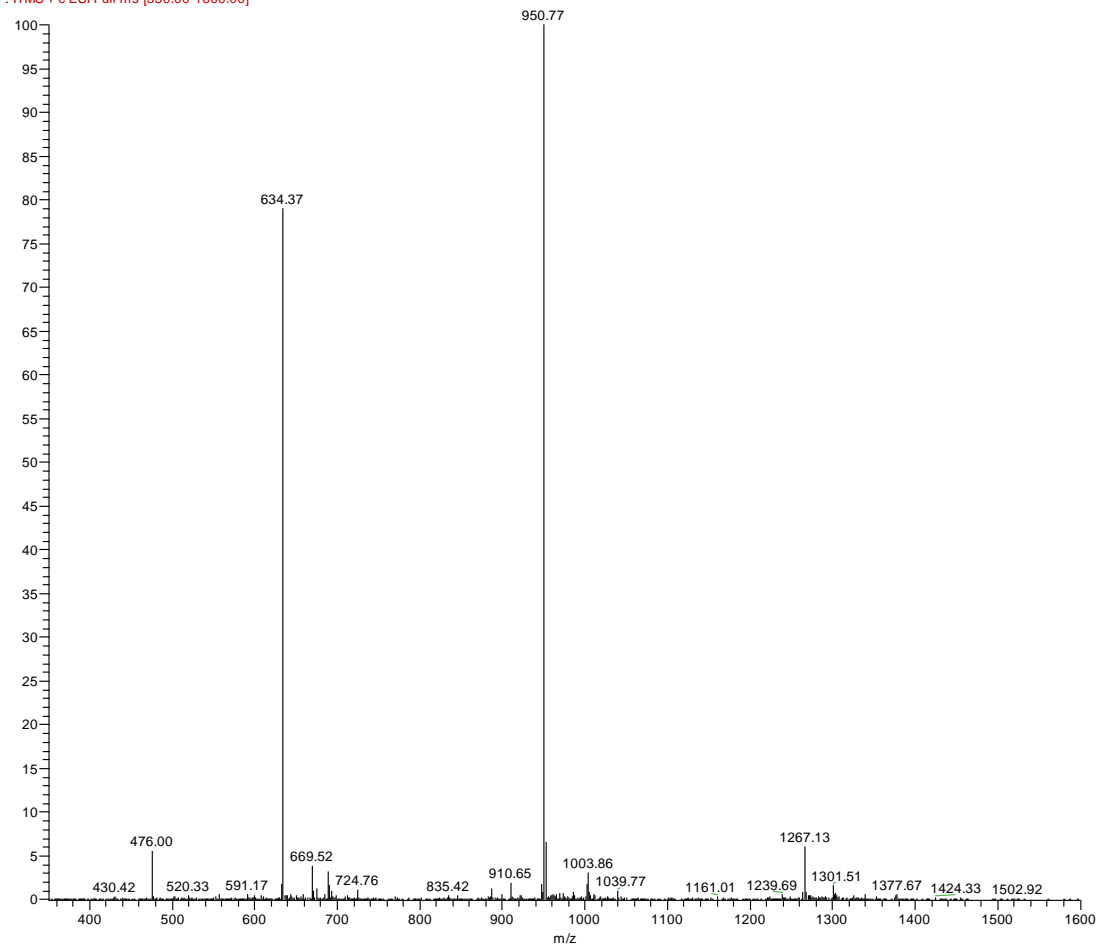
(f)

hhy_200730154328 #567 RT: 7.30 AV: 1 NL: 7.34E4
F: ITMS + c ESI Full ms [350.00-1600.00]



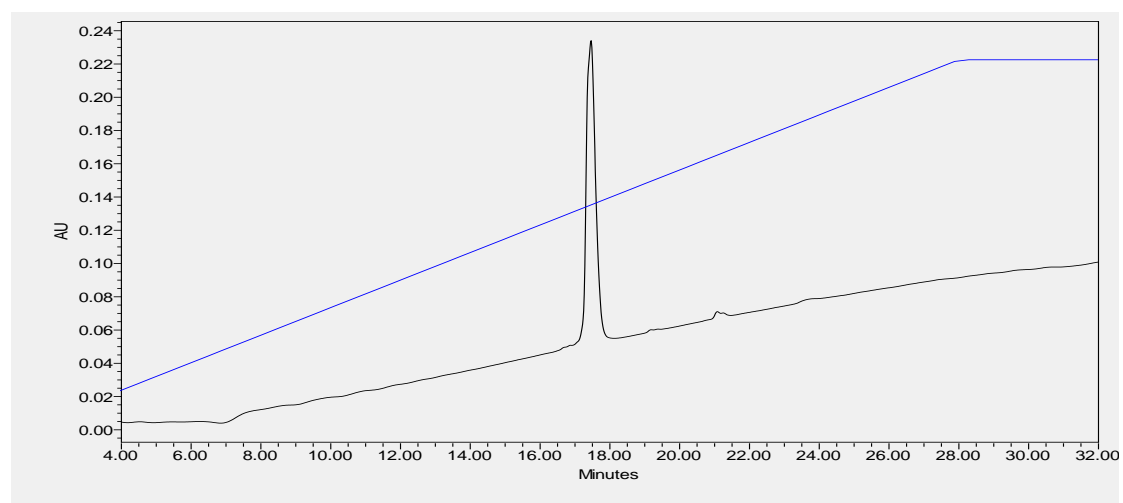
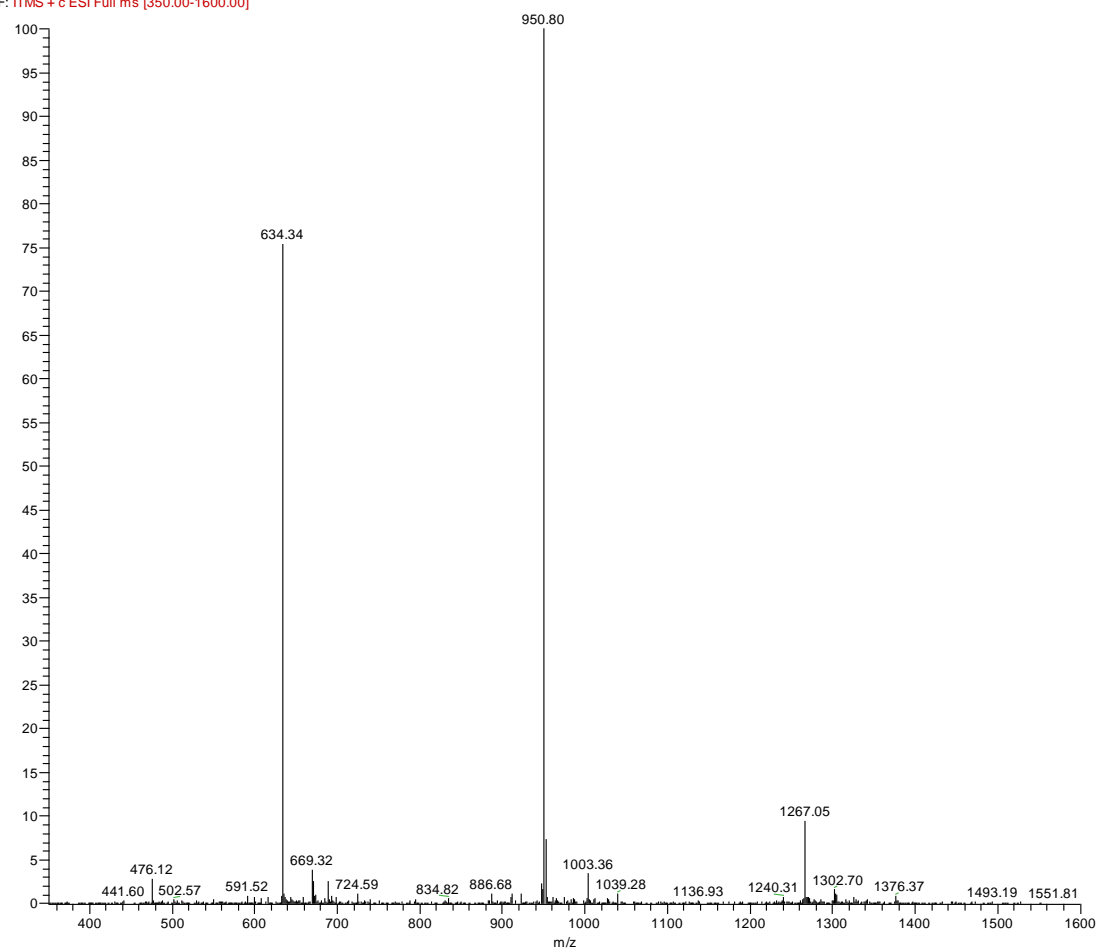
(g)

hhy_200730154328 #753 RT: 9.62 AV: 1 NL: 3.35E4
F: ITMS + c ESI Full ms [350.00-1600.00]



(h)

hhy_200730154328 #756 RT: 9.65 AV: 1 NL: 3.12E4
F: ITMS + c ESI Full ms [350.00-1600.00]



(i)

Figure S1. The RP-HPLC chromatograms and the mass spectra of all the synthetic peptides: B1A(a); B1A1(b); B1A2(c); KB2(d); KKB2(e); KWB2(f); KKWB2(g); KW^{3,5}B2(h); KW^{5,7}B2(i). The gradient of acetonitrile is indicated by the blue line.