

Article

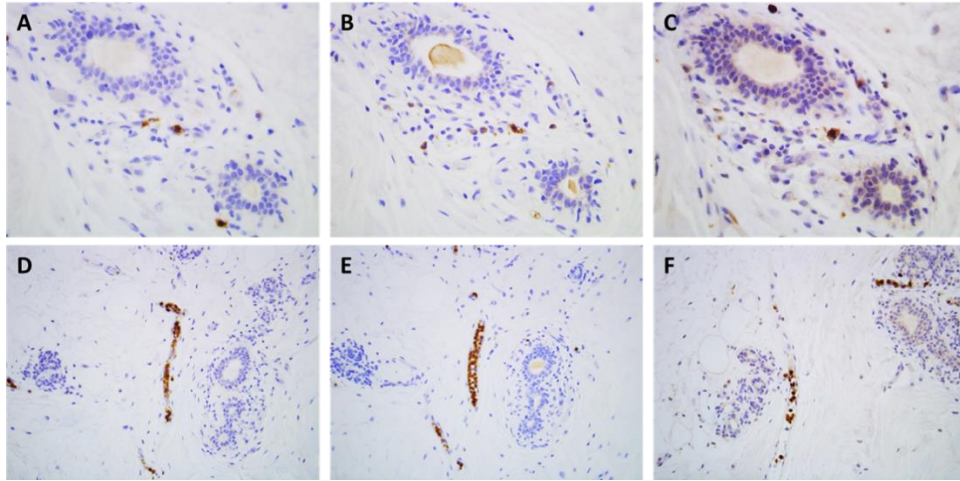
# Prognostic Value of CXCR2 in Breast Cancer

Florence Boissière-Michot, William Jacot, Julien Fraisse, Sophie Gourgou, Colin Timaxian and Gwendal Lazennec

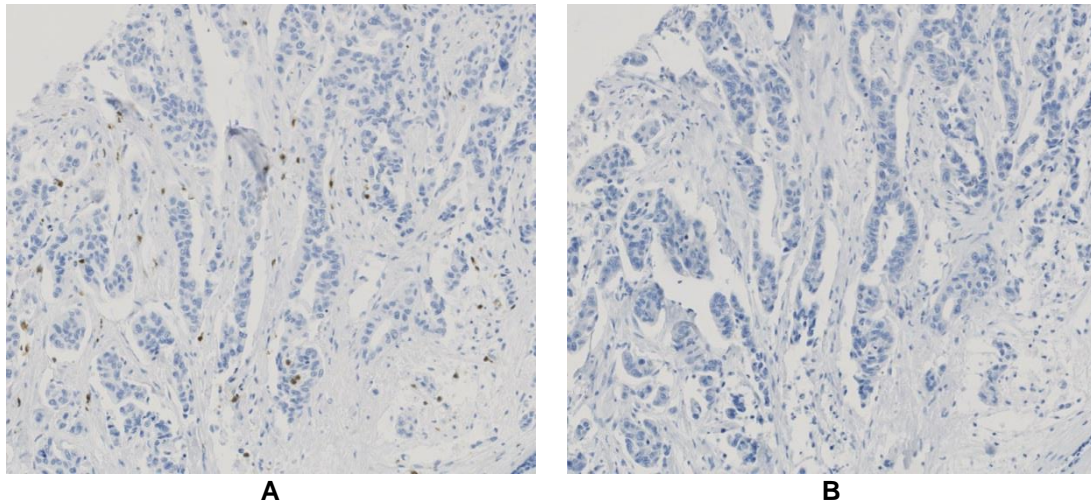
## Supplementary Materials

**Table S1.** Immuno-histochemical reagents and protocols.

Target	Type	Clone	Source Reference	Antigen Retrieval	Dilution	Staining Protocol	IHC Validation
CXCR2	Rabbit polyclonal	-	LSBio LS-A804	-	-	-	No
CXCR2	Mouse monoclonal	5E8-C7-F10	Affimetrix #12-1829	-	-	-	No
CXCR2	Mouse monoclonal	48-311	R&D systems MAB331	-	-	-	No
CXCR2	Mouse monoclonal	6D499	Acris AM08392	-	-	-	No
CXCR2	Mouse monoclonal	19	InVitrogen AHR1532	pH 9	1/500	Linker mouse Envision™ Flex+	Yes
CXCR2	Mouse monoclonal	E-2	Santa Cruz Sc-7304	pH 9	1/500	Linker mouse Envision™ Flex+	Yes
CXCR2	Rabbit polyclonal	-	Atlas Ab HPA03199	pH 6.1	1/100	Linker rabbit Envision™ Flex+	Yes
CD11b	Rabbit monoclonal	EP45	BioSB BSB 6440	pH 9	1/400	Linker rabbit Envision™ Flex+	Yes
CD66b	Mouse monoclonal	80H3	Bio-Rad MCA216	pH 6.1	1/200	Envision™ Flex	Yes



**Figure S1.** Representative examples of CXCR2 staining in formalin-fixed paraffin-embedded samples. Immunostaining of CXCR2 in serial sections of human breast samples using 3 Ab (**A** and **D**: clone E-2; **B** and **E**: rabbit polyclonal Ab HPA03199; **C** and **F**: clone 19). Note a consistent pattern between the 3 Ab with staining of scattered cells within the stroma (**A,B,C**) and inside blood vessels (**D,E,F**), and absence of staining of epithelial cells. Immuno-peroxidase 400× (**A,B,C**), 200× (**D,E,F**).



**Figure S2.** Validation of the CXCR2 immuno-staining in invasive breast carcinoma. (**A**) One section was labelled with the E-2 mouse monoclonal IgG1 anti-CXCR2 Ab at 0.4 µg/mL. (**B**) Serial section was processed as the section shown in A, but with irrelevant IgG1 used at the same concentration. Immuno-peroxidase 200×.

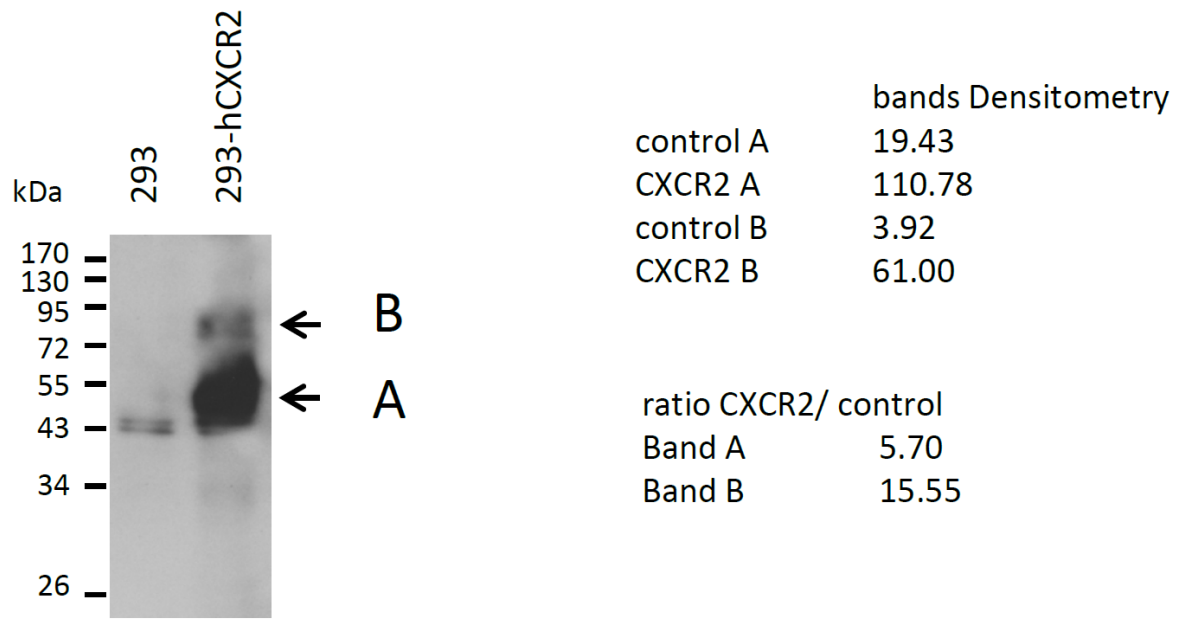


Figure S3. Whole Western Blot for figure 2A.