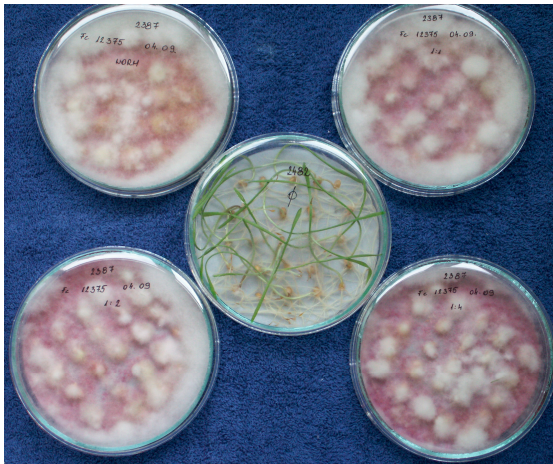


Supplementary materials:

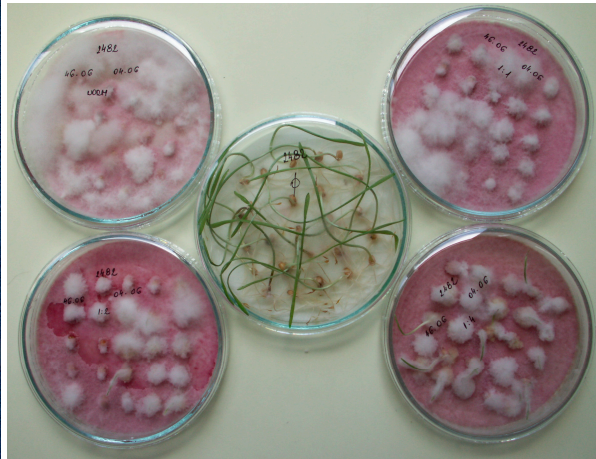
Table S1. Aggressiveness tests for the isolates used in 2013 on two genotypes differing in seedling resistance. 25 seeds were tested in a Petri dish in 5 × 5 binding. The number of healthy germs were counted daily from the 2nd to 6th day. Normal (without dilution) concentration and 1:1, 1:2, and 1:4 dilutions were used.

Isolate	Variety 1 S	Days after Sowing / No. of Healthy Germs					Mean	% to Check
		2	3	4	5	6		
Fc 12375/ 2013	No dilution	0	0	0	0	0	0	0.00
	1:1	0	0	0	0	0	0	0.00
	1:2	0	0	0	0	0	0	0.00
	1:4	0	0	0	0	0	0	0.00
	Check	23	24	24	24	24	23.8	100.00
	Mean % for dilutions						0	0.00
	Variety 2 MS	Days after sowing / No. of healthy germs					Mean	% to check
		2	3	4	5	6		
	No dilution	0	0	0	0	0	0	0.00
	1:1	0	0	0	0	0	0	0.00
	1:2	0	0	0	0	0	0	0.00
	1:4	0	0	0	0	0	0	0.00
	Check	22	23	24	24	24	23.4	100.00
	Mean % for dilutions							0.00
	Variety 1 S	Days after sowing / No. of healthy germs					Mean	% to check
		2	3	4	5	6		
Fc 52.10 2013	No dilution	0	0	0	0	0	0	0.00
	1:1	0	0	0	0	0	0	0.00
	1:2	0	0	0	0	0	0	0.00
	1:4	7	8	8	8	8	7.8	32.77
	Check	23	24	24	24	24	23.8	100.00
	Mean % for dilutions							8.19
	Variety 2 MS	Days after sowing / No. of healthy germs					Mean	% to check
		2	3	4	5	6		
	No dilution	0	0	0	0	0	0	0.00
	1:1	0	0	0	0	0	0	0.00
	1:2	1	2	3	3	3	2.4	10.26
	1:4	9	9	8	8	8	8.4	35.90
	Check	22	23	24	24	24	23.4	100.00
	Mean % for dilutions							11.54
	Variety 1 S	Days after sowing / No. of healthy germs					Mean	% to check
		2	3	4	5	6		
Fg 19.42 2013	No dilution	2	0	0	0	0	0.4	1.68
	1:1	2	2	1	1	1	1.4	5.88
	1:2	11	7	2	2	2	4.8	20.17
	1:4	14	9	4	4	4	7	29.41
	Check	23	24	24	24	24	23.8	100.00
	Mean % for dilutions							14.29
	Variety 2 MS	Days after sowing / No. Of healthy germs					Mean	% to check
		2	3	4	5	6		
	No dilution	1	0	0	0	0	0.2	0.85
	1:1	4	1	1	1	1	1.6	6.84
	1:2	6	5	3	3	3	4	17.09
	1:4	12	9	6	6	6	7.8	33.33
	Check	22	23	24	24	24	23.4	100.00

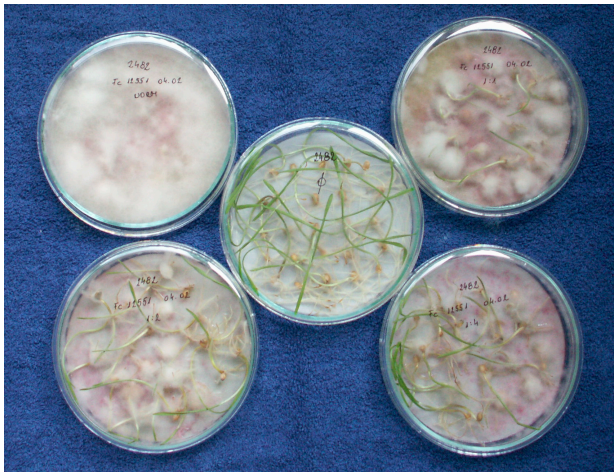
Variety 1		Days after sowing / No. of healthy germs					Mean	% to
S		2	3	4	5	6	check	
Fg 13.38 2013	No dilution	0	0	0	0	0	0	0.00
	1:1	3	1	0	0	0	0.8	3.36
	1:2	6	5	3	3	3	4	16.81
	1:4	14	9	8	8	8	9.4	39.50
	Check	23	24	24	24	24	23.8	100.00
Mean % for dilutions								14.92
Variety 2 MS		Days after sowing / No. of healthy germs					Mean	% to
S		2	3	4	5	6	check	
	No dilution	2	1	1	1	1	1.2	5.13
	1:1	3	3	3	2	2	2.6	11.11
	1:2	11	8	6	5	4	6.8	29.06
	1:4	8	6	6	6	3	5.8	24.79
	Check	22	23	24	24	24	23.4	100.00
Mean % for dilutions								17.52
Variety 1		Days after sowing / No. of healthy germs					Mean	% to
S		2	3	4	5	6	check	
Fg 46.06 2013	No dilution	12	8	8	8	8	8.8	36.97
	1:1	20	18	18	18	18	18.4	77.31
	1:2	21	21	21	21	21	21	88.24
	1:4	19	19	19	19	19	19	79.83
	Check	23	24	24	24	24	23.8	100.00
Mean % for dilutions								70.59
Variety 2 MS		Days after sowing / No. of healthy germs					Mean	% to
S		2	3	4	5	6	check	
	No dilution	15	14	13	13	13	13.6	58.12
	1:1	14	13	13	13	13	13.2	56.41
	1:2	21	18	18	18	18	18.6	79.49
	1:4	23	21	21	21	21	21.4	91.45
	Check	22	23	24	24	24	23.4	100.00
Mean % for dilutions								71.37



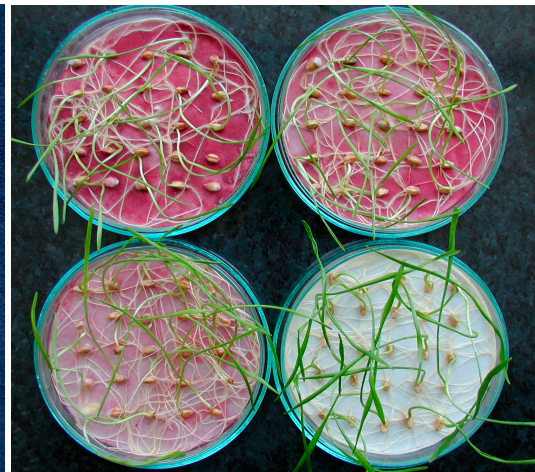
Fc 12375



Fg 46.06



Fc 12551



F. avenaceum 17

Figure S1. Petri dish aggressiveness test at different aggressiveness. The pictures are from another year, and demonstrate the aggressiveness differences that are shown by the data in Table S1. Left upper corner: original concentration, right upper: dilution 1:1, lower left: dilution 1:2, low right: dilution 1:4, in the middle non-inoculated check. For *F. avenaceum*, the 1:8 dilution was absent.