

Supplementary file

Table S1. List of antibodies.

S.No.	Antibodies	Catalog No.
1.	Anti-GFAP	Dako Z0334
2.	Anti-CRALBP	ab15051, Abcam
3.	Anti-Aldh1L1	ab190298, Abcam
4.	Anti-F4/80	ab16911, Abcam
5.	Anti-CD11b	ab133357, Abcam
5.	Anti-OXR1	HPA027395 Sigma
6.	Anti-Iba1	ab178680, Abcam
7.	Alexa Fluor® 488 Goat Anti-Rabbit IgG	11008-Invitrogen
8.	Alexa Fluor® 488 Goat Anti-Mouse IgG	ab150117, Abcam

Table S2. List of qPCR primers

S. No.	Gene	Forward	Reverse
1.	<i>β-actin</i>	CATGTACGTTGCTATCCAGGC	CTCCTTAATGTCACGCACGAT
2.	<i>Hif1-α</i>	CCAGCAGACTCAAATACAAGAACC	TGTATGTGGGTAGGAGATGGAGAT
3.	<i>OXR1</i>	CTGATGGTGATTAAAG ACAGTG	CACTTAAAGACCTCAAATC C
4.	<i>NRF2</i>	AGTGGATCTGCCAACTACTC	CATCTACAAACGGGAATGTCTG
5.	<i>VEGF165</i>	ATCTTCAAGCCATCCTGTGTGC	CAAGGCCACAGGGATTTTC
6.	<i>CD11b</i>	CAGACAGGAAGTAGCAGCTCCT	CTGGTCATGTTGATGAAGGTGCT
7.	<i>MMP9</i>	TTGACAGCGACAAGAAGTGG	GCCATTCACGTCGTCCTTAT
8.	<i>DKK1</i>	GATCATAGCACCTTGGATGGG	GGCACAGTCTGATGACCGG
9.	<i>ERK1</i>	CCTGCGACCTTAAGATTG TGATT	CAGGGAAGATGGGCCGGTTA GAGA
10.	<i>NOTCH1</i>	TTGGGAGGAGCAGATTTTTG	CACTGGCATGACACACAACA

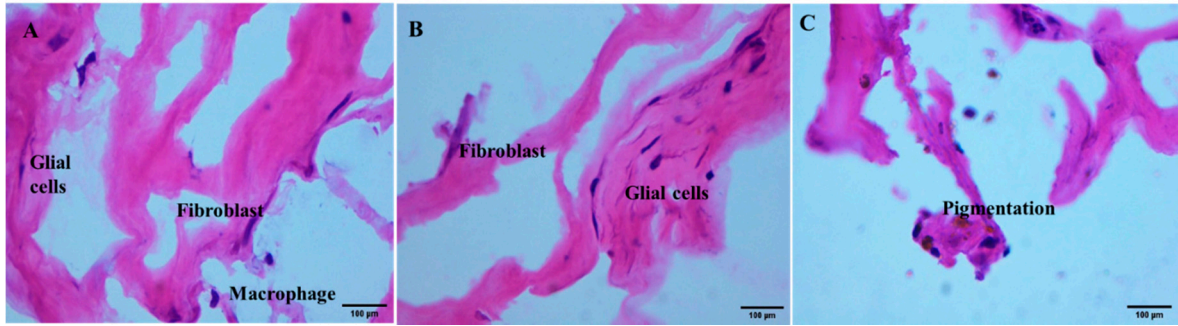


Figure S1. Representative image showing the glial cells with clear spindle shaped structure of the cells and their long thin processes. Macrophages were also seen with round darkly stained structure. Pigmentation was also observed in the membranes.

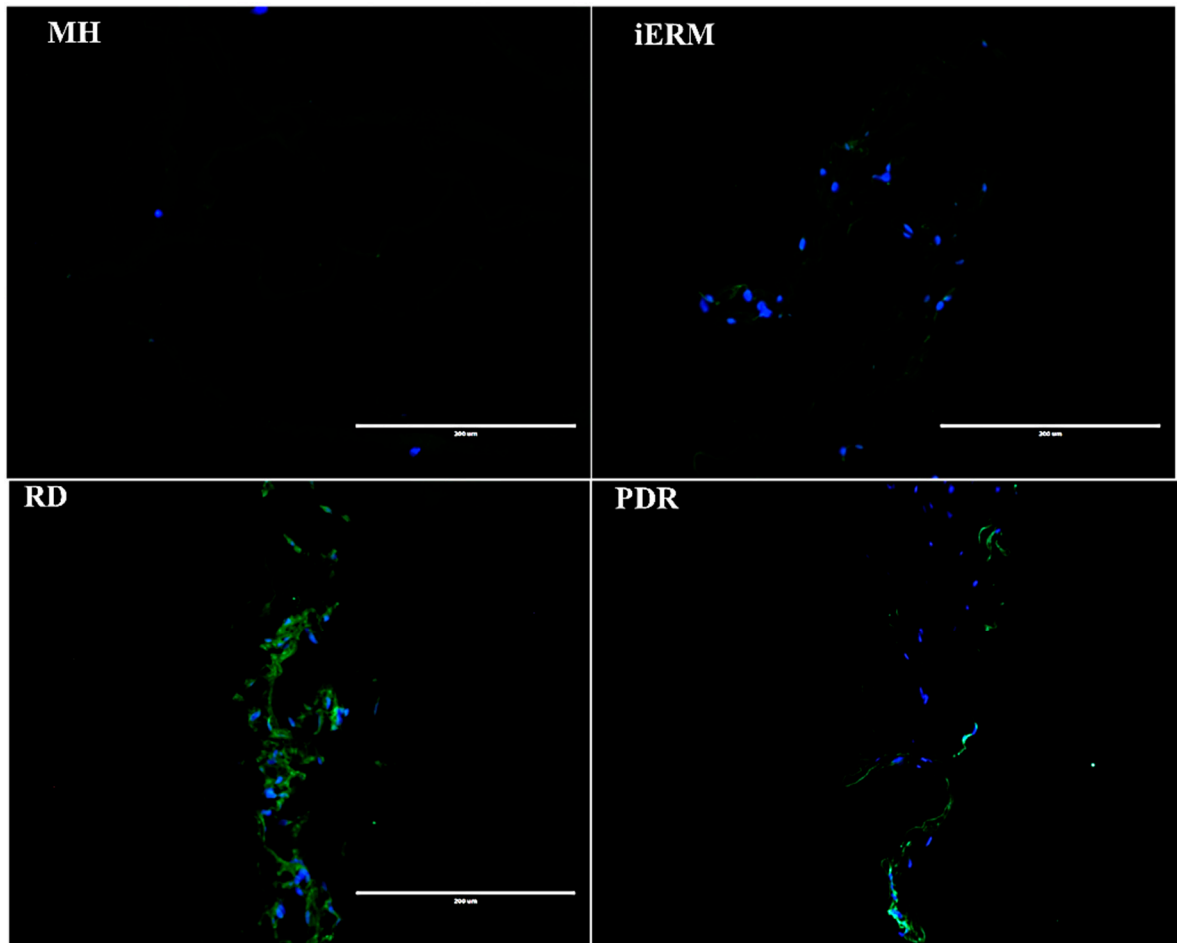


Figure S2. Characterization of Muller glia cells using AldH1L1 (a specific marker for muller glia) in MH, iERM, PDR and RD membranes.