

Supplementary materials

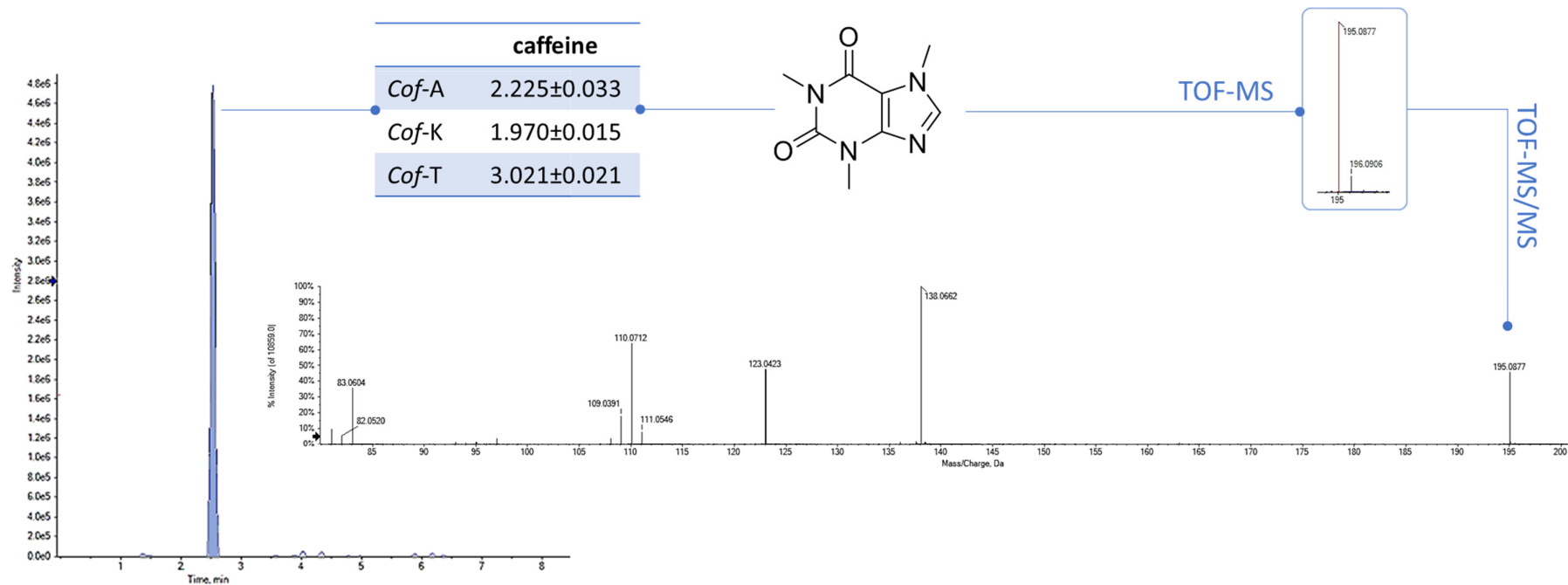


Figure S1. XIC, HR-MS and MS/MS of caffeine. In the table its amount is reported as wt % of dried moka coffee drinks (Cof-A = Coffee enriched with *C. sativa* cv. Antal shredded inflorescences; Cof-K = Coffee enriched with *C. sativa* cv. Kompolti shredded inflorescences; Cof-T = Coffee enriched with *C. sativa* cv. Tiborszallasi shredded inflorescences)

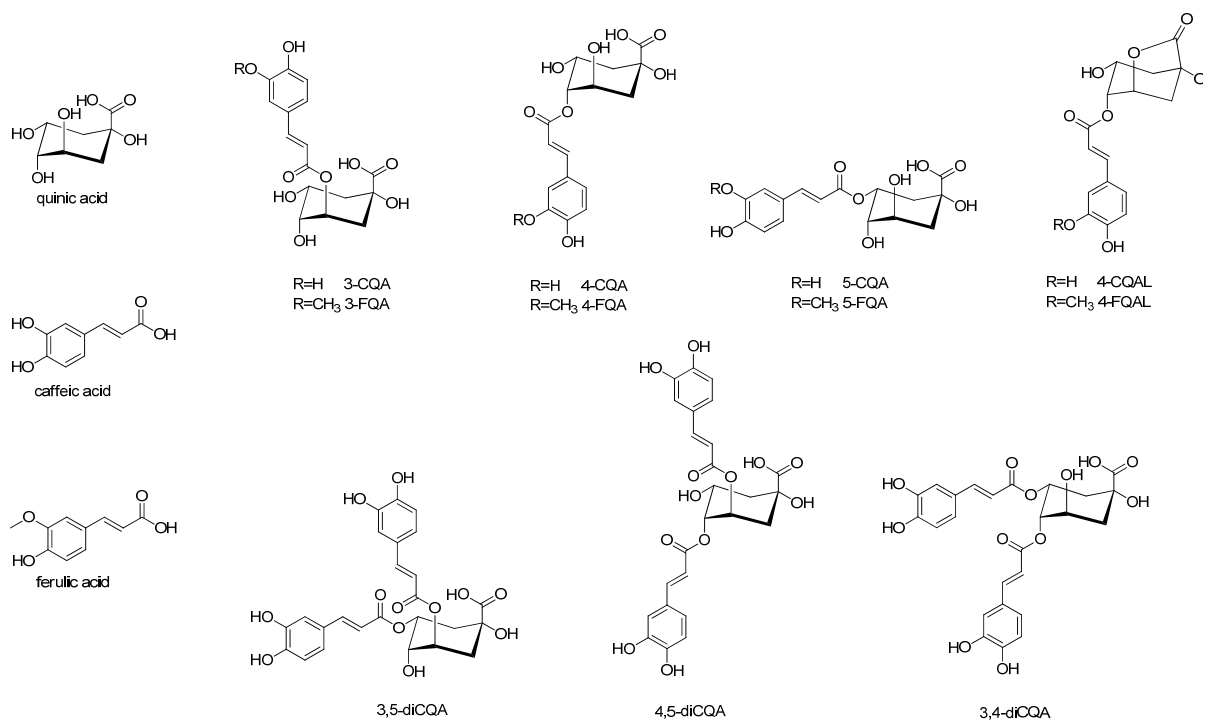


Figure S2. Chemical structures of the main chlorogenic acids (CQA = caffeoylquinic acid; diCQA = dicaffeoylquinic acid; CQAL = caffeoylquinic acid lactone; FQA = feruloylquinic acid; FQAL = feruloylquinic acid lactone).

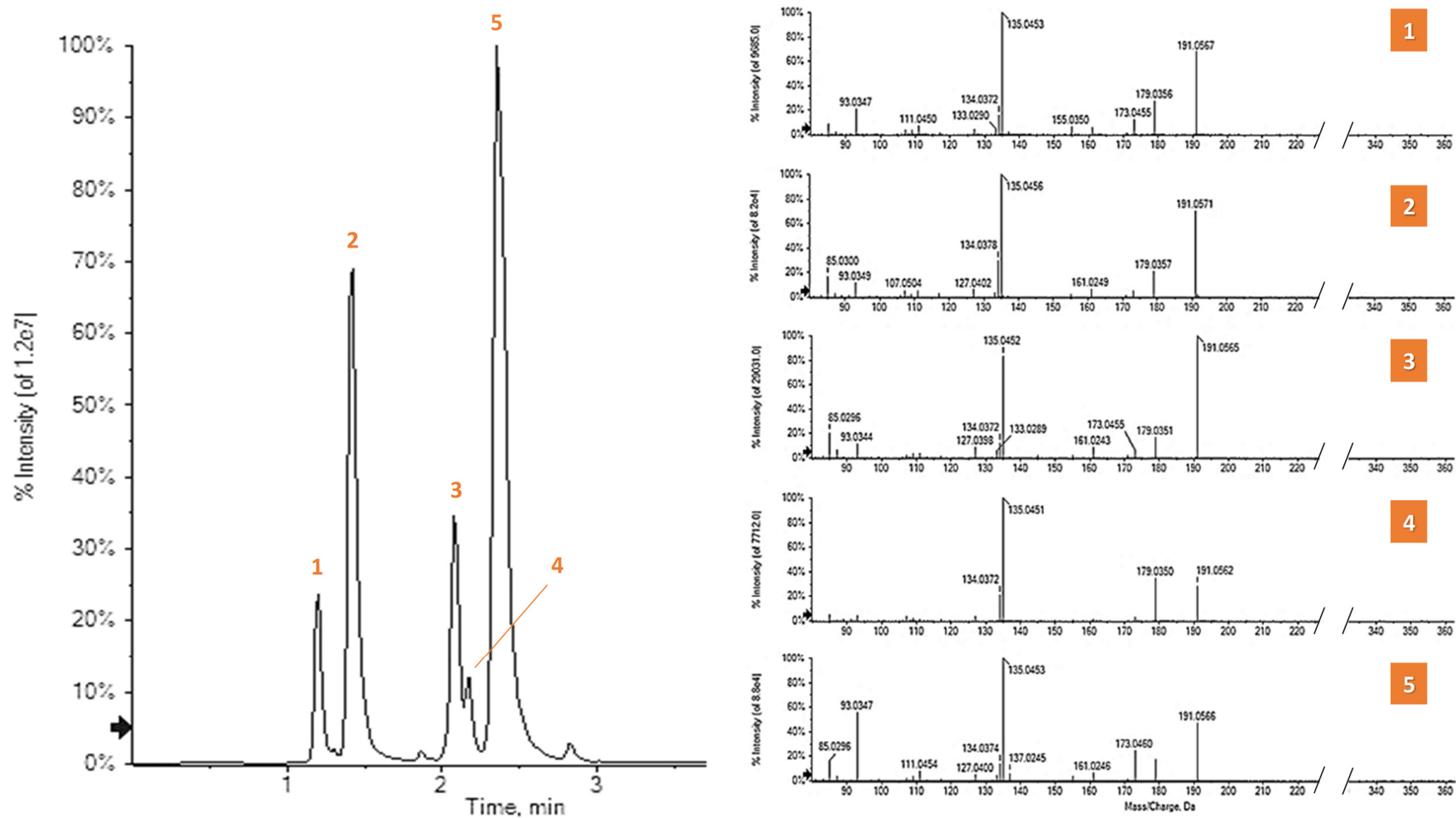


Figure S3. XIC (selecting the ion at m/z 353.09±0.025) and HR-MS/MS of monocaffeoylquinic acids (CQAs) (*Cof-A* = Coffee enriched with *C. sativa* cv. Antal shredded inflorescences; *Cof-K* = Coffee enriched with *C. sativa* cv. Kompolti shredded inflorescences; *Cof-T* = Coffee enriched with *C. sativa* cv. Tiborszallasi shredded inflorescences).

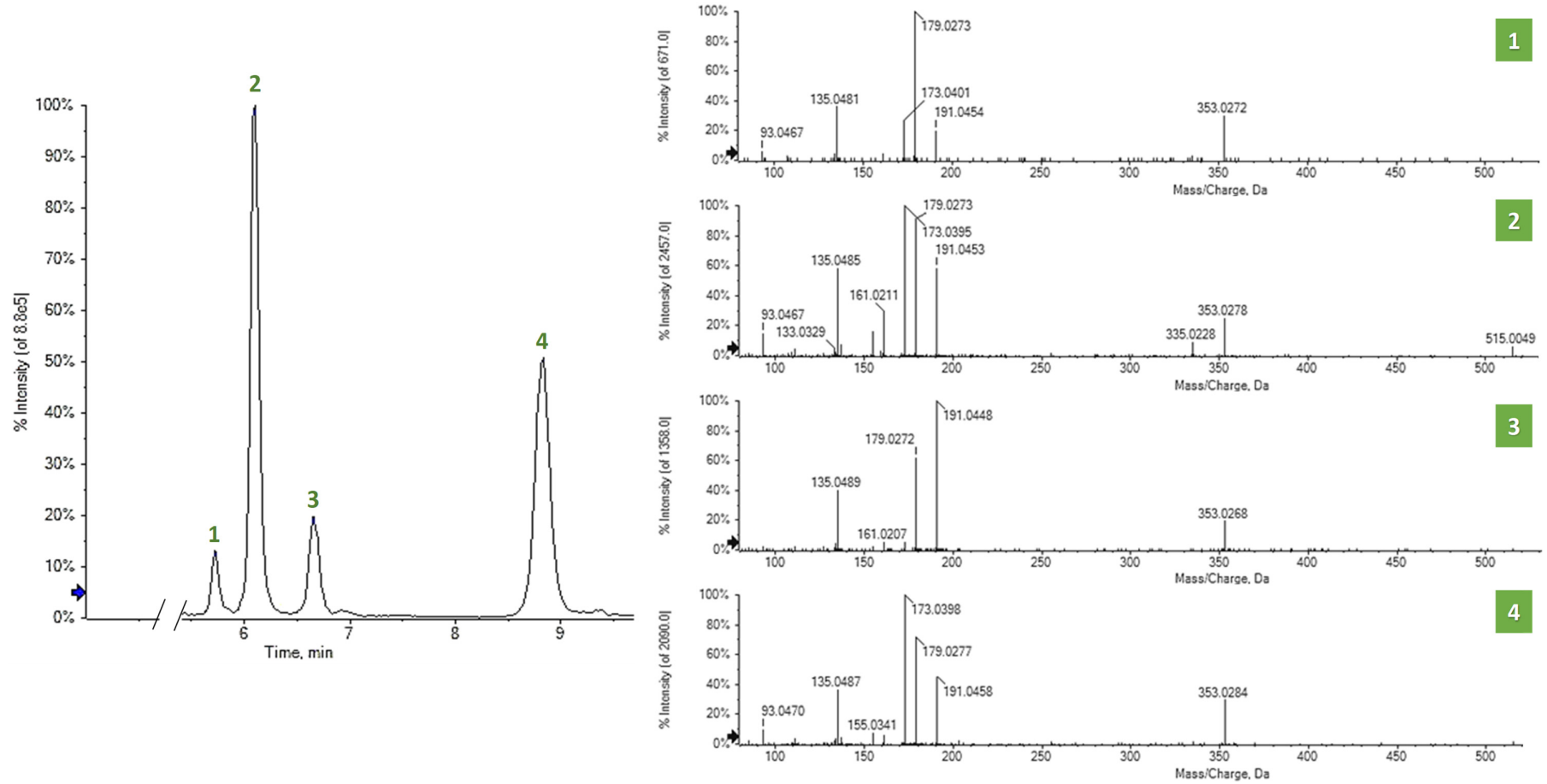


Figure S4. XIC (selecting the ion at m/z 515.10 ± 0.025) and HR-MS/MS of di-caffeoylquinic acids (di-CQAs) (*Cof-A* = Coffee enriched with *C. sativa* cv. Antal shredded inflorescences; *Cof-K* = Coffee enriched with *C. sativa* cv. Kompolti shredded inflorescences; *Cof-T* = Coffee enriched with *C. sativa* cv. Tiborszallasi shredded inflorescences).

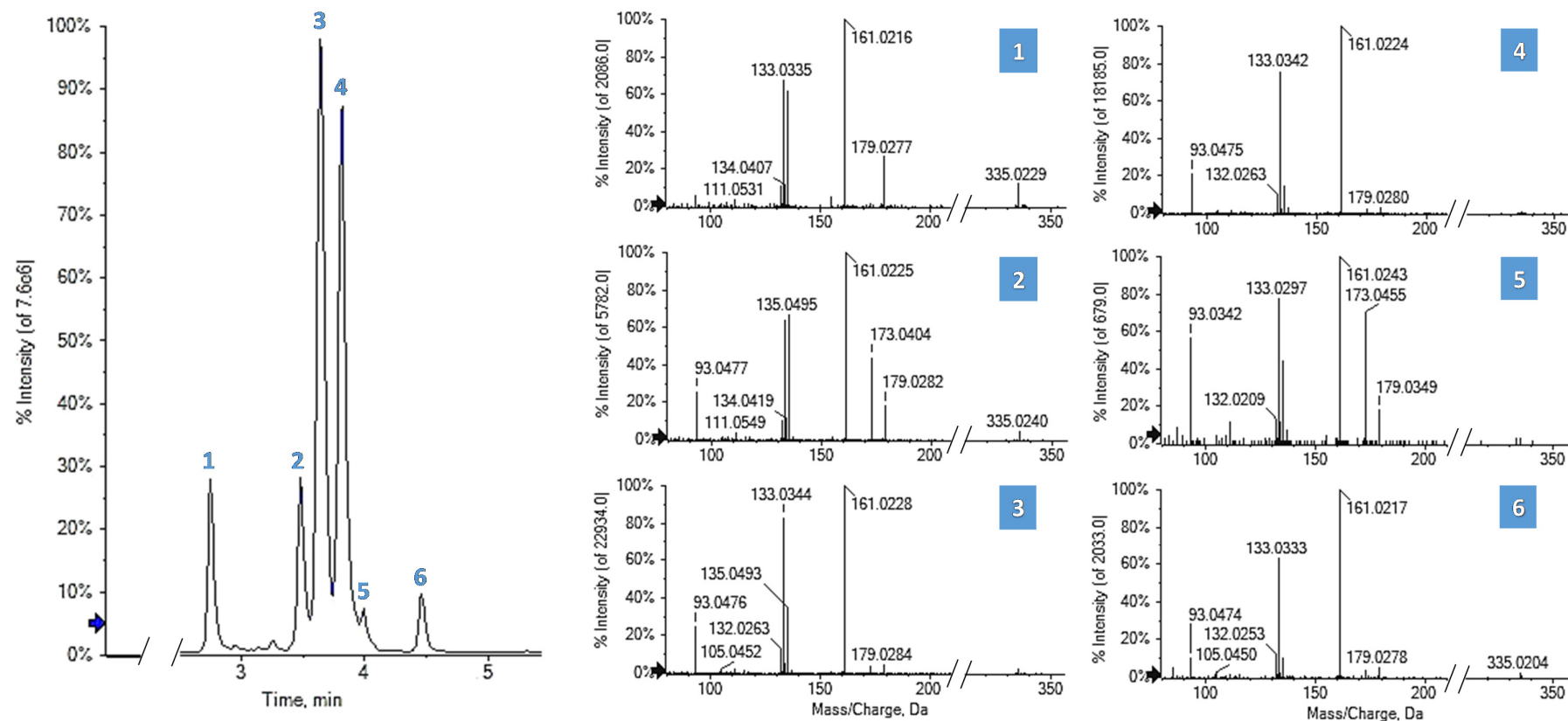


Figure S5. XIC (selecting the ion at m/z 335.08±0.025) and HR-MS/MS of dehydrated derivatives of caffeoylquinic acids (CSAs/CQALs) (*Cof-A* = Coffee enriched with *C. sativa* cv. Antal shredded inflorescences; *Cof-K* = Coffee enriched with *C. sativa* cv. Kompolti shredded inflorescences; *Cof-T* = Coffee enriched with *C. sativa* cv. Tiborszallasi shredded inflorescences).

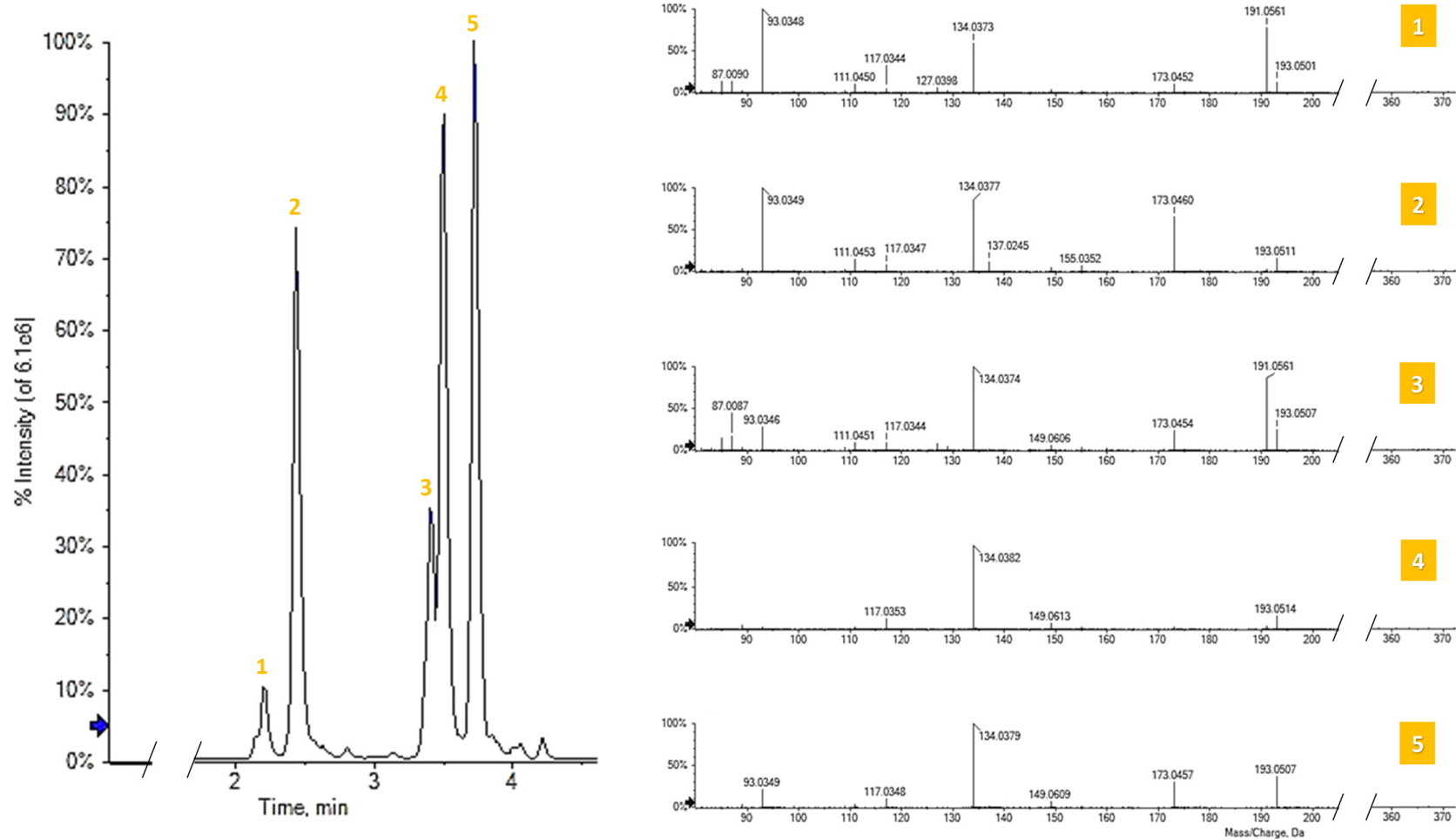


Figure S6. XIC (selecting the ion at m/z 367.08±0.025) and HR-MS/MS of feruloylquinic acids (FQAs) (*Cof-A* = Coffee enriched with *C. sativa* cv. Antal shredded inflorescences; *Cof-K* = Coffee enriched with *C. sativa* cv. Kompolti shredded inflorescences; *Cof-T* = Coffee enriched with *C. sativa* cv. Tiborszallasi shredded inflorescences).