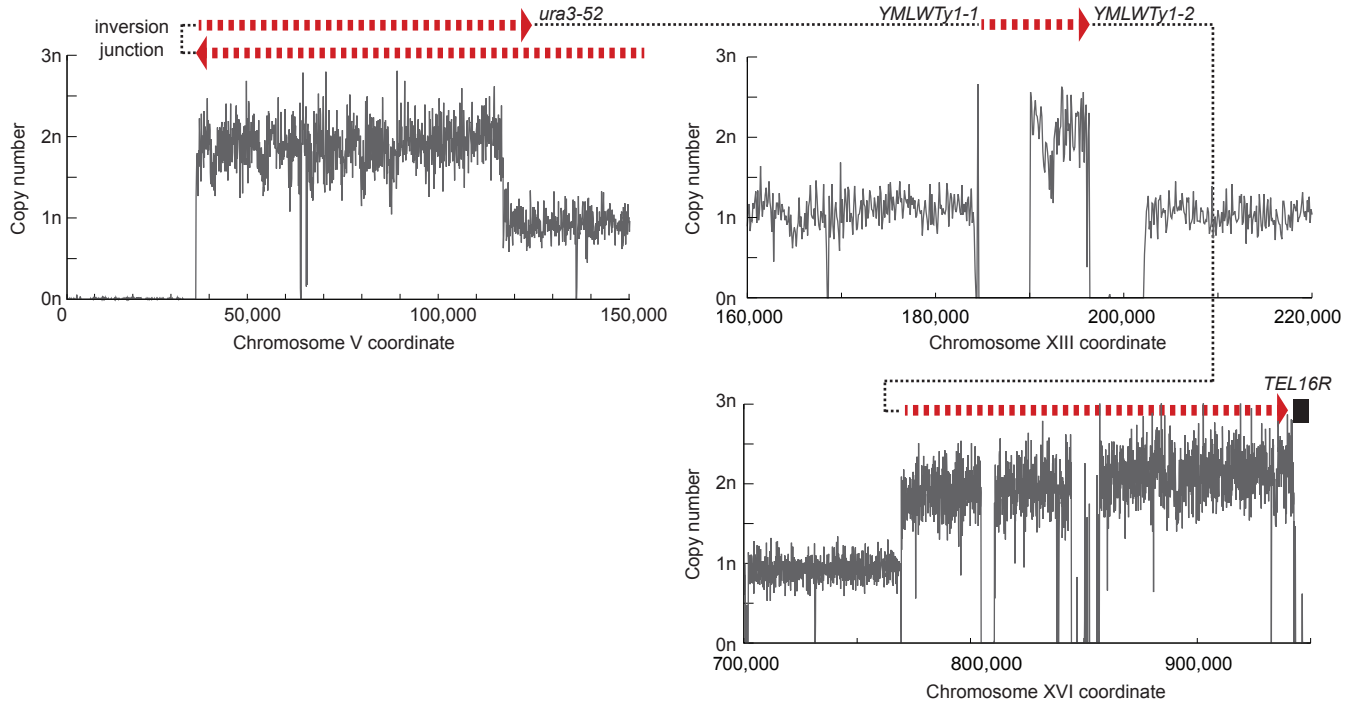


Figure 1 - Source Data 1 (page 1 of 8)

A. PGSP3682 (*sae2Δ tel1Δ*)



B. PGSP4587 (*sae2Δ rad10Δ*)

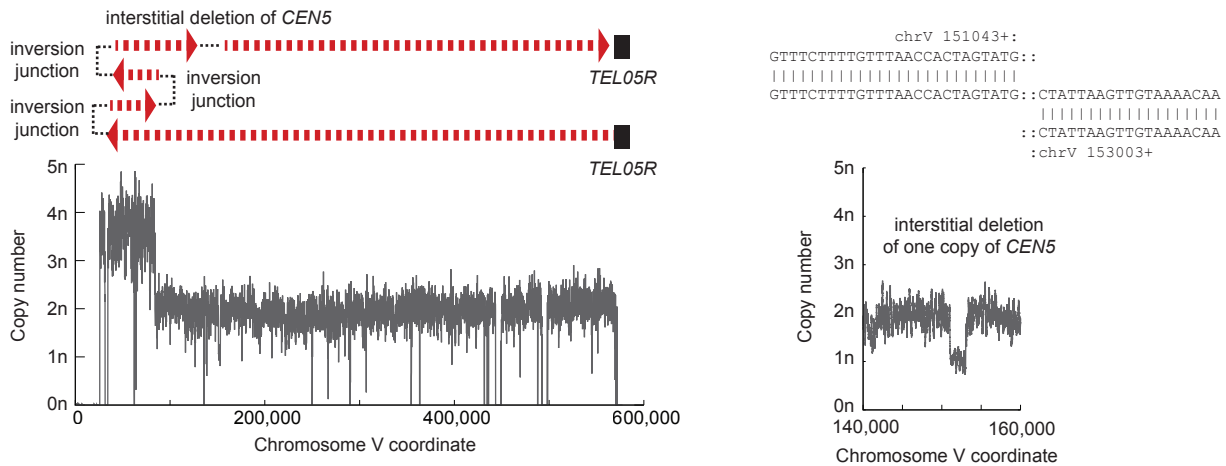
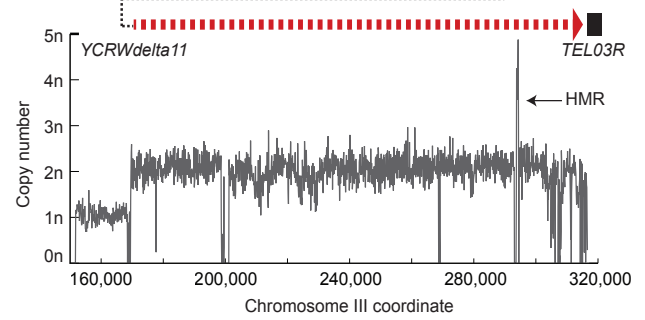
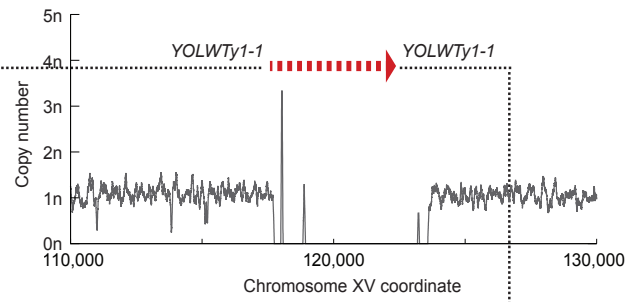
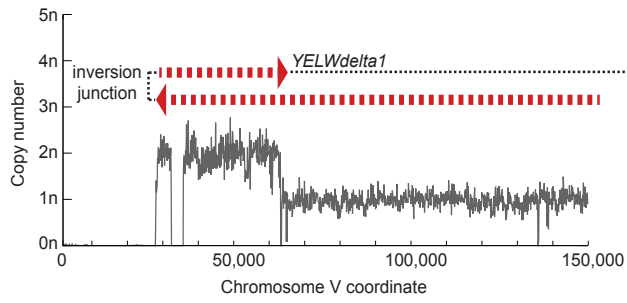


Figure 1 - Source Data 1. Complex GCR structures.

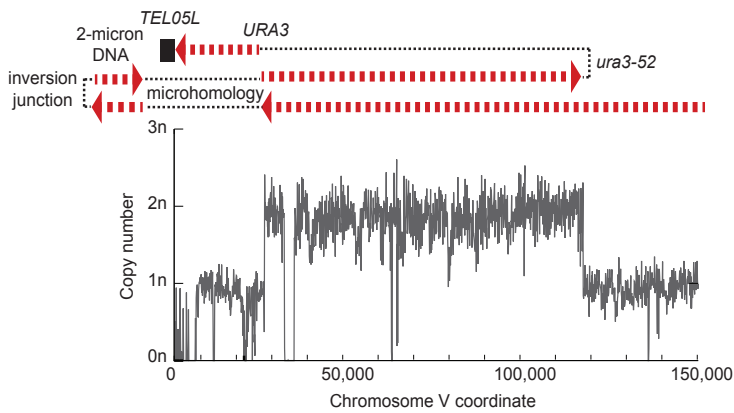
GCR structures that are more complicated than those displayed in Figures 1D and 1E, and Figure 1 - figure supplement 1 are displayed using the same scheme as those displayed in Figure 1 - figure supplement 1. Panels A to U are sorted by the PGSP isolate number. The regions included in the GCR-containing chromosome are displayed using the red dashed arrow (oriented from chrV R to chrV L in the GCR-containing chromosome). The black dotted lines show the connectivity between regions included in the GCR-containing chromosome that are separate in the reference genome. Telomeres added to the chrV L side of the GCR are displayed using black boxes.

Figure 1 - Source Data 1 (page 2 of 8)

C. PGSP4591 (*sae2Δ rad10Δ*)



D. PGSP4598 (*sae2Δ rrm3Δ*)



E. PGSP4601 (*sae2Δ rrm3Δ*)

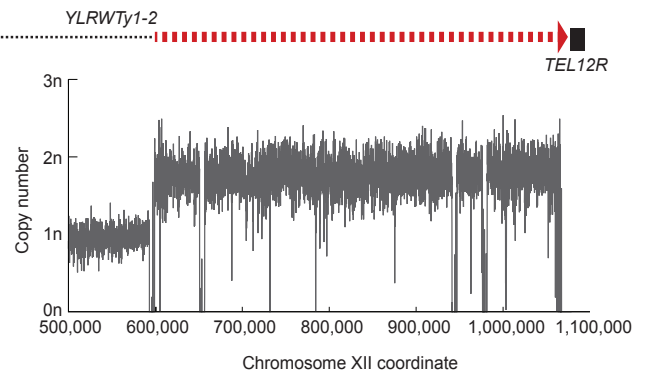
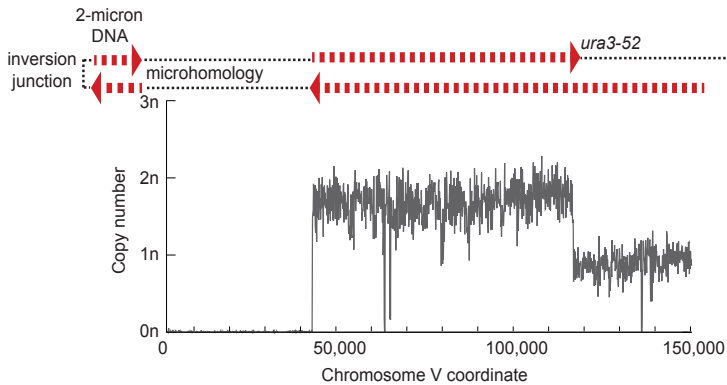
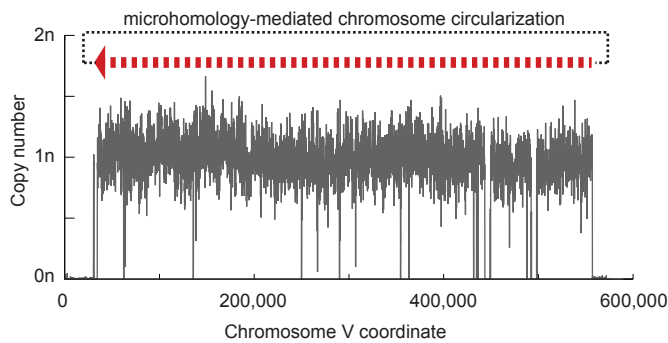


Figure 1 - Source Data 1 (page 3 of 8)

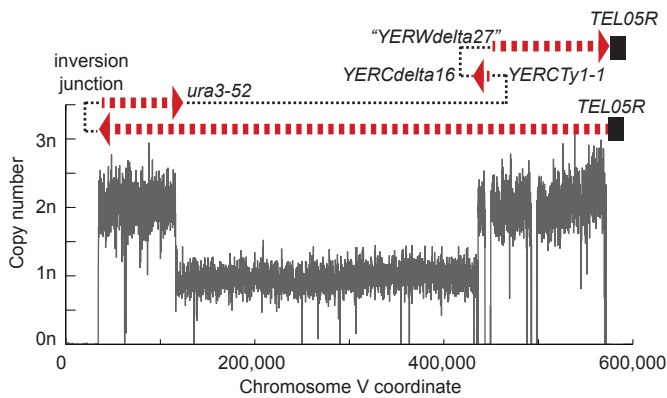
F. PGSP4605 (*sae2Δ rrm3Δ*)



```

chrV 556943+:
CGAACAACGGAAAATATA:GAA:
|||||
CGAACAACGGAAAATATA:GAA:AAGAAAATAAACTAGT
||| |||||
:GAA:AAGAAAATAAACTAGT
:chrV 30395+
    
```

G. PGSP4685 (*sae2Δ yku80Δ*)



H. PGSP4696 (*sgs1Δ yku80Δ*)

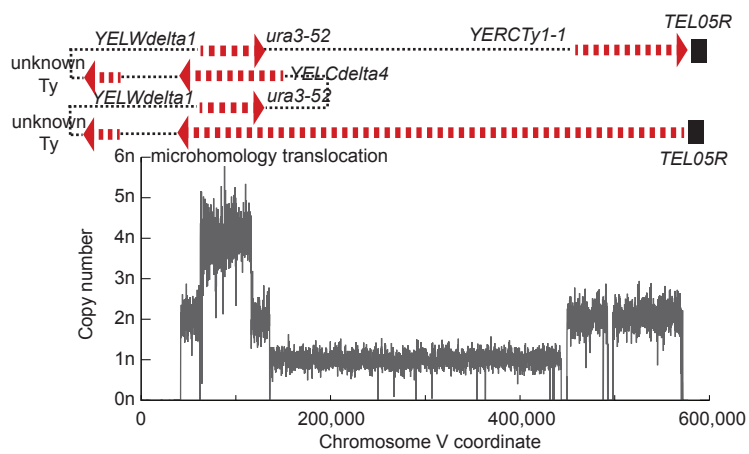
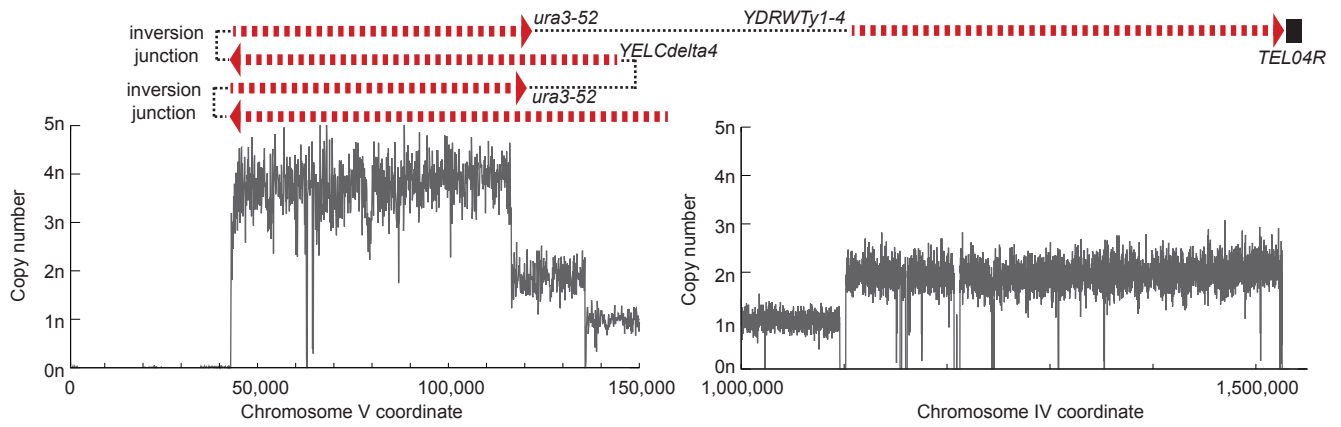
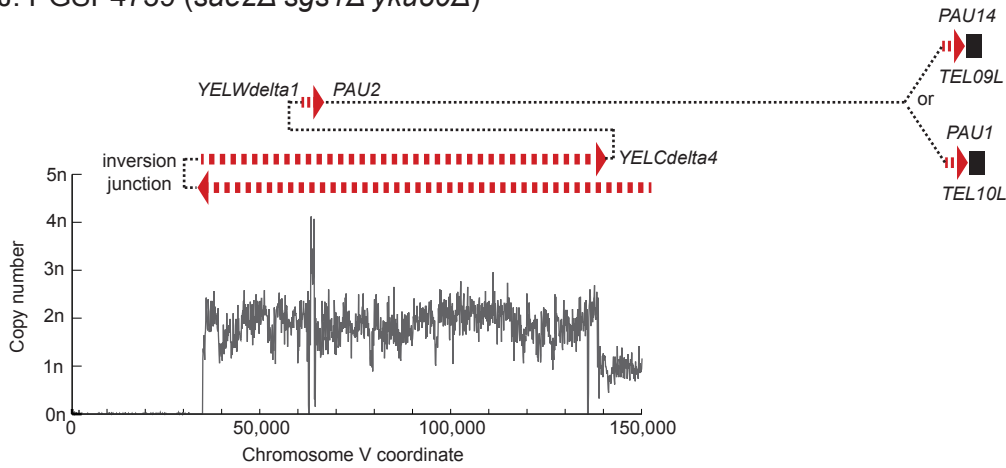


Figure 1 - Source Data 1 (page 4 of 8)

I. PGSP4700 (*sgs1Δ yku80Δ*)



J. PGSP4739 (*sae2Δ sgs1Δ yku80Δ*)



K. PGSP4771 (*sae2-S267A*)

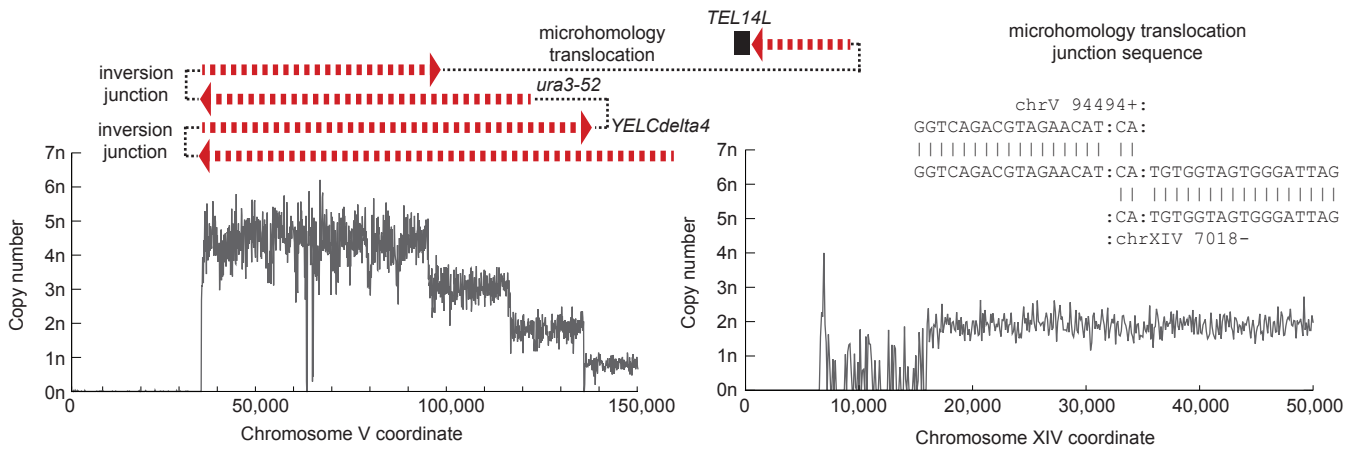
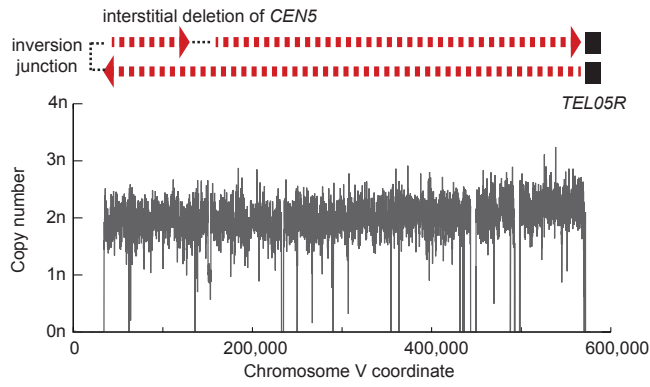
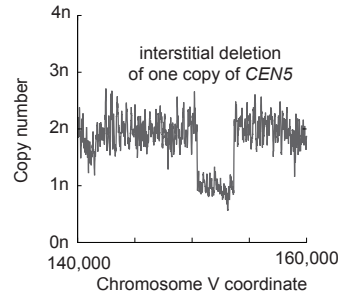


Figure 1 - Source Data 1 (page 5 of 8)

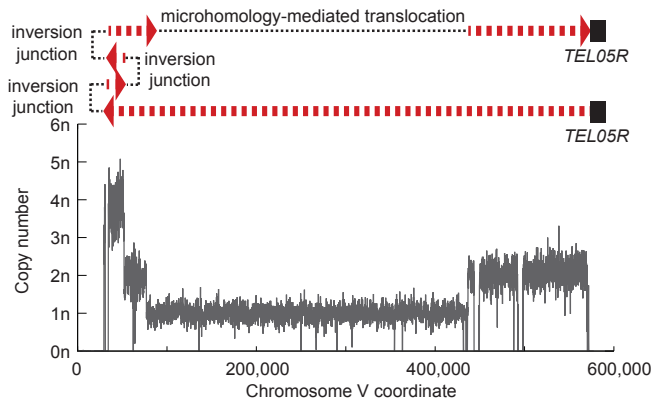
L. PGSP4853 (*sae2Δ yen1Δ*)



```
chrV_153677+:
ACTGATAAAAATTGTGGG:T:
|||||
ACTGATAAAAATTGTGGG:T:GCGCTTATACGATC
|
:T:GCGCTTATACGATC
:chrV_153642+
```



M. PGSP4884 (*sae2Δ rad52Δ*)



```
chrV_76938+:
GCATACTCATTGAGT:GCAGGAGGCTCTTT:
|||||
GCATACTCATTGAGT:GCAGGAGGCTCTTT:TTTGATCTTGAATATC
|
:GCAGGAGATCTTT:TTTGATCTTGAATATC
:chrV_436682+
```

N. PGSP4924 (*sae2Δ sgs1Δ yku80Δ*)

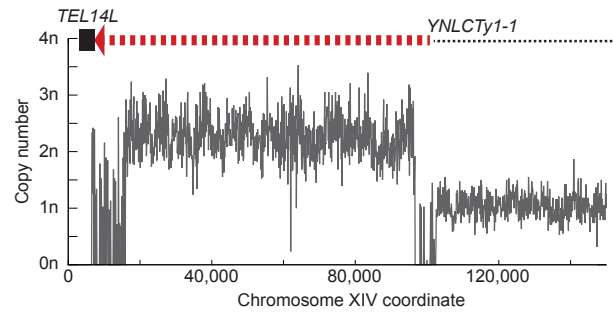
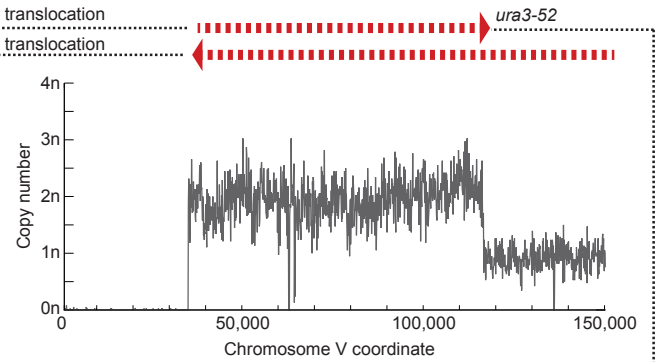
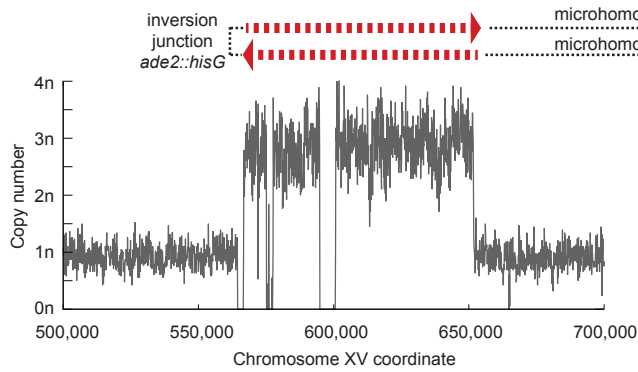
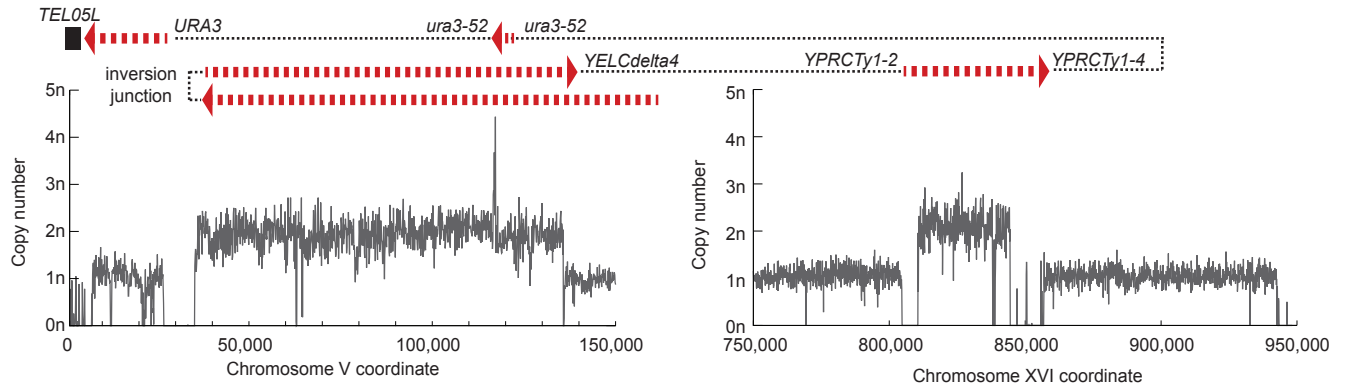
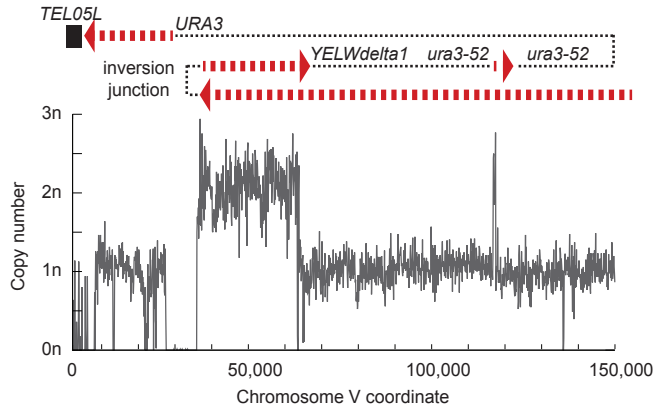


Figure 1 - Source Data 1 (page 6 of 8)

O. PGSP4982 (*sae2Δ chrV:25,817-1,754*)



P. PGSP4984 (*sae2Δ chrV:25,817-1,754*)



Q. PGSP4995 (*sae2Δ chrV:35,709*)

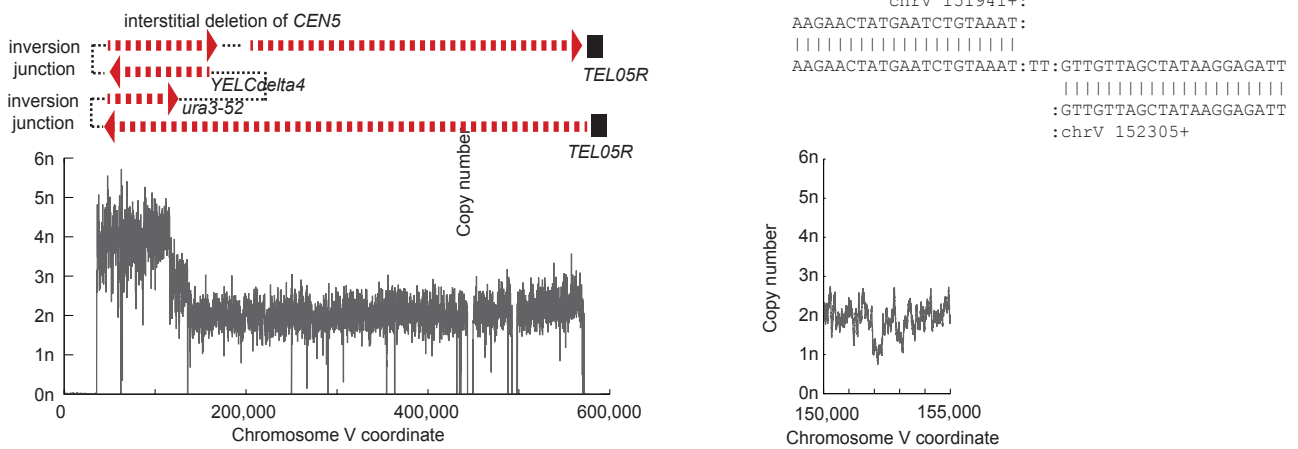
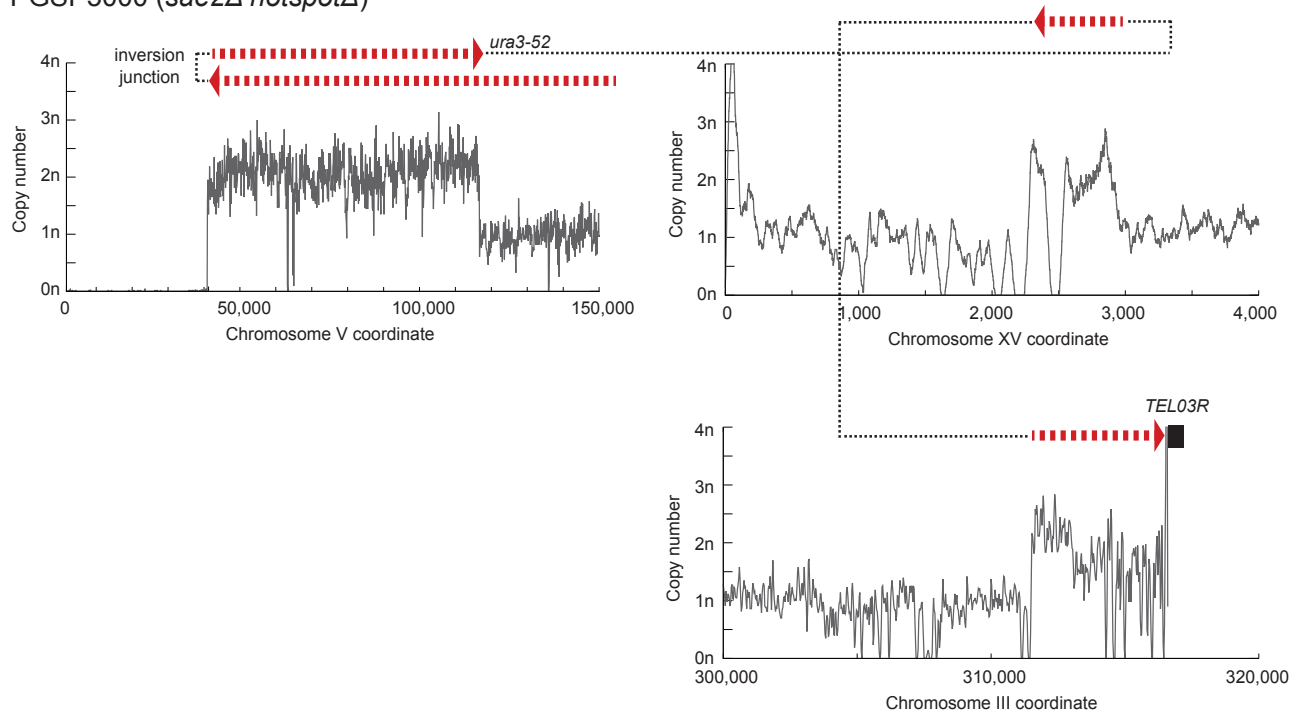
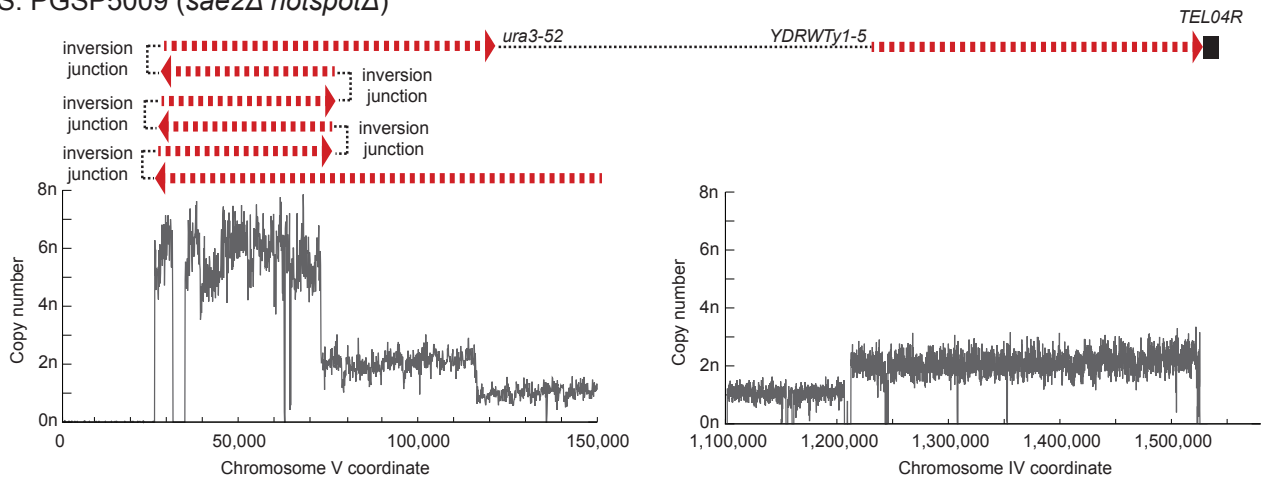


Figure 1 - Sourxe Data 1 (page 7 of 8)

R. PGSP5000 (*sae2Δ hotspotΔ*)



S. PGSP5009 (*sae2Δ hotspotΔ*)



T. PGSP5047 (*sae2Δ exo1Δ yku80Δ*)

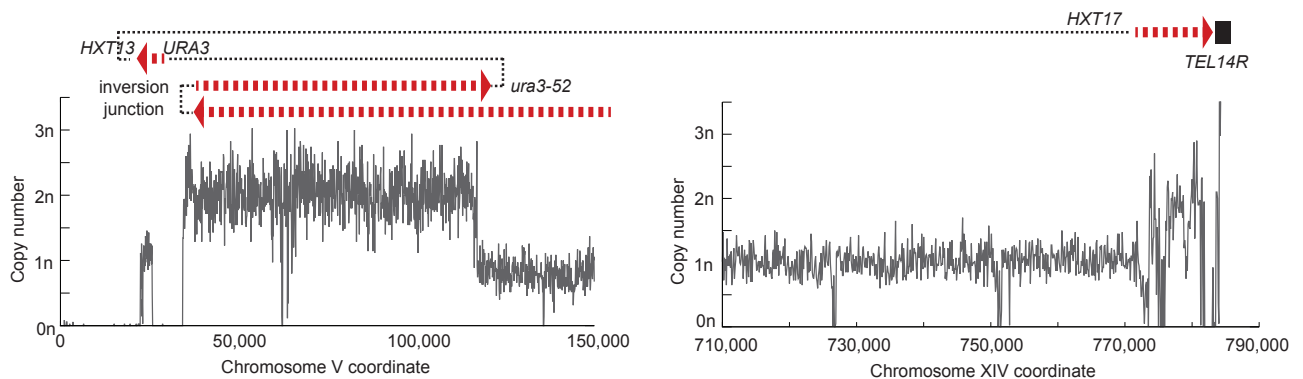


Figure 1 - Source Data 1 (page 8 of 8)

U. PGSP5054 (*sae2Δ* *exo1Δ* *yku80Δ*)

