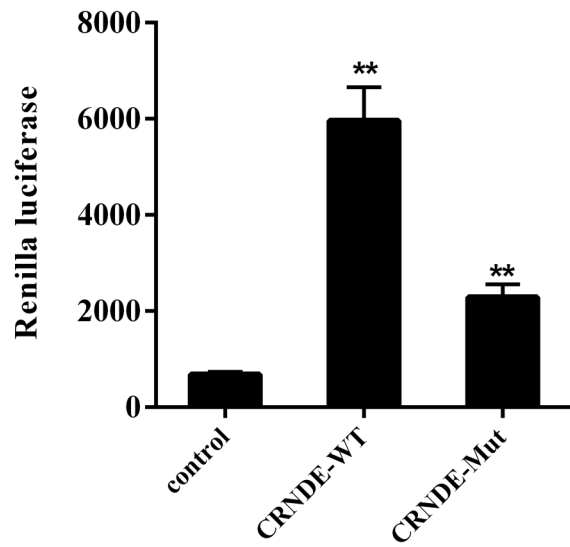
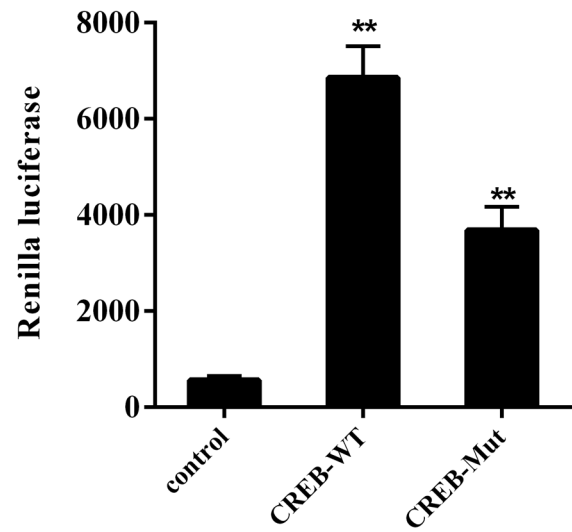


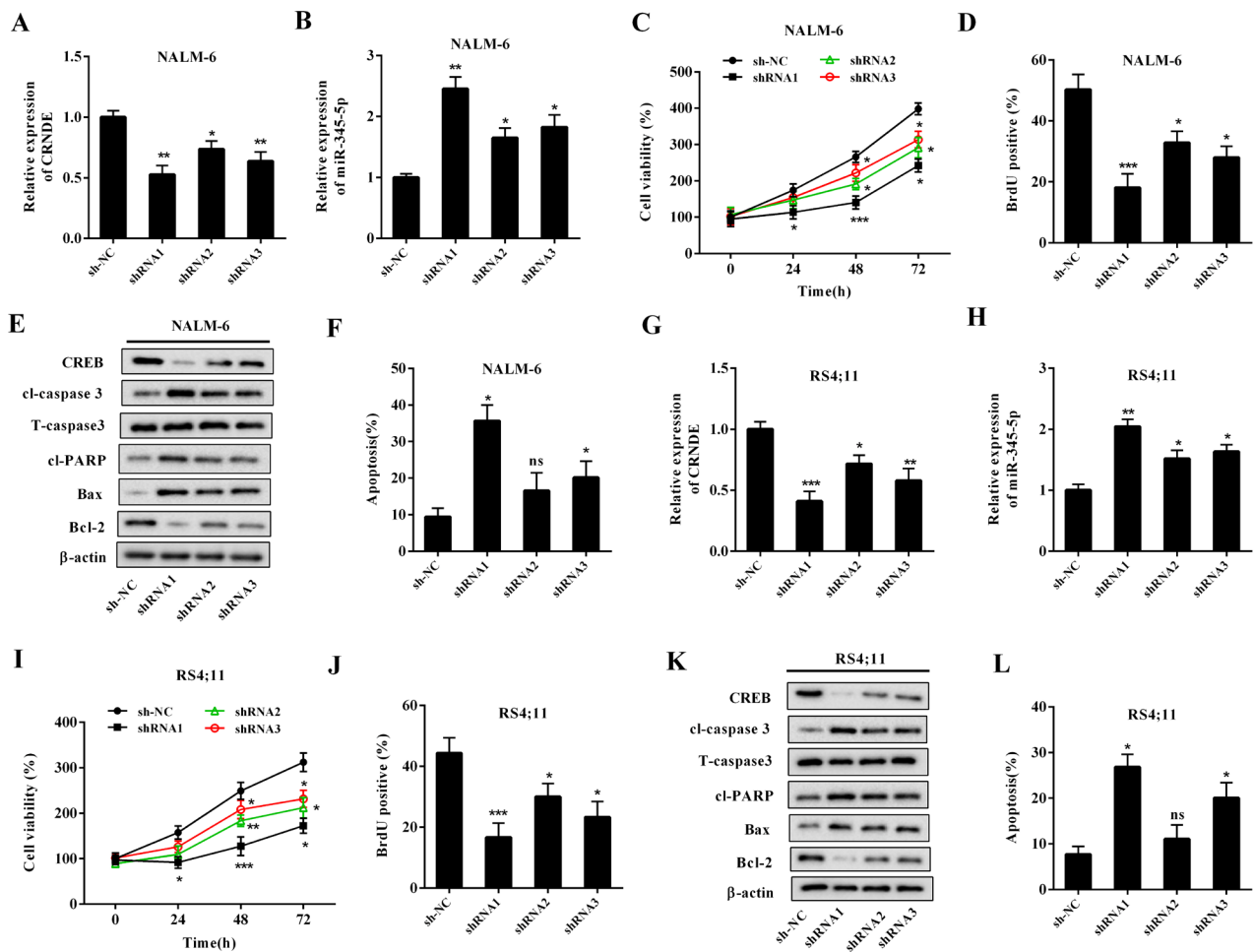
A



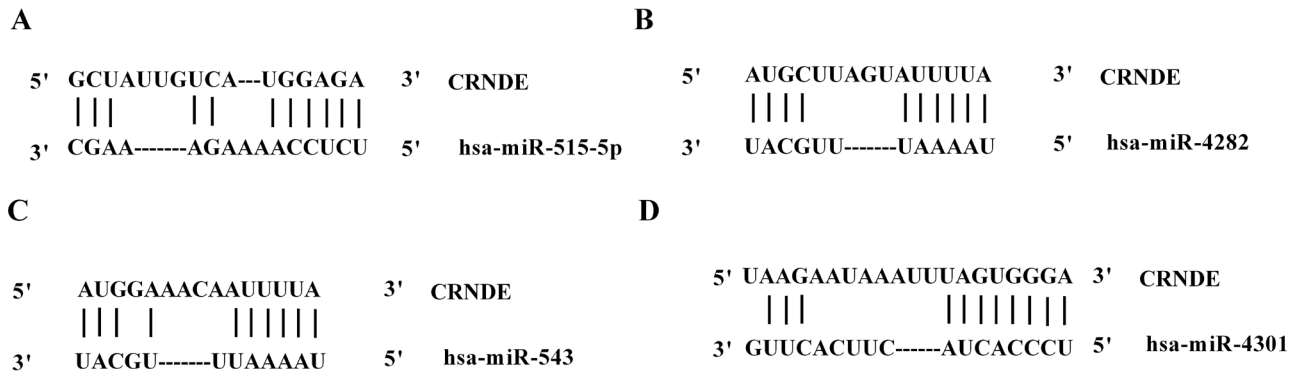
B



Supplementary Fig. S1. The renilla luciferase activities of different plasmids were measured after the co-transfection of plasmids and miR-345-5p mimic. ** $P < 0.01$ vs control.



Supplementary Fig. S2. The BCP-ALL cell lines were transfected with three shRNAs targeting LncRNA *CRNDE* (shRNA1, 2, and 3). (A and G) The expression levels of LncRNA *CRNDE*. (B and H) The expression levels of *miR-345-5p*. (C and I) Cell viability was measured by MTT assay. (D and J) Cell proliferation was measured using the BrdU assay. (E and K) The protein levels of CREB, cl-caspase 3, T-caspase 3, cl-PARP, Bax, and Bcl-2 were measured by Western blot. (F and L) Cell apoptosis was measured using flow cytometry. * $P < 0.05$, ** $P < 0.01$, *** $P < 0.001$ vs sh-NC. ns, not significant.



Supplementary Fig. S3. The specific binding sites between LncRNA *CRNDE* and *miR-515-5p* (A)/*miR-4282* (B)/*miR-543* (C)/*miR-4301* (D).